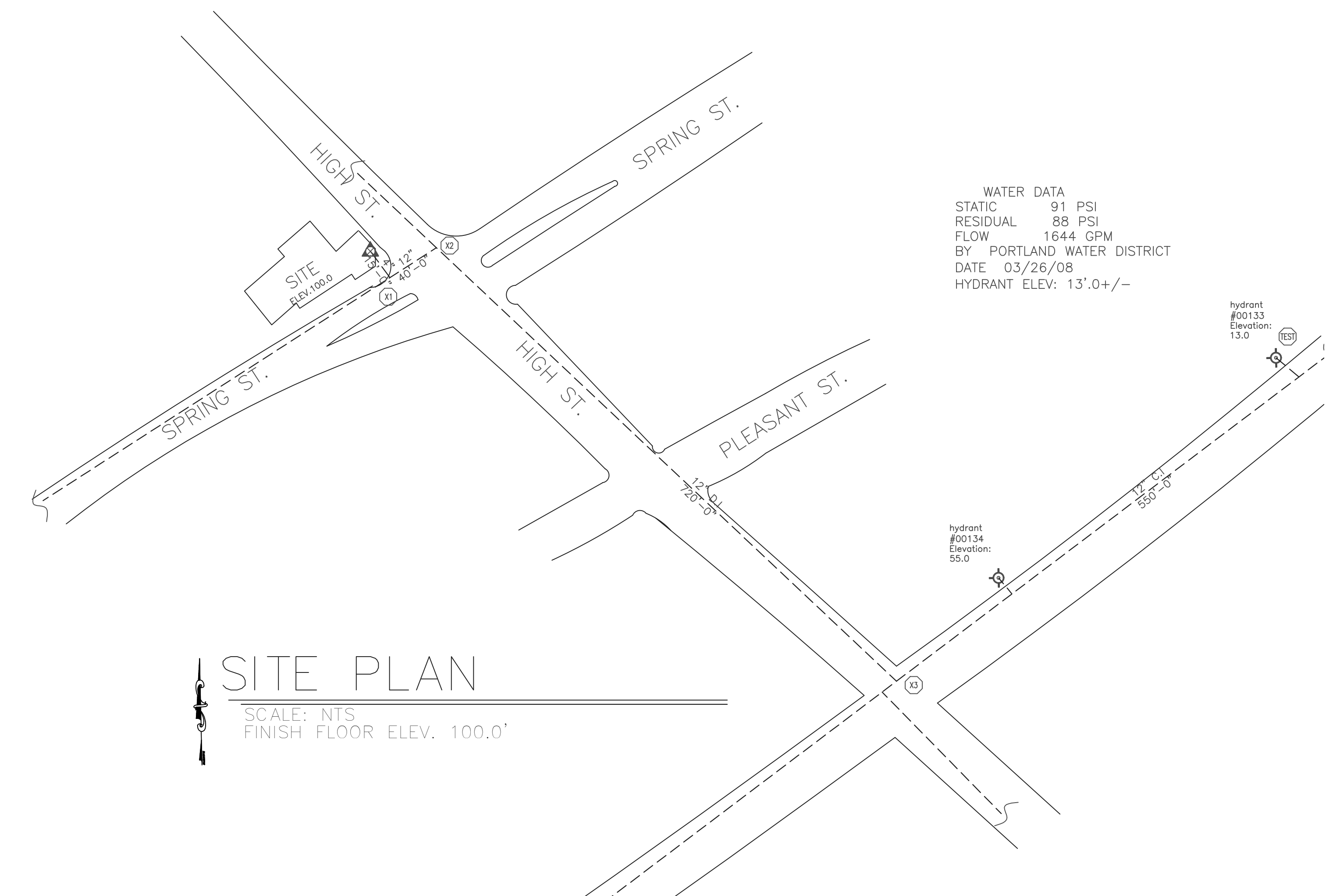
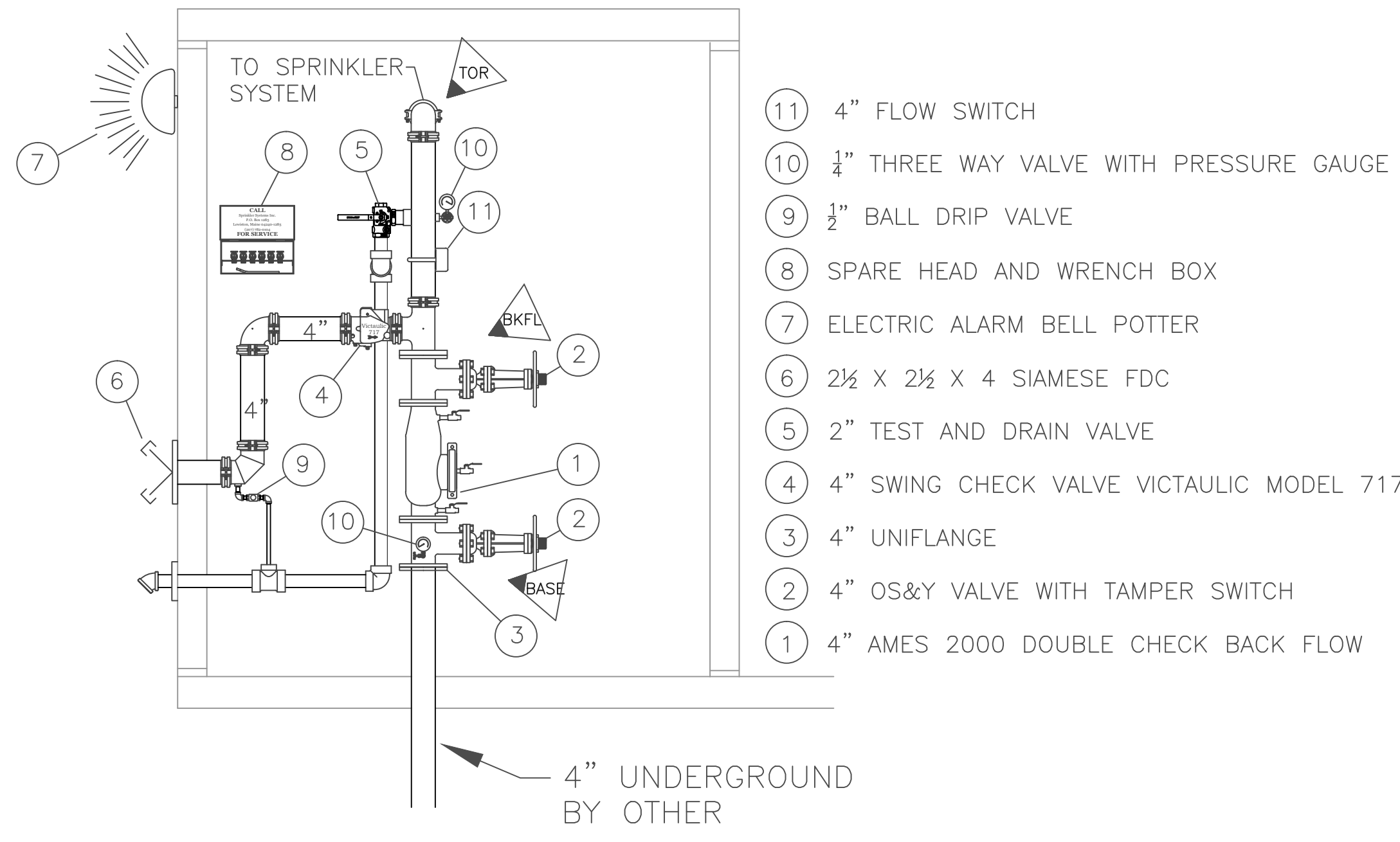


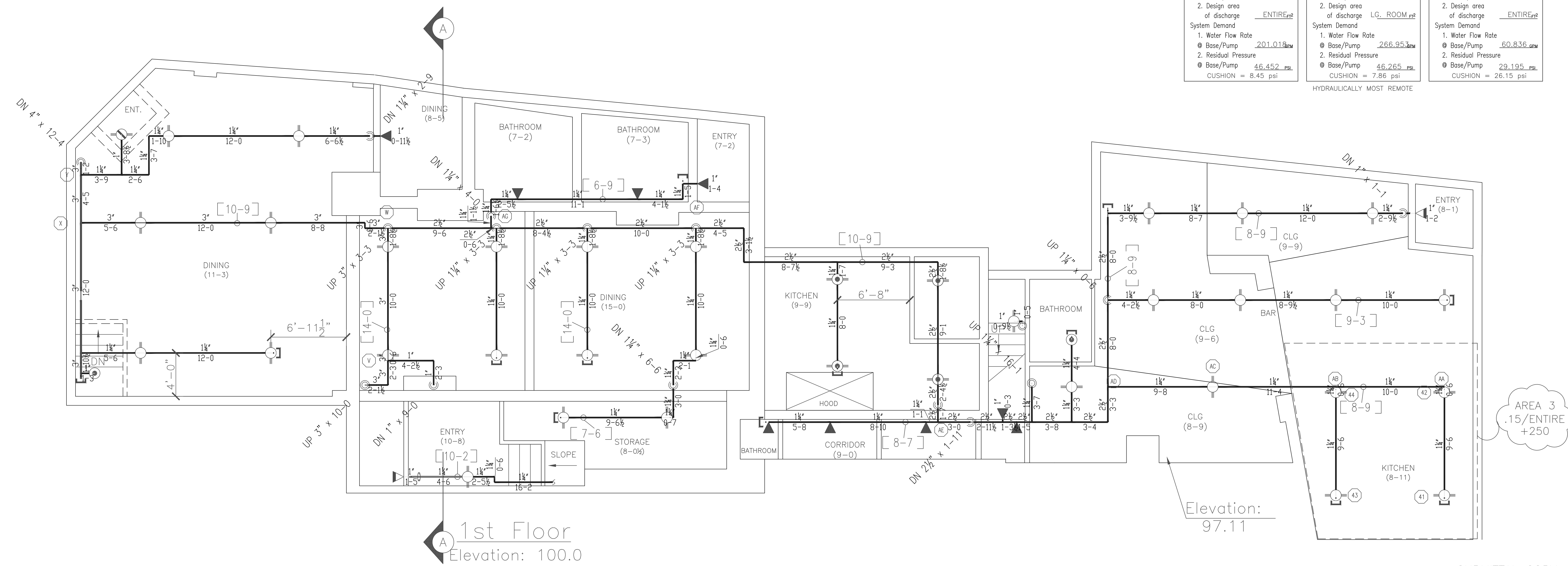
**GENERAL NOTES:**

- IT IS THE BUILDING OWNERS RESPONSIBILITY TO PROVIDE ADEQUATE HEAT FOR ALL AREAS IN THE BUILDING PROTECTED BY WET SPRINKLER SYSTEMS AND FOR ALL WATER FILLED SUPPLY PIPES, VALVES AND SYSTEM RISERS IN ALL DRY PIPE SPRINKLER SYSTEMS.
- ALL NEW PIPING IS TO BE HYDROSTATICALLY TESTED AT NOT LESS THAN 200 PSI FOR 2 HOURS, OR AT 50 PSI IN EXCESS OF THE MAXIMUM PRESSURE, WHEN THE MAXIMUM PRESSURE TO BE MAINTAINED IS IN EXCESS OF 150 PSI. (PER NFPA 13)
- WHETHER OR NOT INDICATED ON DRAWINGS, THE FOLLOWING ITEMS ARE TO BE PROVIDED:
  - SPARE HEAD CABINET WITH WRENCH (NFPA 13).
  - PROVISIONS FOR FLUSHING CONNECTIONS AND DRAINING OF ALL PIPE.
  - INSPECTORS TEST CONNECTION SHALL BE PROVIDED FOR EACH SYSTEM
    - A) FOR WET PIPE SYSTEMS SEE NFPA 13)
    - B) FOR DRY PIPE SYSTEMS SEE NFPA 13)
  - AIR PRESSURE SHALL BE MAINTAINED ON ALL DRY PIPE SYSTEMS BY AN APPROVED AUTOMATIC AIR COMPRESSOR OR PLANT AIR SYSTEM SPECIFICALLY APPROVED FOR AND CAPABLE OF AUTOMATICALLY MAINTAINING THE REQUIRED AIR PRESSURE.
  - GRIDDED WET PIPE SYSTEMS SHALL BE PROVIDED WITH A RELIEF VALVE NOT LESS THAN 1/4" IN SIZE. (NFPA 13).
- ALL PIPE 1" SHALL BE SCHEDULE 40 STEEL WITH MALLEABLE IRON FITTINGS.
- ALL PIPE 1 1/4" AND LARGER, SHALL BE SCHEDULE 10 STEEL WITH GROOVED COUPLINGS AND VICTAULIC MECHANICAL FITTINGS OR EQUIVALENT.
- ALL MECHANICAL TRADES ARE TO COORDINATE THEIR WORK WITH SPRINKLER WORK AS SHOWN ON THESE PLANS.
- ALL HANGERS AND LOCATIONS ARE TO BE IN ACCORDANCE WITH N.F.P.A. 13.
- ALL SPRINKLER HEADS IN SUSPENDED CEILING TILES ARE TO BE LOCATED IN THE CENTER OF THE NARROW DIMENSION OF THE ACOUSTICAL CEILING PANEL.
- ALL PIPING IS TO BE PITCHED IN ACCORDANCE WITH N.F.P.A. 13.
- HYDRAULIC DATA REFERENCE POINTS: (25) BELOW DECK (12")
- CENTER LINE OF PIPE ABOVE FINISH FLOOR [12'-0"] BELOW DECK (12")
- PROTECTIVE CAPS ARE TO REMAIN ON THE SPRINKLER HEADS UNTIL AFTER CEILINGS ARE INSTALLED.
- THE SCOPE OF WORK UNDER THIS CONTRACT IS TO DESIGN AND INSTALL A WET SPRINKLER SYSTEM PER NFPA 13.

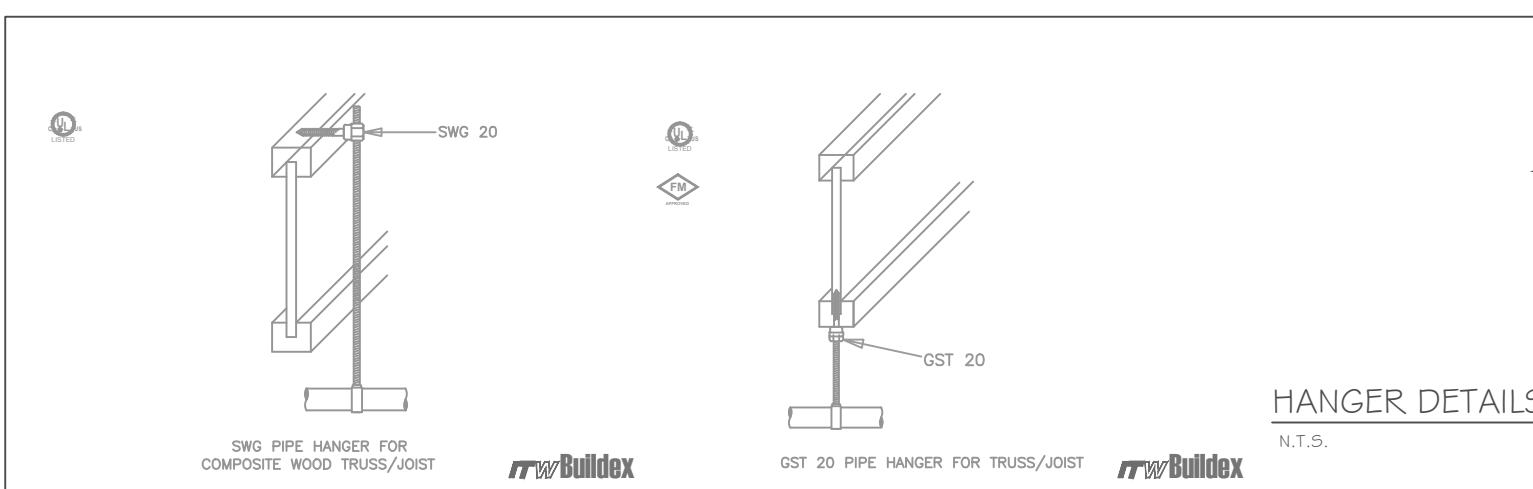


HYDRAULIC DATA NAMEPLATE		HYDRAULIC DATA NAMEPLATE		HYDRAULIC DATA NAMEPLATE	
This Building is protected by a hydraulically designed Automatic Sprinkler System		This Building is protected by a hydraulically designed Automatic Sprinkler System		This Building is protected by a hydraulically designed Automatic Sprinkler System	
Location	AREA-1	Location	AREA-2	Location	AREA-3
No. of Sprinkler	12	No. of Sprinkler	15	No. of Sprinkler	4
Basis of design		Basis of design		Basis of design	
1. Density	1.0 gpm/ft <sup>2</sup>	1. Density	1.0 gpm/ft <sup>2</sup>	1. Density	1.5 gpm/ft <sup>2</sup>
2. Design area	ENTIRE#2	2. Design area	LG. ROOM#2	2. Design area	ENTIRE#2
System Demand		System Demand		System Demand	
1. Water Flow Rate		1. Water Flow Rate		1. Water Flow Rate	
Base/Pump	201.01 gpm	Base/Pump	266.95 gpm	Base/Pump	60.836 gpm
2. Residual Pressure		2. Residual Pressure		2. Residual Pressure	
Base/Pump	46.452 psi	Base/Pump	46.265 psi	Base/Pump	29.195 psi
CUSHION = 8.45 psi		CUSHION = 7.86 psi		CUSHION = 26.15 psi	

HYDRAULICALLY MOST REMOTE



1. Type of Hazard	LIGHT/ORDINARY	2. Deflector Distance	PER SPEC
3. Pipe Type Used	BLK SCH 10/40	4. Sprinkler Area	PER SPEC
5. Type of Construction	COMBUSTIBLE		
6. Maximum Spacing Allowed	PER NFPA 13		
7. PIPE SIZING METHOD: PIPE SCHEDULE	<input type="checkbox"/>	HYDRAULICALLY CALCULATED	<input checked="" type="checkbox"/>
8. ALL HANGERS AND LOCATIONS TO BE IN ACCORDANCE WITH N.F.P.A. PAMPHLET NO. 13			
9. HIGH DEGREE TEMPERATURE SPRINKLER HEADS TO BE INSTALLED IN ACCORDANCE WITH N.F.P.A. PAMPHLET NO. 13			



HANGERS	
AS SHOWN IN DETAIL	

ABBREVIATIONS	
B	Bottom of Beam
D	Bottom of Deck
P	Bottom of Pipe
NIP	Nipple and Cap
NIC	Net in Contract
NET	Net to Scale
N.A.C.	Not in Contract
OB	Open Bar Joist
PRV	Pressure Red Valve
RM	Roof Membrane
ST	Stair
TDB	Top of Beam
TOP	Top of Pipe
TOP	Top of Slab
TOP	Top of Steel
UN	Unless Otherwise Noted
CL	Centerline
NAC	No Automatic Sprinklers
DTA	Open to Above

CONTRACT RESPONSIBILITIES										
ITEM	FFC	OTHERS								
STREET CORN										
UGD MAN										
EXCAVATION										
FLUSHING										
WIRING										
PAINTING										
TAMPER SWITCHES										
FLOW SWITCHES										
STREET CORN										

SPRINKLER HEAD LEGEND										
SYMBOL	MAKE	MODEL	SIN	FINISH	TYPE	TEMP	NPT	ORIFICE	K-FACTOR	TOTAL
	RELIABLE	F1FR 56	RA1425	BRONZE	UPRIGHT	200F	1/2"	1/2"	5.6	64
	RELIABLE	F1FR 56	RA1414	WHITE	SEMI-REC PENDENT	155F	1/2"	1/2"	5.6	4
	RELIABLE	F1FR 56	RA1435	BRONZE	FRIDE SIDEWALL	200F	1/2"	1/2"	5.6	21
	RELIABLE	F3QR	RA5734	WHITE	DRY SIDEWALL	155F	1"	1/2"	5.8	2
	RELIABLE	F1FR 56	RA1414	WHITE	SEMI-REC PENDENT	200F	1/2"	1/2"	5.6	4
	RELIABLE	F3QR	R5714	WHITE	DRY UPRIGHT	200F	1"	1/2"	5.6	1
	GLOBE	DL SERIES	GL5639	BRONZE	DRY UPRIGHT	200F	1"	1/2"	5.6	6
TOTAL										102

SUBMITTALS	
SENT TO	DATE RECEIVED
I.S.D.	
F.M.	
L.M.	
I.R.I.	
L.A.	
STATE FIRE	
LOCAL WATER	
OWNER	

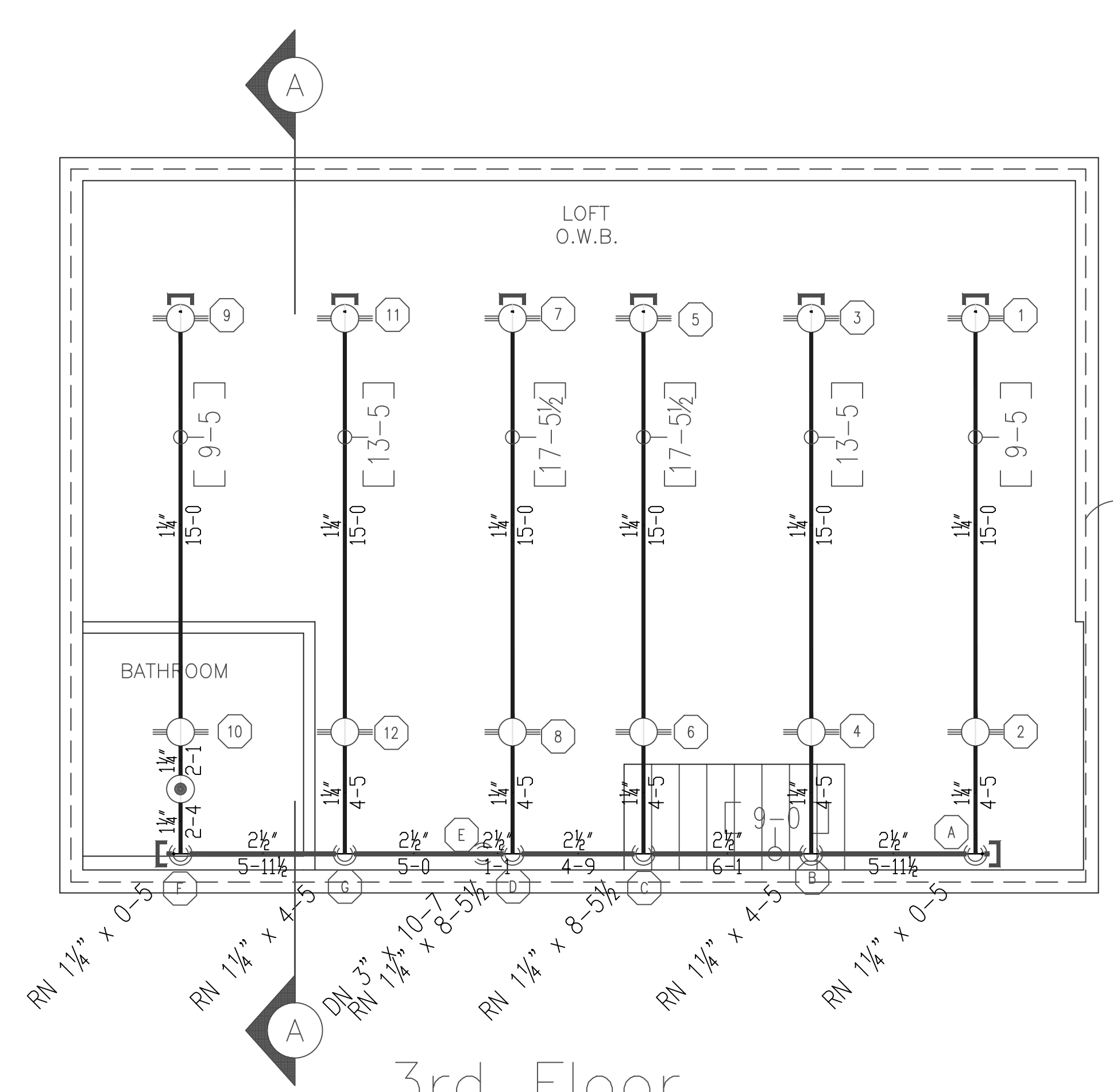
106 HIGH STREET  
106 HIGH STREET  
PORTLAND, MAINE 04101

CONTRACT WITH EAST BROWN COW

SYSTEM TYPE	NO.	DATE	DESCRIPTION
WET			
DRY			
DELUGE			
PREACTION			
ME. FIRE			
HYDRO-PRO			

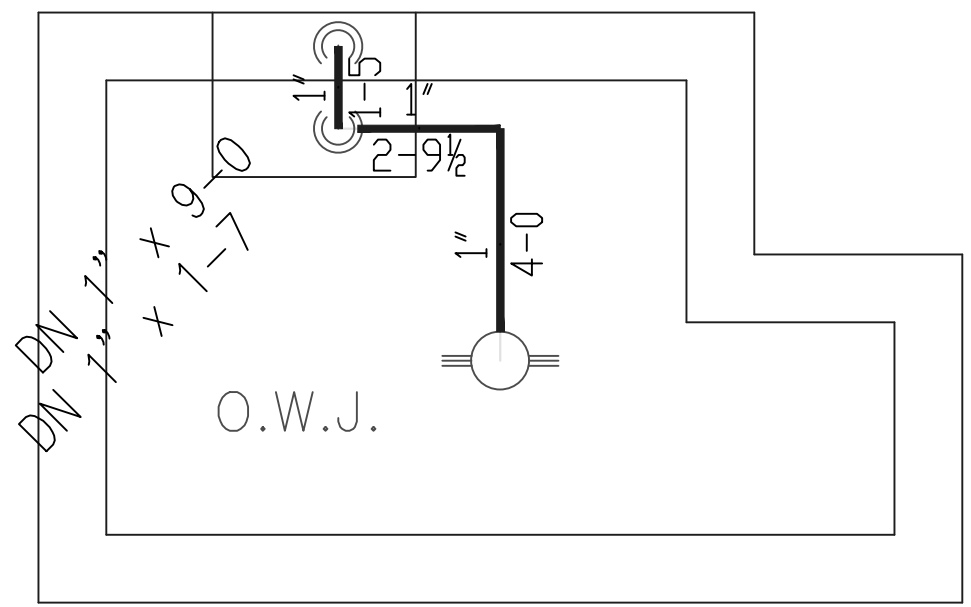
SPRINKLER SYSTEMS INC.  
P.O. BOX 1285  
LEWISTON, MAINE  
04243-1285

11/6/2013  
102  
1 of 2  
13073

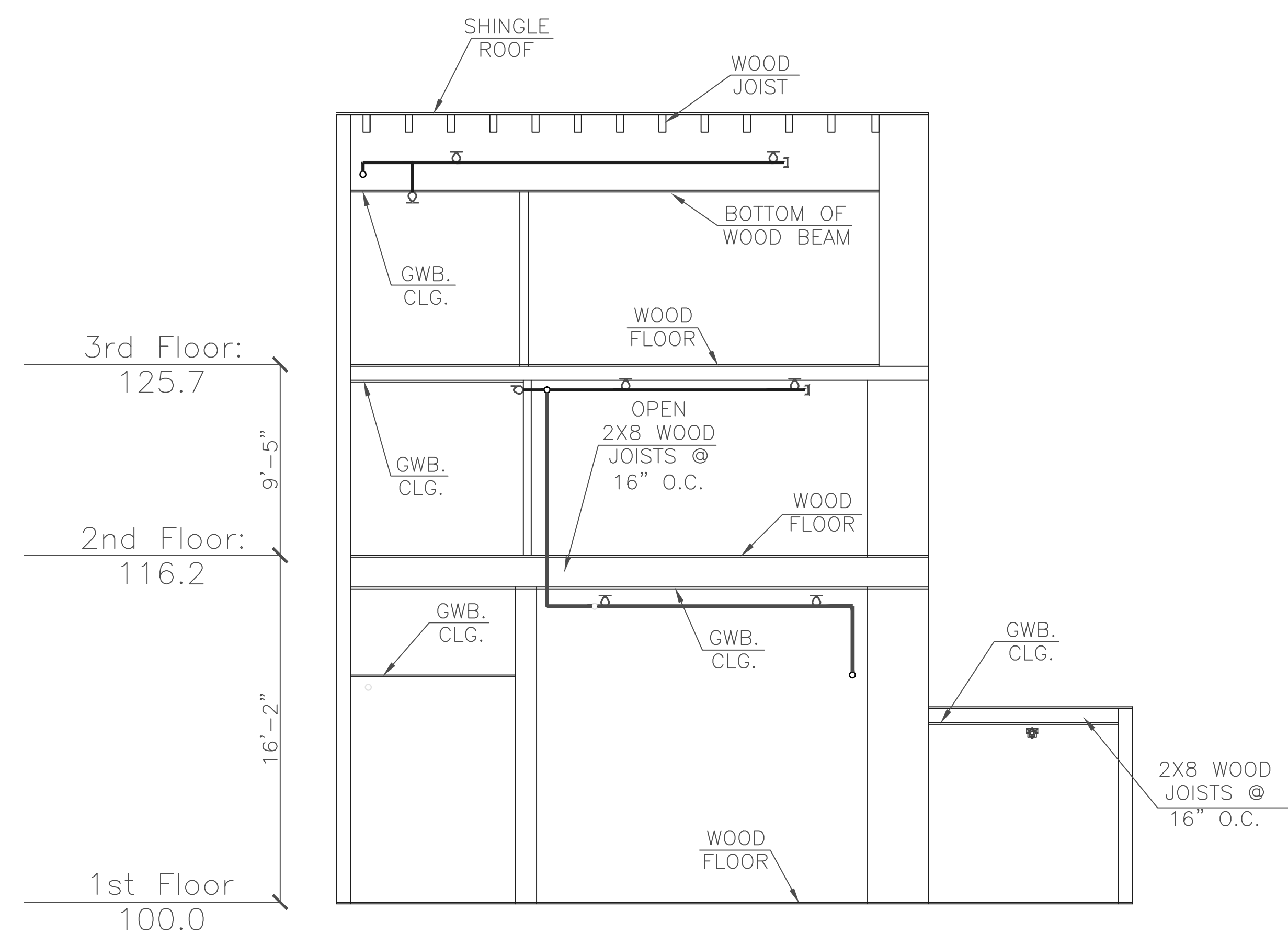


AREA 1  
10/ENTIRE  
+100

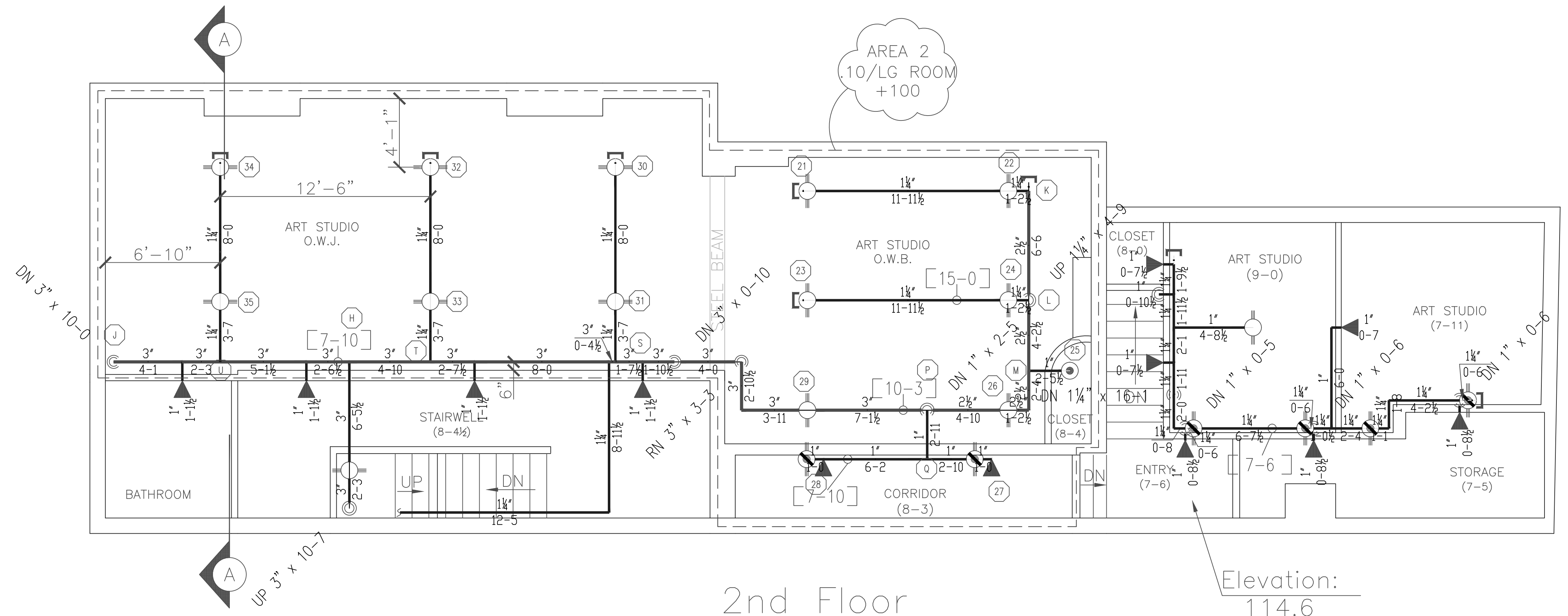
3rd Floor  
Elevation: 125.7



Restaurant Office



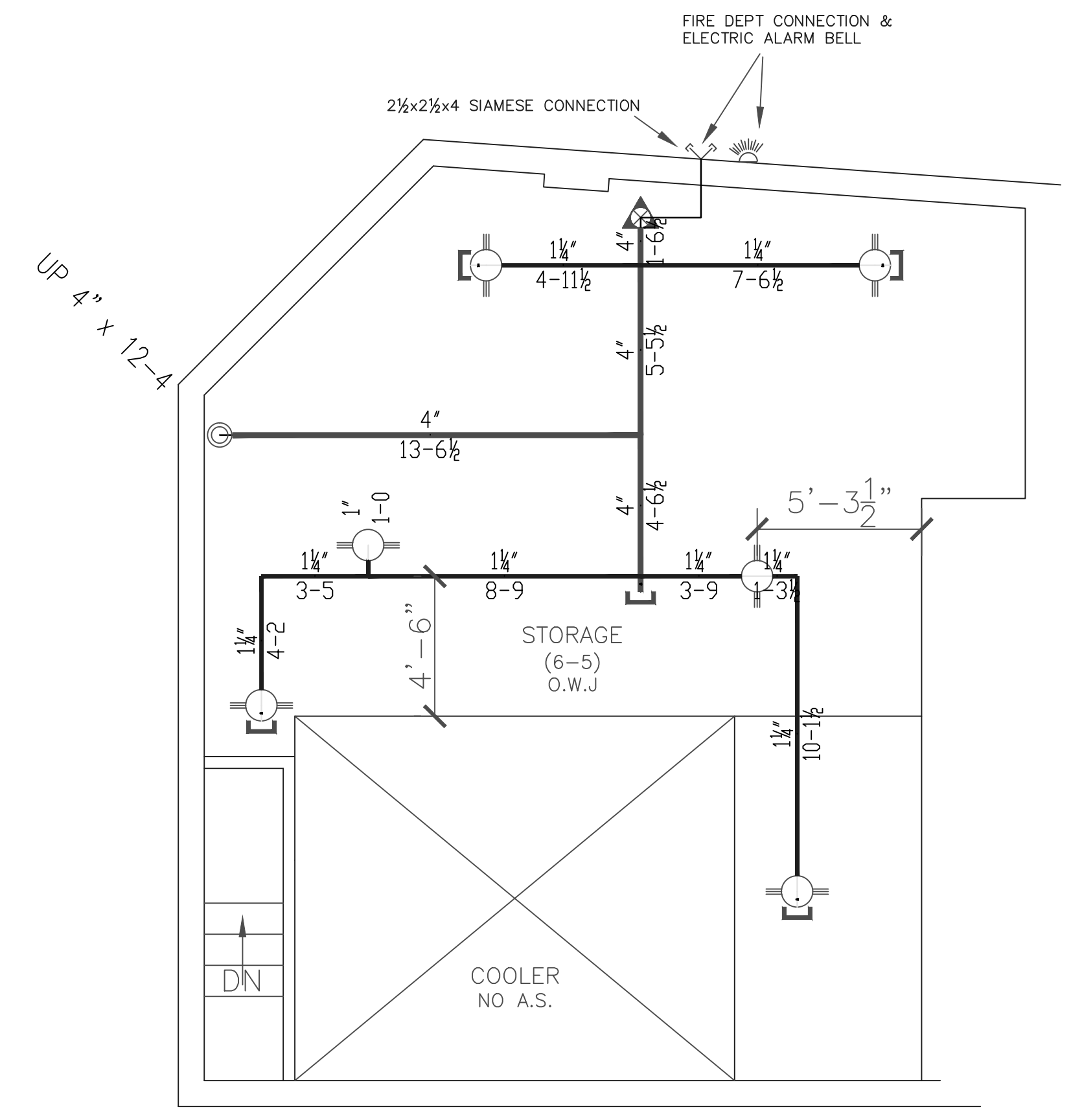
BUILDING SECTION "A"  
SCALE = "NTS"



AREA 2  
10/LG ROOM  
+100

2nd Floor  
Elevation: 116.2

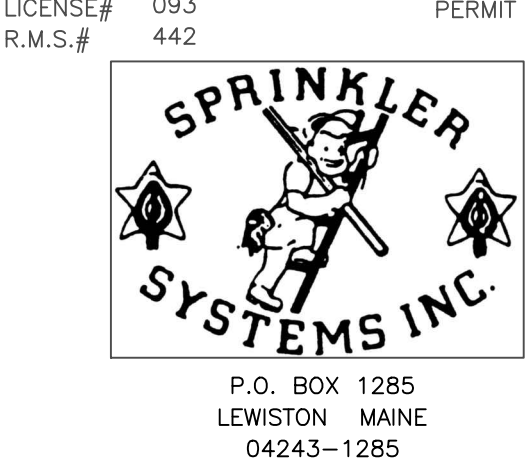
Elevation:  
114.6



Basement  
Elevation: 92.6

SPRINKLER HEAD LEGEND

SYMBOL	MAKE	MODEL	SIN	FINISH	TYPE	TEMP	NPT	ORIFICE	K-FACTOR	TOTAL



106 HIGH STREET  
106 HIGH STREET  
PORTLAND, MAINE 04101

CONTRACT WITH

SYSTEM TYPE	NO.	DATE	REVISIONS DESCRIPTION
WET			
DRY			
DELUGE			
PREACTION			
ME. LIFE			
HYDRO-PRO			

DATE: 11/6/2013  
TOTAL SPKRS ON JOB: 102  
SHEET# 2 of 2  
JOB# 13073

SUBMITTAL COPY