

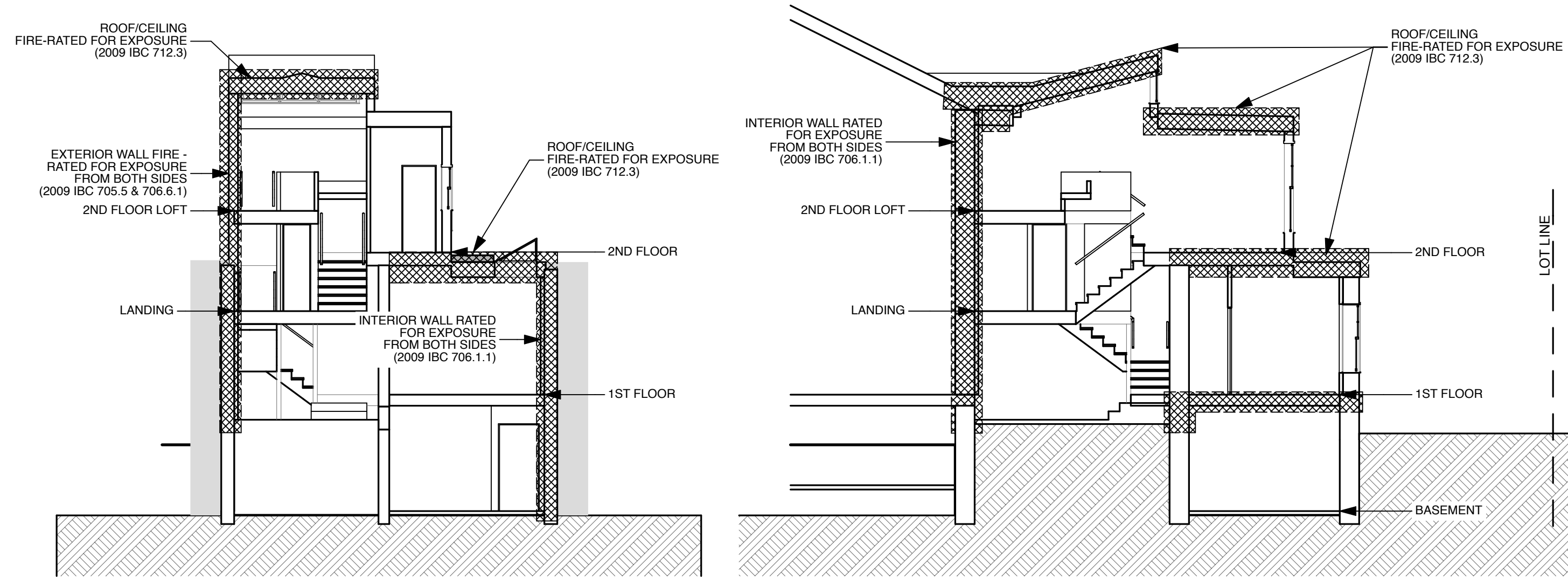


EXTENT OF UNPROTECTED OPENINGS IN EXTERIOR WALLS CLOSE TO A LOT LINE:
 NORTH-EAST WALL IS BETWEEN 5' & 10' OF LOT LINE
 ALLOWABLE PERCENTAGE OF UNPROTECTED OPENINGS = 25% (PER 2009 IBC TABLE 705.8)
 NORTH-WEST WALL IS BETWEEN 10' & 15' OF LOT LINE
 ALLOWABLE PERCENTAGE OF UNPROTECTED OPENINGS = 45% (PER 2009 IBC TABLE 705.8)
 AREA OF NORTH-EAST ELEVATION = 263 SF
 AREA OF UNPROTECTED WIN./DOOR = +/- 55 SF
 AREA OF UNPROTECTED VENTS = +/- 5 SF
 AREA OF UNPROTECTED OPENINGS = +/- 60 SF
 UNPROTECTED PERCENTAGE OF WALL = +/- 22.8%

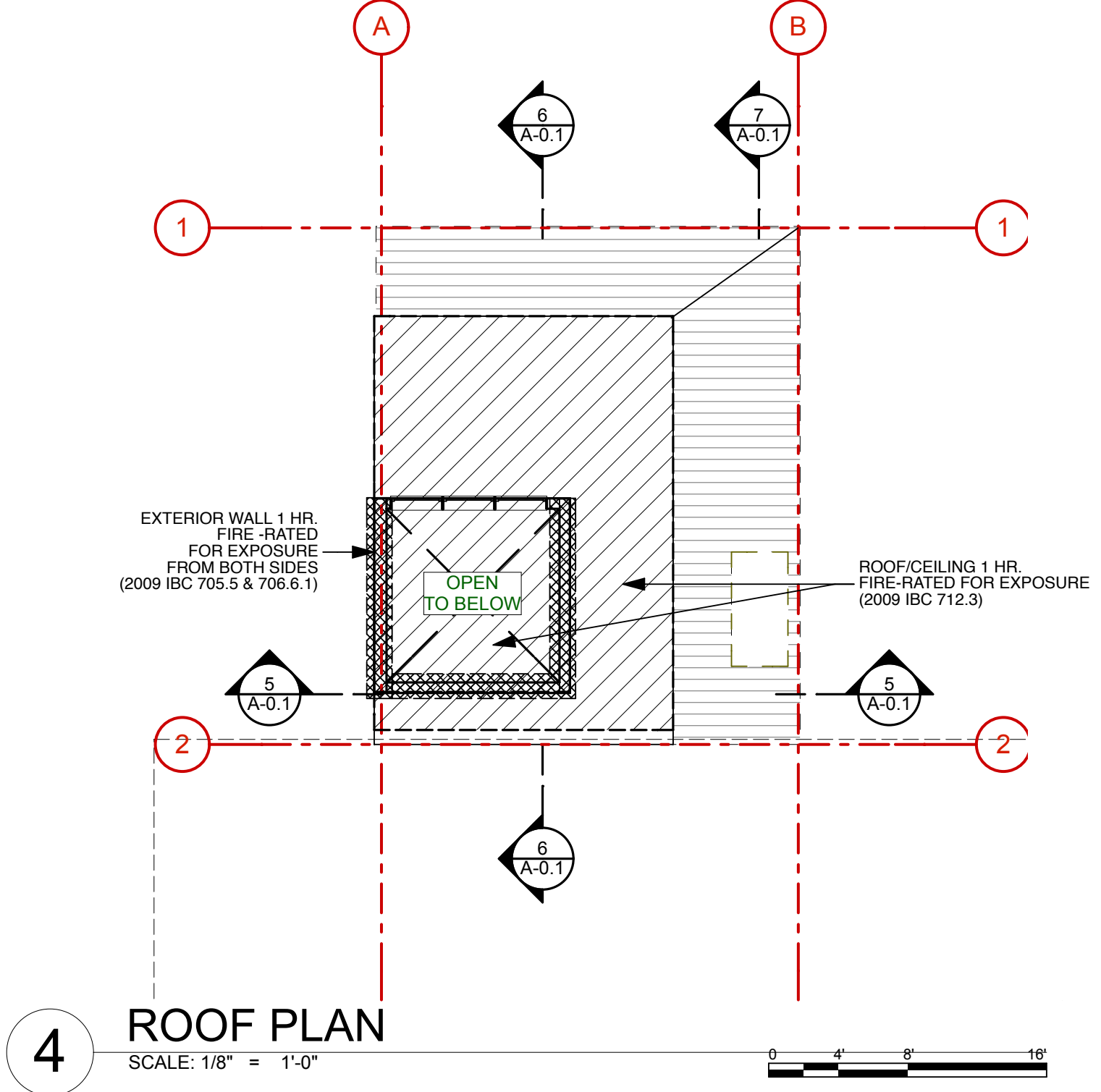
LIFE SAFETY SYMBOL KEY:
 REFER TO A5.1 FOR FIRE RATED ASSEMBLIES
 ONE (1) HOUR PARTITION / BARRIER (1-WAY ONLY)
 ONE (1) HOUR PARTITION / BARRIER (2-WAY)

LIFE SAFETY NOTES:

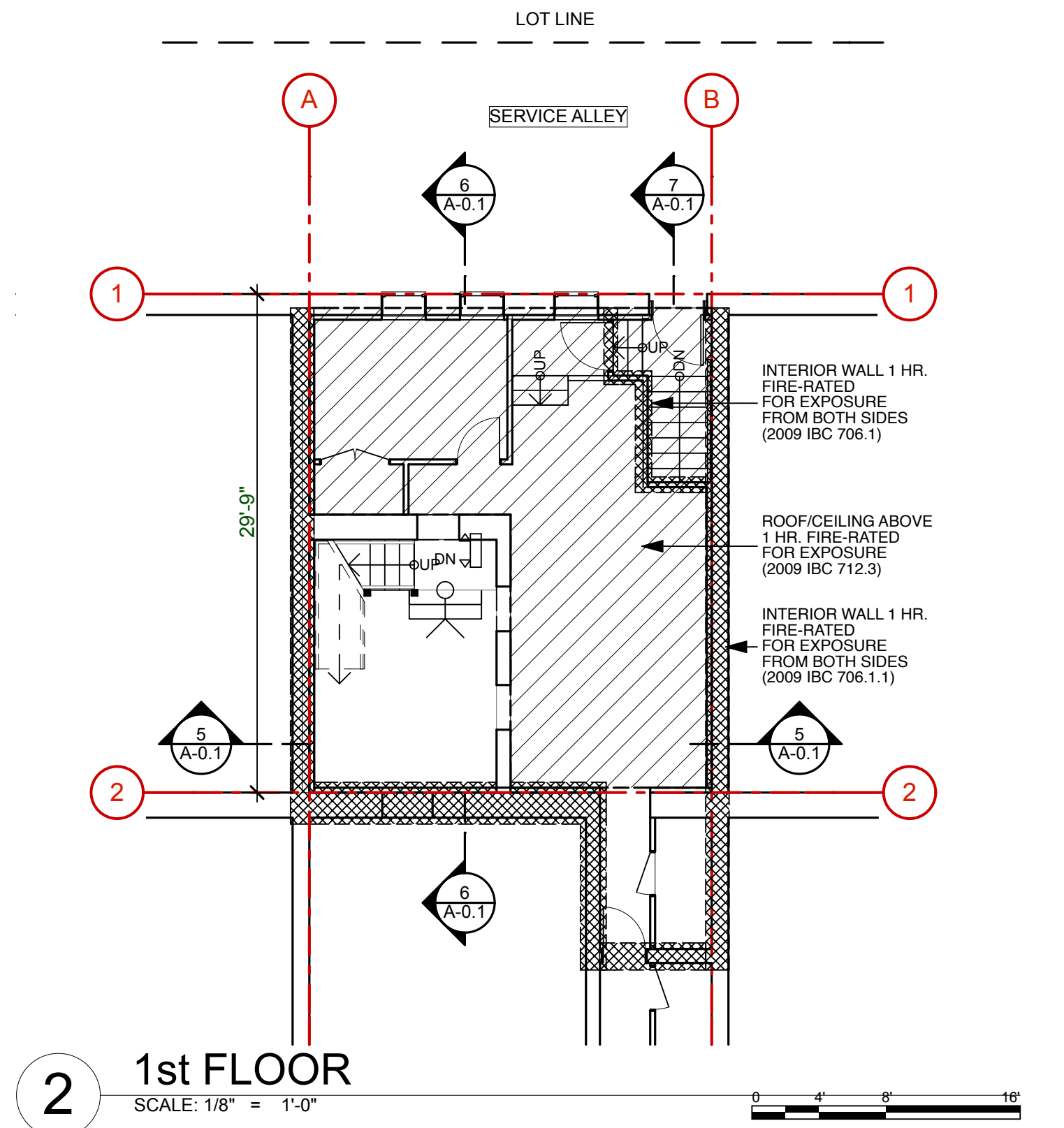
BUILDING OCCUPANCY: R2 (1 unit residential, non-townhouse)
BUILDING CODES: IBC-2009, NFPA-101: 2009
FLOOR AREA: 1st. floor = 780 SF
 2nd. floor = 423 SF
 3rd. floor = 112 SF
 Total area = 1,315 SF (gross enclosed floor area)
CONSTRUCTION TYPE: Type 5B
SPRINKLERS: Residential 13-R throughout the proposed work
BUILDING HEIGHT: One (1) basement floor below grade plane. Two (2) floors above grade plane
 Highest floor is less than 14' above lowest level of fire department vehicle access.
NUMBER OF EXITS: Building with two exits
SMOKE ALARMS: To be located on each floor as per IBC 2009 / NFPA 101



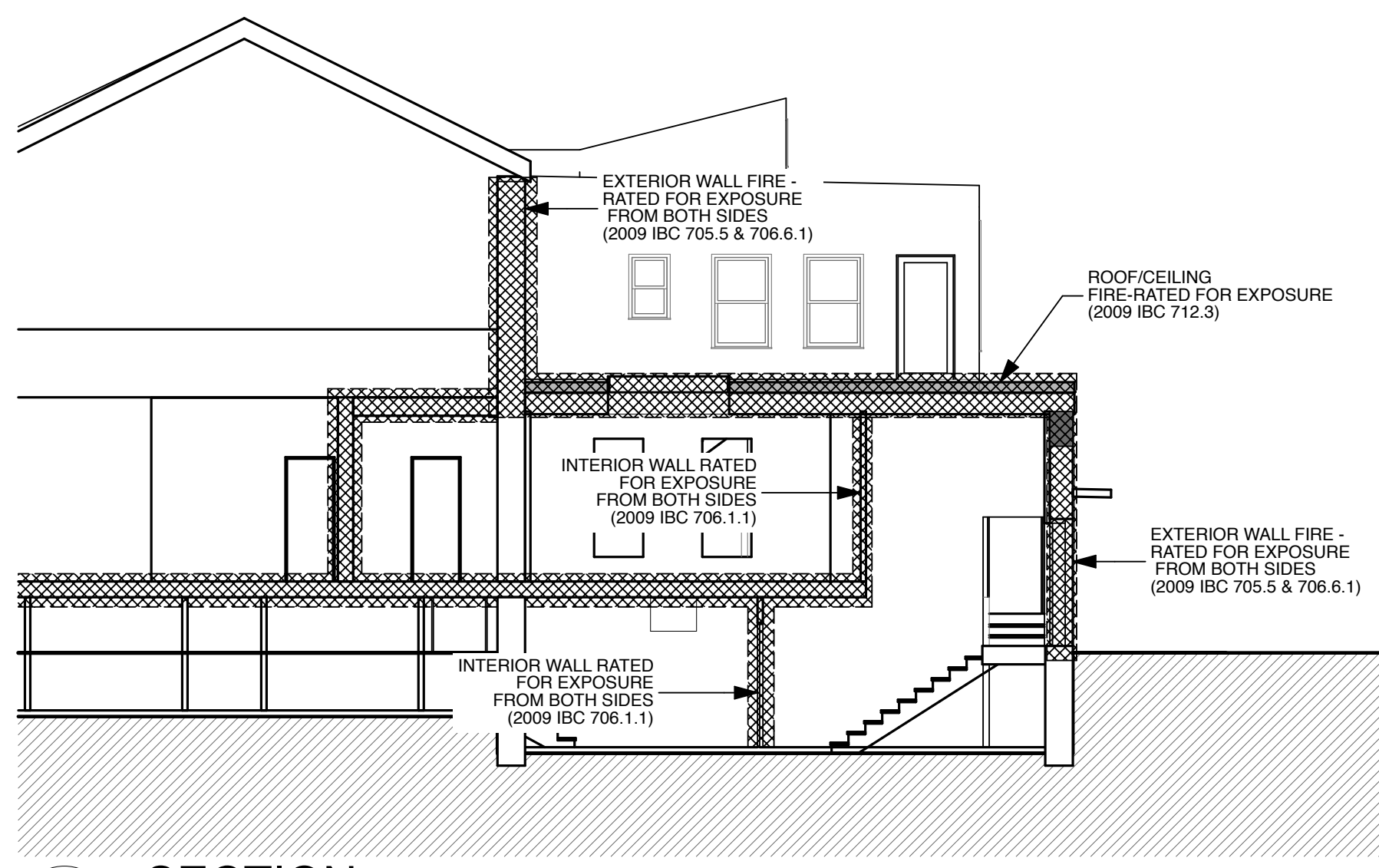
5 SECTION SCALE: 1/8" = 1'-0"
 6 SECTION SCALE: 1/8" = 1'-0"



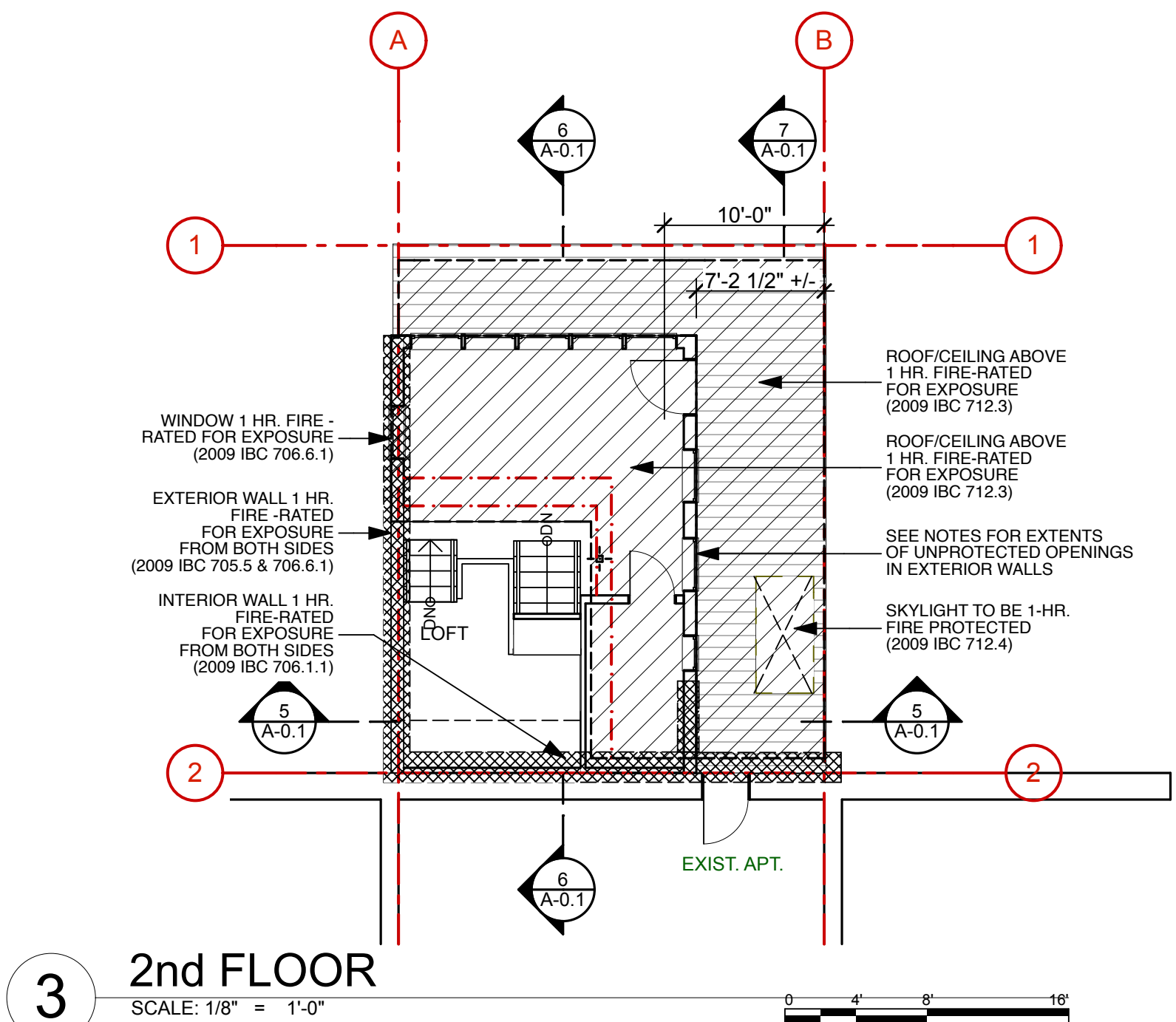
4 ROOF PLAN SCALE: 1/8" = 1'-0"



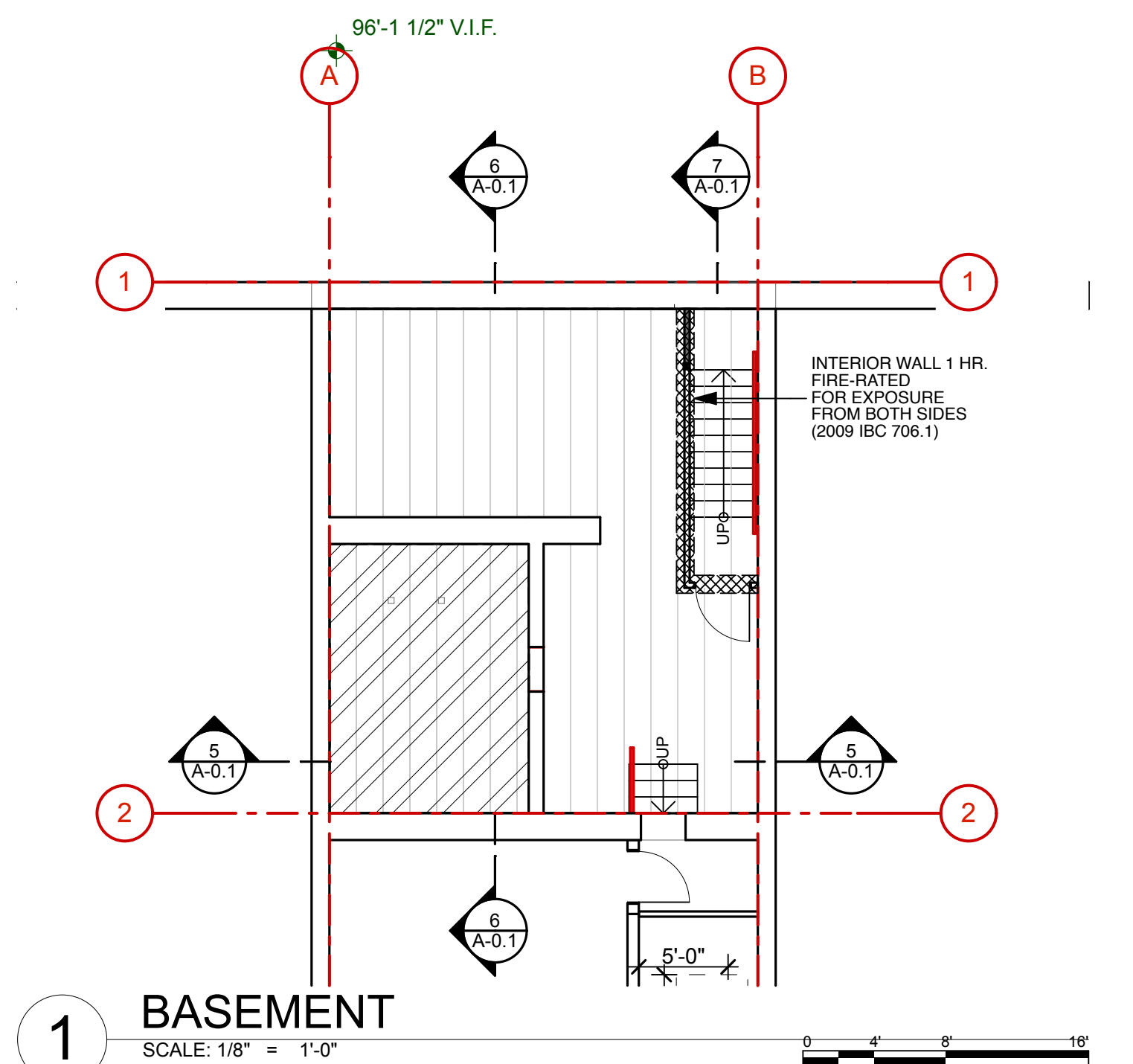
2 1st FLOOR SCALE: 1/8" = 1'-0"



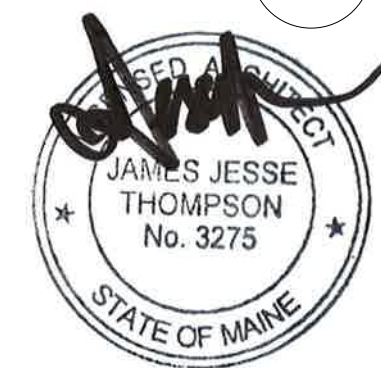
7 SECTION SCALE: 1/8" = 1'-0"



3 2nd FLOOR SCALE: 1/8" = 1'-0"



1 BASEMENT SCALE: 1/8" = 1'-0"

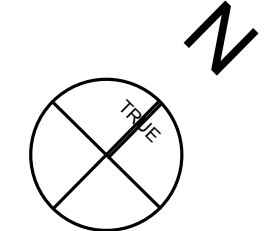


FOR PERMIT

PROJECT:
 133 SPRING ST
 JOHN STADLER
 133 SPRING ST
 PORTLAND, ME

DRAWING: LIFE SAFETY
 SCALE:
 DATE: JUNE 6, 2013

DRAWN BY: JJT
 REVISED:



A-O.1