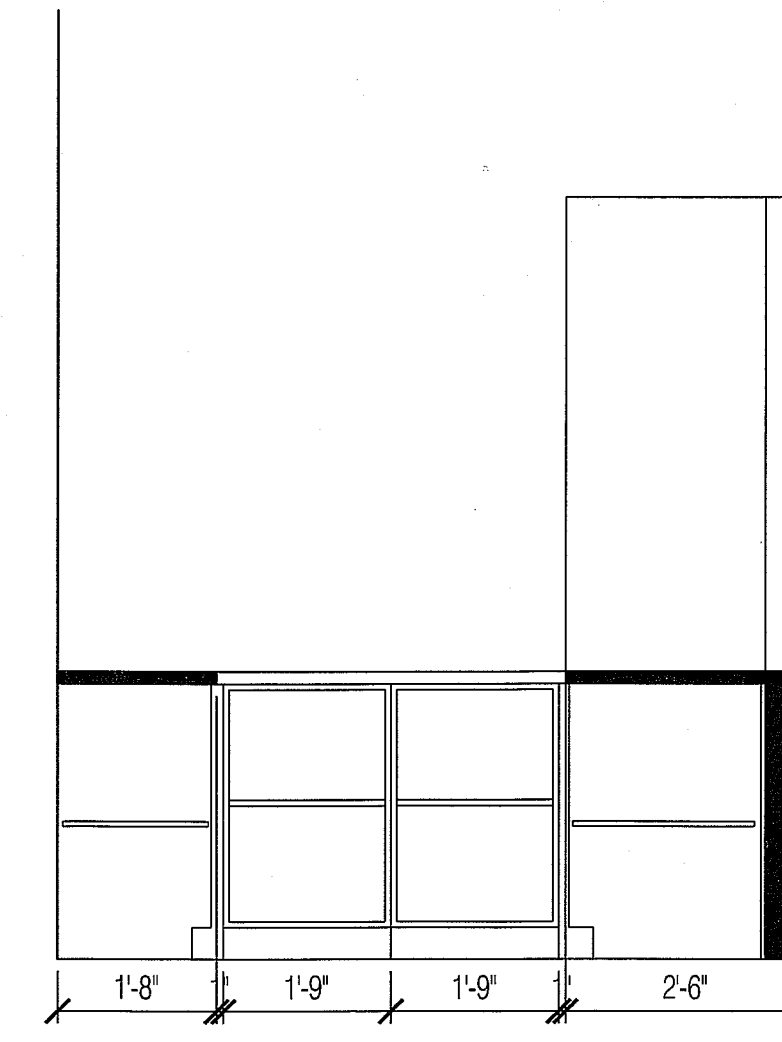
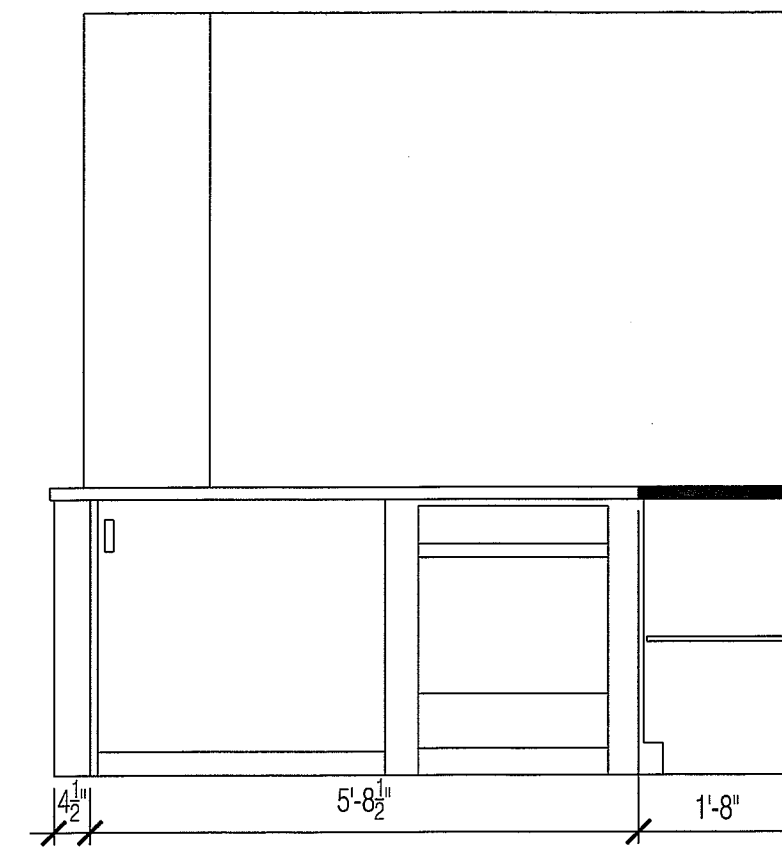
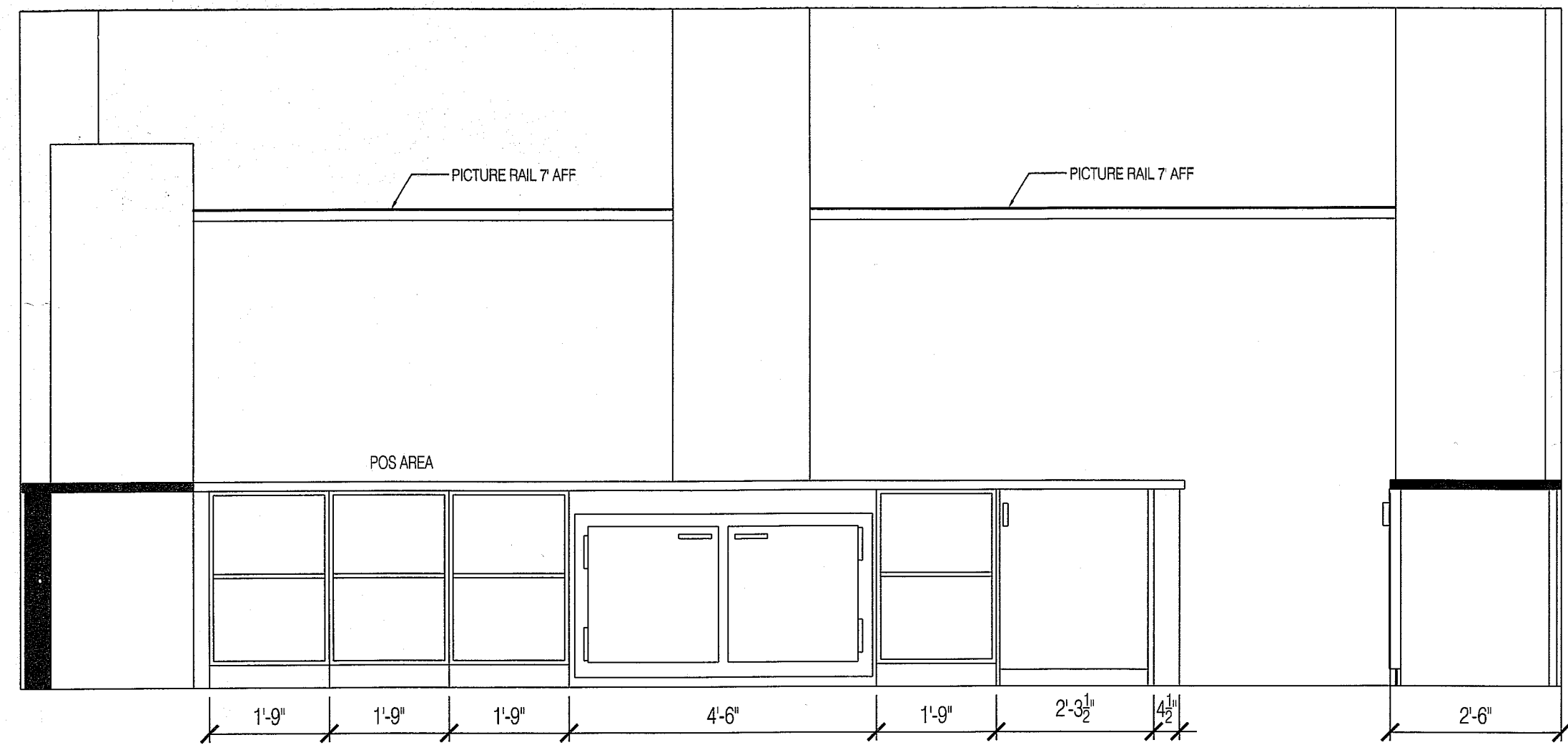
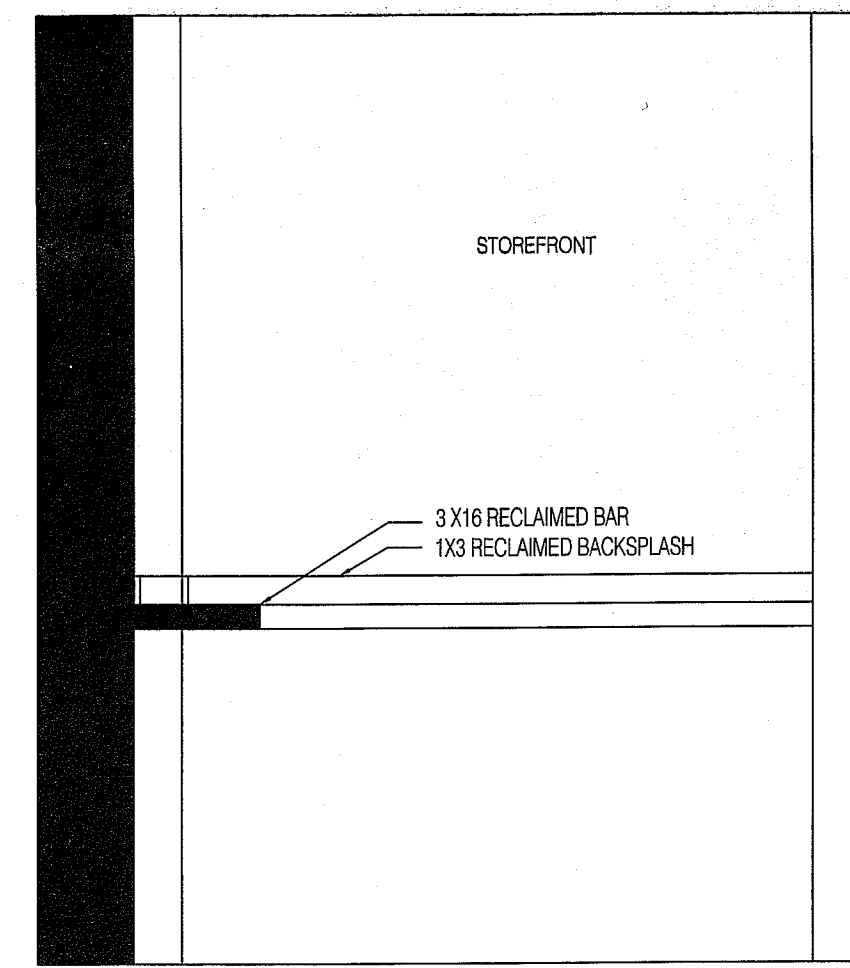


1 CREAMER AND RETAIL ELEVATION
1/2" = 1'-0"

2 COFFEE POS COUNTER ELEVATION
1/2" = 1'-0"

3 RETAIL DISPLAY, REACH-IN AND BAR ELEVATION
1/2" = 1'-0"

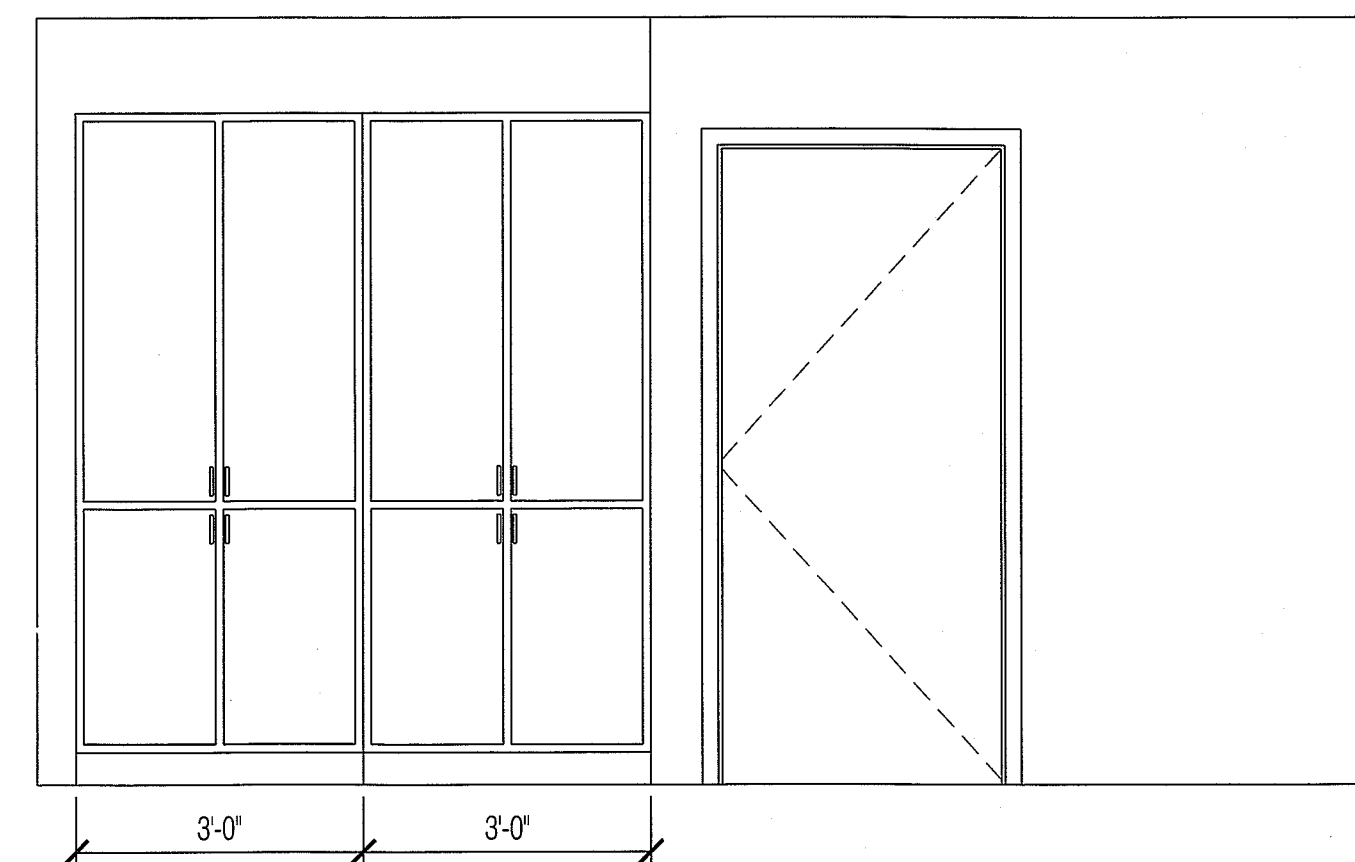
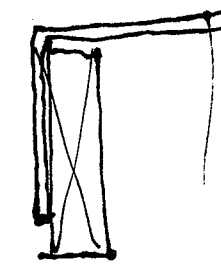
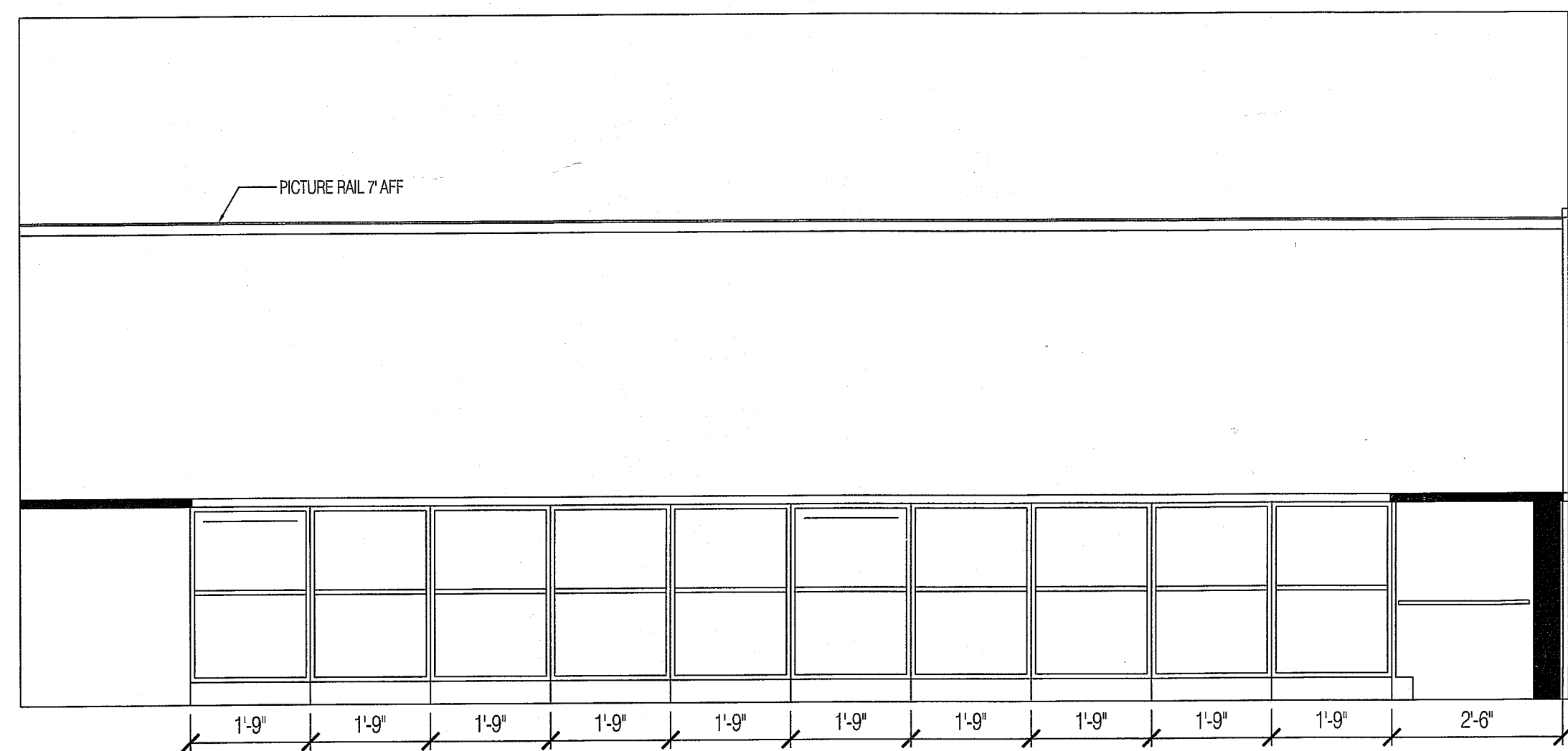


4 BAR AT STOREFRONT ENTRANCE ELEVATION
1/2" = 1'-0"

5 INSIDE BAR ELEVATION
3/8" = 1'-0"

6 INSIDE BAR ELEVATION (2)
1/2" = 1'-0"

8 INSIDE BAR ELEVATION (4)
3/8" = 1'-0"



7 INSIDE BAR ELEVATION (3)
3/8" = 1'-0"

9 STORAGE ELEVATION
3/8" = 1'-0"

CBD CONGO

ELEVATIONS

PRELIMINARY SET

SHEET TITLE

REVISION

DRAWN ###

DATE:

12/22/2015

A-1.2