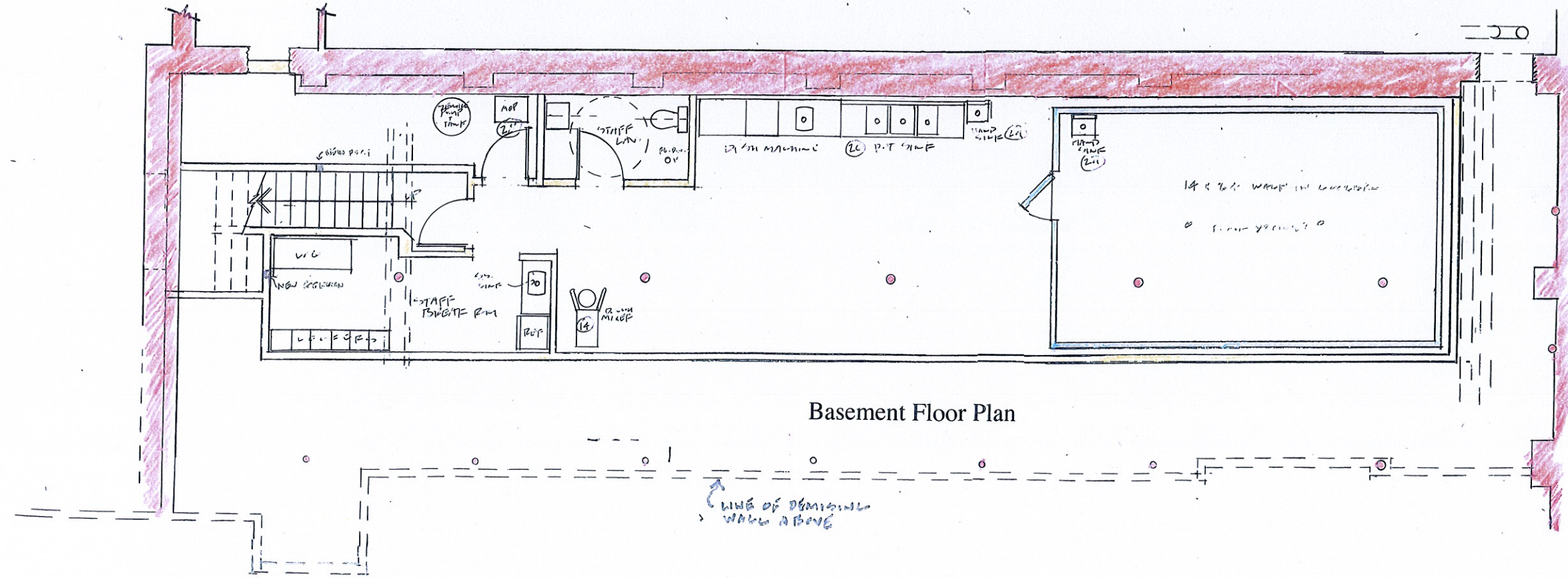


Street Floor Plan

**SEATING**

LUNCH/BAR ACCESSIBLE TABLE 34" H.	20
BAR-COUNTER STOOLS 32	
PTABLES	
ACCESSIBLE TABLE 34" H.	
BANQUETTES	16-18
ALL TABLES ACCESSIBLE 30" H.	
BOOTH	20
<b>TOTAL SEATING</b>	<b>88-90</b>



Basement Floor Plan

618 Congress Street  
 Portland, Maine  
 for  
 Lazzari LLC

Buell Heminway  
 ARCHITECTS  
 PO Box 17733 DTS ~ Portland, Me 04112  
 (207) 772-8892 ~ FAX 772-2870  
 bheminway@gwi.net

**Plans**

Street Floor and Basement Floor

RESTAURANT SEATING

Date: April 28, 2015 10/5/15  
 Scale: 1/8" = 1'-0"  
 By: BHH