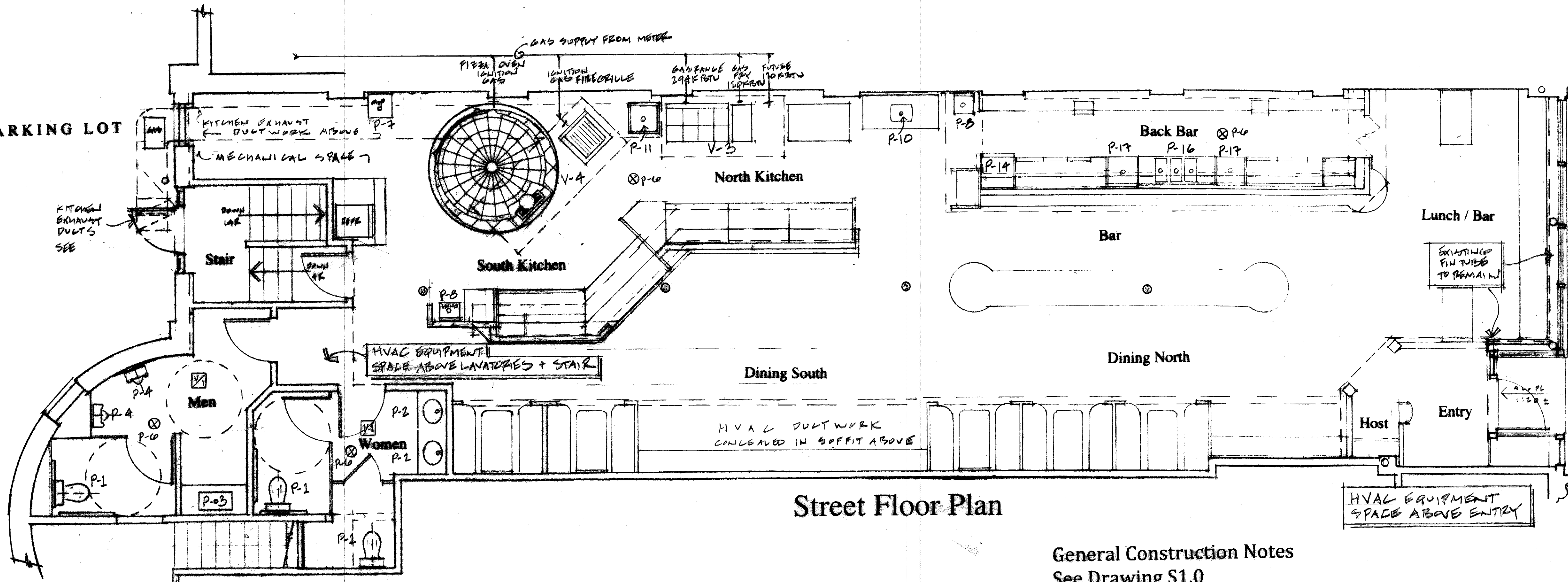


**Mechanical Notes**

- Plumbing**
- The Plumbing Contractor is responsible for Design and Execution of the system in accordance with Maine State Plumbing Code and requirements of the City of Portland, and for obtaining the required permits. All work shall be supervised by a licensed Master Plumber. The work shall include furnishing and installation of all supply, drain, waste and vent piping, and installation of specified fixtures whether supplied by the Plumbing Contractor or by others.
  - Gas piping and connections shall comply with applicable Codes, requirements of the Gas Utility, and the City of Portland.
  - The Plumbing Contractor shall schedule, and be present at all required inspections by the City of Portland.
- Heating, Venting and Air Conditioning**
- HVAC design shown is to indicate general intent with regard to location of ductwork only. It is the responsibility of the HVAC contractor obtain all permits, and to design and install a safe and efficient HVAC system which is in conformance in all respects with design requirements of applicable Mechanical Codes adopted by the City of Portland and the State of Maine.
  - The HVAC Contractor shall coordinate the locations of all HVAC equipment, piping and ductwork with the Architectural and Electrical Drawings, and shall schedule all required inspections by City of Portland.
- Kitchen Equipment Venting**
- Kitchen Equipment Venting design shown is to indicate general intent with regard to location of hoods and ductwork only. It is the responsibility of the kitchen venting contractor obtain all permits, and to design and install a safe and efficient kitchen venting system which is in conformance in all respects with design requirements of applicable Mechanical Codes adopted by the City of Portland and the State of Maine, including NFPA 211 for solid fuel appliances.
  - Exhaust systems for gas and wood fired kitchen equipment shall be vented separately in dedicated ductwork for each use leading to the south exterior wall of the building. Fans shall be roof mounted. Consult Architectural drawings for exterior elevation of proposed kitchen exhaust ductwork.
  - Furnish and Install makeup air system, fire suppression system and vapor proof lighting for both kitchen exhaust hoods.

PAVED PARKING LOT



**Street Floor Plan**

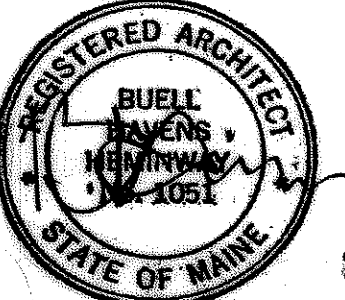
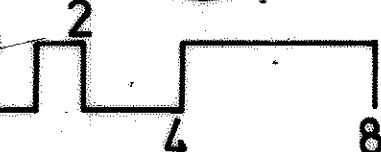
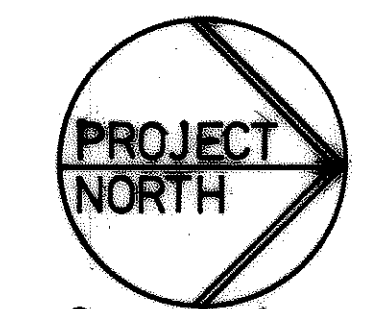
**General Construction Notes**  
See Drawing S1.0

**PLUMBING FIXTURE + EXHAUST VENTING SCHEDULE**

TAG	FIXTURE	SUPPLY / DRAIN	REMARKS
P-1	HANDICAP WATER CLOSET	ELONGATED BOWL / FLUSH VALVE OR INSULATED TANK	FLOOR MOUNTED
P-2	OVAL WHITE CHINA LAVATORY	4" CENTER SET FAUCET 1 WITH PADDLE HANDLES, STEAMER DRAIN	COUNTER TOP MOUNTED
P-3	ELONGATED 2 GANG LAVATORY	2 - 4" CENTER SETS - " " " "	HANDICAP PROTECTION UNDER
P-4	WATERLESS URINAL	DRAIN ONLY	WALL HUNG - 1' 6" HAND CAP HEIGHT
P-5	WALL HUNG ACCESSIBLE LAV.	4" CENTER SET FAUCET, CONDENSED SPOUT, PADDLE HANDLES	HANDICAP PROTECTION UNDER ALL LAVS.
P-6	FLOOR DRAINS	TRAP SEAL PRIMER PER CODE	STREET (FRAME) + (SEAL) UNDER FLOOR
P-7	FLOOR MOUNTED MOP SINK	3/4" DRAIN	FURNISHED BY OWNER'S SUPPLIER
P-8	HAND SINK - WALL MOUNT	1 1/2" DRAIN	INSTALLED BY CONTRACTOR
P-9	BREAK ROOM SINK	2 1/2" x 2 1/2" x 9" STAINLESS	COUNTER TOP MOUNTED
P-10	BAR SINK FOR COFFEE/TEA	18" x 18" STAINLESS	" " " "
P-11	PUMP SINK + POT FILLER	3/8" x 18" x 18" x 18" x 18" x 18"	FURNISHED BY OWNER'S SUPPLIER

TAG	FIXTURE	SUPPLY / DRAIN	REMARKS
P-12	3 COMPARTMENT POT SINK	SUPPLY FURNISHED WITH SINK	FURNISHED BY OWNER
P-13	DISH MACHINE + DISHTABLE	1/2" HOT WATER FROM P-15, DRAIN PER CODE	INSTALLED BY CONTRACTOR
P-14	GLASS WARMER IN BACK BAR	1/2" HOT WATER FROM P-15, DRAIN PER CODE	" " " "
P-15	BOOSTER HOT WATER HEATER	FOR P-13 + P-14, GAS FIRED	PROVIDES P.T RELIEF VALVE
P-16	3 COMPARTMENT BAR SINK	SUPPLY FURNISHED WITH SINK, DRAIN PER CODE	STAINLESS STEEL
P-17	ICE BIN	1/2" NPT DRAIN	" " " "
P-18	SEWAGE PUMP + RESERVOIR	TO BUILDING WASTE PIPE @ WEST WALL ABOVE	" " " "
P-19	SHOWER VALVE - LEVEL FLOOR	SYMBOLS OF EQUAL W/ VOLUME CONTROL	" " " "
V-1	LAVATORY VENT FAN - PALMROLL	EV LOUVER TO 6" RIGID DUCTWORK	" " " "
V-2	SCULLERY VENT FAN - OVER DISH MACHINE + POT SINK	FANTECH FE160 WITH VOLUME CONTROL + HUMIDISTAT SWITCH	" " " "
V-3	KITCHEN VENT HOOD F/ GAS FIRED EQUIPMENT	" " " "	" " " "
V-4	VENT HOOD F/ SOLID FUEL (WOOD) FIRED EQUIPMENT	" " " "	" " " "

Graphic Scale 1/4 inch = 1 foot



618 Congress Street  
Portland, Maine

Restaurant  
for  
Lazzari LLC

**Buell Heminway**  
ARCHITECTS  
PO Box 17733 DTIS - Portland, Me 04112  
(207) 772-8892 - FAX 772-2870  
bheminyaw@awi.net

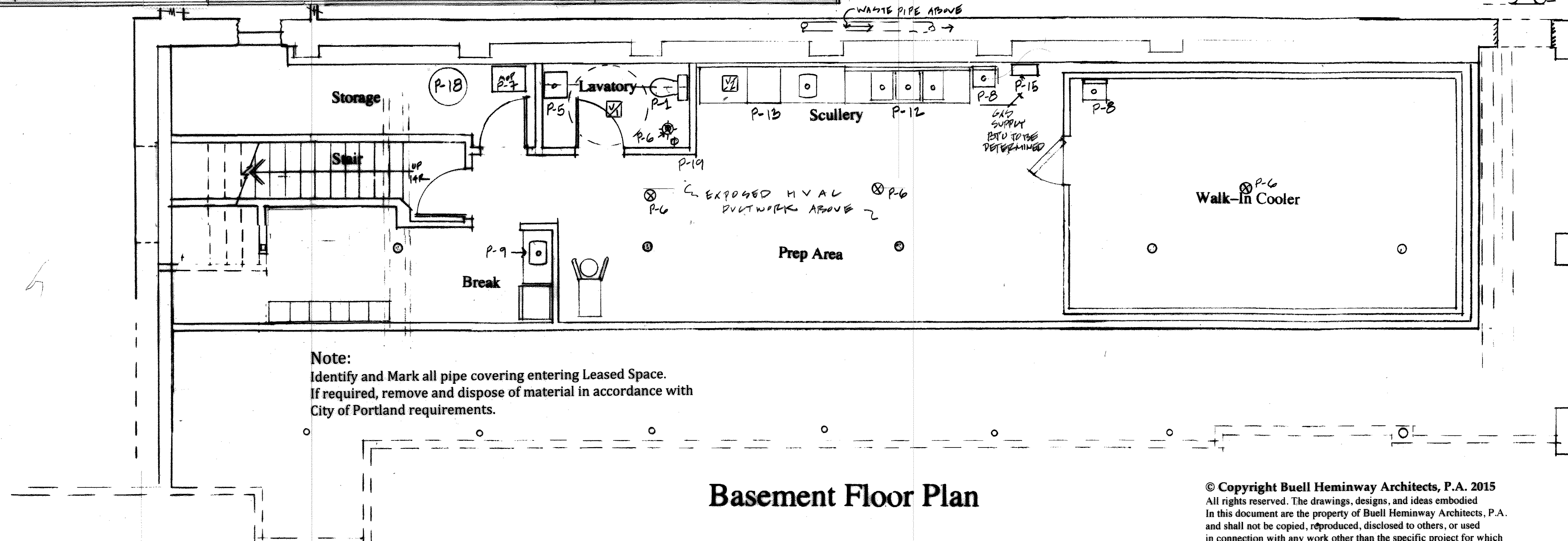
Drawing Number and Title

**M-1**  
Plumbing, Venting,  
HVAC  
Plans, Schedules, Notes

Date: June 30, 2015  
Scale: 1/4"=1'-0"  
By: Buell

**Note:**  
Identify and Mark all pipe covering entering Leased Space.  
If required, remove and dispose of material in accordance with  
City of Portland requirements.

**Basement Floor Plan**



© Copyright Buell Heminway Architects, P.A. 2015  
All rights reserved. The drawings, designs, and ideas embodied  
in this document are the property of Buell Heminway Architects, P.A.  
and shall not be copied, reproduced, disclosed to others, or used  
in connection with any work other than the specific project for which  
they have been prepared, in whole or in part, without prior written  
authorization by Buell Heminway Architects, P.A..