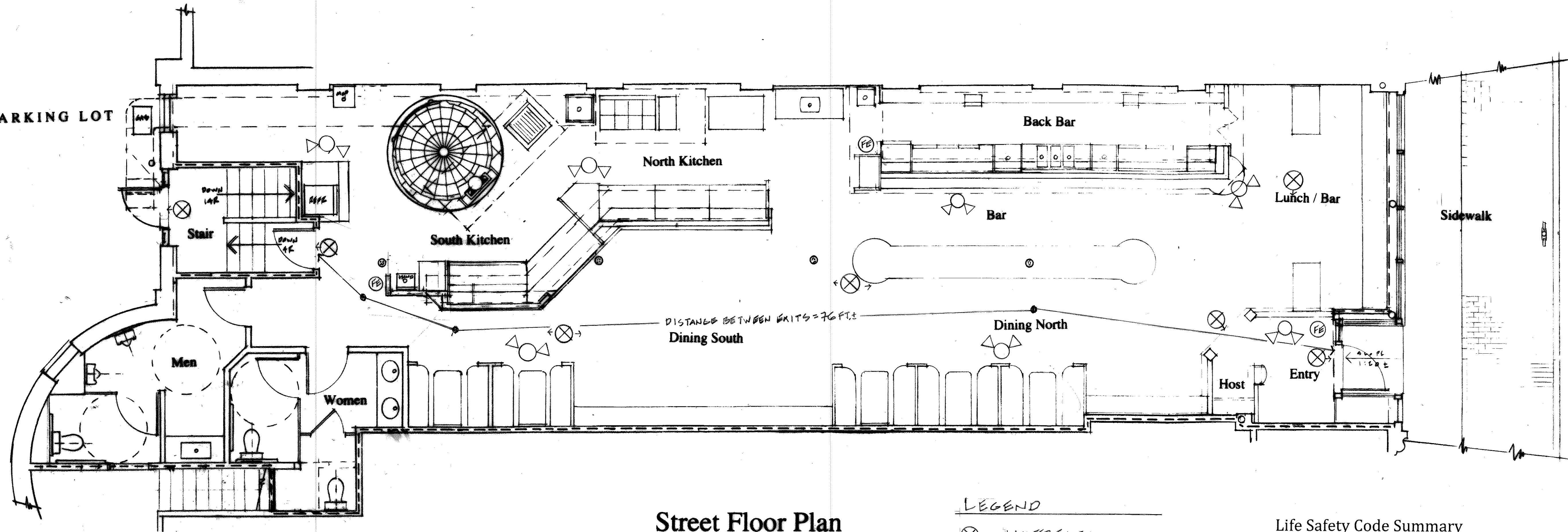


PAVED PARKING LOT



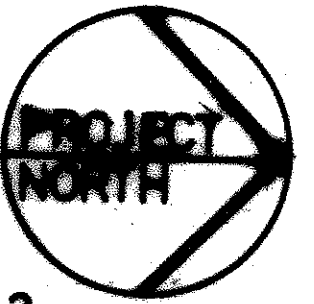
Street Floor Plan

LEGEND

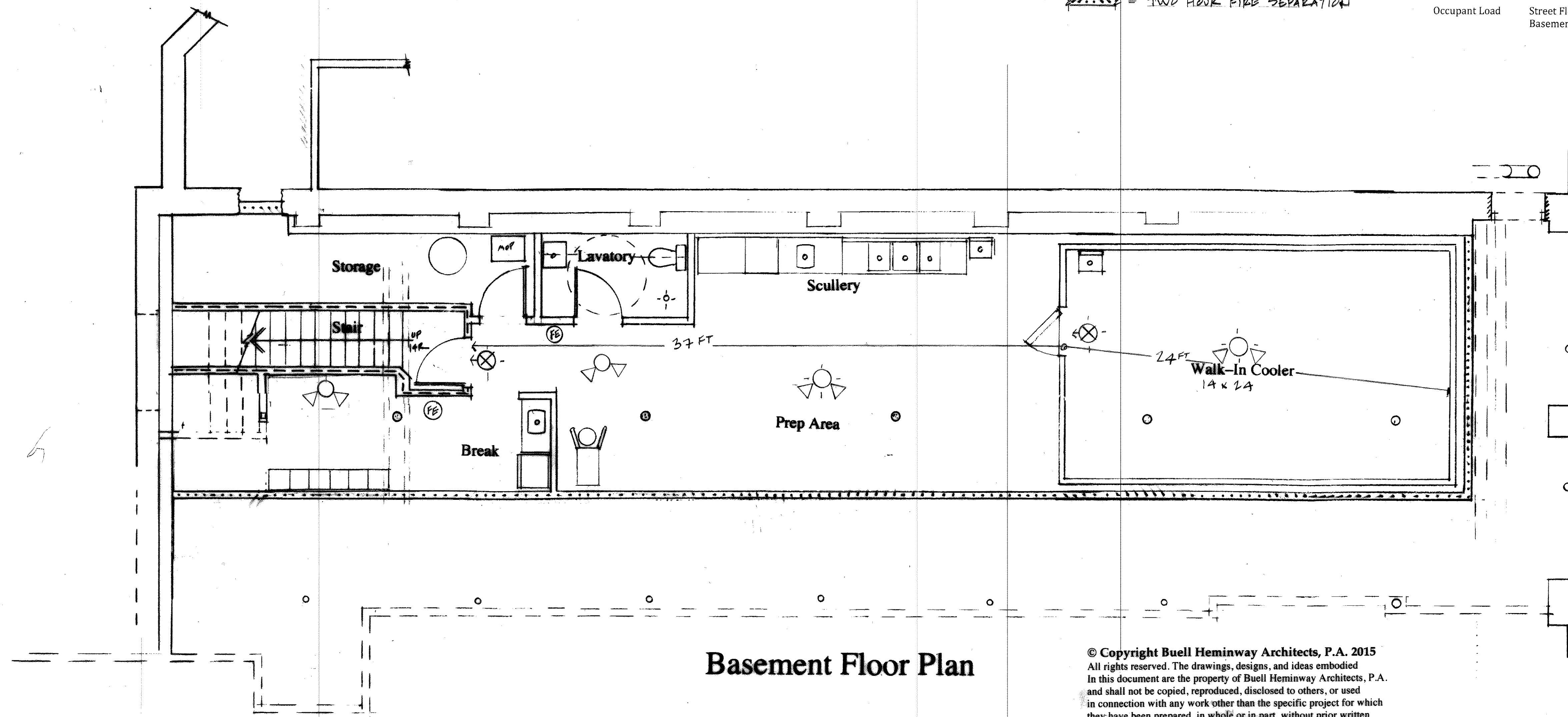
- ⊗ = LIGHTED EXIT SIGN
- ⊙ = EMERGENCY LIGHT
- ⊕ = FIRE EXTINGUISHER
- ▬ = ONE HOUR FIRE SEPARATION
- ▬ = TWO HOUR FIRE SEPARATION

Life Safety Code Summary

Construction Type: Type IV, heavy timber + masonry walls
 Occupancy Classification: Street Floor - Assembly A-2 Ordinary Hazard
 Basement Floor - Business (B) supportive of or incidental to Assembly occupancy.
 Interior Finish: Exit Enclosures - Class A
 Assembly - Class C (occupant load < 300)
 Business - Class C
 Occupant Load: Street Floor (Assembly) - 106
 Basement Floor (Business) - 6

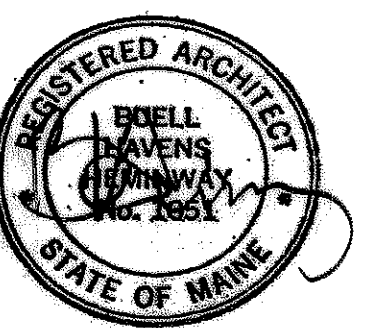


Graphic Scale 1/4 inch = 1 foot



Basement Floor Plan

© Copyright Buell Heminway Architects, P.A. 2015
 All rights reserved. The drawings, designs, and ideas embodied in this document are the property of Buell Heminway Architects, P.A. and shall not be copied, reproduced, disclosed to others, or used in connection with any work other than the specific project for which they have been prepared, in whole or in part, without prior written authorization by Buell Heminway Architects, P.A.



618 Congress Street
 Portland, Maine

Restaurant
 for
 Lazzari LLC

Buell Heminway
 ARCHITECTS
 PO Box 17733 DT5 - Portland, Me 04112
 (207) 772-8892 - FAX 772-2570
 bheminway@gwi.net

Drawing Number and Title

LS-1
 Life Safety Plans
 Street Floor
 Basement Floor

Date: June 30, 2015
 Scale: 1/4" = 1'-0" + shown
 By: Buell