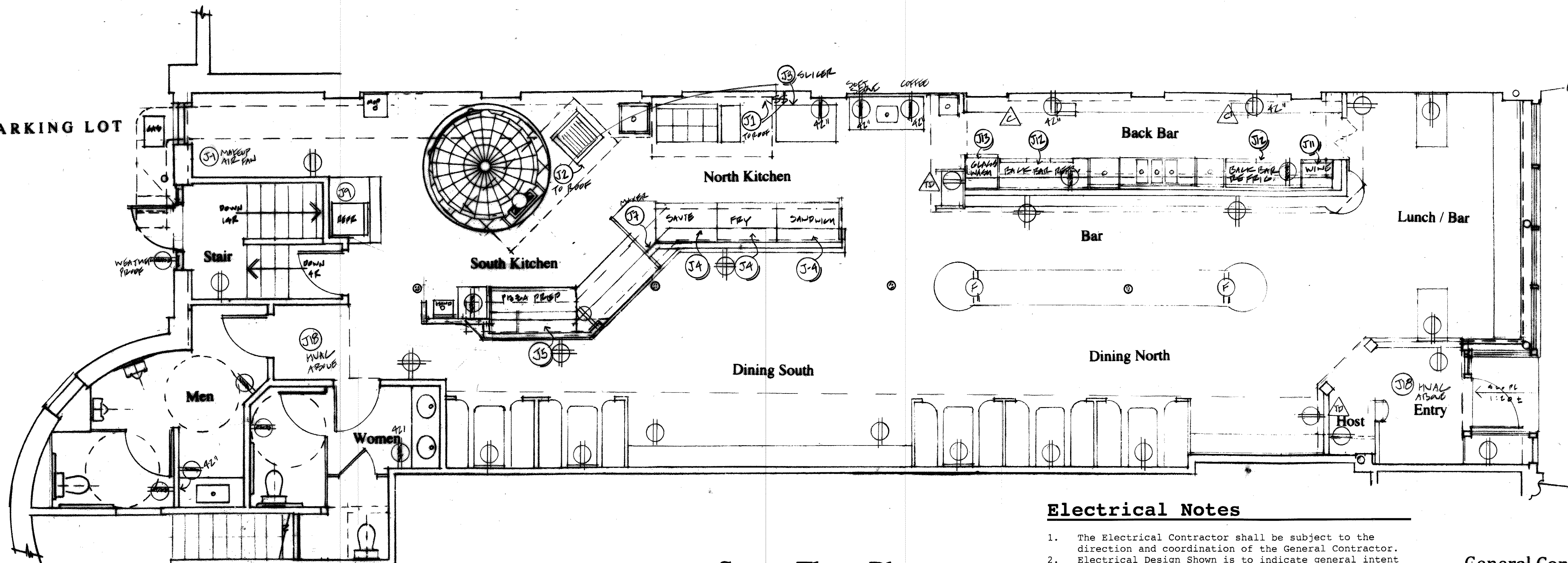


PAVED PARKING LOT



Electrical Legend

- EP Electrical Panel / Sub Panel
- ⊕ Duplex Receptacle @ CL 18" AFF unless indicated
- ⊕ 4 Plex Receptacle @ CL 18" AFF unless indicated
- ⊕ Ground Fault Protected Duplex Receptacle
- ⊕ Floor Receptacle
- ⊕ Junction Box for specific equipment per Schedule
- ⊕ Single Pole Switch @ 48" AFF unless indicated
- ⊕ Dimmer Switch 600W minimum.
- ⊕ 3 Way Switch
- ⊕ Ceiling Mount Fixture
- ⊕ Wall Mount Fixture with height AFF
- ⊕ Exit Light
- ⊕ Emergency Light
- ⊕ Track Light
- ⊕ Telephone/Data Receptacle @ CL 24" AFF
- ⊕ Cable TV/Internet
- ⊕ FA System Horn/Strobe
- ⊕ FA System Pull Station

ELECTRICAL EQUIPMENT SCHEDULE

TAG	ITEM	VOLTS	PHASE	AMPS	REMARKS	TAG	ITEM	VOLTS	PHASE	AMPS	REMARKS
J-1	V-3 FAN (LOAD)	240	SINGLE	17.85	ROOF FAN	J-10	GREASE REMOVER	115	SINGLE	4.5	UNDER PUT SINK
J-2	MAKEUP AIR FAN	240	"	6.82	INTERIOR FAN	J-11	WINE COOLER	120	"	2.0	COUNTER HEIGHT
J-3	V-4 FAN (WOOD)	240	"	17.85	ROOF FAN	J-12	BACK BAR	115	"	7.2	COUNTER HEIGHT
J-4	COUNTERTOP SWICHER 1/2 HP	115	"	11.9	1 BAY COUNTER FLOOR + POSMT. POOR AREA	J-13	BACK BAR REFRIGERATOR	115	"	7.2	COUNTER HEIGHT
J-5	SANDWICH PREP	115	"	15	DEDICATED RECEPTACLES	J-14	GLASS WASHER 1-1/2 KW	115	"	20	COUNTER HEIGHT DEDICATED CIRCUIT
J-6	PIZZA PREP	115	"	15	"	J-15	PROOFING CABINET	120	"	15	NEMA 5-15 PULL DEDICATED CIRCUIT
J-7	FLOOR MIXER	208/240	"	16.8	DEDICATED CIRCUIT VERIFY PULL	J-16	DISH MACHINE	115	"	20	COUNTER HEIGHT DEDICATED CIRCUIT
J-8	COUL TOP MIXER 10 QT.	110/120	"	6.8	DEDICATED CIRCUIT NEMA 5-15 PULL	J-17	BOILER HOT WATER HEATER				LOADS TO BE DETERMINED
J-9	MEAT GRINDER	115	"	1.5	1/2 HP MOTOR	J-18	WALK-IN COOLER	208/240	"	12.6	
J-10	BEACH-IN REFRIGERATOR	115	"	2.4/7.6	1/3 HP UP MOTOR		EVAPORATOR	115	"	7.0	
							HVAC UNITS				ELECTRICAL LOADS TO BE DETERMINED

Street Floor Plan

Electrical Notes

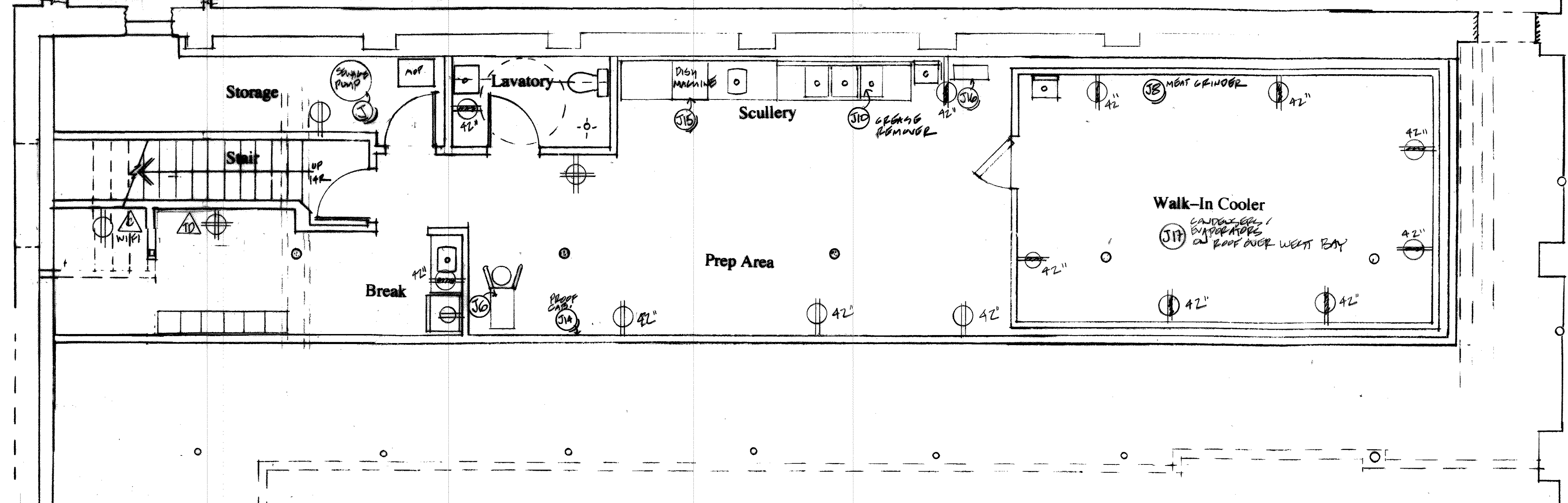
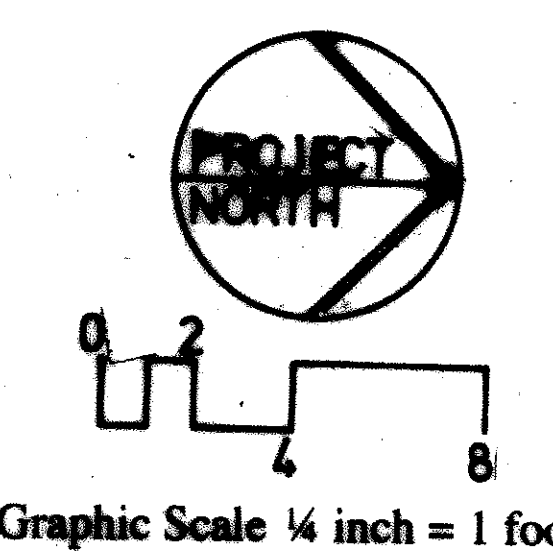
- The Electrical Contractor shall be subject to the direction and coordination of the General Contractor.
- Electrical Design Shown is to indicate general intent with regard to placement of switches, receptacles, and lighting fixtures. It is the responsibility of the Electrical Contractor to install a safe and adequate electrical system which is in conformance in all respects with design requirements of the National Electrical Code as adopted by the state of Maine, and which is acceptable to the Code Enforcement Officer of the City of Portland.
- The Electrical Contractor shall verify the locations of all fixtures and devices with the Architectural Drawings, and shall schedule all required inspections by City of Portland.
- Fire Detection and Alarm System to be designed and installed in accordance with requirements of the City of Portland Fire Department/Fire Prevention Bureau.

General Construction Notes
See Drawing S1.0

NOTE TO THE INSTALLING ELECTRICIAN

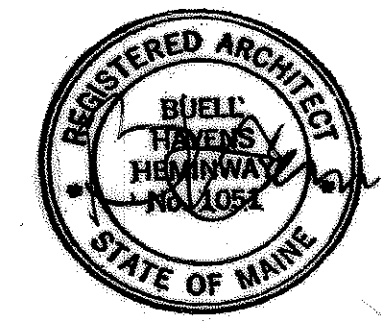
- House plugs, switches and cover plates to be white plastic or as directed.
- Branch wiring shall be No. 12 AWG copper.
- Lavatory, Kitchen, Bar and Scullery receptacles and fixtures shall be GFI protected.
- Switches and Receptacles to be 20 amp.

Note:
De-energize existing circuits from elsewhere in the building entering the Leased Space. Terminate in junction boxes outside the Leased Space.



Basement Floor Plan

© Copyright Buell Heminway Architects, P.A. 2015
All rights reserved. The drawings, designs, and ideas embodied in this document are the property of Buell Heminway Architects, P.A. and shall not be copied, reproduced, disclosed to others, or used in connection with any work other than the specific project for which they have been prepared, in whole or in part, without prior written authorization by Buell Heminway Architects, P.A..



618 Congress Street
Portland, Maine
Restaurant
for
Lazzari LLC
Buell Heminway
ARCHITECTS
PO Box 17733 DTS - Portland, Me 04112
(207) 772-8892 - FAX 772-2870
bheminway@gwi.net

Drawing Number and Title
E-1
Electrical
Equipment + Receptacles
Plans, Schedules, Notes

Date: June 30, 2015
Scale: 3/4"=1'-0"
By: Buell