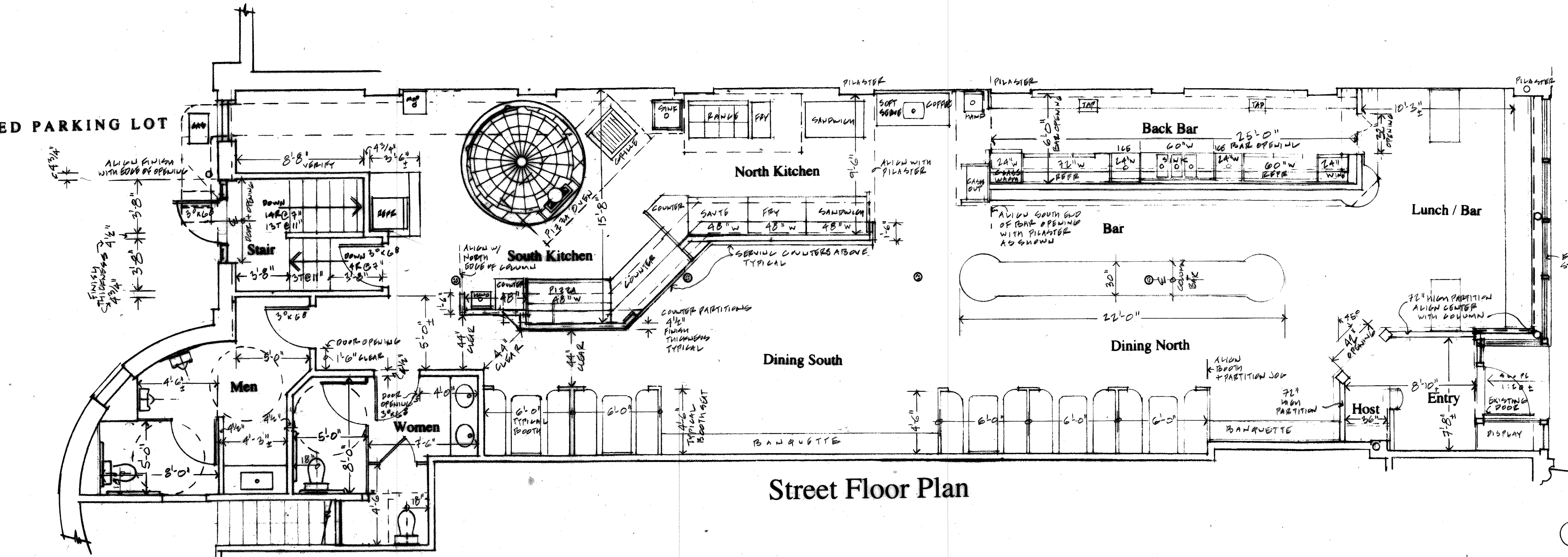
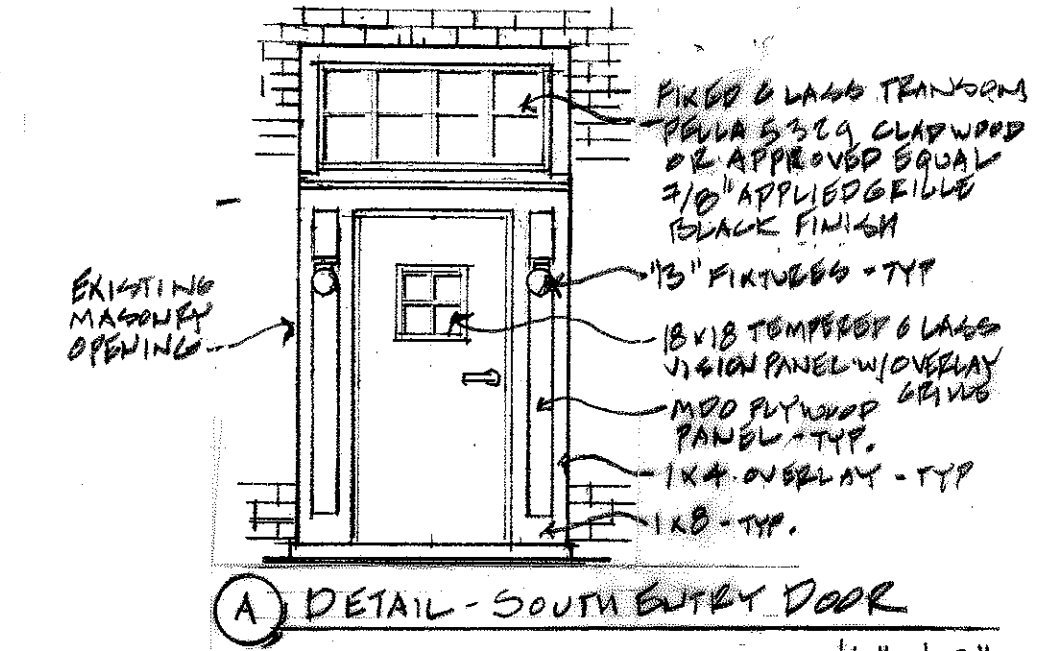


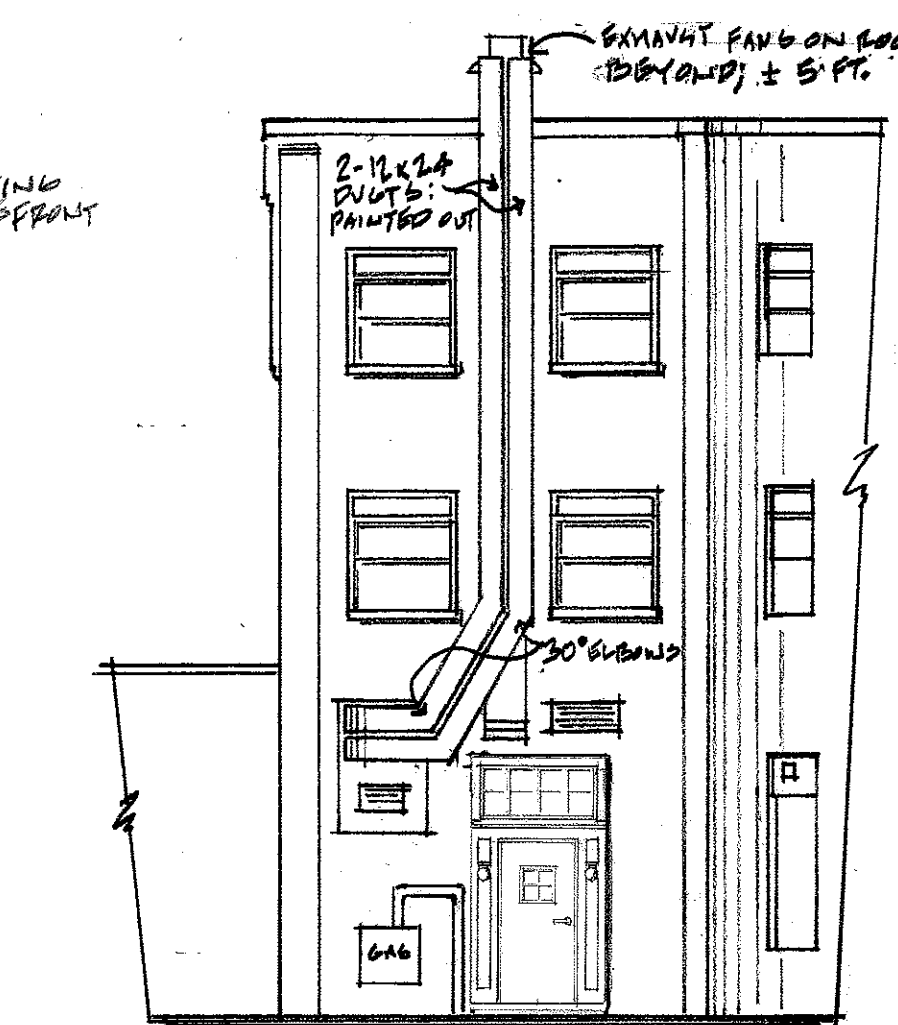
PAVED PARKING LOT



Street Floor Plan



A DETAIL - SOUTH ENTRY DOOR  
1/4" = 1'-0"



1 PART SOUTH ELEVATION - KITCHEN VENTING  
SEE DETAIL A ABOVE  
1/8" = 1'-0"

DEMOLITION PLAN KEY

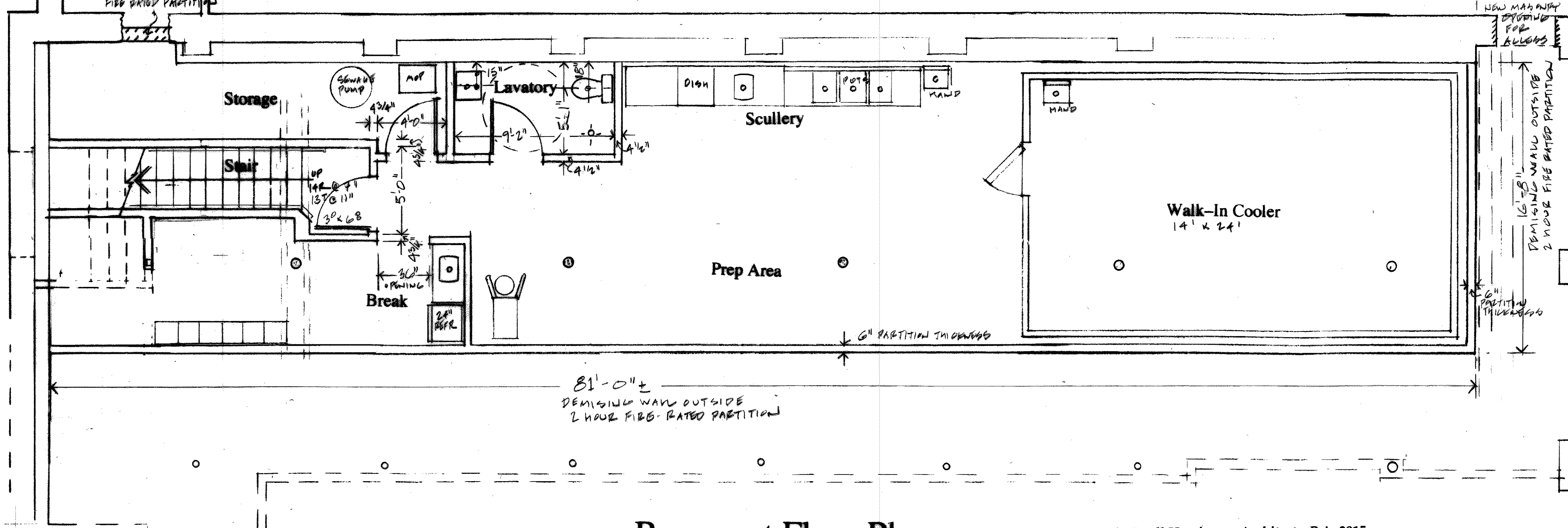
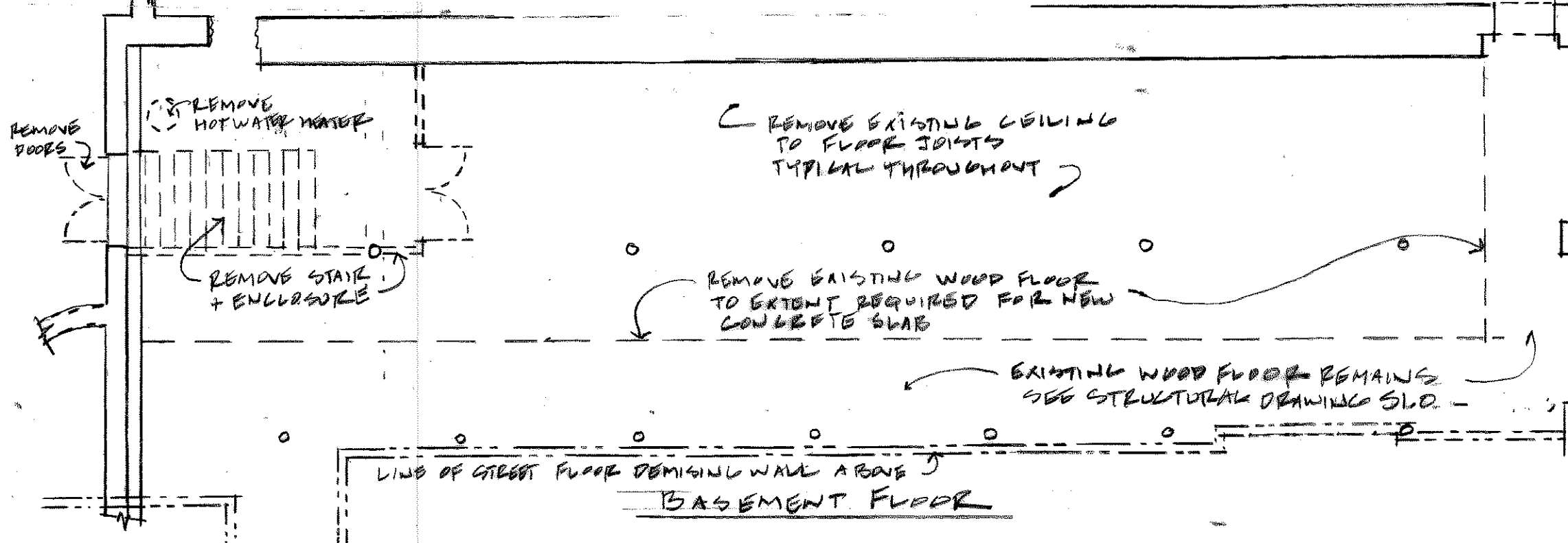
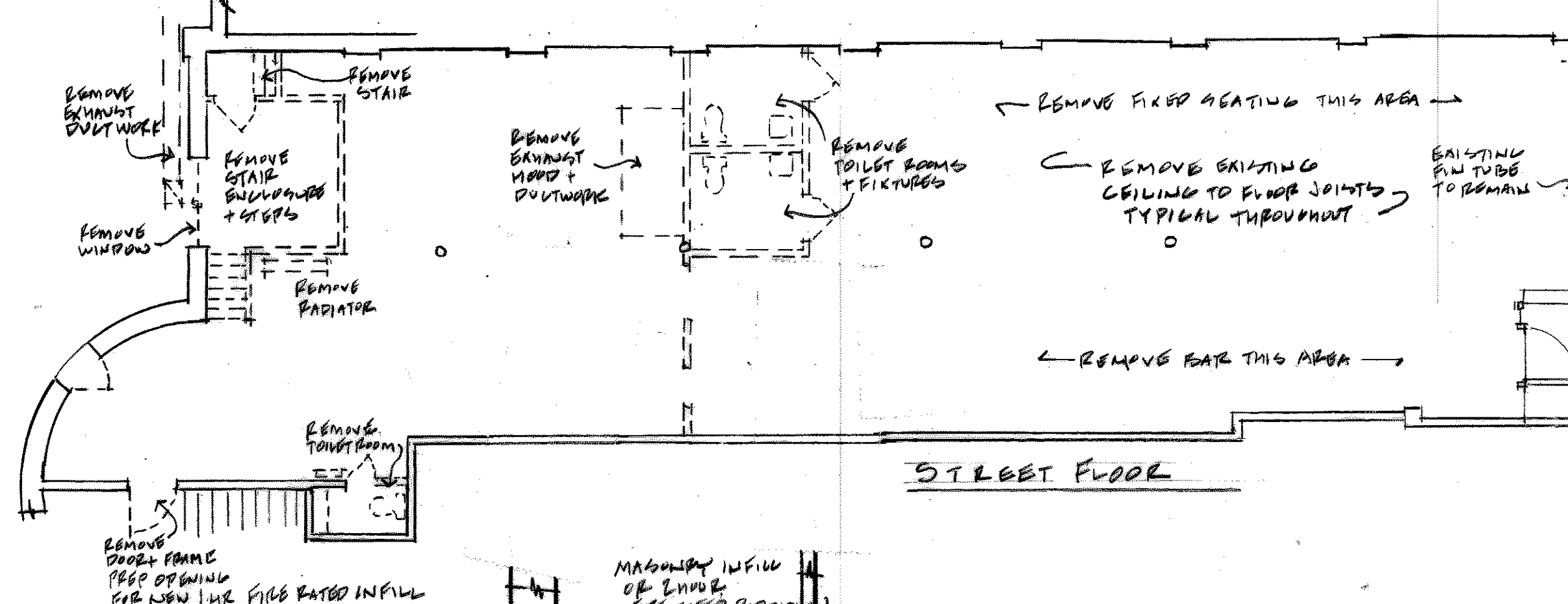
- = EXISTING TO REMAIN
- = TO BE REMOVED
- = LINE OF STREET FLOOR REMAINING WALL

DIMENSIONS KEY

- = FACE OF FRAMING
- = TO A CENTERLINE
- = FINISHED SURFACE - CLEAR
- = FINISHED WALL THICKNESS



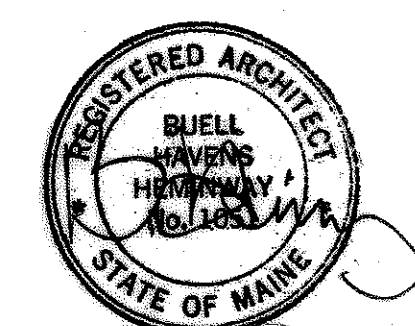
Graphic Scale 1/4 inch = 1 foot



Basement Floor Plan

© Copyright Buell Heminway Architects, P.A. 2015  
All rights reserved. The drawings, designs, and ideas embodied in this document are the property of Buell Heminway Architects, P.A. and shall not be copied, reproduced, disclosed to others, or used in connection with any work other than the specific project for which they have been prepared, in whole or in part, without prior written authorization by Buell Heminway Architects, P.A.

General Construction Notes  
See Drawing S1.0



618 Congress Street  
Portland, Maine  
Restaurant  
for  
Lazzari LLC  
  
Buell Heminway  
ARCHITECTS  
PO Box 17733 DTS - Portland, ME 04112  
(207) 772-8892 - FAX 772-2870  
bheminway@gwi.net

Drawing Number and Title  
**A-3**  
Dimension Plans  
Demolition Plans  
Part South Elevation  
+ Detail

Date: June 30, 2015  
Scale: 1/4" = 1'-0" + shown  
By: Buell