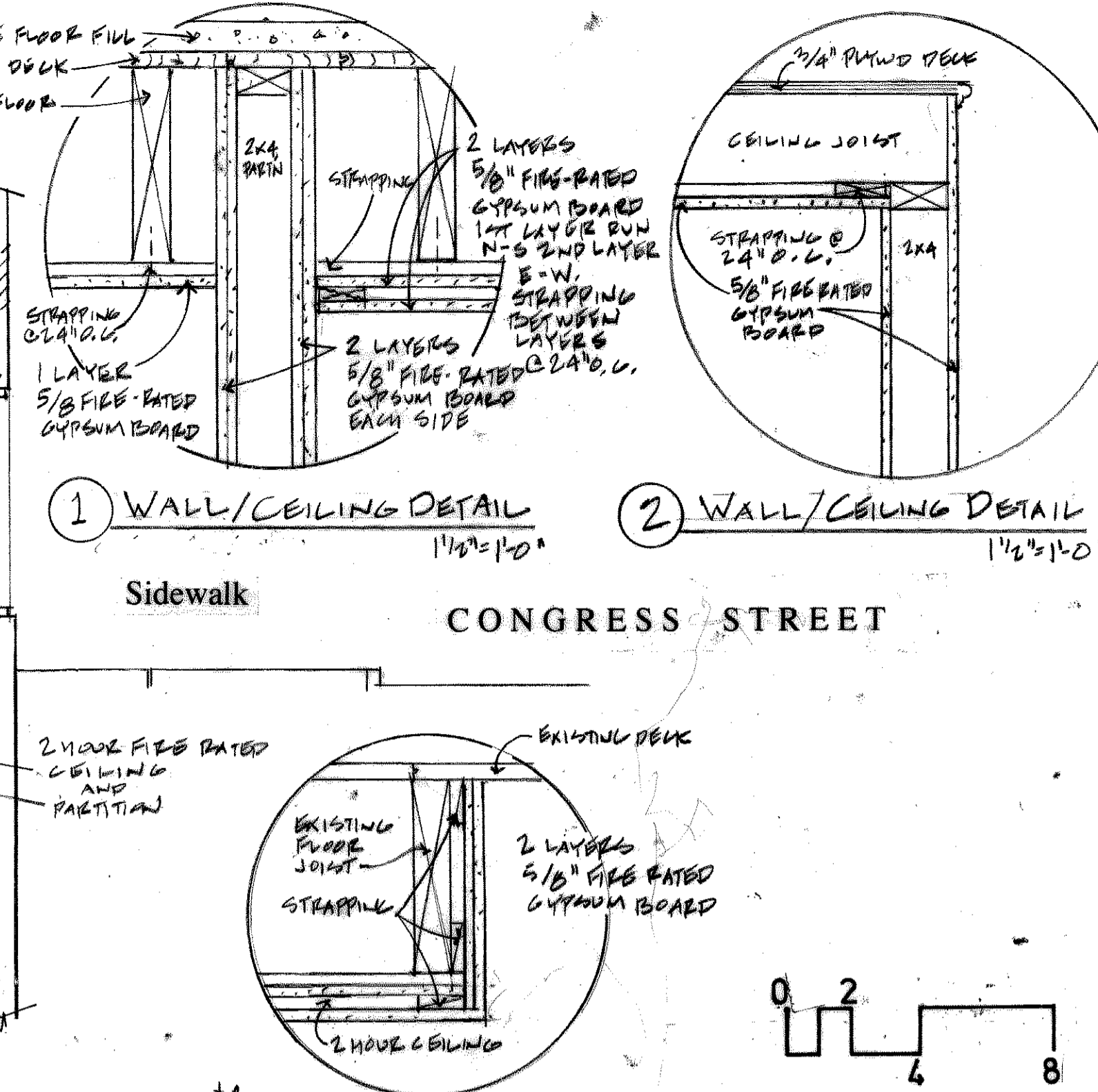


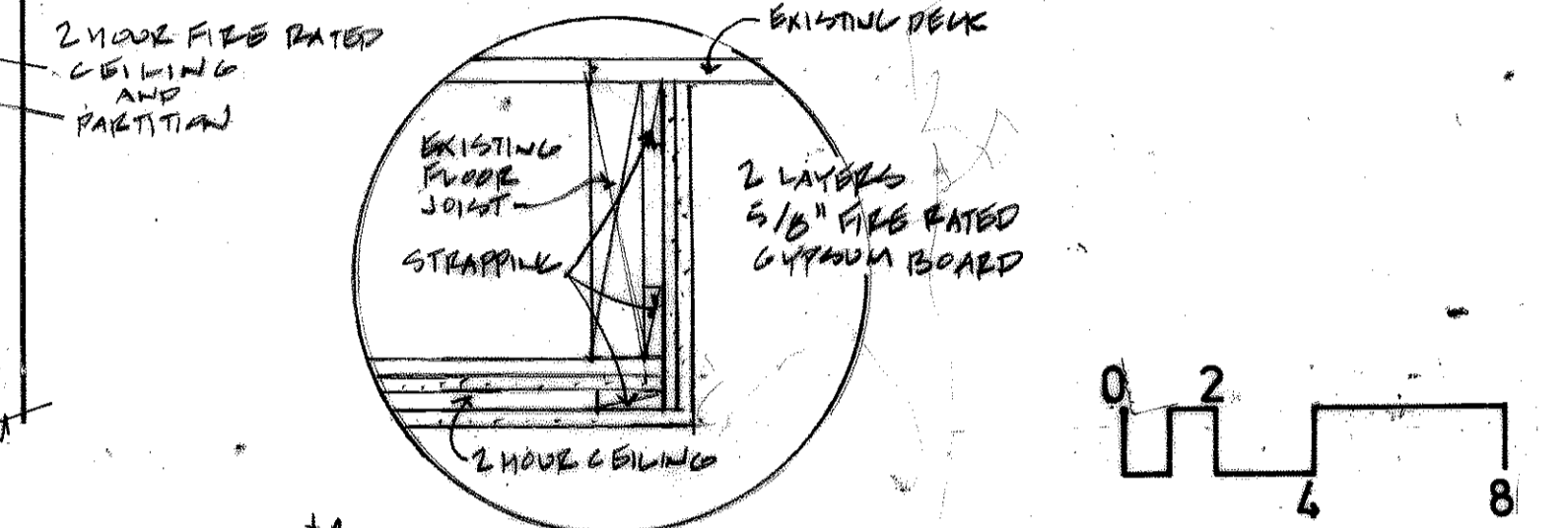
(A) Building Section looking West



1 WALL/CEILING DETAIL 1 1/2" = 1'-0"

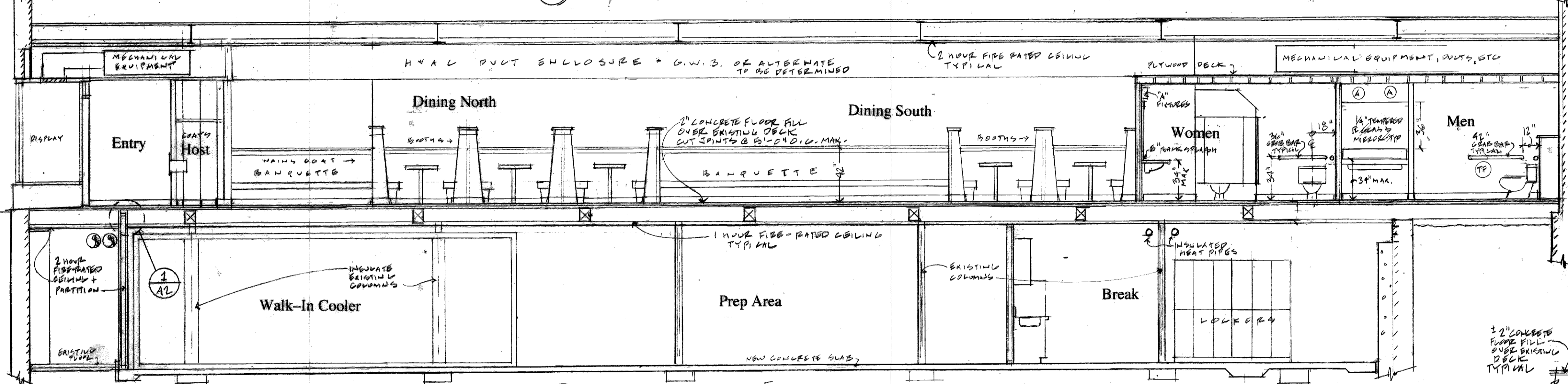
2 WALL/CEILING DETAIL 1 1/2" = 1'-0"

Sidewalk CONGRESS STREET

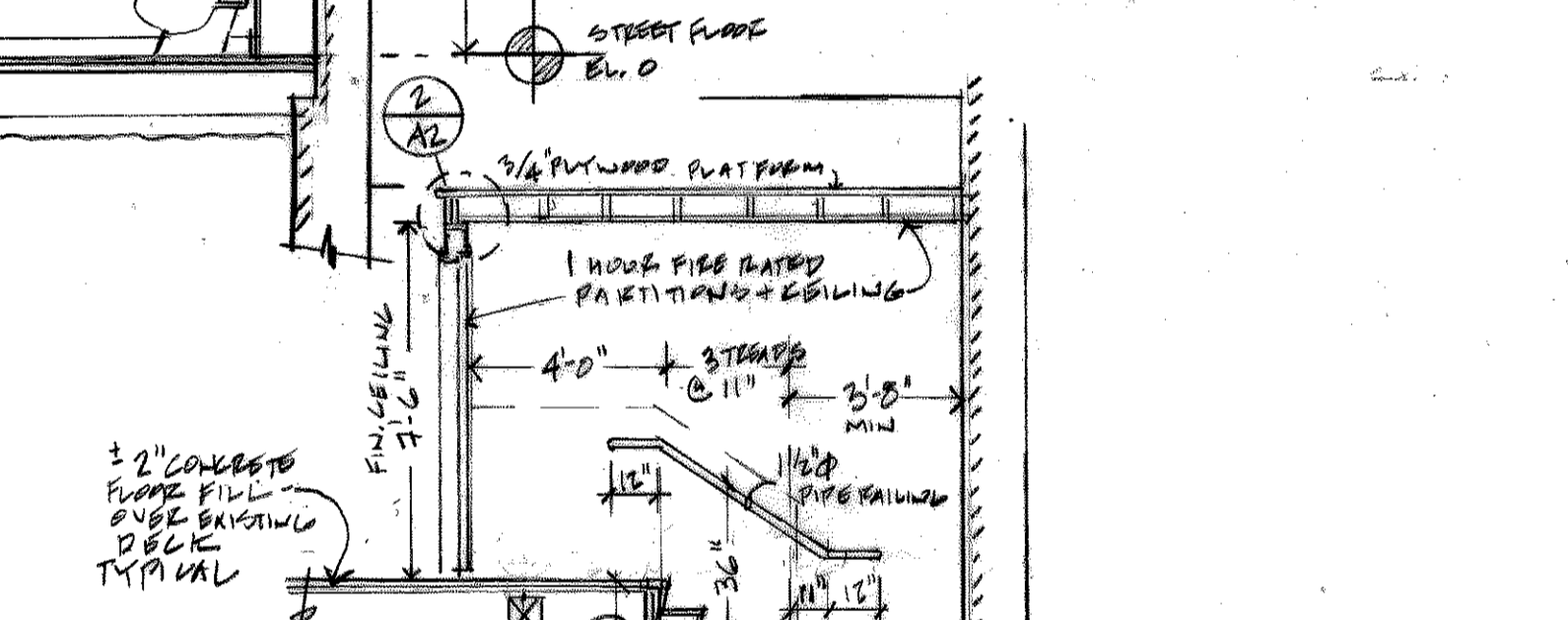


3 CEILING TERMINATION DETAIL 1 1/2" = 1'-0"

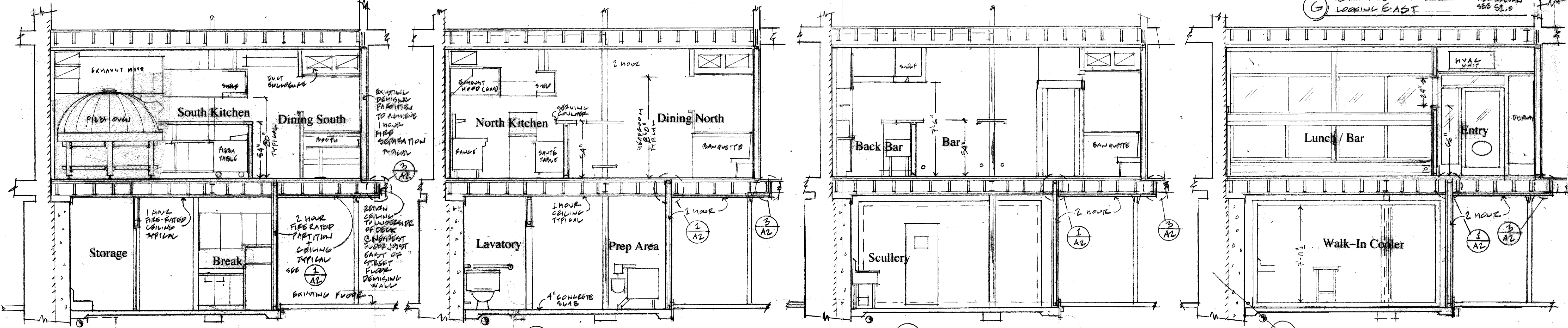
General Construction Notes See Drawing S1.0



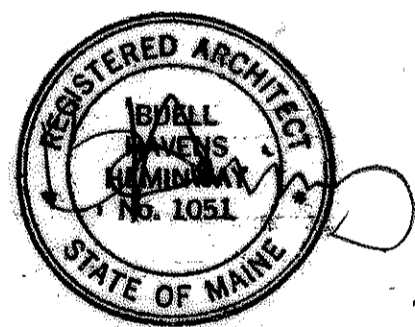
(B) Building Section looking East



G STAIR ENCLOSURE LOOKING EAST



Building Sections looking North



618 Congress Street
Portland, Maine
Restaurant
for
Lazzari LLC

Buell Heminway
ARCHITECTS
PO Box 17733 DTS - Portland, Me 04112
(207) 772-8892 - FAX 772-2870
bheminway@gwi.net

Drawing Number and Title

A-2
Building Sections
Wall + Ceiling Details

Date: June 30, 2015
Scale: 1/4" = 1'-0" + shown
By: Buell

© Copyright Buell Heminway Architects, P.A. 2015
All rights reserved. The drawings, designs, and ideas embodied in this document are the property of Buell Heminway Architects, P.A. and shall not be copied, reproduced, disclosed to others, or used in connection with any work other than the specific project for which they have been prepared, in whole or in part, without prior written authorization by Buell Heminway Architects, P.A..