

© 2016 RYAN SENATORE ARCHITECTURE

OFFICE FIT-UP  
622 CONGRESS STREET  
PORTLAND, MAINE



RYAN SENATORE  
ARCHITECTURE  
565 CONGRESS STREET  
PORTLAND, MAINE 04101  
207-650-6414  
senatorearchitecture.com

CONSULTANTS:

REVISIONS:

DATE: OCTOBER 31, 2016

PROJECT No. 1625

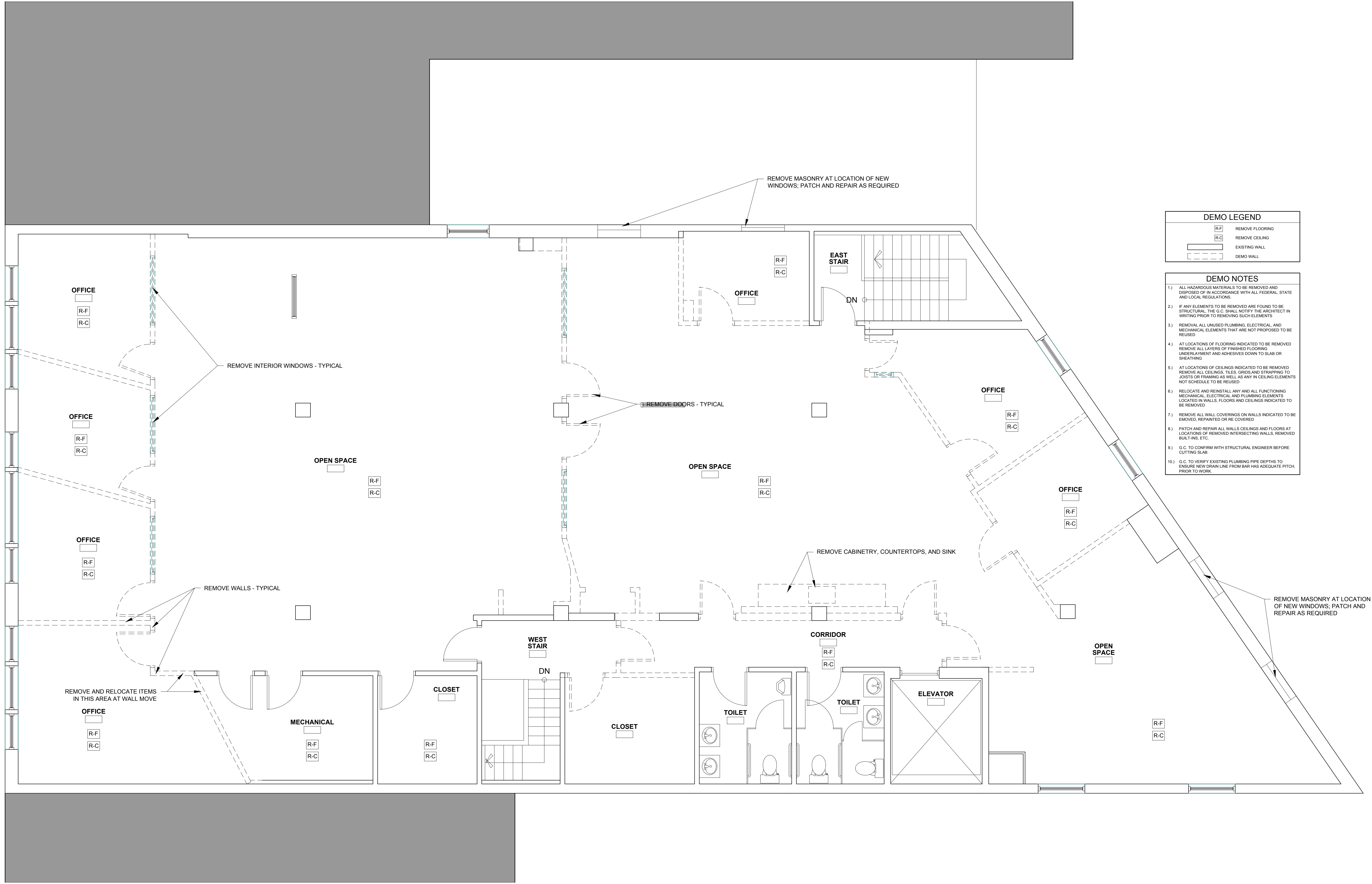
DRAWN BY: JPF, RJS

CHECKED BY: RJS

SCALE: AS NOTED

SHEET TITLE:  
THIRD FLOOR  
DEMOLITION  
PLAN

AD1-2



DEMO LEGEND	
[R-F]	REMOVE FLOORING
[R-C]	REMOVE CEILING
[ ]	EXISTING WALL
[---]	DEMO WALL

- DEMO NOTES**
- 1) ALL HAZARDOUS MATERIALS TO BE REMOVED AND DISPOSED OF IN ACCORDANCE WITH ALL FEDERAL, STATE AND LOCAL REGULATIONS.
  - 2) IF ANY ELEMENTS TO BE REMOVED ARE FOUND TO BE STRUCTURAL, THE G.C. SHALL NOTIFY THE ARCHITECT IN WRITING PRIOR TO REMOVING SUCH ELEMENTS.
  - 3) REMOVE ALL UNUSED PLUMBING, ELECTRICAL, AND MECHANICAL ELEMENTS THAT ARE NOT PROPOSED TO BE REUSED.
  - 4) AT LOCATIONS OF FLOORING INDICATED TO BE REMOVED REMOVE ALL LAYERS OF FINISHED FLOORING UNDERLAYMENT AND ADHESIVES DOWN TO SLAB OR SHEATHING.
  - 5) AT LOCATIONS OF CEILINGS INDICATED TO BE REMOVED REMOVE ALL CEILINGS, TILES, GRIDS, AND STRAPPING TO JOISTS OR FRAMING AS WELL AS ANY IN CEILING ELEMENTS NOT SCHEDULED TO BE REUSED.
  - 6) RELOCATE AND REINSTALL ANY AND ALL FUNCTIONING MECHANICAL, ELECTRICAL, AND PLUMBING ELEMENTS LOCATED IN WALLS, FLOORS AND CEILINGS INDICATED TO BE REMOVED.
  - 7) REMOVE ALL WALL COVERINGS ON WALLS INDICATED TO BE REMOVED, REPAINTED OR BE COVERED.
  - 8) PATCH AND REPAIR ALL WALLS, CEILINGS AND FLOORS AT LOCATIONS OF REMOVED INTERSECTING WALLS, REMOVED BUILT-INS, ETC.
  - 9) G.C. TO CONFIRM WITH STRUCTURAL ENGINEER BEFORE CUTTING SLAB.
  - 10) G.C. TO VERIFY EXISTING PLUMBING PIPE DEPTHS TO ENSURE NEW DRAIN LINE FROM BAR HAS ADEQUATE PITCH, PRIOR TO WORK.

1 THIRD FLOOR DEMOLITION PLAN  
1/4" = 1'-0"