

© 2016 RYAN SENATORE ARCHITECTURE

OFFICE FIT-UP
622 CONGRESS STREET
PORTLAND, MAINE



RYAN SENATORE ARCHITECTURE
565 CONGRESS STREET
PORTLAND, MAINE 04101
207-650-6414
senatorearchitecture.com

CONSULTANTS:

REVISIONS:

DATE: OCTOBER 31, 2016

PROJECT No. 1625

DRAWN BY: JPF, RJS

CHECKED BY: RJS

SCALE: AS NOTED

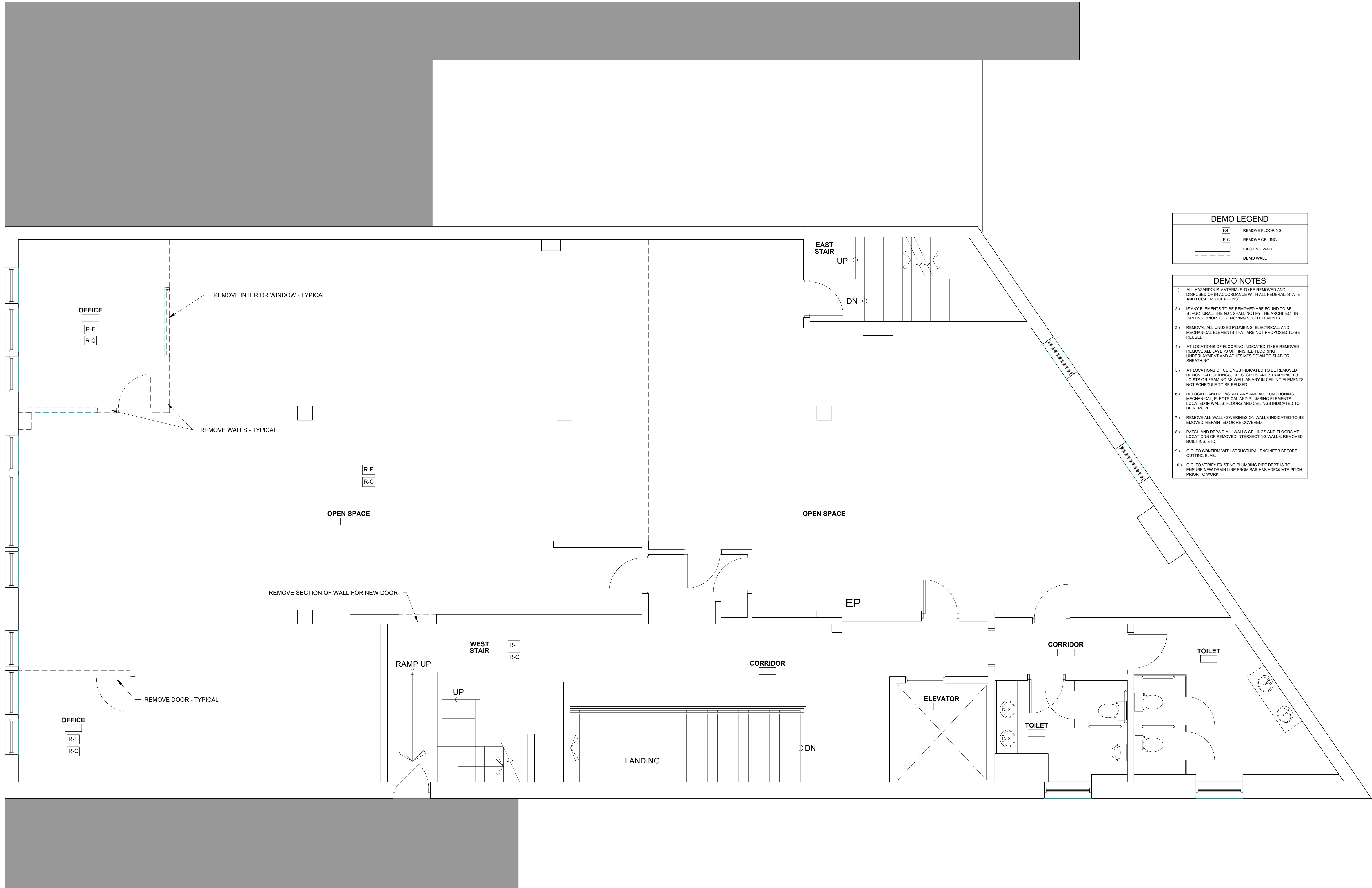
SHEET TITLE:

SECOND FLOOR DEMOLITION PLAN

AD1-1

DEMO LEGEND	
[R-F]	REMOVE FLOORING
[R-C]	REMOVE CEILING
[Solid Line]	EXISTING WALL
[Dashed Line]	DEMO WALL

- DEMO NOTES**
- 1) ALL HAZARDOUS MATERIALS TO BE REMOVED AND DISPOSED OF IN ACCORDANCE WITH ALL FEDERAL, STATE AND LOCAL REGULATIONS.
 - 2) IF ANY ELEMENTS TO BE REMOVED ARE FOUND TO BE STRUCTURAL, THE G.C. SHALL NOTIFY THE ARCHITECT IN WRITING PRIOR TO REMOVING SUCH ELEMENTS.
 - 3) REMOVAL ALL UNUSED PLUMBING, ELECTRICAL, AND MECHANICAL ELEMENTS THAT ARE NOT PROPOSED TO BE REUSED.
 - 4) AT LOCATIONS OF FLOORING INDICATED TO BE REMOVED REMOVE ALL LAYERS OF FINISHED FLOORING UNDERLAYMENT AND ADHESIVES DOWN TO SLAB OR SHEATHING.
 - 5) AT LOCATIONS OF CEILINGS INDICATED TO BE REMOVED REMOVE ALL CEILING, TILES, CRISSES AND STRAPPING TO JOISTS OR FRAMING AS WELL AS ANY IN CEILING ELEMENTS NOT SCHEDULED TO BE REUSED.
 - 6) RELOCATE AND REINSTALL ANY AND ALL FUNCTIONING MECHANICAL, ELECTRICAL AND PLUMBING ELEMENTS LOCATED IN WALLS, FLOORS AND CEILINGS INDICATED TO BE REMOVED.
 - 7) REMOVE ALL WALL COVERINGS ON WALLS INDICATED TO BE REMOVED, REPAINTED OR RE COVERED.
 - 8) PATCH AND REPAIR ALL WALLS CEILINGS AND FLOORS AT LOCATIONS OF REMOVED INTERSECTING WALLS, REMOVED BUILDING, ETC.
 - 9) G.C. TO CONFIRM WITH STRUCTURAL ENGINEER BEFORE CUTTING SLAB.
 - 10) G.C. TO VERIFY EXISTING PLUMBING PIPE DEPTHS TO ENSURE NEW DRAIN LINE FROM BAR HAS ADEQUATE PITCH, PRIOR TO WORK.



1 SECOND FLOOR DEMOLITION PLAN
1/4" = 1'-0"