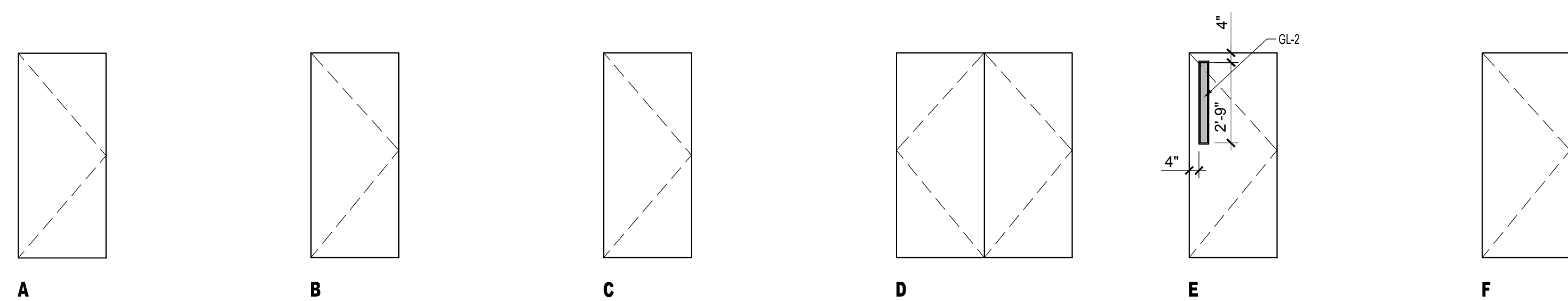
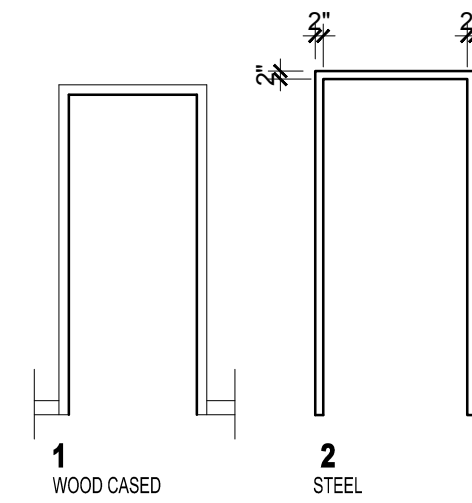


DOOR SCHEDULE



1 DOOR TYPES
1/4" = 1'-0"

FRAME TYPES

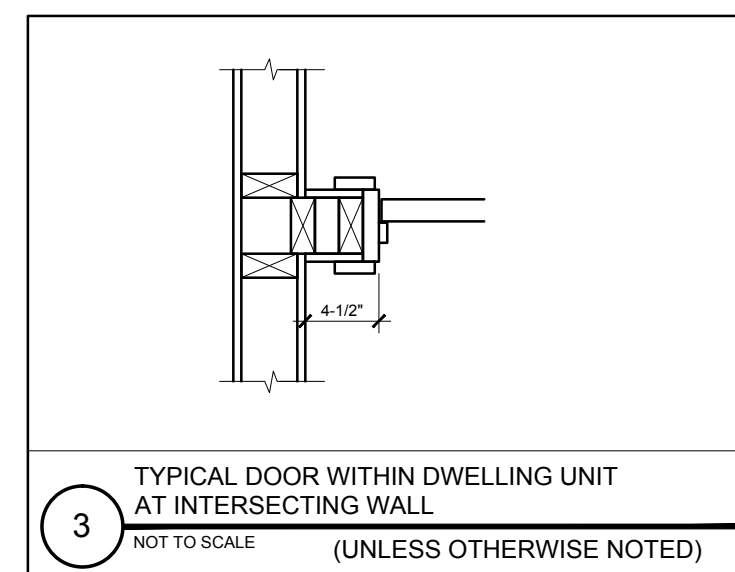
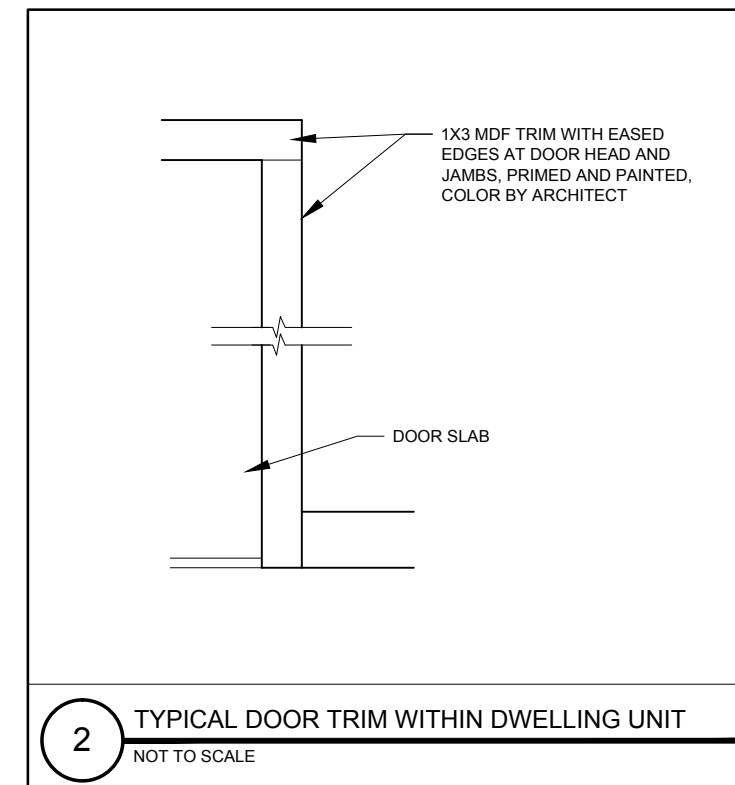


- NOTES:
 1. EXTERIOR DOOR JAMBS TO BE SEALED TO THEIR ROUGH OPENINGS USING LOW EXPANDING FOAM, BACKER ROD OR CAULKING.
 2. ALL EXTERIOR DOORS TO BE WEATHER STRIPPED
 3. ALL INTERIOR DOORS TO BE SOLID CORE

GLAZING SCHEDULE

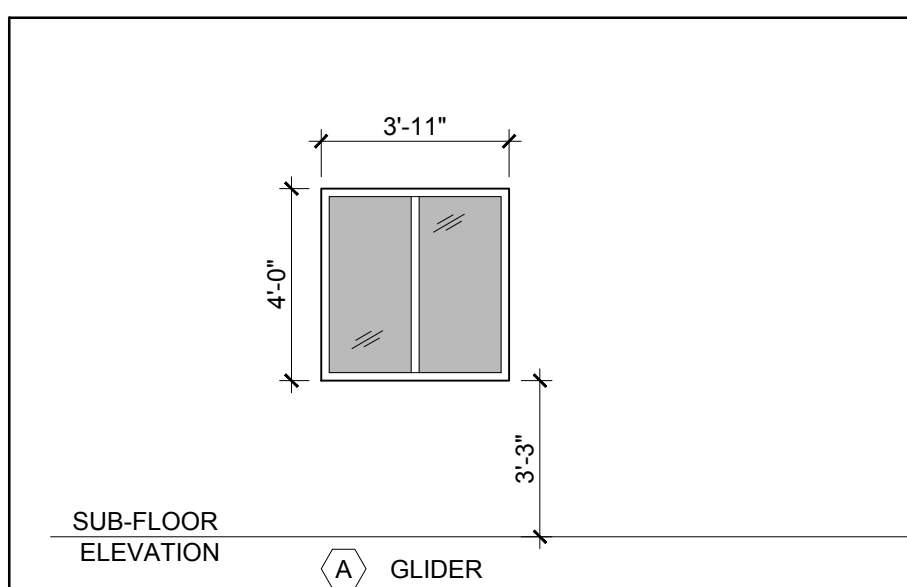
KEY	GLAZING TYPE
GL-1	INSULATED CLEAR TEMPERED GLAZING
GL-2	FIRE RATED INSULATED GLAZING
GL-3	CLEAR TEMPERED GLASS
GL-4	CLEAR INSULATED TEMPERED GLASS
GL-5	FIRE RATED GLAZING

DOOR SCHEDULE																	
DOOR NO.	TYPE	DOOR			FRAME				GENERAL								
		WIDTH	HEIGHT	THICKNESS	MATERIAL	FINISH	INSULATED	TYPE	MATERIAL	THRESHOLD	DETAILS	CLOSER	ESC (MIN)	ESC (MAX)			
100.1	E	3'-0"	7'-0"	1-3/4"	STL	PTD	Y	2	STL	AL	-	-	-	Y	60	-	PANIC HARDWARE, MAGNETIC HOLD OPEN TIED TO FIRE ALARM
100.2	E	3'-0"	7'-0"	1-3/4"	STL	PTD	Y	2	STL	AL	-	-	-	Y	60	-	PANIC HARDWARE, MAGNETIC HOLD OPEN TIED TO FIRE ALARM
100.3	E	3'-0"	7'-0"	1-3/4"	STL	PTD	Y	2	STL	AL	-	-	-	Y	60	-	REPLACE EXISTING DOOR WITH 60 MINUTE FIRERATED DOOR
201.1	F	3'-0"	7'-0"	1-3/4"	STL	PTD	Y	2	STL	AL	-	-	-	Y	60	-	
202.1	C	3'-0"	6'-8"	1-3/4"	WD	PTD	N	2	STL	-	-	-	-	-	-	-	
203.1	C	3'-0"	6'-8"	1-3/4"	WD	PTD	N	2	STL	-	-	-	-	-	-	-	
205.1	D	6'-0"	6'-8"	1-3/4"	WD	PTD	N	2	STL	-	-	-	-	-	-	-	PAIR OF DOORS
230.1	E	3'-0"	7'-0"	1-3/4"	STL	PTD	Y	2	STL	AL	-	-	-	Y	60	-	PANIC HARDWARE
301.1	EX	-	-	-	-	-	-	-	-	-	-	-	-	-	-	-	REPLACE IF OWNER ADVISES
302.1	EX	-	-	-	-	-	-	-	-	-	-	-	-	-	-	-	REPLACE IF OWNER ADVISES
303.1	EX	-	-	-	-	-	-	-	-	-	-	-	-	-	-	-	REPLACE IF OWNER ADVISES
304.1	EX	-	-	-	-	-	-	-	-	-	-	-	-	-	-	-	REPLACE IF OWNER ADVISES
305.1	C	3'-0"	6'-8"	1-3/4"	WD	PTD	N	2	STL	-	-	-	-	-	-	-	
305.2	B	3'-0"	6'-8"	1-3/4"	WD	PTD	N	2	STL	-	-	-	-	-	-	-	
306.1	B	3'-0"	6'-8"	1-3/4"	WD	PTD	N	2	STL	-	-	-	-	-	-	-	
307.1	A	3'-0"	6'-8"	1-3/4"	WD	PTD	N	2	STL	-	-	-	-	-	-	-	
309.1	A	3'-0"	6'-8"	1-3/4"	WD	PTD	N	2	STL	-	-	-	-	-	-	-	
310.1	A	3'-0"	6'-8"	1-3/4"	WD	PTD	N	2	STL	-	-	-	-	-	-	-	
311.1	C	6'-8"	6'-8"	1-3/4"	WD	PTD	N	2	STL	-	-	-	-	-	-	-	
312.1	B	3'-0"	6'-8"	1-3/4"	WD	PTD	N	2	STL	-	-	-	-	-	-	-	
313.1	C	3'-0"	6'-8"	1-3/4"	WD	PTD	N	2	STL	-	-	-	-	-	-	-	
315.1	B	3'-0"	6'-8"	1-3/4"	WD	PTD	N	2	STL	-	-	-	-	-	-	-	
316.1	B	3'-0"	6'-8"	1-3/4"	WD	PTD	N	2	STL	-	-	-	-	-	-	-	
318.1	B	3'-0"	6'-8"	1-3/4"	WD	PTD	N	2	STL	-	-	-	-	-	-	-	
319.1	C	3'-0"	6'-8"	1-3/4"	WD	PTD	N	2	STL	-	-	-	-	-	-	-	
320.1	B	3'-0"	6'-8"	1-3/4"	WD	PTD	N	2	STL	-	-	-	-	-	-	-	
322.1	EX	-	-	-	-	-	-	-	-	-	-	-	-	-	-	-	
323.1	EX	-	-	-	-	-	-	-	-	-	-	-	-	-	-	-	
330.1	E	3'-0"	7'-0"	1-3/4"	STL	PTD	Y	2	STL	AL	-	-	-	Y	60	-	
340.1	EX	-	-	-	-	-	-	-	-	-	-	-	-	-	-	-	



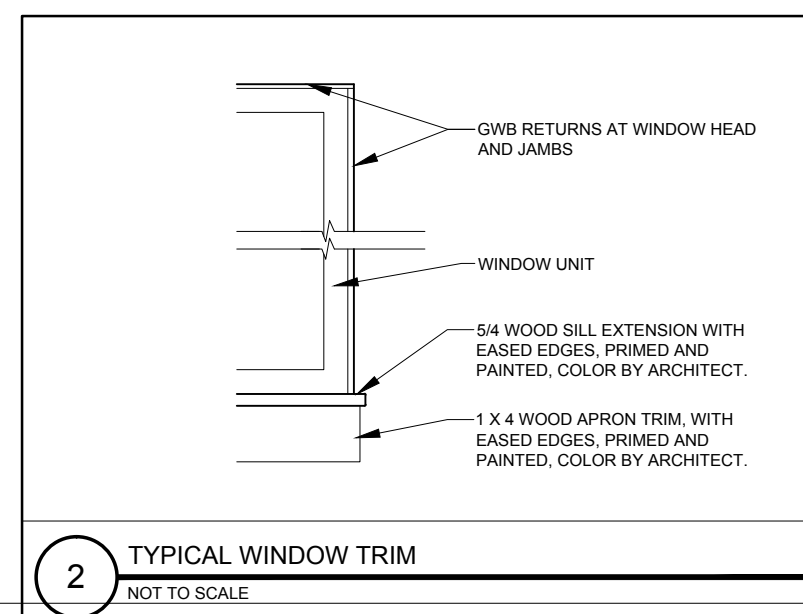
- DOOR NOTES:
- 1.) ALL EXTERIOR GLAZING TO BE LOW-E ARGON FILLED INSULATED GLAZING UNITS
 - 2.) FRAME ALL OPENINGS WITH ELEVATIONS
 - 3.) SEAL EXTERIOR DOORS TO ROUGH OPENING WITH LOW EXPANDING FOAM INSULATION - SEE DETAILS
 - 4.) ALL DOOR HARDWARE TO BE LEVER TYPE
 - 5.) ALL EXTERIOR DOORS TO BE WEATHERSTRIPPED

WINDOW SCHEDULE



1 WINDOW TYPES
1/4" = 1'-0"

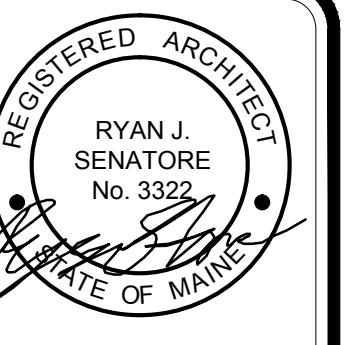
WINDOW SCHEDULE													
KEY	ACTION	ROUGH OPENING (WH) VIF	MATCH EXISTING	R/O HEAD	R/O JAMB	R/O SILL	DETAILS			MATERIAL	FINISH	REMARKS	
							HEAD	JAMB	SILL				
A	GL	MATCH EXISTING	-	-	-	-	-	-	-	AL	PTD	4" SASH LIMITERS	



WINDOW SCHEDULE LEGEND

- T = TEMPERED GLASS
- FG = FIBERGLASS
- AL = ALUMINUM
- DH = DOUBLE HUNG
- AW = AWNING
- LV = LOUVER
- F = FIXED
- GL = GLIDER

- WINDOW NOTES:
- 1.) COORDINATE AND ADJUST ROUGH OPENING DIMENSIONS TO ACCOMMODATE SILL PAN FLASHING SYSTEM
 - 2.) ALL WINDOW UNITS AND MULTI-WINDOW UNIT COMBINATIONS TO MEET OR EXCEED DP-50 RATINGS FOR BOTH STRUCTURAL AND WATER
 - 3.) PROVIDE MULL REINFORCING AT ALL MULTI-UNIT WINDOWS AS REQUIRED TO ACHIEVE DP-50 RATINGS, WITH INSTALLATION BRACKETS
 - 3.) FULL SCREENS ALL OPENINGS
 - 4.) CONTRACTOR TO VERIFY THAT ALL EGRESS OPENINGS MEET EGRESS REQUIREMENTS
 - 5.) ALL GLAZING LOCATED WITHIN 18" OF FINISHED FLOOR TO BE TEMPERED GLASS
 - 6.) ALL EXTERIOR GLAZING TO BE INSULATED
 - 7.) FRAME ALL OPENINGS WITH ELEVATIONS
 - 8.) SEAL WINDOW TO ROUGH OPENING WITH LOW EXPANDING FOAMINSULATION - SEE DETAILS



© 2016 RYAN SENATORE ARCHITECTURE

OFFICE FIT-UP
 622 CONGRESS STREET
 PORTLAND, MAINE



CONSULTANTS:

REVISIONS:

DATE: OCTOBER 31, 2016

PROJECT No. 1625

DRAWN BY: JPF, RJS

CHECKED BY: RJS

SCALE: AS NOTED

SHEET TITLE:

DOOR SCHEDULE

A7-0