

© 2016 RYAN SENATORE ARCHITECTURE

OFFICE FIT-UP  
622 CONGRESS STREET  
PORTLAND, MAINE



RYAN SENATORE  
ARCHITECTURE  
665 CONGRESS STREET  
PORTLAND, MAINE 04101  
207-650-6414  
senatorearchitecture.com

CONSULTANTS:

REVISIONS:

DATE: OCTOBER 31, 2016

PROJECT No. 1625

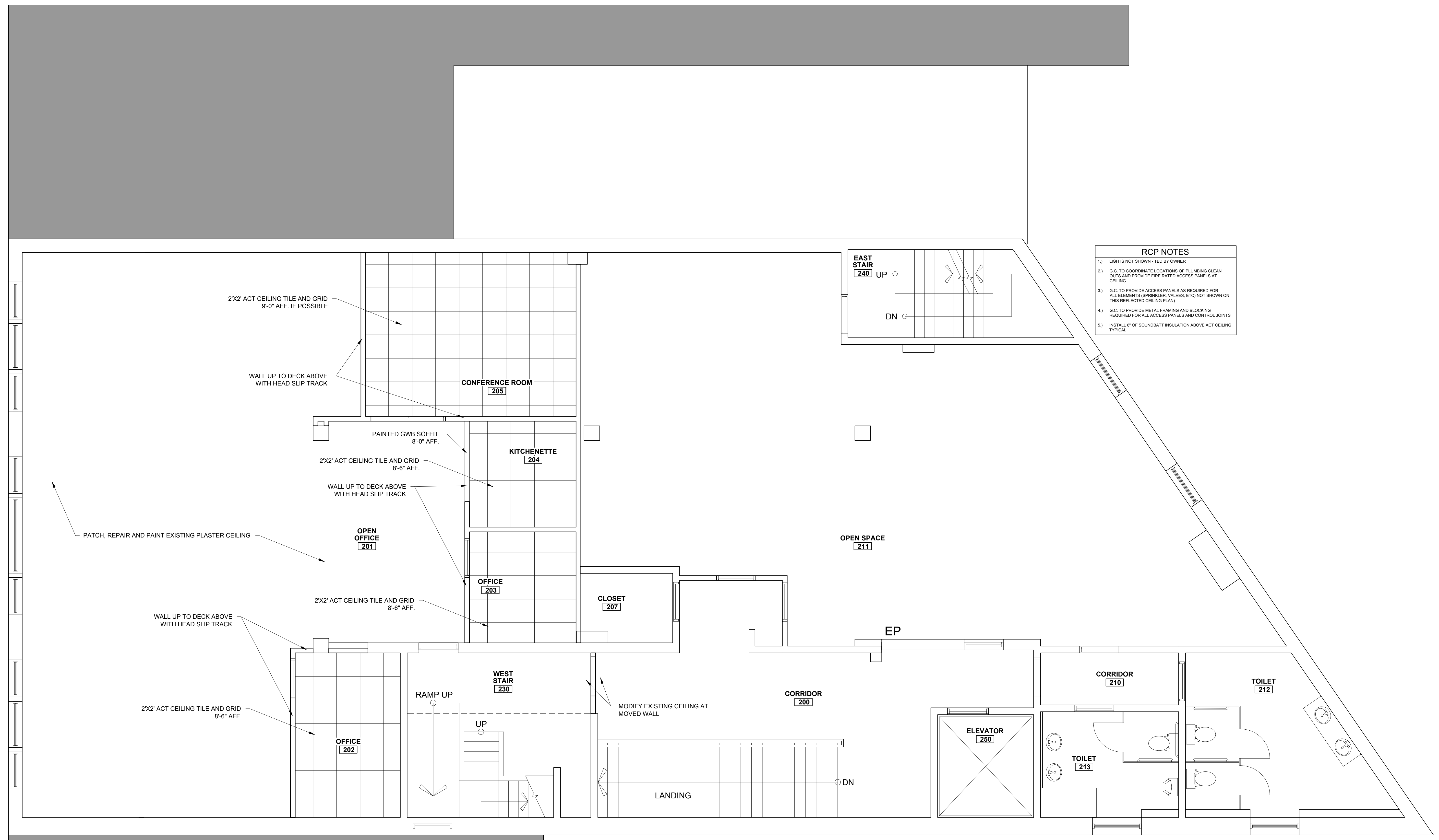
DRAWN BY: JPF, RJS

CHECKED BY: RJS

SCALE: AS NOTED

SHEET TITLE:  
SECOND FLOOR  
RCP

A1-4



- RCP NOTES**
- 1) LIGHTS NOT SHOWN - TBD BY OWNER
  - 2) G.C. TO COORDINATE LOCATIONS OF PLUMBING CLEAN OUTS AND PROVIDE FIRE RATED ACCESS PANELS AT CEILING
  - 3) G.C. TO PROVIDE ACCESS PANELS AS REQUIRED FOR ALL ELEMENTS (SPRINKLER, VALVES, ETC) NOT SHOWN ON THIS REFLECTED CEILING PLAN
  - 4) G.C. TO PROVIDE METAL FRAMING AND BLOCKING REQUIRED FOR ALL ACCESS PANELS AND CONTROL JOINTS
  - 5) INSTALL 1" OF SOUND/BATT INSULATION ABOVE ACT CEILING TYPICAL



1 SECOND FLOOR REFLECTED CEILING PLAN  
1/4" = 1'-0"