

© 2016 RYAN SENATORE ARCHITECTURE

OFFICE FIT-UP  
622 CONGRESS STREET  
PORTLAND, MAINE



RYAN SENATORE ARCHITECTURE  
565 CONGRESS STREET  
PORTLAND, MAINE 04101  
207-650-6414  
senatorearchitecture.com

CONSULTANTS:

REVISIONS:

DATE: OCTOBER 31, 2016

PROJECT No. 1625

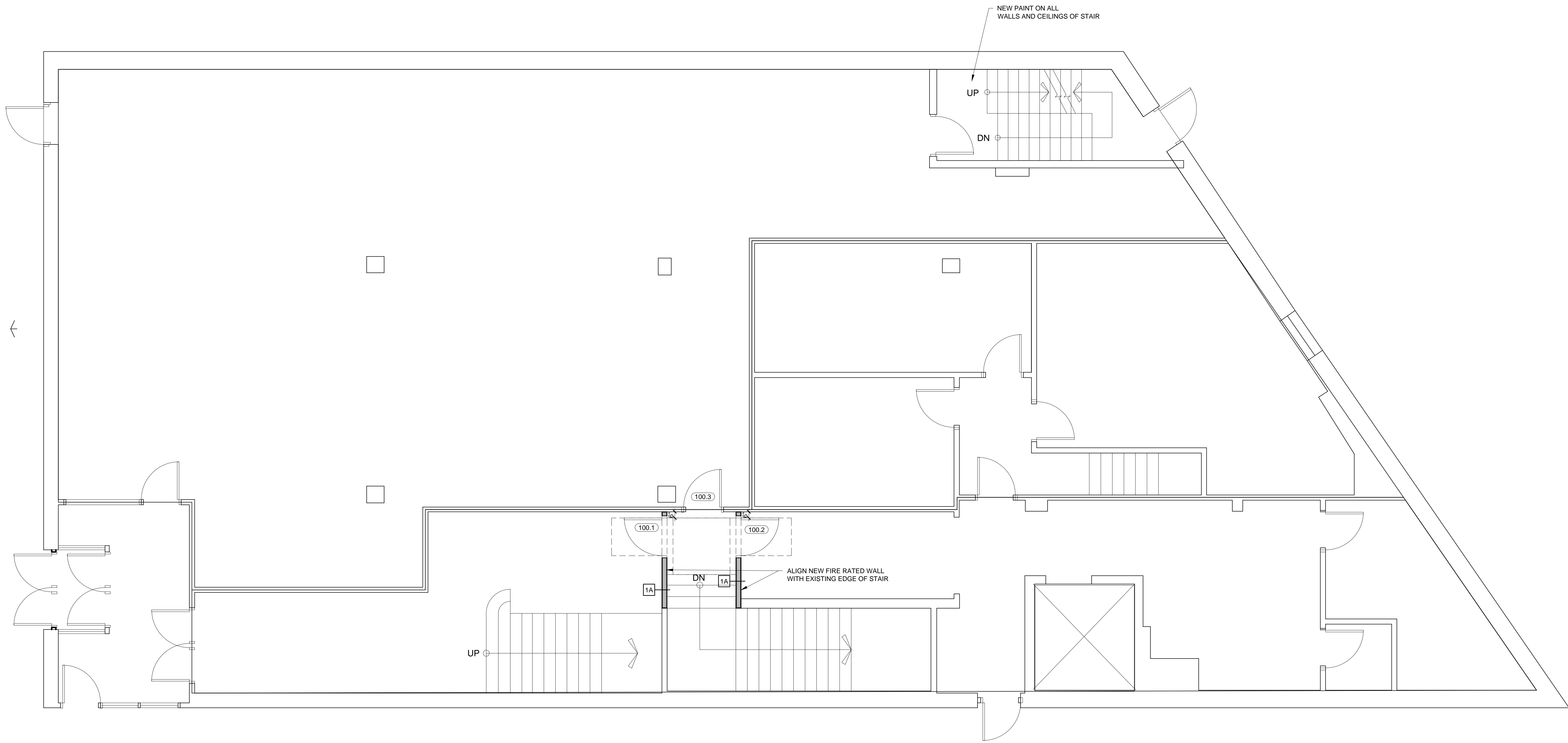
DRAWN BY: JPF, RJS

CHECKED BY: RJS

SCALE: AS NOTED

SHEET TITLE:  
FIRST FLOOR PLAN

A1-0



1 FIRST FLOOR PLAN  
1/4" = 1'-0"