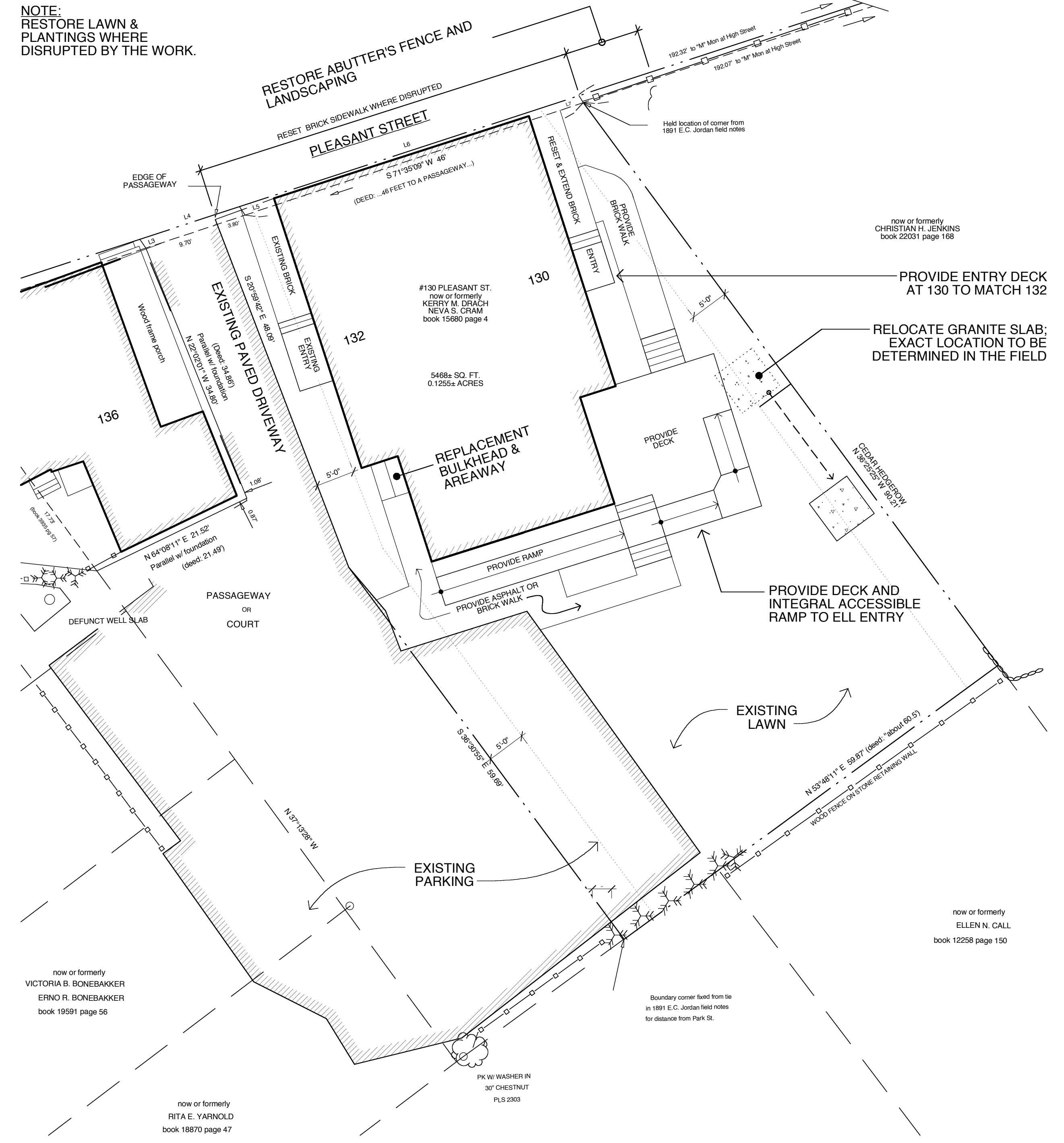


NOTE:
RESTORE LAWN &
PLANTINGS WHERE
DISRUPTED BY THE WORK.



DRAWING FROM: A-00 SITE PLAN 4 AUG 2011
RENTAL PROPERTY OF NEVA CRAM & KERRY DRACH

LEGEND

- ▲ SURVEY CONTROL
- MONUMENT FOUND
- STEEL PIPE/PIN FOUND
- 5/8" REBAR TO BE SET
- UTILITY POLE
- ⊗ LAMP POLE
- ⊞ CATCH BASIN
- ⊕ DRAIN MANHOLE
- ⊙ SEWER MANHOLE
- ⊛ GATE VALVE
- ⊖ HYDRANT
- ⊘ SIGN
- ⊞ MAILBOX
- ⊙ WELL
- ⊞ WET AREA
- ⊙ CONIFEROUS TREE
- ⊙ DECIDUOUS TREE
- WOOD FENCE
- PROPERTY LINE
- PAVEMENT

GRAPHIC SCALE
1 INCH = 10 FEET



DATE	REVISION

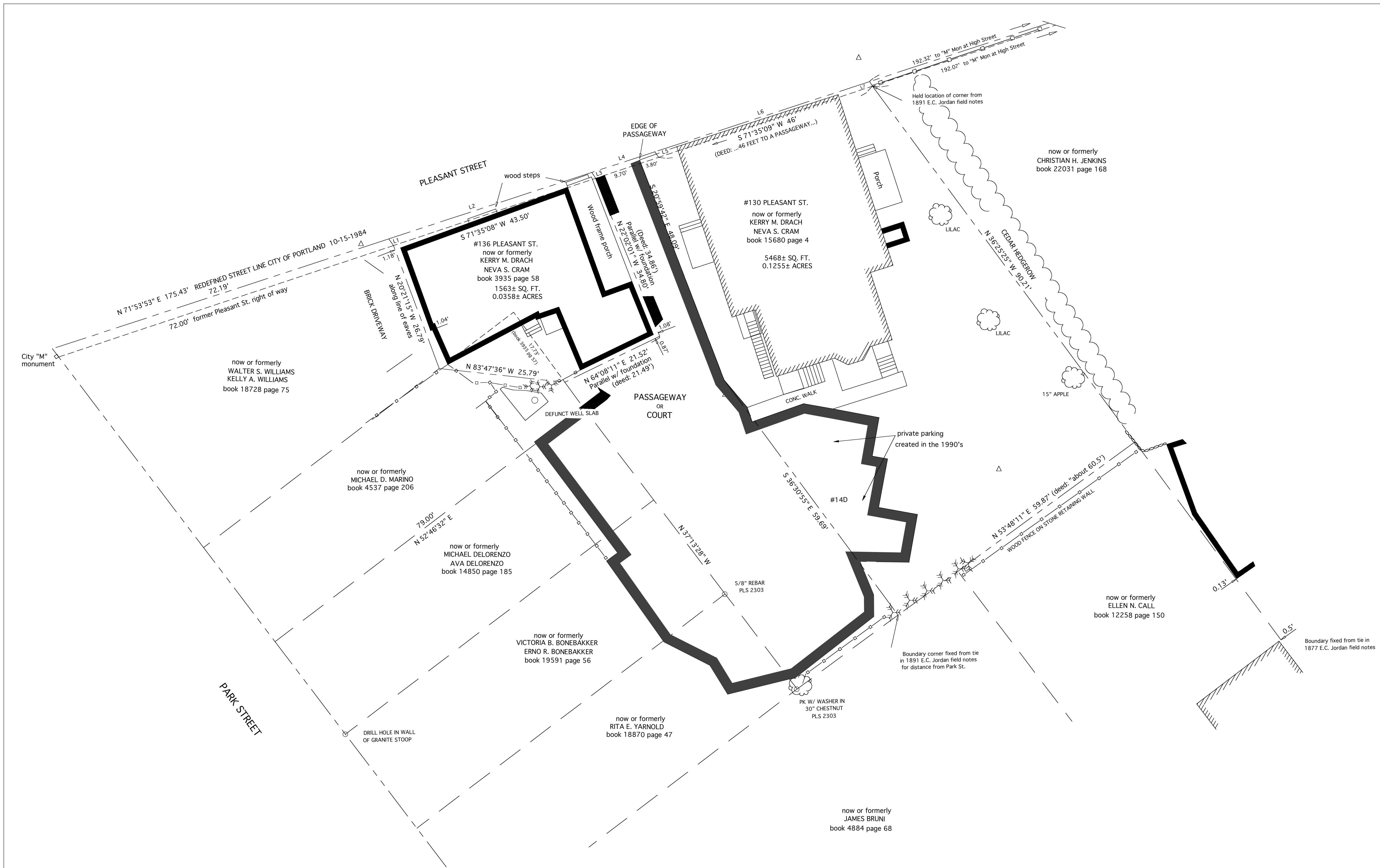
OWNER OF RECORD: KERRY M. DRACH & NEVA S. CRAM book 3935 page 58 book 15680 page 4

PROPOSED SITE PLAN
MADE FOR
KERRY M. DRACH & NEVA S. CRAM

PLAN OF
130 & 136 PLEASANT ST. PORTLAND, MAINE
MADE FOR
136 PLEASANT ST. PORTLAND, MAINE

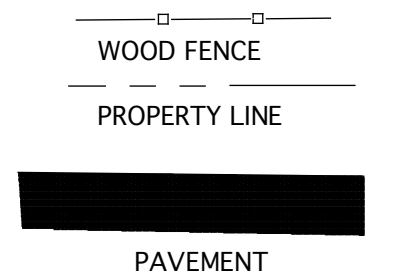
MILLS WHITAKER ARCHITECTS LLC
SITE PLAN FROM DRAWING A-00
AT SCALE TO MATCH ORIG. SURVEY

SURVEY DATE	PLAN DATE	CADRE	COLLECTOR	PER NO.
ORIENTATION	HEATH	WATSON	CONTORANT	SCALE



LEGEND

- ▲ SURVEY CONTROL
- MONUMENT FOUND
- STEEL PIPE/PIN FOUND
- 5/8" REBAR TO BE SET
- UTILITY POLE
- LAMP POLE
- CATCH BASIN
- ⊙ DRAIN MANHOLE
- ⊙ SEWER MANHOLE
- ⊙ GATE VALVE
- HYDRANT
- SIGN
- MAILBOX
- ⊙ WELL
- ⊙ WET AREA
- CONIFEROUS TREE
- DECIDUOUS TREE



GRAPHIC SCALE
1 INCH = 10 FEET



SCHEDULE OF DIMENSIONS FOR ANNEXED PORTIONS OF PLEASANT STREET RIGHT OF WAY

LINE	BEARING	DISTANCE
L1	S 35°20'09" E	1.68'
L2	S 71°53'53" W	43.60'
L3	S 34°09'49" E	1.43'
L4	S 71°53'53" W	13.53'
L5	S 33°56'07" E	1.35'
L6	S 71°53'53" W	46.11'
L7	N 31°54'33" W	1.08'

NOTE: FRONTAGE DIMENSIONS ALONG THE 1984 STREET LINE ARE PRO-RATED AGAINST THE FRONTAGES ALONG THE FORMER RIGHT OF WAY AS DEFINED BY EXISTING MONUMENTATION

PLANS REFERENCED:

- WORKING DRAWING AND FIELD NOTES FROM THE FILES OF E. C. JORDAN COMPANY 1877-1891 FILE #161 FILES AT THE OFFICES OF OWEN HASKELL, INC.
- PLAT OF PARK STREET RESIDENCES A CONDOMINIUM BY BACK BAY BOUNDARY, INC. DATED 10-12-2004
- PLAN OF PROPERTY AT 77 PARK STREET MADE FOR GREAT BAY COMPANY BY ROBERT P. TITCOMB, INC. DATED 10-8-1982 RECORDED IN C.C.R.D. IN UNIT OWNERSHIP FILE 105-1
- PLAN OF SECOND AMENDED SURVEY THE CARROLL MANSION A CONDOMINIUM 77 PARK STREET MADE FOR PERFORMANCE PRODUCTS LIMITED BY ROBERT P. TITCOMB, INC. DATED 10-8-1982 RECORDED IN C.C.R.D. IN PLAN BOOK 146 PAGE 60
- PLAN OF TOWN FARM TOWNHOUSE CONDOMINIUM HIGH AND PLEASANT STREET MADE FOR PLEASANT STREET DEVELOPMENT ASSOCIATES BY R. P. TITCOMB ASSOCIATES, INC. DATED 8-2-1984 RECORDED IN C.C.R.D. IN PLAN BOOK 145 PAGE 46
- STANDARD BOUNDARY SURVEY AND CONDOMINIUM CONVERSION ON PARK STREET MADE FOR RONALD SPINELLA BY NORTHEAST CIVIL SOLUTIONS DATED FEB 15, 2001 RECORDED IN C.C.R.D. IN PLAN BOOK 201 PAGE 73.
- PLAN OF LAND IN PORTLAND MAINE FOR PARK STREET ROWHOUSE BY OWEN HASKELL, INC. DATED 3-18-1980 REVISED THROUGH 10-4-1982, UNRECORDED.
- PLAN OF LAND IN PORTLAND MAINE MADE FOR ROBERT CRAM BY ROBERT P. TITCOMB, INC. DATED OCT. 8, 1976 JOB NUMBER 7665 FILE 772, UNRECORDED.

NOT VALID UNLESS SIGNED AND EMBOSSED

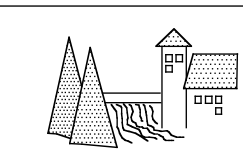
SHEET 1 of 1

DATE	REVISION

PLAN OF
BOUNDARY SURVEY
MADE FOR
KERRY M. DRACH & NEVA S. CRAM

PLAN OF
130 & 136 PLEASANT ST. PORTLAND, MAINE
MADE FOR
KERRY M. DRACH & NEVA S. CRAM

ROYAL RIVER SURVEY CO.
43 MARINA ROAD YARMOUTH, MAINE 04096
TEL: 207-846-5477 FAX: 207-846-0716 EMAIL: royalriver@maine.rrsc.com



SURVEY DATE	PLAN DATE	CLIENT	COLLECTION	JOB NO.
4/5/2005	4/14/2005	CRAMDRACH FB 61	24101	
ORIENTATION	HEATH	VEHICLE	CONTROLLER	SCALE
MAGNETIC 2005	ASSUMED	N/A	N/A	1"=10'

OWNER OF RECORD: KERRY M. DRACH & NEVA S. CRAM book 3935 page 58 book 15680 page 4