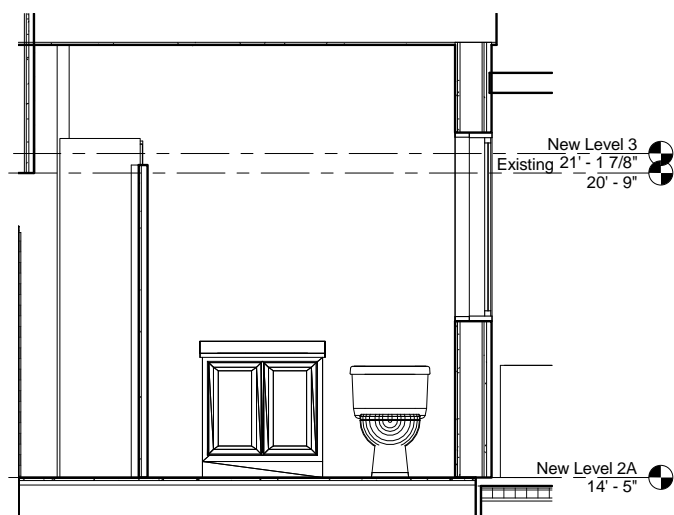
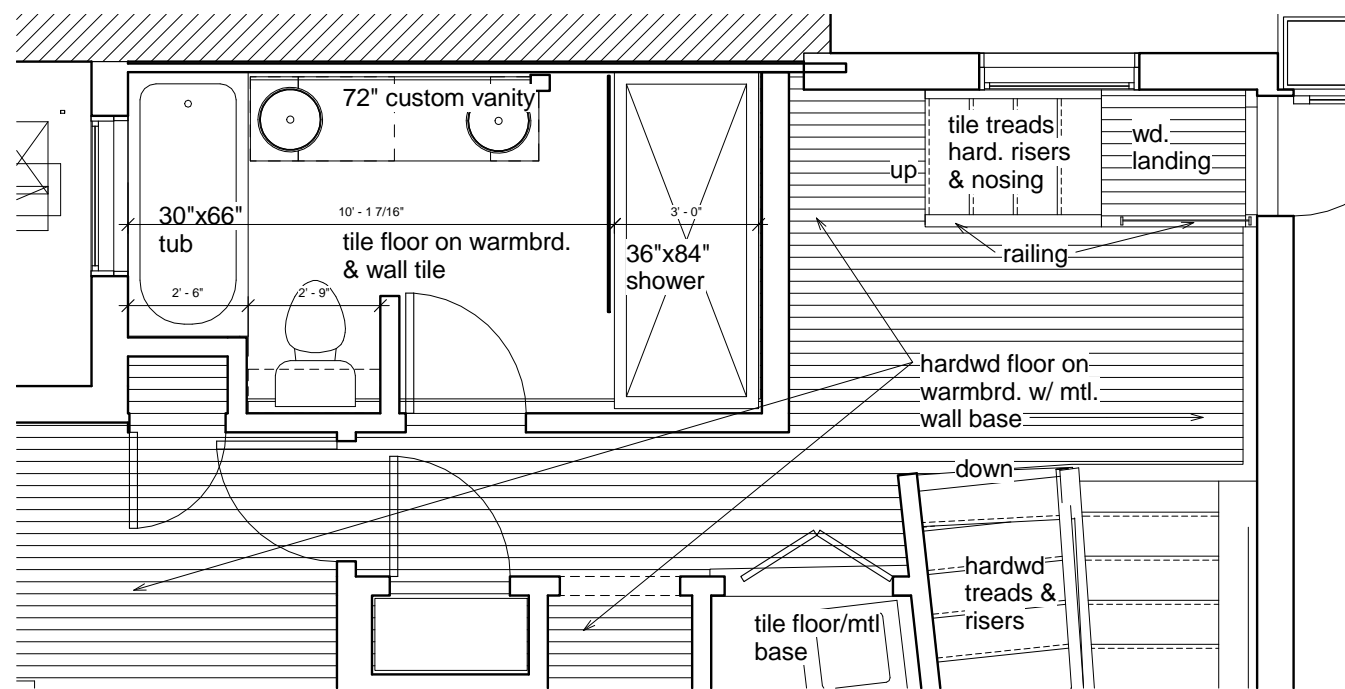


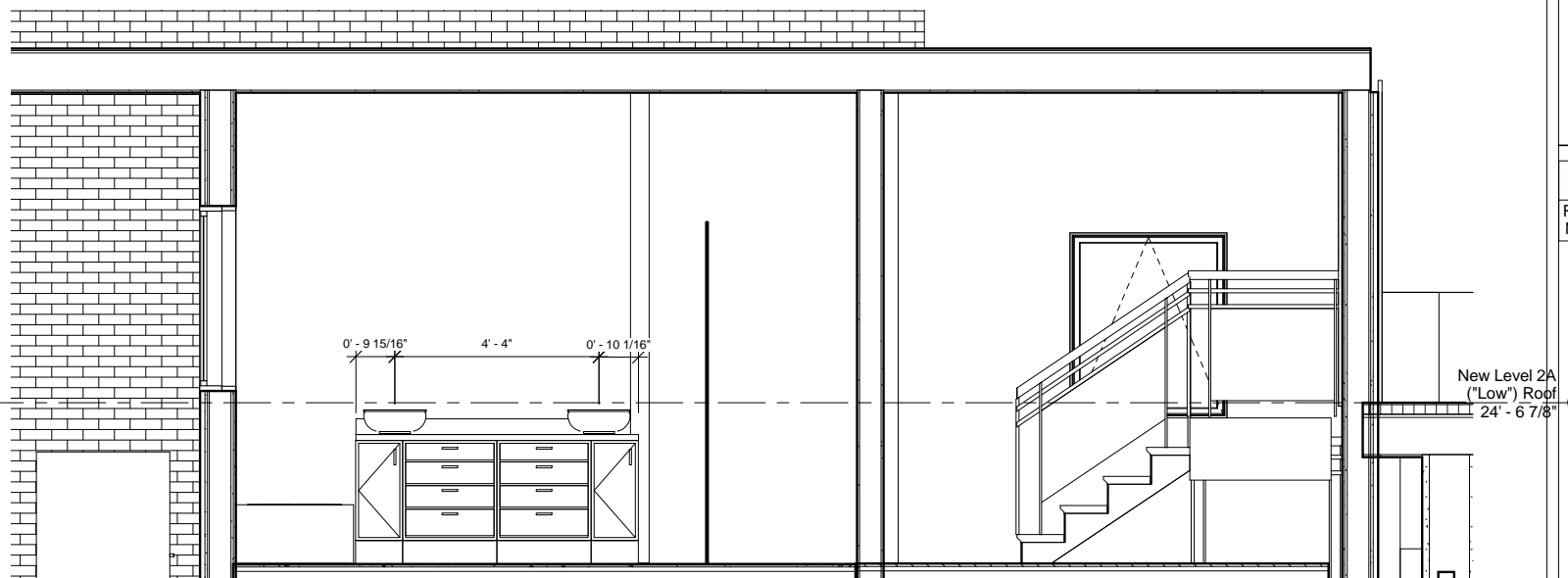
① Detail Bathrm Plan - Lvl 2A
1/2" = 1'-0"



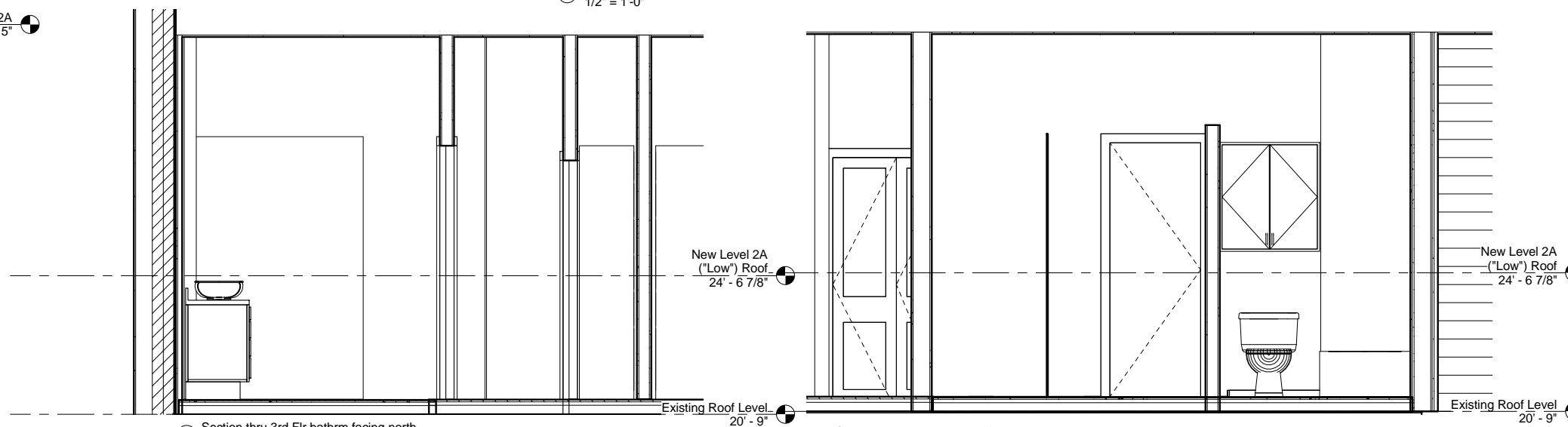
⑥ Section thr 2nd flr Bathrm facing west
1/2" = 1'-0"



② Detail Bathroom Plan- Lvl 3
1/2" = 1'-0"

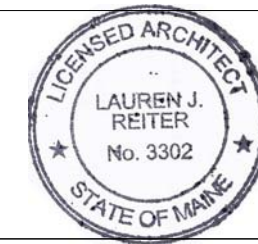


③ Section thru 3rd floor Bathrm facing west
1/2" = 1'-0"



⑤ Section thru 3rd flr bathrm facing north
1/2" = 1'-0"

④ Section thru 3rd flr Bathrm facing east
1/2" = 1'-0"



Reiter Architecture & Design
 PO Box 275, Brooklin ME 04616 tel. 917-502-2225 email: laurenreiter@yahoo.com
Consultants
Becker Structural Engineers
 75 York St # 3, Portland, ME 04101 Tel: (207) 879-1838

Revision Schedule		
Revision Number	Revision Description	Revision Date

Issued for permit 8/15/15

Reiter Residence
 35 Pleasant Street /
 6 South Street
 Portland, Maine 04101
RENOVATION

Enlarged Bathrooms & Details

Project number	RENOVATION
Date	Issue Date
Drawn by	Author
Checked by	Checker

A111

Scale 1/2" = 1'-0"