



Design No. U371 BXUV.U371 Fire-resistance Ratings - ANSI/UL 263

[Page Bottom](#)

Design/System/Construction/Assembly Usage Disclaimer

- Authorities Having Jurisdiction should be consulted in all cases as to the particular requirements covering the installation and use of UL Certified products, equipment, system, devices, and materials.
- Authorities Having Jurisdiction should be consulted before construction.
- Fire resistance assemblies and products are developed by the design submitter and have been investigated by UL for compliance with applicable requirements. The published information cannot always address every construction nuance encountered in the field.
- When field issues arise, it is recommended the first contact for assistance be the technical service staff provided by the product manufacturer noted for the design. Users of fire resistance assemblies are advised to consult the general Guide Information for each product category and each group of assemblies. The Guide Information includes specifics concerning alternate materials and alternate methods of construction.
- Only products which bear UL's Mark are considered Certified.

BXUV - Fire Resistance Ratings - ANSI/UL 263

BXUV7 - Fire Resistance Ratings - CAN/ULC-S101 Certified for Canada

[See General Information for Fire-resistance Ratings - ANSI/UL 263](#)

[See General Information for Fire Resistance Ratings - CAN/ULC-S101 Certified for Canada](#)

Design No. U371

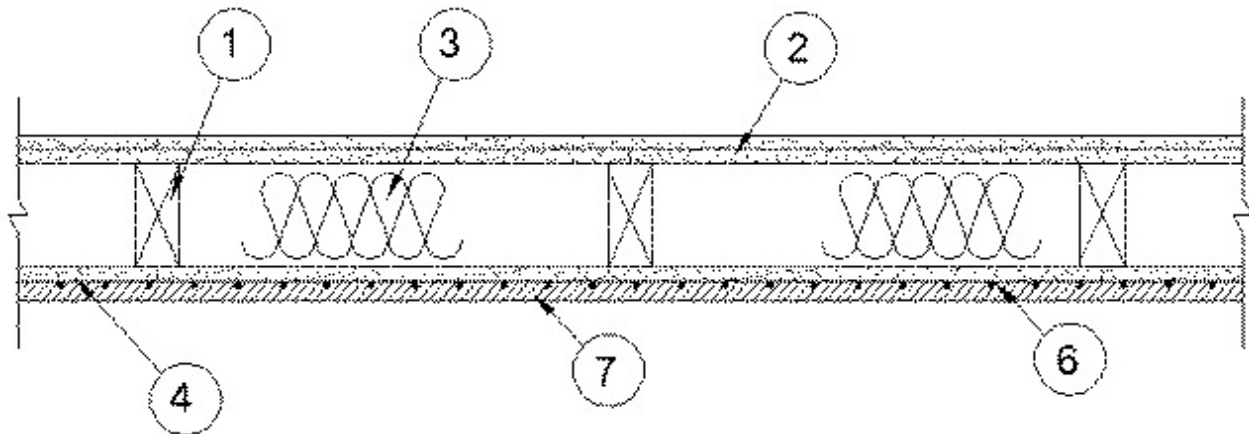
February 04, 2015

Bearing Wall Rating — 2 Hr.

Finish Rating — 41 Min.

This design was evaluated using a load design method other than the Limit States Design Method (e.g., Working Stress Design Method). For jurisdictions employing the Limit States Design Method, such as Canada, a load restriction factor shall be used — See Guide [BXUV](#) or [BXUV7](#)

*** Indicates such products shall bear the UL or cUL Certification Mark for jurisdictions employing the UL or cUL Certification (such as Canada), respectively.**



1. **Wood Studs** — Nom 2 by 4 in. spaced 16 in. OC, effectively cross-braced.

2. **Gypsum Board*** — 5/8 in. thick, two layers applied either horizontally or vertically. Inner layer attached to studs with 1-1/4 in. long Type S steel screws spaced 12 in. OC. Outer layer attached to studs over inner layer with 2 in. long Type S steel screws spaced 12 in. OC offset 6 in. from base layer. Vertical joints located over studs. Vertical and horizontal joints between inner and outer layers staggered. Outer layer joints covered with joint tape and compound, nailheads covered with joint compound. As an alternate, nom 3/32 in. thick gypsum veneer plaster may be applied to the entire surface of Classified veneer baseboard. Joints reinforced. Wallboard other than 48 in. wide must be applied horizontally.

NATIONAL GYPSUM CO — Types FSK, FSK-C, FSK-G, FSW, FSW-3, FSW-8, FSW-C, FSW-G, FSMR-C, FSL, SoundBreak XP Type X Gypsum Board.

3. **Batts and Blankets*** — Min 3 in. thick mineral wool batt insulation friction fit between studs.

THERMAFIBER INC — Type SAFB

4. **Gypsum Sheathing*** — 5/8 in. thick exterior gypsum sheathing, 48 in. wide sheets. Attached directly to studs horizontally or vertically with 1-3/4 in. long, 11d, 7/16 in. diam flathead galv roofing nails spaced 8 in. OC or 2 in. long Type S steel screws spaced 8 in. OC. When wood structural panel sheathing (Item 5) is used gypsum sheathing to be installed over wood structural panel sheathing. Gypsum sheathing attached to studs, through wood sheathing, horizontally or vertically with 2-1/4 in. long, 11d, 7/16 in. diam flathead galv roofing nails spaced 8 in. OC or 2-1/2 in. long Type S steel screws spaced 8 in. OC Vertical joints located over studs and staggered between adjacent rows.

NATIONAL GYPSUM CO — Types FSK, FSMR-C, FSW, FSW-3, FSW-6, FSW-8.

5. **Wood Structural Panel Sheathing** — (Optional, not shown, for use with Item 4) - Nom 15/32 in. thick, 4 ft wide, min grade "C-D" or "Sheathing". Installed with long dimension of sheet (strength axis) or face grain of plywood parallel with or perpendicular to studs. Vertical joints centered on studs.

6. **Prefurred Stucco Netting** — Nom 1-1/2 in. by 1-1/2 in., min 17 MSG galvanized steel netting applied over gypsum sheathing to wood studs with 1-1/4 in. by 1 in. steel staples spaced 7 in. OC. (Note If optional wood structural panel sheathing is used, fastener length must be increased such that penetration into framing members shall be not less than 3/4 in.)

6A. **Metal Lath** — As an option to the stucco netting, min 1.7 lb/sq yd expanded steel lath fastened to the wood studs through the gypsum sheathing with 1-1/4 in. long Type S lath head steel screws spaced 7 in. OC. (Note If optional wood structural panel sheathing is used, fastener length must be increased such that penetration into framing members shall be not less than 3/4 in.).

7. **Stucco** — Portland cement type stucco mixed at a rate of 3 parts sand to 1 part portland cement to 1.7 liters water. Thickness of stucco to be min 3/4 in. as measured to face of netting or lath.

7A. **Brick Veneer** — As an alternative to Items 6 and 7, any type of 4 in. wide brick may be used. Brick veneer fastened with corrugated metal wall ties attached over sheathing to wood studs with 1-1/4 in. Type S steel screws spaced not more than each fourth course and a max 24 in. OC horizontally. (Note If optional wood structural panel sheathing is used, fastener length must be increased such that penetration into framing members shall be not less than 3/4 in.)

8. **Cementitious Backer Units*** — (Optional Item Not Shown - For Use On Face Of 2 Hr Systems With All Standard Items Required) - 7/16 in., 1/2 in., 5/8 in., 3/4 in. or 1 in. thick, min. 32 in. wide.- Applied vertically with vertical joints centered over studs. Face layer fastened over gypsum board to studs and runners with cement board screws of adequate length to penetrate stud by a minimum of 3/8 in. for steel framing members, and a minimum of 3/4 in. for wood framing members spaced a max of 8 in. OC.

NATIONAL GYPSUM CO — Type DuraBacker, PermaBase, DuraBacker Plus, or PermaBase Plus

*** Indicates such products shall bear the UL or cUL Certification Mark for jurisdictions employing the UL or cUL Certification (such as Canada), respectively.**

Last Updated on 2015-02-04

[Questions?](#)

[Print this page](#)

[Terms of Use](#)

[Page Top](#)

© 2015 UL LLC

The appearance of a company's name or product in this database does not in itself assure that products so identified have been manufactured under UL's Follow-Up Service. Only those products bearing the UL Mark should be considered to be Certified and covered under UL's Follow-Up Service. Always look for the Mark on the product.

UL permits the reproduction of the material contained in the Online Certification Directory subject to the following conditions: 1. The Guide Information, Assemblies, Constructions, Designs, Systems, and/or Certifications (files) must be presented in their entirety and in a non-misleading manner, without any manipulation of the data (or drawings). 2. The statement "Reprinted from the Online Certifications Directory with permission from UL" must appear adjacent to the extracted material. In addition, the reprinted material must include a copyright notice in the following format: "© 2015 UL LLC".