

3 Loft Plan
SCALE: 1/4" = 1'

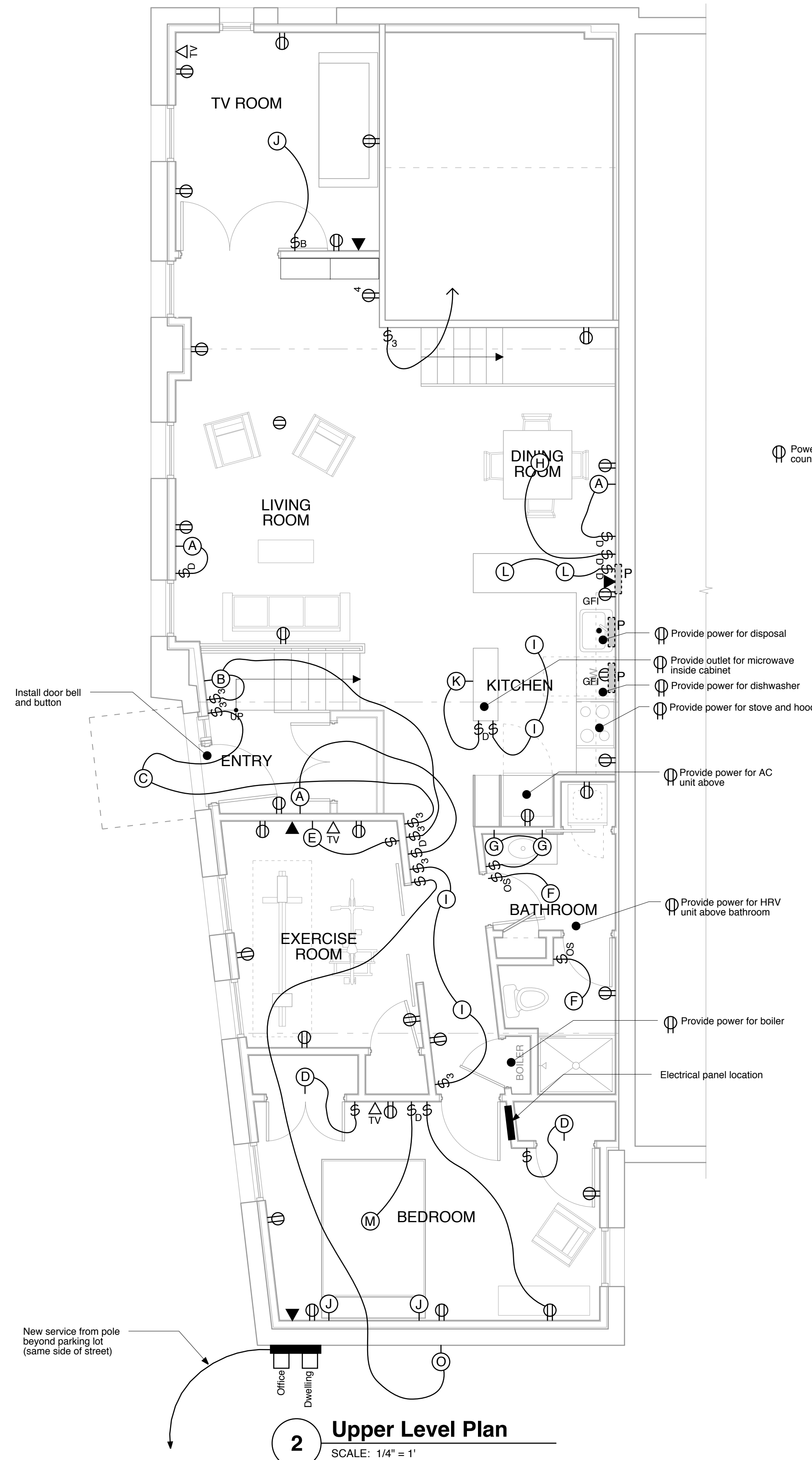
KEY

- Duplex outlet
- Four-plex outlet
- Floor outlet
- Exterior duplex outlet
- Telephone
- Data
- Cable TV
- Switch
- Switch with dimmer
- Switch with occupancy sensor
- Switch with timer
- Switch with pilot light
- Empty switch box with blank cover
- Light fixture
- Wall-mounted light fixture
- Low voltage fixture - twin wires running between opposite walls
- Under cabinet light fixture
- Up light at desk dividers
- Direct/indirect fluorescent

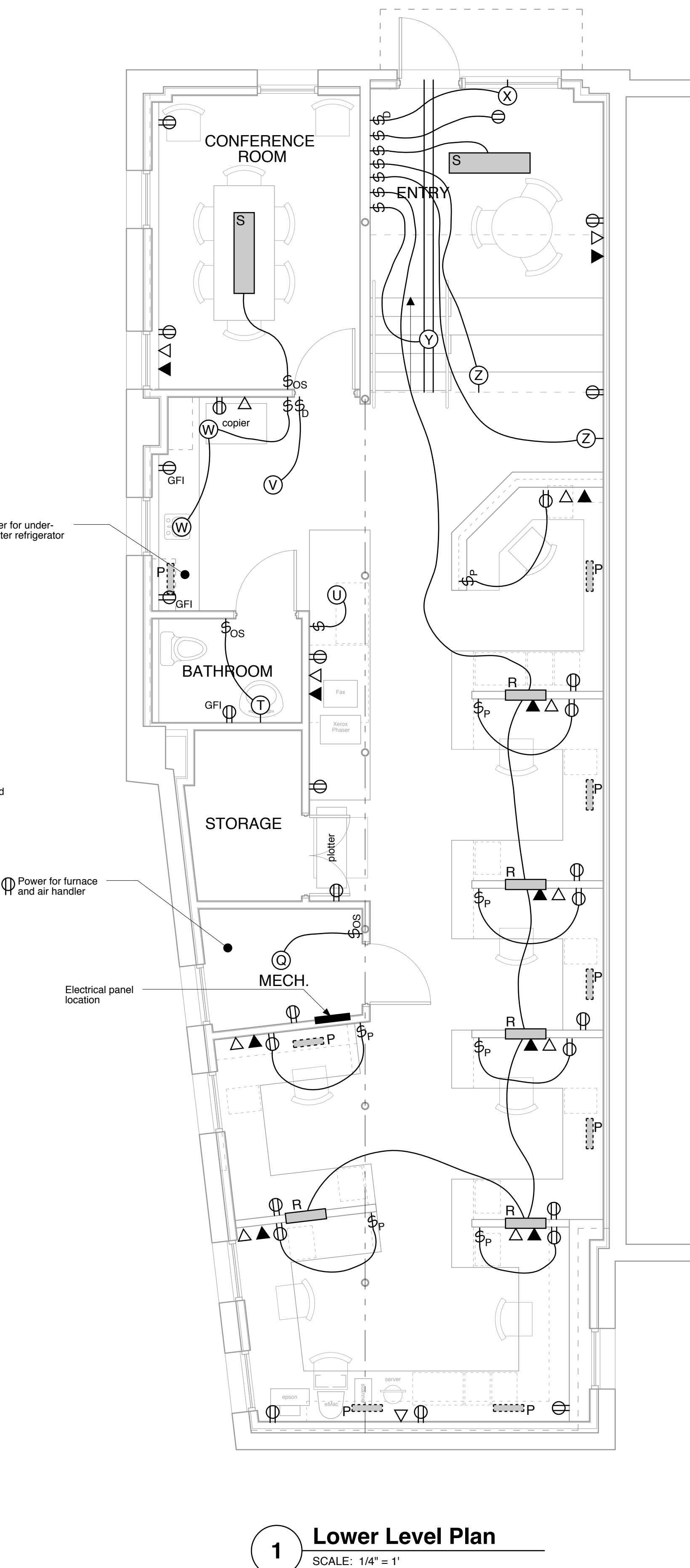
GENERAL NOTES:

- 1- Install ENERGY STAR Advanced Lighting Package:
 - 50% of fixtures in kitchen, dining, living, bathroom, hall, stair to be Energy Star Qualified
 - 25% of fixtures in bedroom, office, tv room to be Energy Star Qualified
 - 50% of fixtures outdoors to be Energy Star Qualified [EAB.3]
- 2- Install Energy Star labeled exhaust fan in kitchen (100 CFM) and bathrooms (50 CFM) exhausting to the outdoors [IEQ5.1]
- 3- Install occupancy sensor or automatic humidistat controller or timer for both exhaust fans to operate fan either for a timed interval after occupant leaves room or until humidity level is reduced [IEQ5.2]

Note: All outlet, light, and switch locations to be reviewed in field before rough wiring



2 Upper Level Plan
SCALE: 1/4" = 1'



1 Lower Level Plan
SCALE: 1/4" = 1'

Richard Renner/Architects
103 South Main Street
Shrewsbury, MA 01770
508.651.2385
508.651.0911 fax

61 Pleasant Street
Suite 105
Portland, ME 04101
207.725.9699
207.725.9699 fax

35 Pleasant Street
Office and Loft Renovation
35 Pleasant Street
Portland, Maine

Electrical Plans
Drawn by: File Name: E1.1 ElectricalPlans
Scale: 1/4" = 1'-0" Project No. 2006-08
Date: 11.03.06 Revised:

E1.1