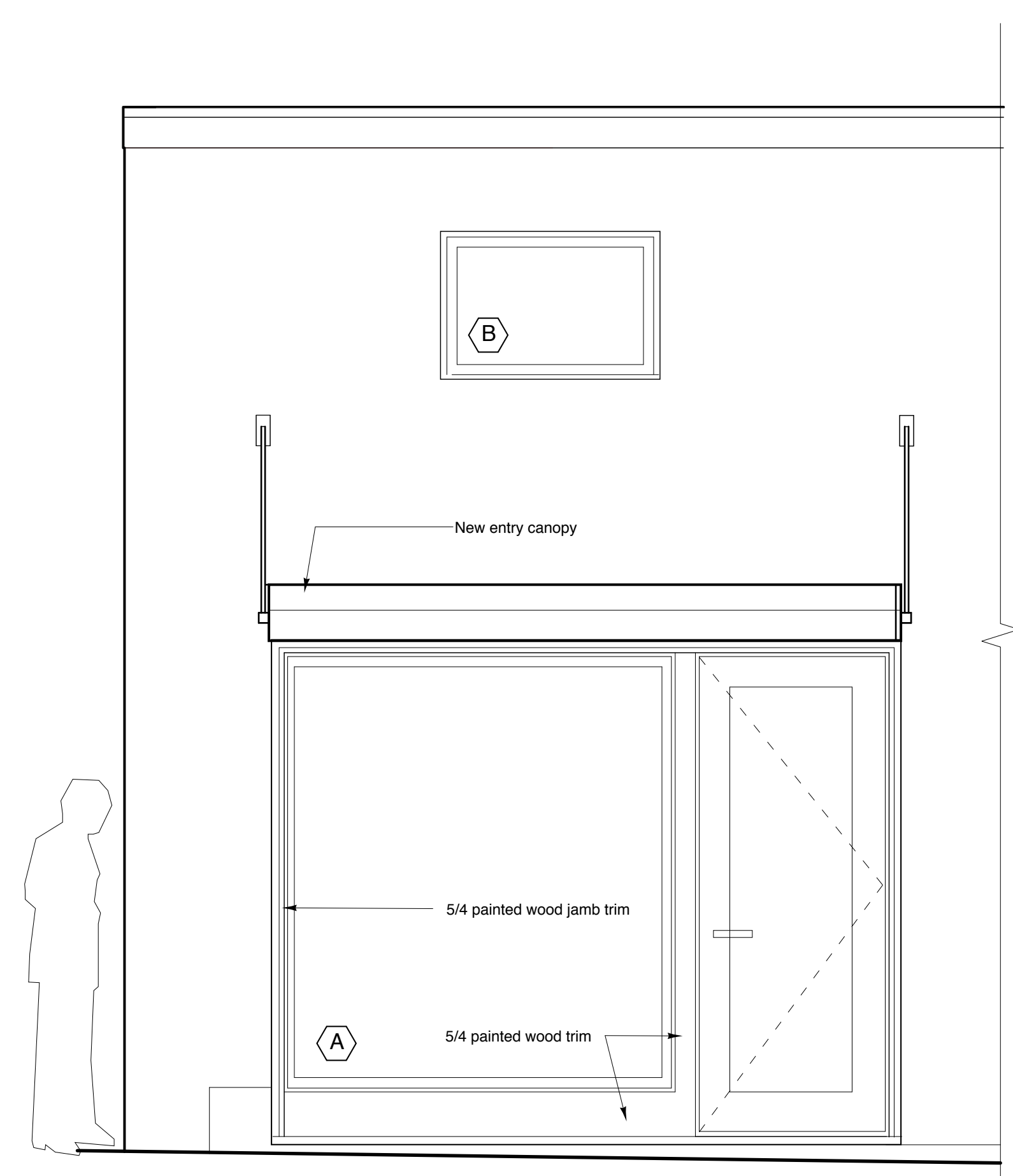
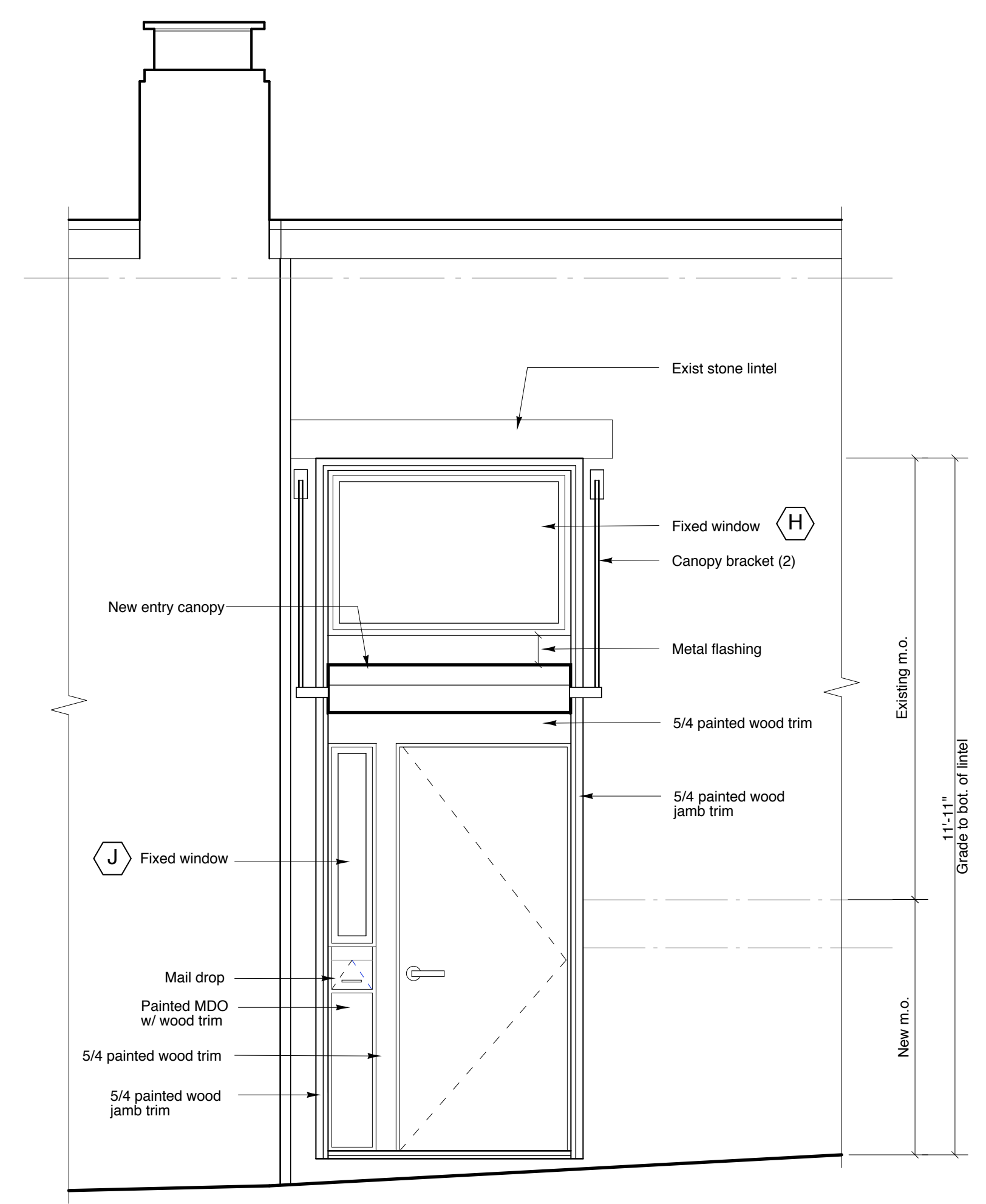


1 South Elevation-Pleasant Street
SCALE: 1/4" = 1'-0"

2 East Elevation-South Street
SCALE: 1/4" = 1'-0"

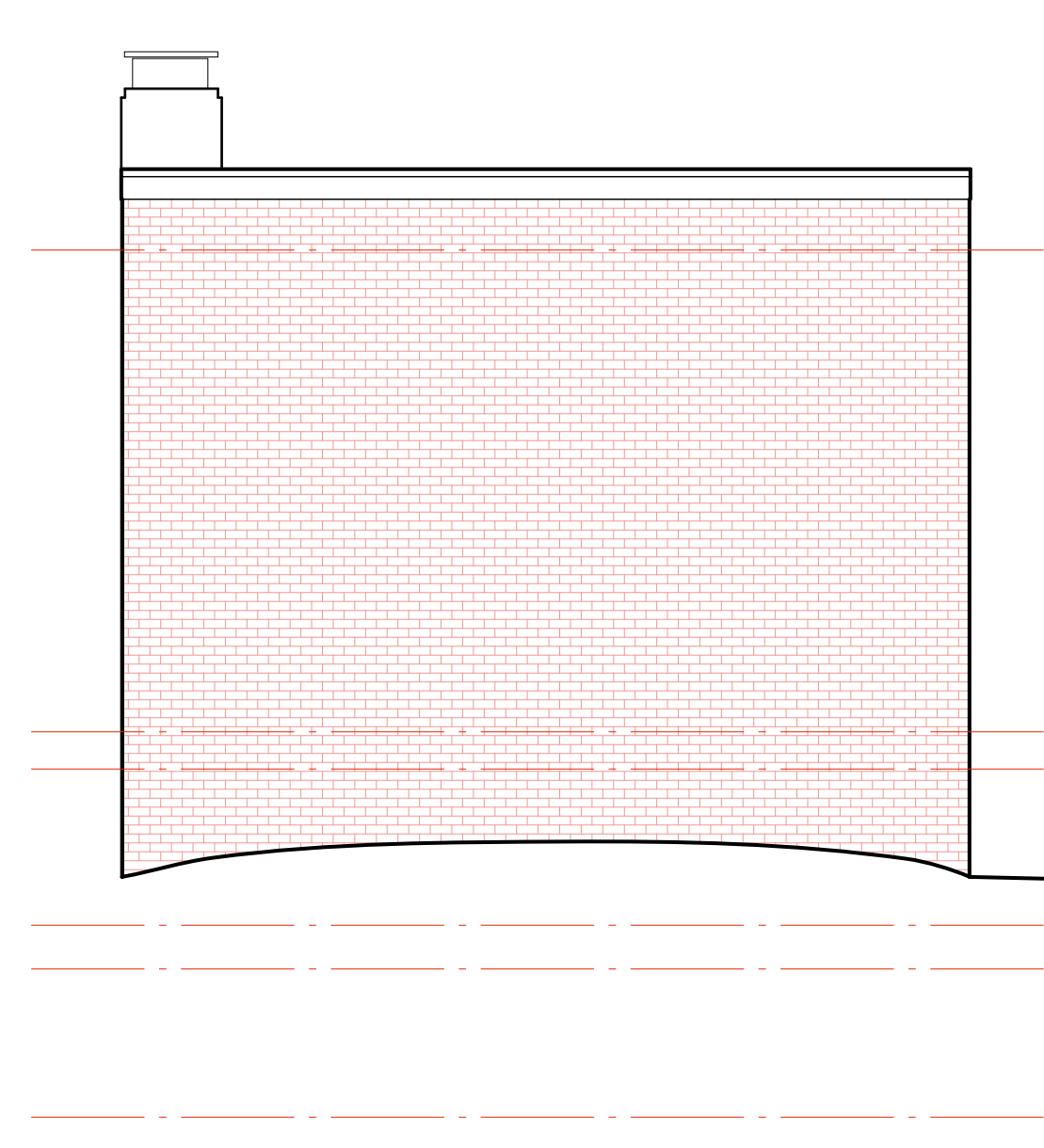


6 South Elevation of Office Entry
SCALE: 1/2" = 1'-0"
See 2/A3.2

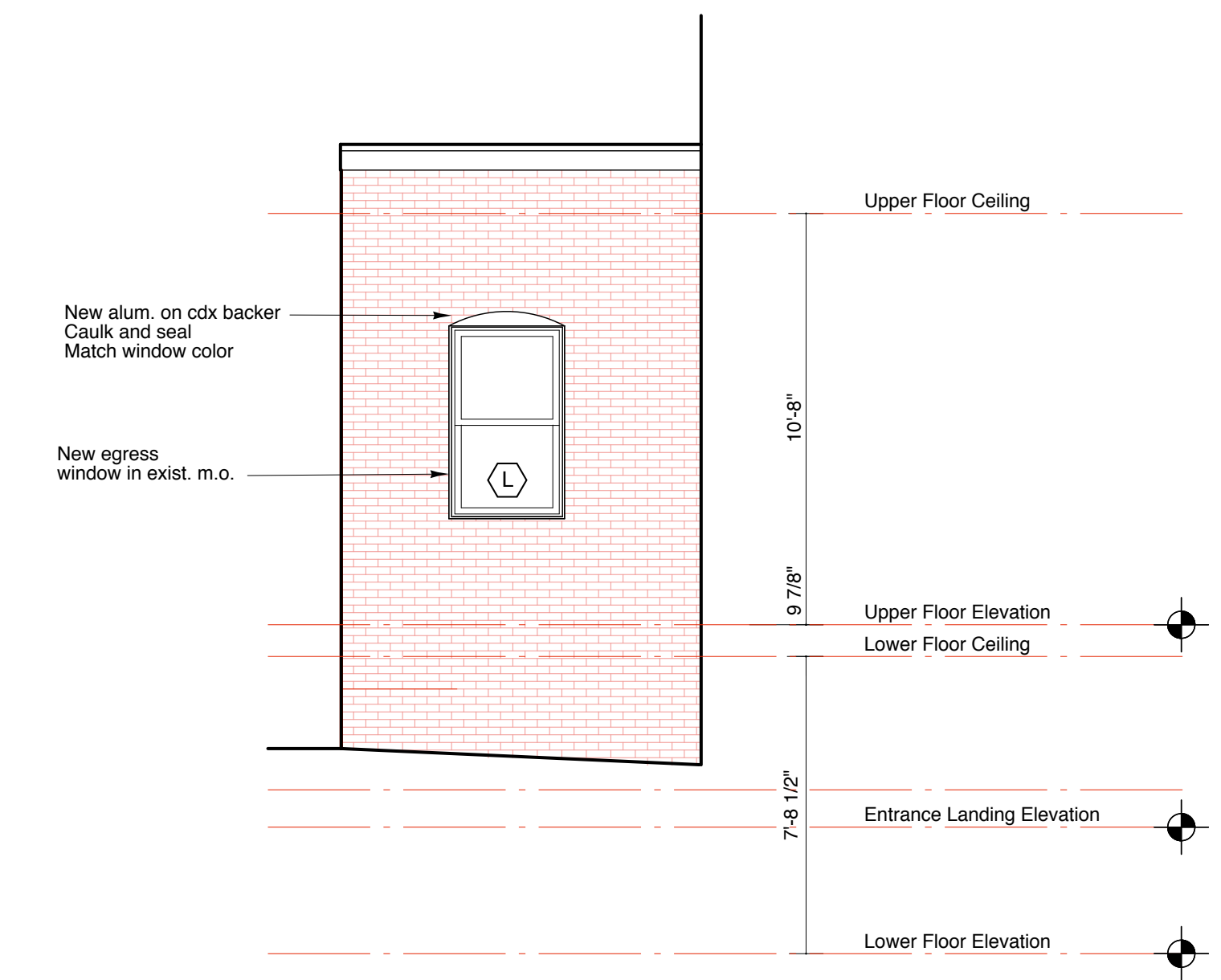


5 East Elevation of Loft Entry
SCALE: 1/2" = 1'-0"
See 1/A3.2

5A Details - Mail Drop
SCALE: 1/4" = 1'-0"



4 North Elevation
SCALE: 1/4" = 1'-0"



3 West Elevation
SCALE: 1/4" = 1'-0"

Richard Renner/Architects
109 South Main Street
Shelburne, MA 01770
508.651.2385
508.651.0911 fax

61 Pleasant Street
Suite 105
Portland, ME 04101
207.773.9699 fax
207.773.9699 fax

Consultants:

35 Pleasant Street
Office and Loft Renovation
35 Pleasant Street
Portland, Maine

Building Elevations
File Name: D1.3 Elevation/Masonry
Project No. 2006-08
Scale: 1/4" = 1'-0"
Date: 12.15.06
Revised:

A1.3