

**EXHAUST FAN INFORMATION - Job#2850684**

FAN UNIT NO.	TAG	FAN UNIT MODEL #	CFM	ESP.	RPM	HP.	BHP.	Ø	VOLT.	FLA	WEIGHT (LBS.)	SONES
1		NCA24HPFA	3950	2.000	1079	3.000	2.1640	1	230	17.0	307	20

**MUA FAN INFORMATION - Job#2850684**

FAN UNIT NO.	TAG	FAN UNIT MODEL #	BLOWER	HOUSING	DESIGN CFM	ESP.	RPM	HP.	BHP.	Ø	VOLT.	FLA	WEIGHT (LBS.)	SONES
2		A2-G12	G12	A2	2695	0.400	639	1.000	0.5580	1	230	4.5	390	14.7

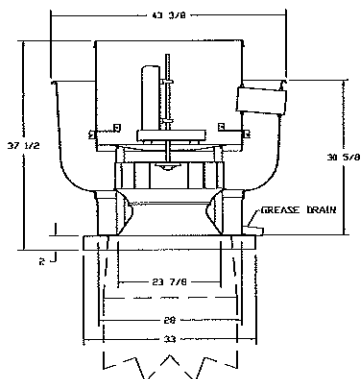
**FAN OPTIONS**

FAN UNIT NO.	TAG	OPTION (Qty. - Descr.)
1		1 - Grease Box
		1 - 3 Year Extended Motor Warranty
		1 - Extra Set of Belts
		1 - Fan Base Ceramic Seal - For Grease Ducts
		1 - Hinge Kit (HD) - Ships Loose For Curb Supplied by Others
2		1 - Full Crating For Untempered Fans
		1 - Gravity Backdraft Damper For Size 2 Housing
		1 - 3 Year Extended Motor Warranty
		1 - Extra Set of Belts
		1 - Wall Mount Option For Size 2 Untempered Fan

**FAN ACCESSORIES**

FAN UNIT NO.	TAG	EXHAUST				SUPPLY		
		GREASE CLIP	GRAVITY DAMPER	WALL MOUNT	SIDE DISCHARGE	GRAVITY DAMPER	HORIZONTAL DAMPER	WALL MOUNT
1		YES			YES	YES		YES
2								

**FAN #1 NCA24HPFA - EXHAUST FAN**



**FEATURES:**

- ROOF MOUNTED FANS
- RESTAURANT MODEL
- UL705 AND UL762
- AREA SEAL AND AIR CERTIFIED
- WIRING FROM MOTOR TO DISCONNECT SWITCH
- WEATHERPROOF DISCONNECT
- HIGH HEAT OPERATION 300°F (149°C)
- GREASE CLASSIFICATION TESTING

**THERMAL TEMPERATURE TEST**  
EXHAUST FAN MUST OPERATE CONTINUOUSLY WHILE EXHAUSTING AIR AT 300°F (149°C) UNTIL ALL FAN PARTS HAVE REACHED THERMAL EQUILIBRIUM, AND WITHOUT ANY DETERIORATING EFFECTS TO THE FAN WHICH WOULD CAUSE UNSAFE OPERATION.

**ABNORMAL FLARE-UP TEST**  
EXHAUST FAN MUST OPERATE CONTINUOUSLY WHILE EXHAUSTING BURNING GREASE VAPORS AT 600°F (316°C) FOR A PERIOD OF 15 MINUTES WITHOUT THE FAN BECOMING DAMAGED TO ANY EXTENT THAT COULD CAUSE AN UNSAFE CONDITION.

**OPTIONS:**

- GREASE BOX
- 3 YEAR EXTENDED MOTOR WARRANTY
- EXTRA SET OF BELTS
- FAN BASE CERAMIC SEAL - FOR GREASE DUCTS
- HINGE KIT (HD) - SHIPS LOOSE FOR CURB SUPPLIED BY OTHERS

DUCTWORK BETWEEN EXHAUST RISER OR HOOD AND FAN (BY OTHERS)

**CUSTOMER APPROVAL TO MANUFACTURE:**

Approved as Noted

Approved with IBI Exception Taken

Revise and Resubmit

SIGNATURE \_\_\_\_\_

Your Title \_\_\_\_\_ Date \_\_\_\_\_



**CAPTIVEAIRE**

JOB Artemisia r.1	
LOCATION Shapleigh, ME,	
DATE 12/5/2016	JOB # 2850684
DWG # 4	DRAWN BY KCD-21
REV.	SCALE 3/8" = 1'-0"