

Prepared For:
LAFAYETTE PROPERTIES, LLC
 155 LITTLEFIELD STREET
 BANGOR, MAINE 04401

Consultant:
Building Envelope Specialists
 PC BOX 289 SOUTH PORTLAND MAINE 04116
 PHONE: 207.460.8888
 23 Thornbury Way
 Windham, ME 04092
 www.m2e.com
M2E STRUCTURAL ENGINEERING P.C.

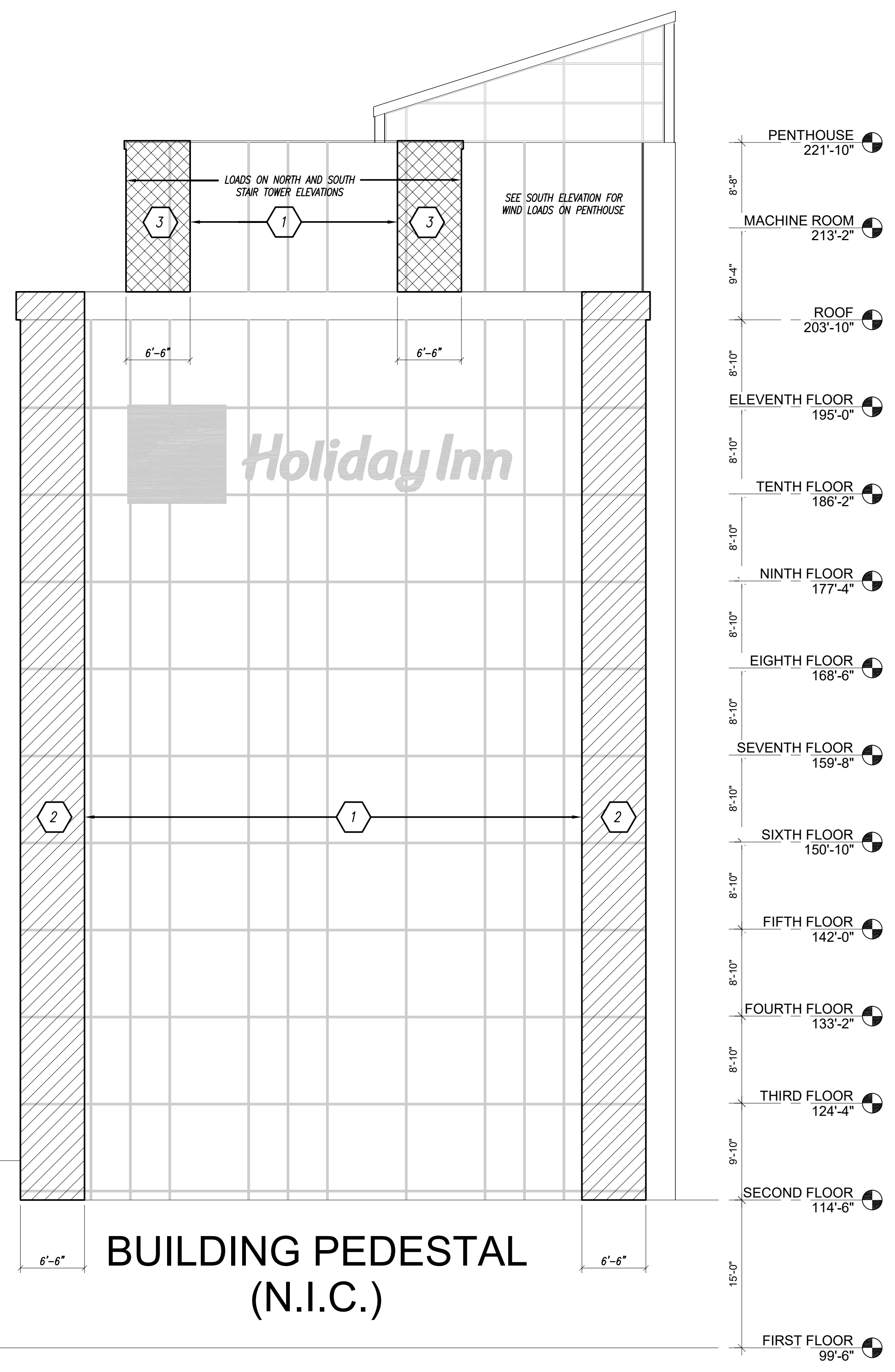
Architect:
ARCHETYPE architects
 48 Union Wharf Portland, Maine 04101
 (207) 772-6022 ARCHETYPE@ARCHETYPEPA.COM

Project:
Holiday Inn
 88 Spring Street
 Portland, ME

Revisions:

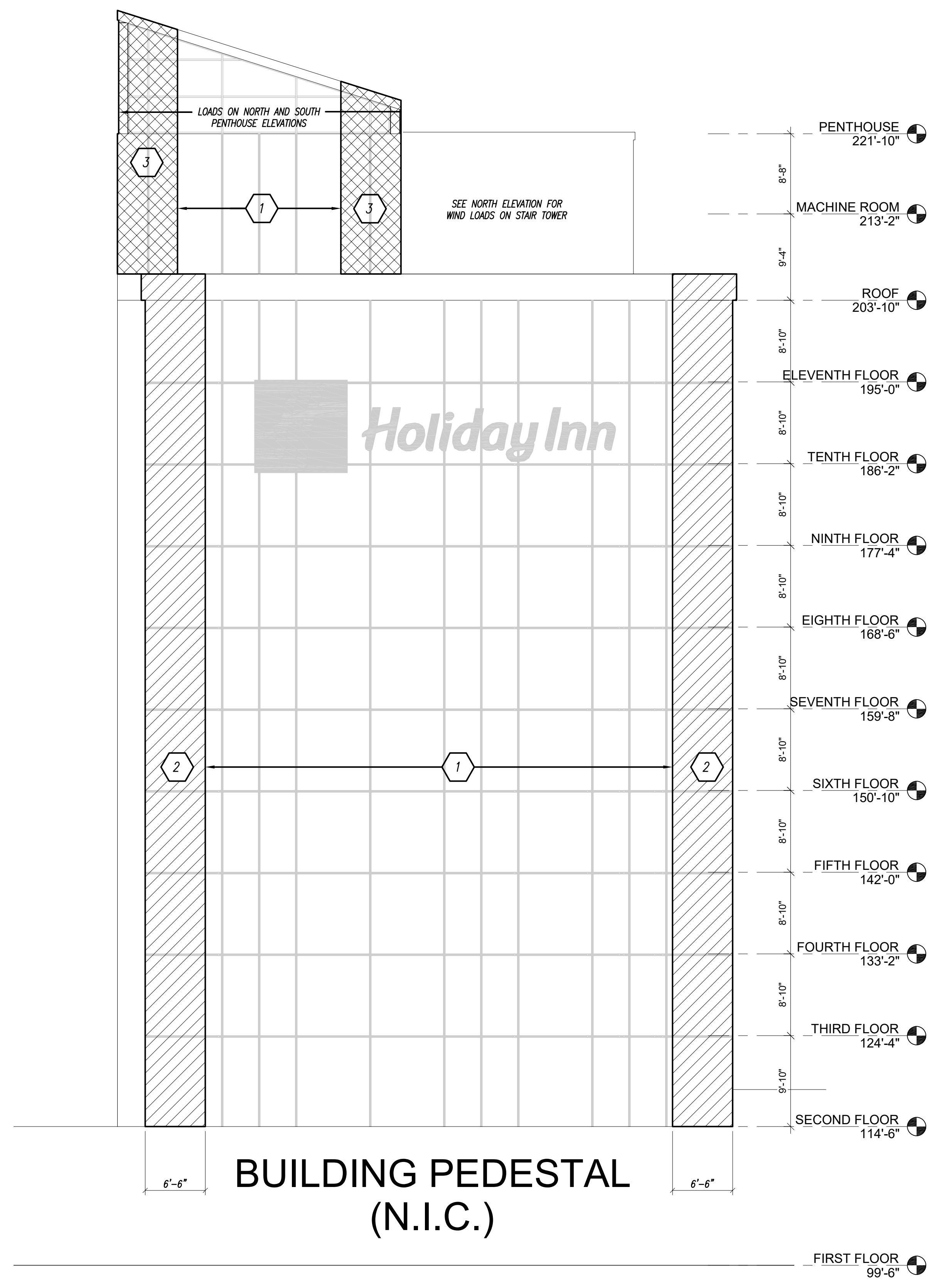
Date: JUNE 30, 2017
 Scale: NONE
DESIGN WIND LOADS NORTH AND SOUTH ELEVATIONS

S0.2



NORTH ELEVATION WIND LOADS

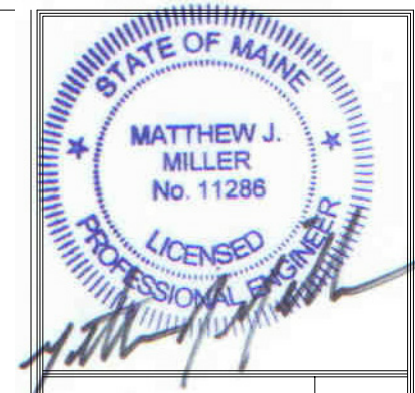
N.T.S.



SOUTH ELEVATION WIND LOADS

N.T.S.

ZONE	DESIGN WIND LOAD
1	37 PSF
2	66 PSF
3	67 PSF



Prepared For:
LAFAYETTE PROPERTIES, LLC
 155 LITTLEFIELD STREET
 BANGOR, MAINE 04401

Consultant:
Building Envelope Specialists
 23 Thornbury Way
 Windham, ME 04092
 PHONE: 207.460.8888
 WWW: m2se.com

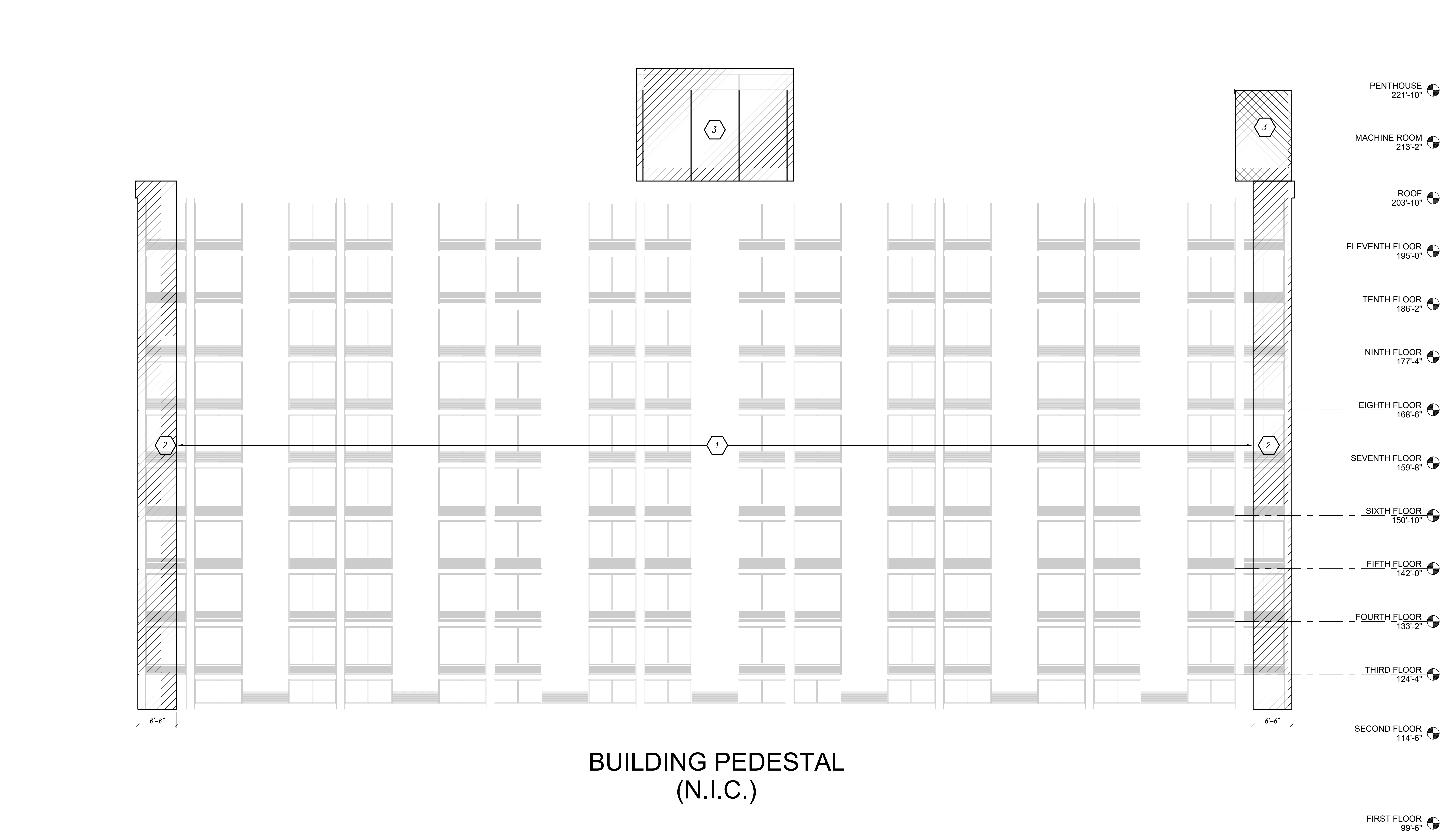
Architect:
ARCHETYPE architects
 48 Union Wharf Portland, Maine 04101
 (207) 772-6022 ARCHETYPE@ARCHETYPEPA.COM

Project:
Holiday Inn
 88 Spring Street
 Portland, ME

Revisions:

Date: JUNE 30, 2017
 Scale: NONE
DESIGN WIND LOADS WEST ELEVATION

S0.3



WEST ELEVATION WIND LOADS
 N.T.S.

ZONE	DESIGN WIND LOAD
1	37 PSF
2	66 PSF
3	67 PSF

- PENTHOUSE 221'-10"
- MACHINE ROOM 213'-2"
- ROOF 203'-10"
- ELEVENTH FLOOR 195'-0"
- TENTH FLOOR 186'-2"
- NINTH FLOOR 177'-4"
- EIGHTH FLOOR 168'-6"
- SEVENTH FLOOR 159'-8"
- SIXTH FLOOR 150'-10"
- FIFTH FLOOR 142'-0"
- FOURTH FLOOR 133'-2"
- THIRD FLOOR 124'-4"
- SECOND FLOOR 114'-6"
- FIRST FLOOR 99'-6"