

Prepared For:  
**LAFAYETTE PROPERTIES, LLC**  
 155 LITTLEFIELD STREET  
 BANGOR, MAINE 04401

Consultant:  
**Building Envelope Specialists**  
 P.O. BOX 289, SOUTH PORTLAND, MAINE 04116  
 PHONE: 207.460.8888  
 23 Thornbury Way  
 Windham, ME 04092  
 www.m2e.com  
**M2E STRUCTURAL ENGINEERING, P.C.**

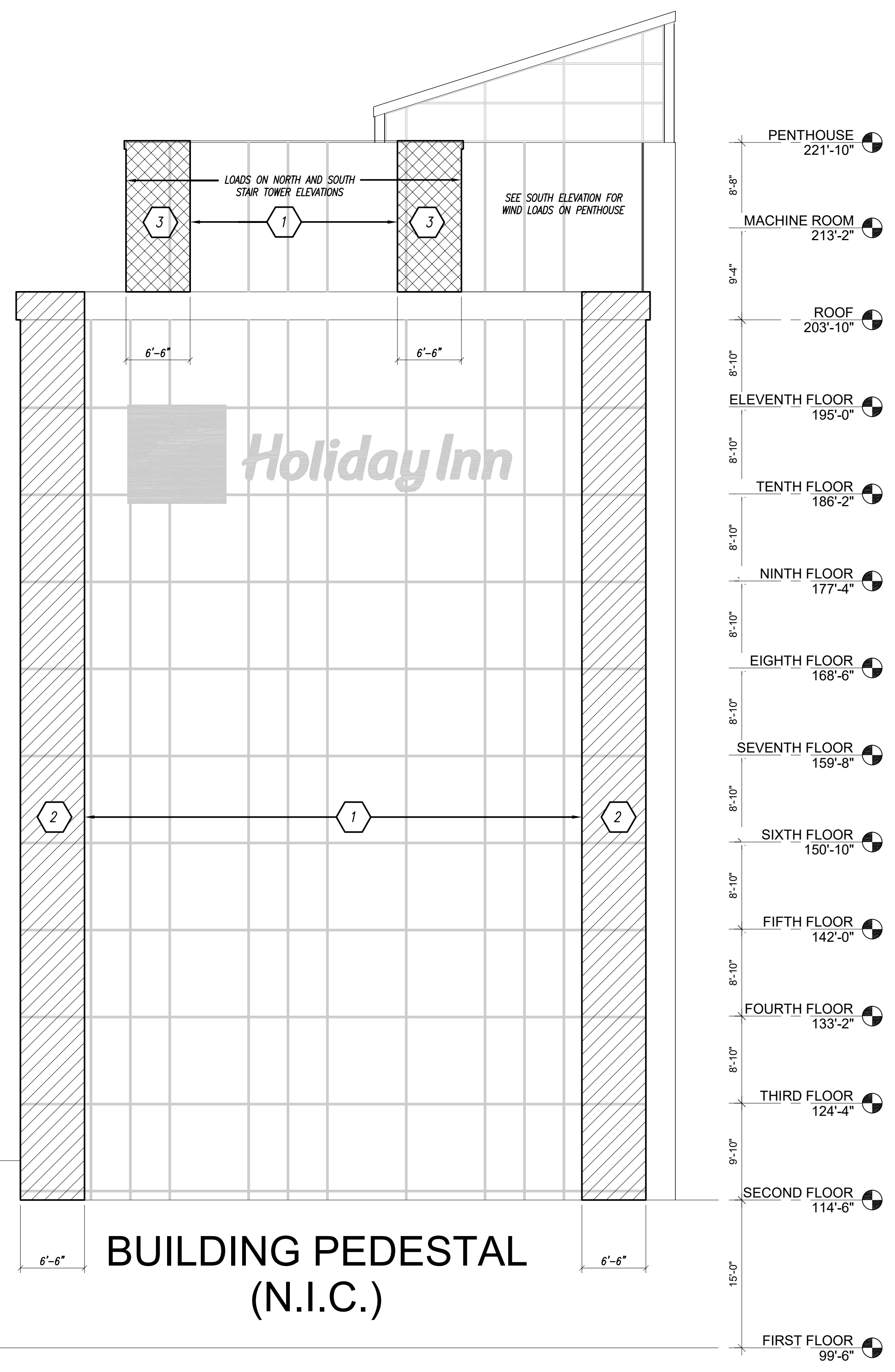
Architect:  
**ARCHETYPE architects**  
 48 Union Wharf Portland, Maine 04101  
 (207) 772-6022 ARCHETYPE@ARCHETYPEPA.COM

Project:  
**Holiday Inn**  
 88 Spring Street  
 Portland, ME

Revisions:

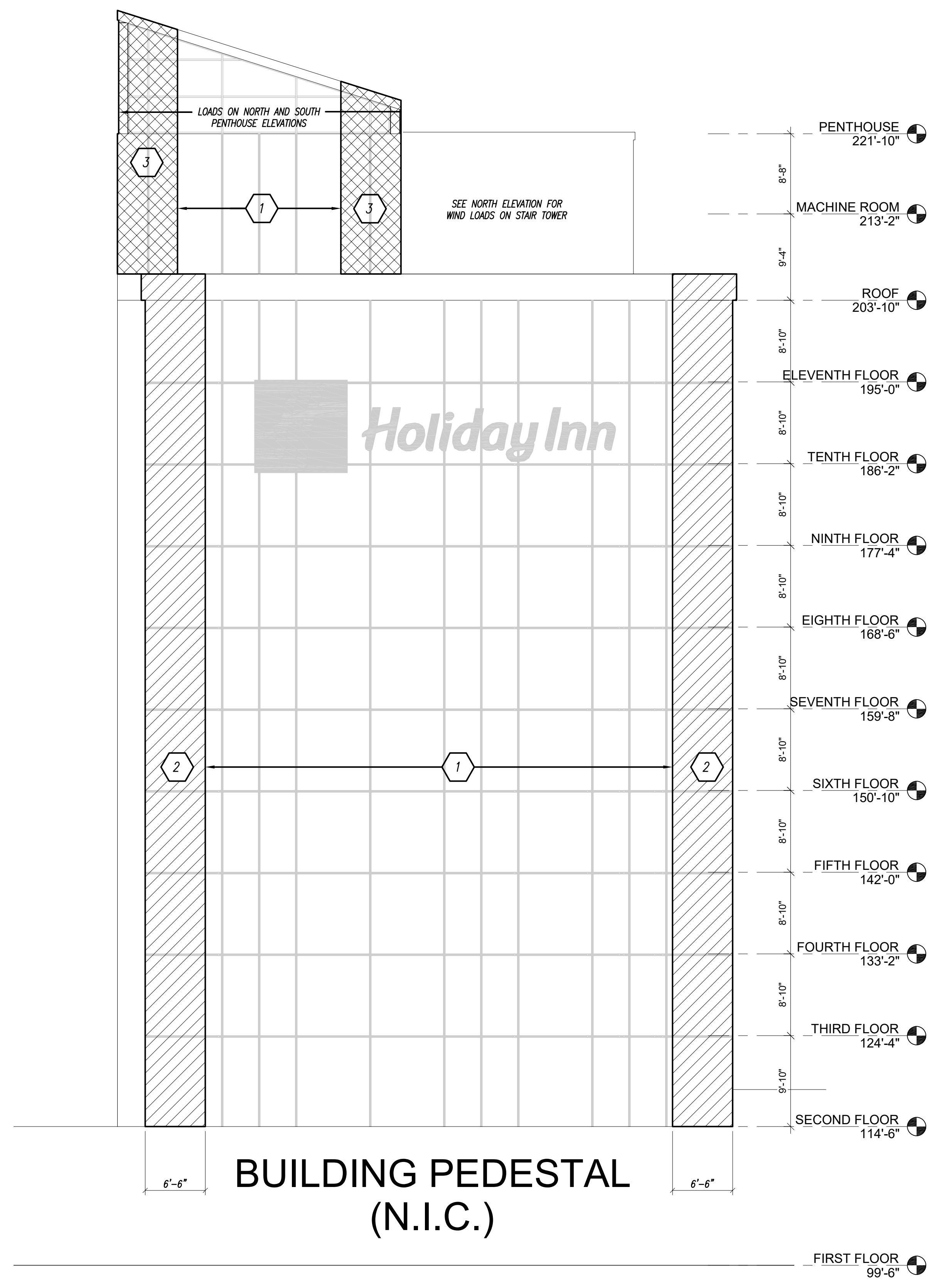
Date: JUNE 30, 2017  
 Scale: NONE  
**DESIGN WIND LOADS NORTH AND SOUTH ELEVATIONS**

**S0.2**



NORTH ELEVATION WIND LOADS

N.T.S.



SOUTH ELEVATION WIND LOADS

N.T.S.

ZONE	DESIGN WIND LOAD
1	37 PSF
2	66 PSF
3	67 PSF