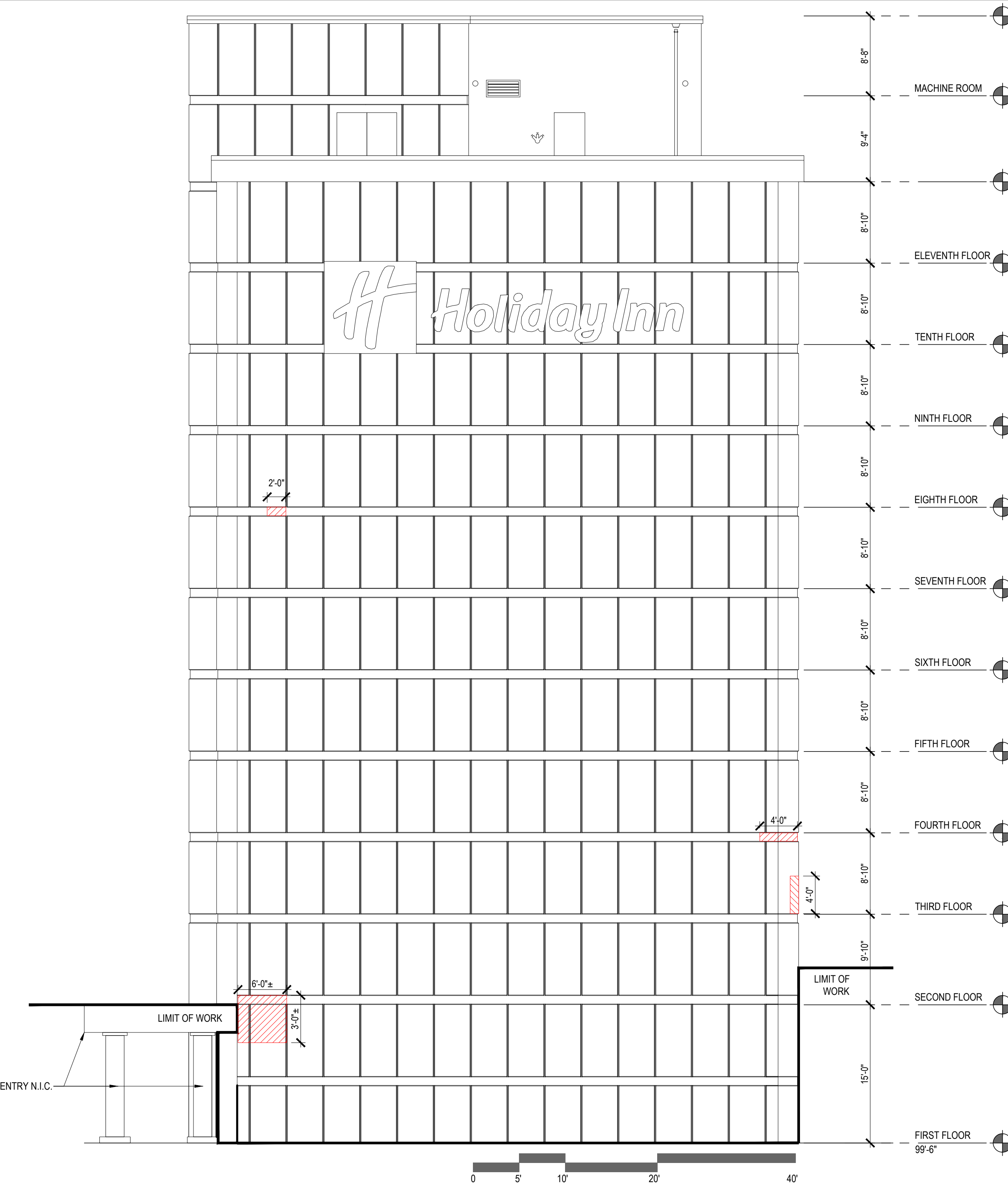
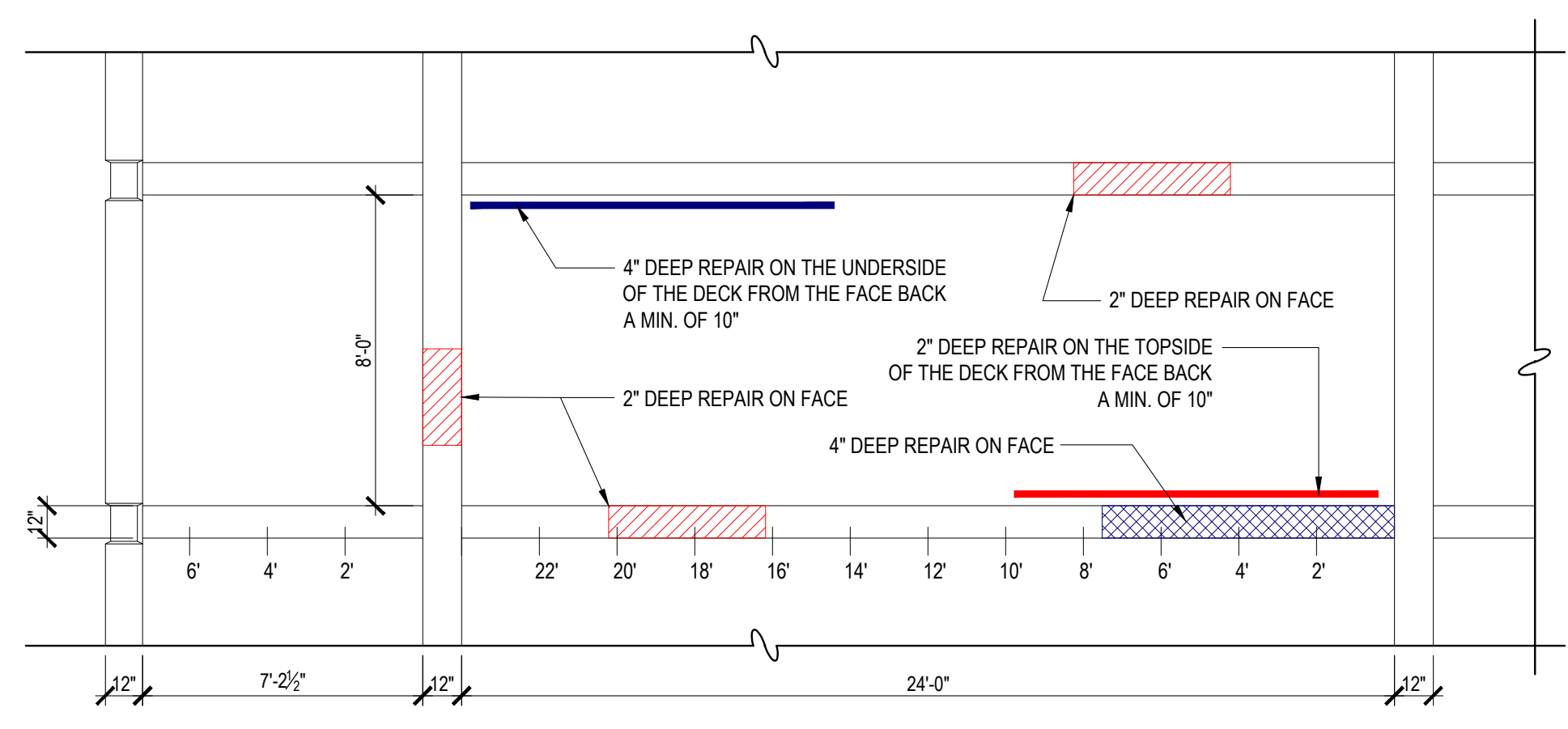




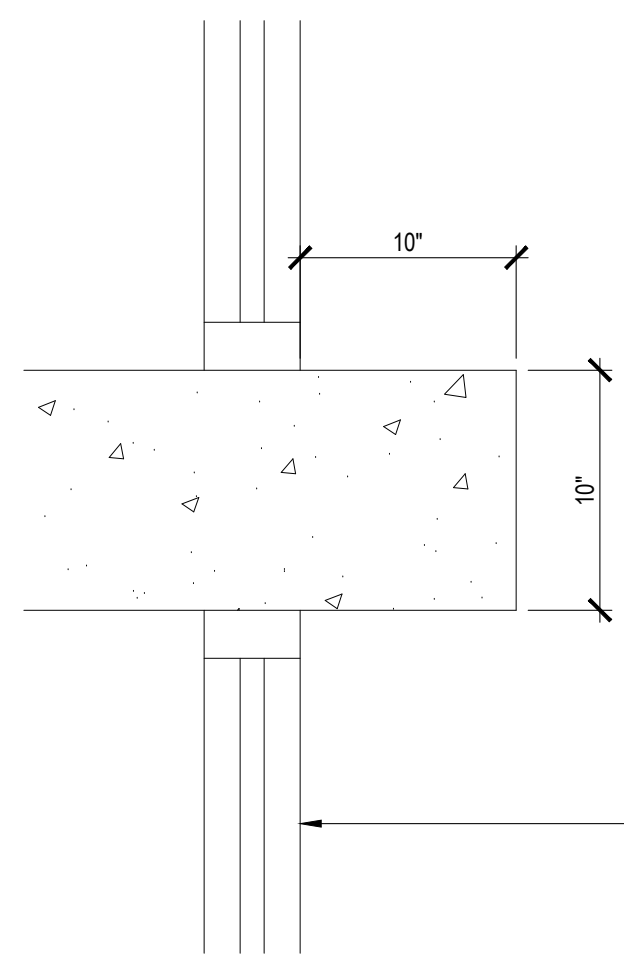
5 CONCRETE REPAIR NORTH ELEVATION
SCALE: 1/8" = 1'-0"



6 CONCRETE REPAIR SOUTH ELEVATION
SCALE: 1/8" = 1'-0"



4 EXPLANATION OF ELEVATION WORK



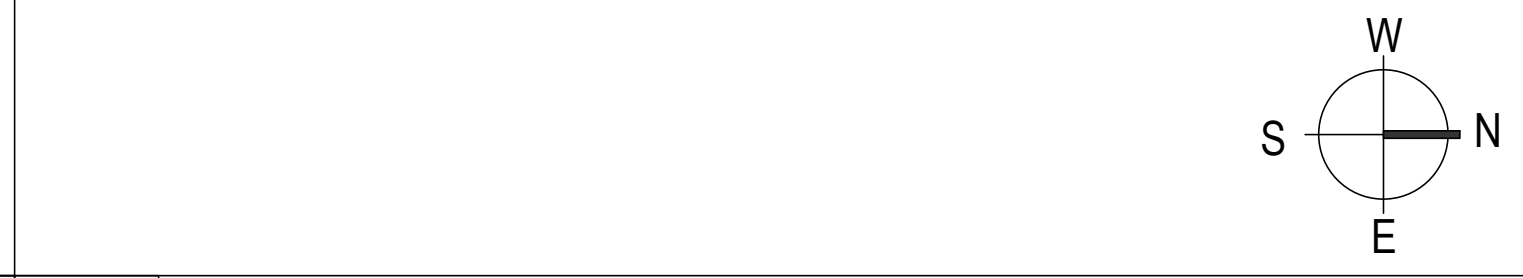
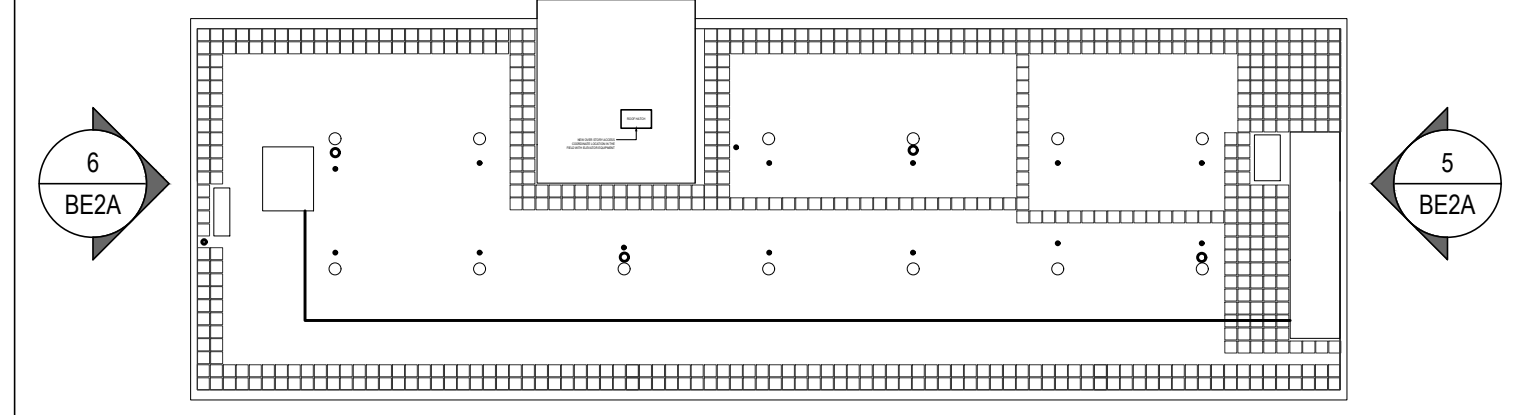
3 TYPICAL LEDGE SECTION EXISTING CONDITION
SCALE: 1 1/2" = 1'-0"

- EXISTING EDGE OF SLAB CONDITION AS SHOWN.
- REMOVE ALL COATINGS AND LOOSE MATERIAL
 - REMOVE AND REPAIR ALL SPALLING AND DETERIORATED CONCRETE AS INDICATED IN THE ELEVATIONS
 - STABILIZE ALL REINFORCING OR REPLACE IN KIND WITH NEW MATERIAL
 - FORM AND PRESSURE INJECT CEMENTITIOUS GROUT INTO ALL DAMAGED AREAS.
 - NOTE THERE IS AN ADDITIONAL INFORMATION IN THIS DRAWING SET TO APPLY SELF LEVELING MATERIAL TO ALL BAYS PRIOR TO CURTAIN WALL INSTALLATION.
 - REVIEW OF MASONRY DOES NOT EXTEND BEYOND THE EXTERIOR FACE OF EXISTING FENESTRATION AT EXTERIOR WALL

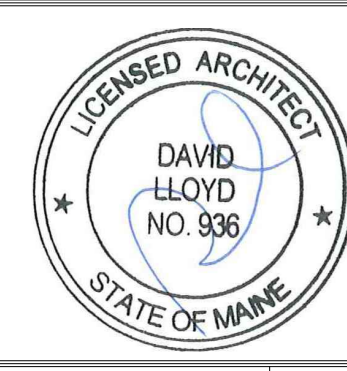
- | | |
|---|---|
| | |
| 4" DEEP MASONRY REPAIR AT HORIZONTAL OR VERTICAL FACE | 2" DEEP MASONRY REPAIR AT HORIZONTAL OR VERTICAL FACE |
| | |
| 4" DEEP MASONRY REPAIR AT ELEVATION | 2" DEEP MASONRY REPAIR AT ELEVATION |

NOTE: REPAIR AREAS REPRESENTED ON THE ELEVATIONS ARE APPROXIMATE AND DETERMINED BY VISUAL OBSERVATIONS FROM GROUND

2 REPAIR LEGEND
SCALE: NTS



1 KEY PLAN
SCALE: 1/32" = 1'-0"



Prepared For:
LAFAYETTE PROPERTIES, LLC
155 LITTLEFIELD STREET
BANGOR, MAINE 04401

Consultant:
Building Envelope Specialists
P.O. BOX 23897, SOUTH PORTLAND, MAINE 04116
PHONE: 207-800-0086

Architect:
ARCHETYPE architects
48 Union Wharf Portland, Maine 04101
(207) 772-6022 ARCHETYPE@ARCHETYPEPA.COM

Project:
Holiday Inn
88 Spring Street
Portland, ME

Revisions:
MARCH 2017
JULY 10 2017
95% CLIENT REVIEW
CLIENT FINAL REVIEW

Date: June 30, 2017
Scale: As indicated
MASONRY REPAIR

