

Prepared For:  
**LAFAYETTE PROPERTIES, LLC**  
 155 LITTLEFIELD STREET  
 BANGOR, MAINE 04401

Consultant:  
**Building Envelope Specialists**  
 P.O. BOX 23897, SOUTH PORTLAND, MAINE 04115  
 PHONE: 207-800-0086

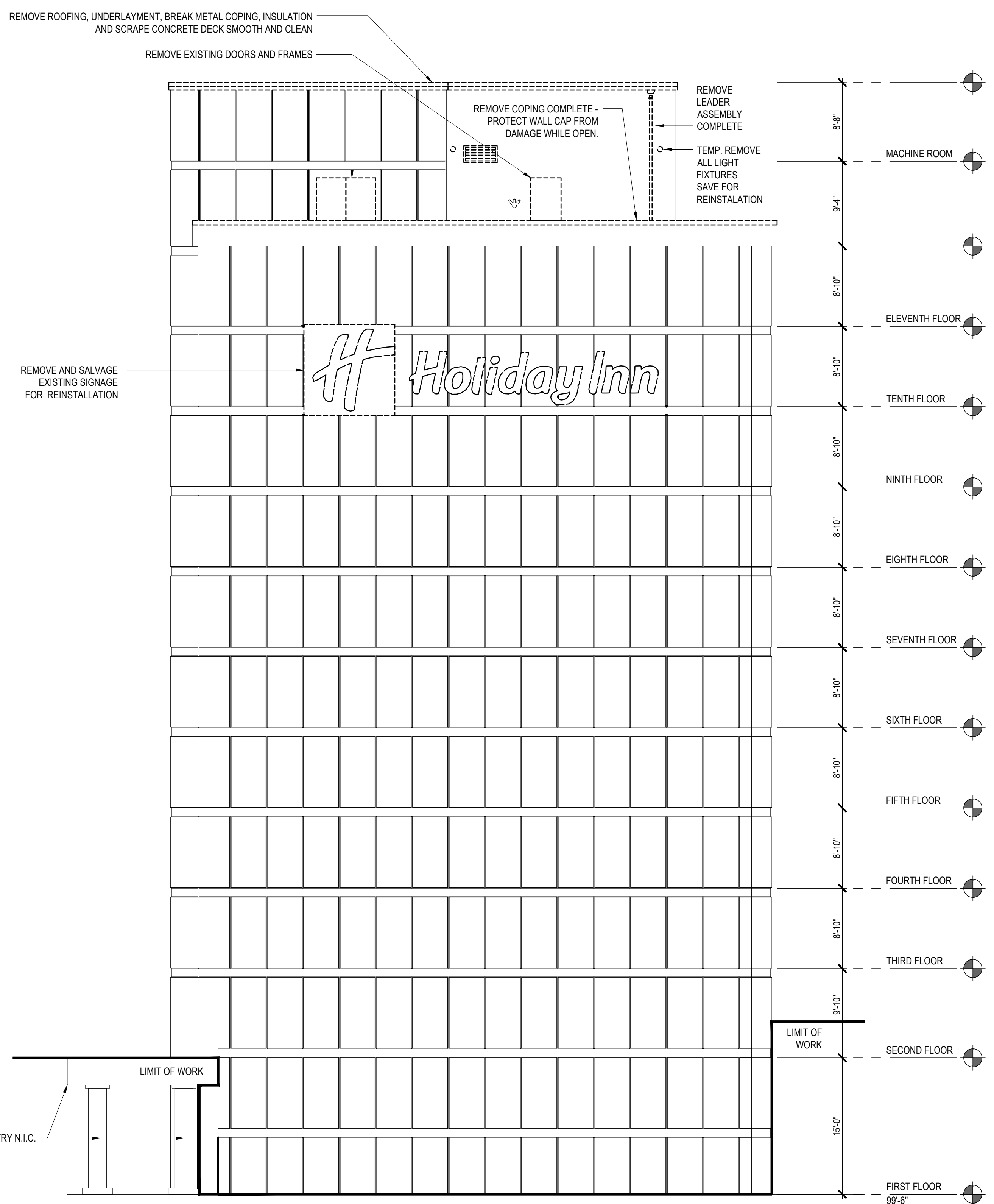
Architect:  
**ARCHETYPE architects**  
 48 Union Wharf Portland, Maine 04101  
 (207) 772-6022 ARCHETYPE@ARCHETYPEPA.COM

Project:  
**Holiday Inn**  
 88 Spring Street  
 Portland, ME

Revisions:  
 MARCH 2017 95% CLIENT REVIEW  
 JULY 10 2017 CLIENT FINAL REVIEW

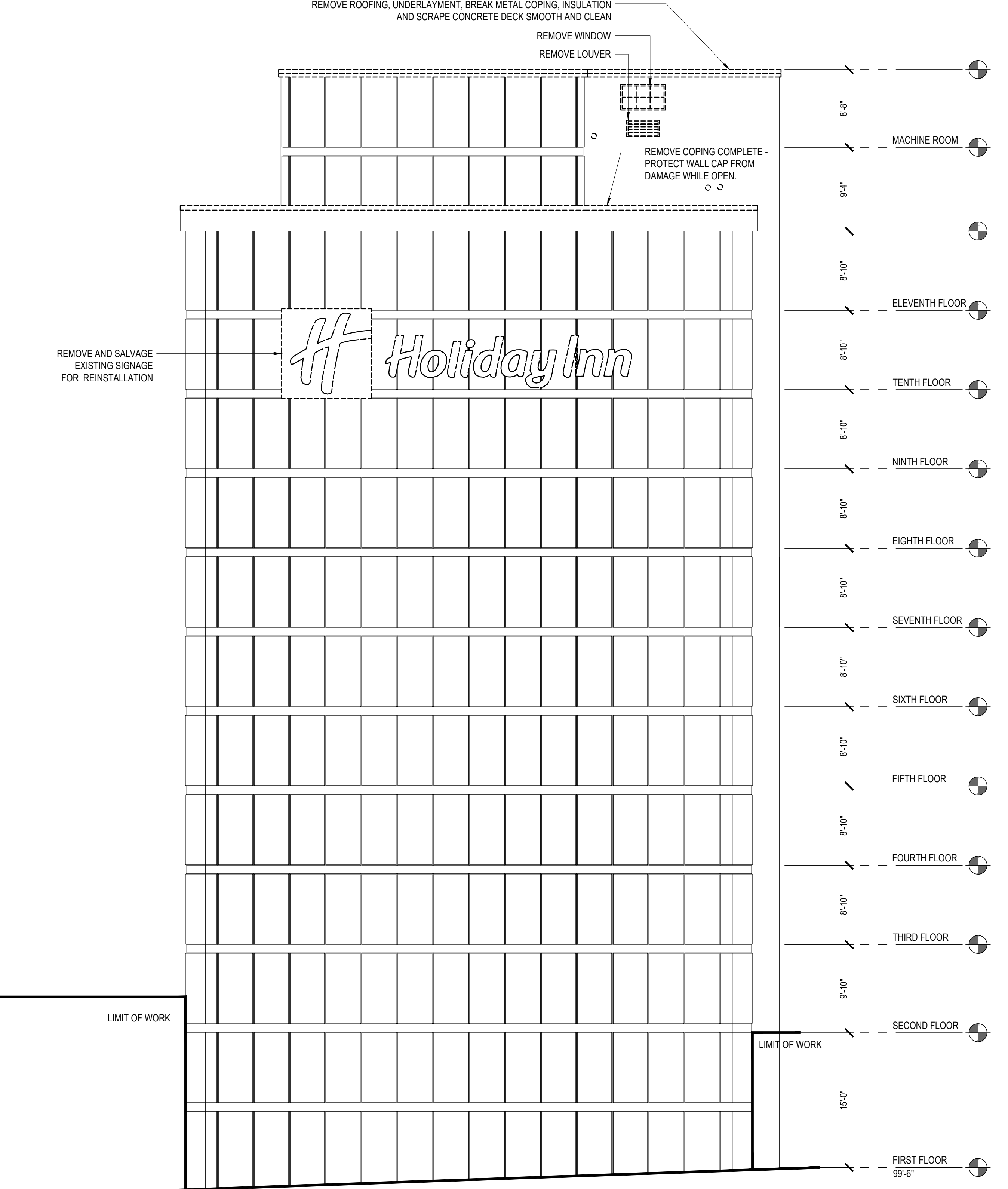
Date: June 30, 2017  
 Scale: As indicated  
**REMOVALS ELEVATION, NOTES AND KEY PLAN**

**BE2**



**3** REMOVALS SOUTH ELEVATION

SCALE: 1/8" = 1'-0"



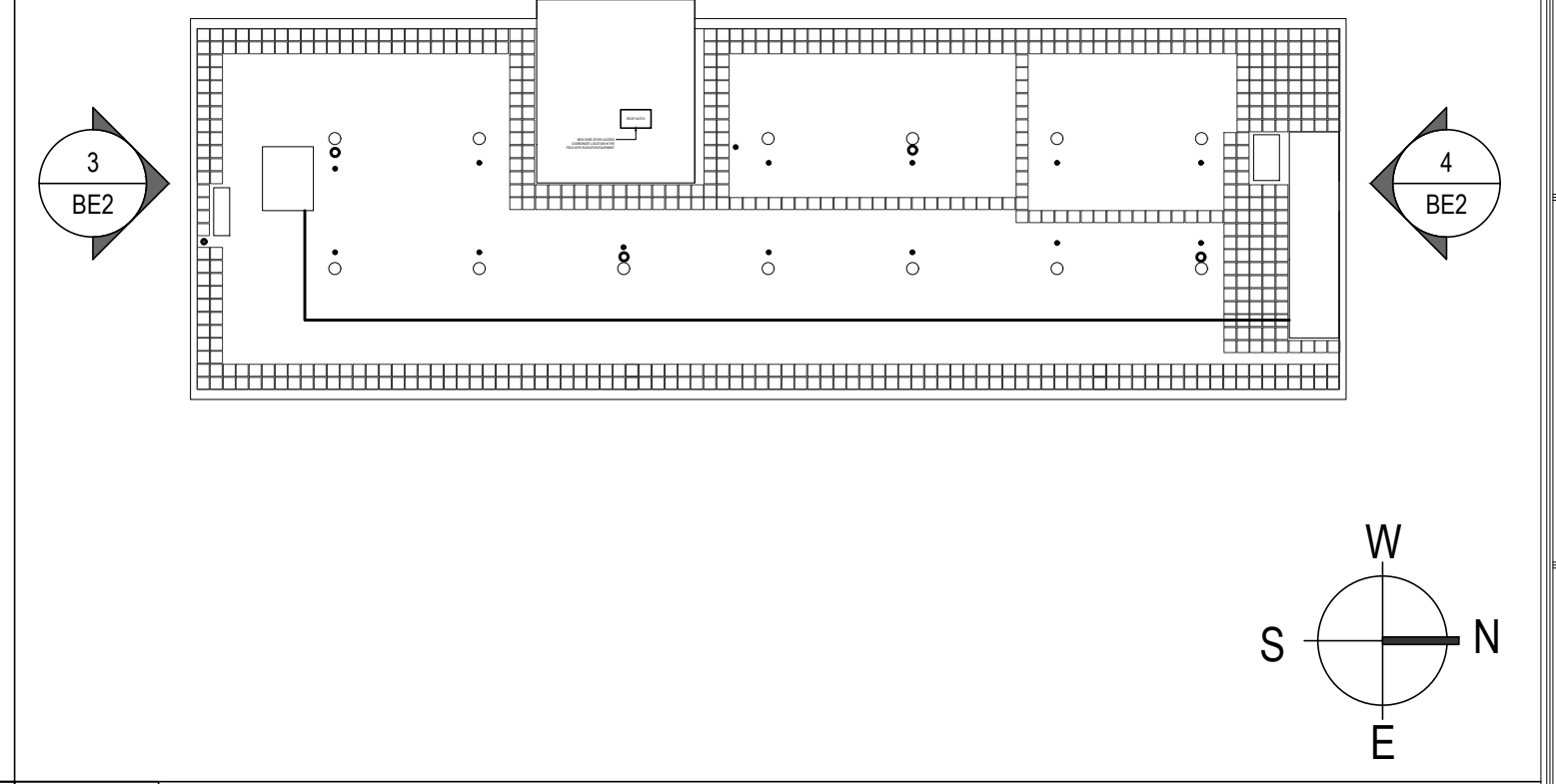
**4** REMOVALS NORTH ELEVATION

SCALE: 1/8" = 1'-0"

**REMOVALS NOTES**

1. REMOVE ALL EXISTING WINDOWS IN THE MAIN BUILDING PER THE DRAWINGS, COMPLETE.
2. REMOVE THE INFILL WALLS BETWEEN WINDOWS PER THE DRAWINGS, COMPLETE.
3. REMOVE THE ROOFING AND COPING OVER THE ELEVATOR MACHINE ROOM, COMPLETE.
4. REMOVE THE MAIN PARAPET COPING, COMPLETE.
5. REMOVE IN A TEMPORARY FASHION AND SAVE TO REINSTALL LIGHTING AND CAMERA ELEMENTS AT THE ROOF AND EXTERIOR ELEVATIONS COORDINATE WITH THE BUILDING OWNER.
6. REMOVE THE ELEVATOR MACHINE ROOM DOORS, FRAME AND THRESHOLD AT THE ROOF LEVEL.
7. REMOVE THE STAIR ACCESS DOOR, FRAME AND THRESHOLD AT THE ROOF LEVEL.
8. REMOVE MISCELLANEOUS UNUSED BRACKETS, BRACES AND CLEATS FROM THE BUILDING.
9. SAFE ALL ELECTRICAL PRIOR TO REMOVAL OF ANY ITEMS.
10. REMOVE THE MAIN SIGNS ON THE NORTH AND SOUTH ELEVATIONS, SAVE FOR REINSTALLATION.
11. REMOVE MAIN ROOF, ROOF SYSTEM TO THE CONCRETE DECK.
12. REMOVE STAIR ROOF, ROOF SYSTEM TO THE CONCRETE DECK.
13. REMOVE ALL BALLAST AND QUANTIFY THE AMOUNT FOR THE OWNER.
14. REMOVE ALL VARIOUS MAIN ROOF DEBRIS THAT IS NOT PART OF THIS PROJECT.
15. REMOVE THE ELEVATOR OVER STORY ROOF COMPLETE TO THE CONCRETE DECK.

**2** REMOVALS NOTES



**1** KEY PLAN

SCALE: 1/32" = 1'-0"