

Prepared For:  
**LAFAYETTE PROPERTIES, LLC**  
 155 LITTLEFIELD STREET  
 BANGOR, MAINE 04401

Consultant:  
**Building Envelope Specialists**  
 P.O. BOX 23497, SOUTH PORTLAND, MAINE 04115  
 PHONE: 207-800-0086

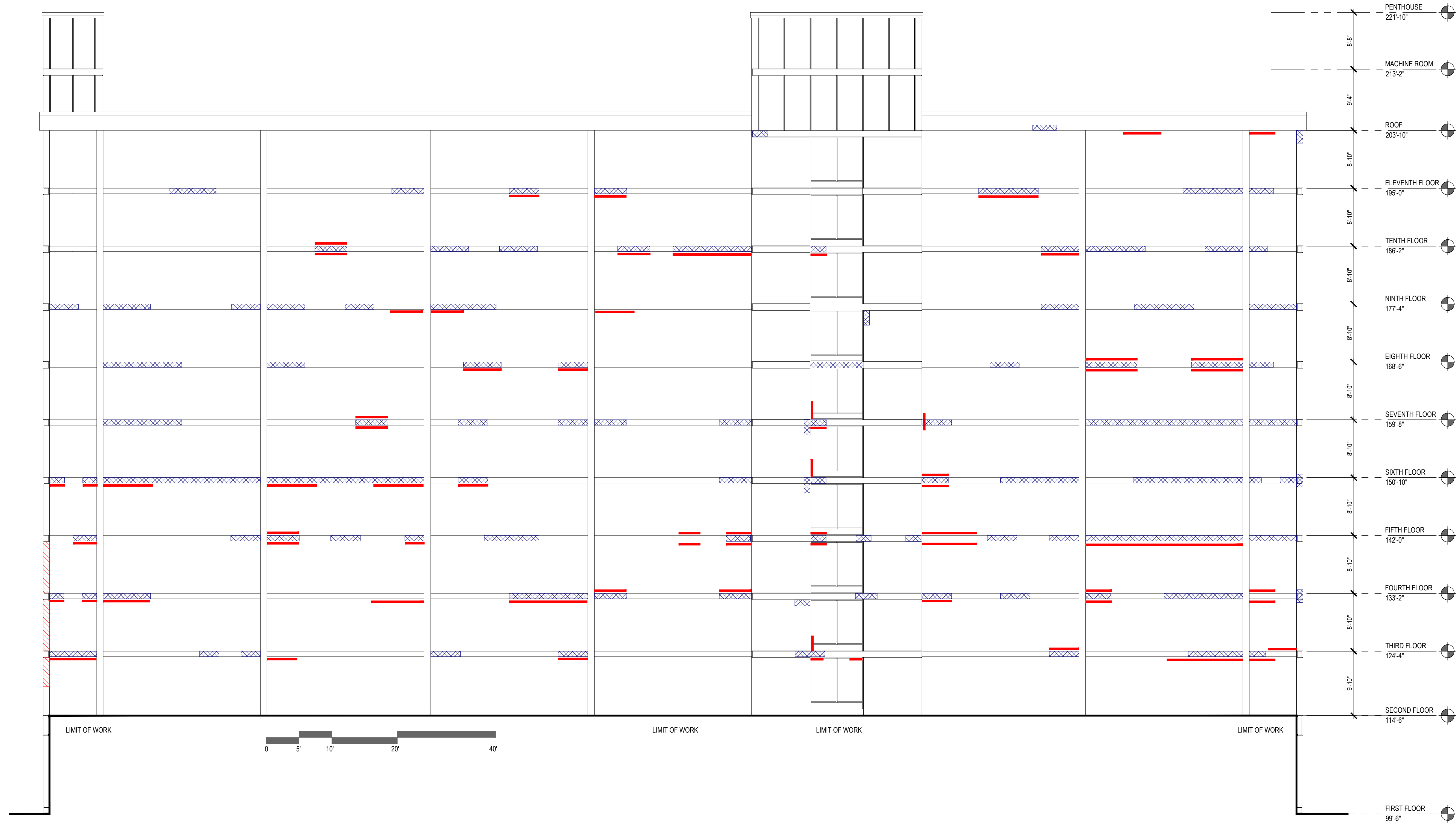
Architect:  
**ARCHETYPE architects**  
 48 Union Wharf Portland, Maine 04101  
 (207) 772-6022 ARCHETYPE@ARCHETYPEPA.COM

Project:  
**Holiday Inn**  
 88 Spring Street  
 Portland, ME

Revisions:  
 MARCH 2017 95% CLIENT REVIEW  
 JULY 10 2017 CLIENT FINAL REVIEW

Date: June 30, 2017  
 Scale: As indicated  
**MASONRY REPAIR**

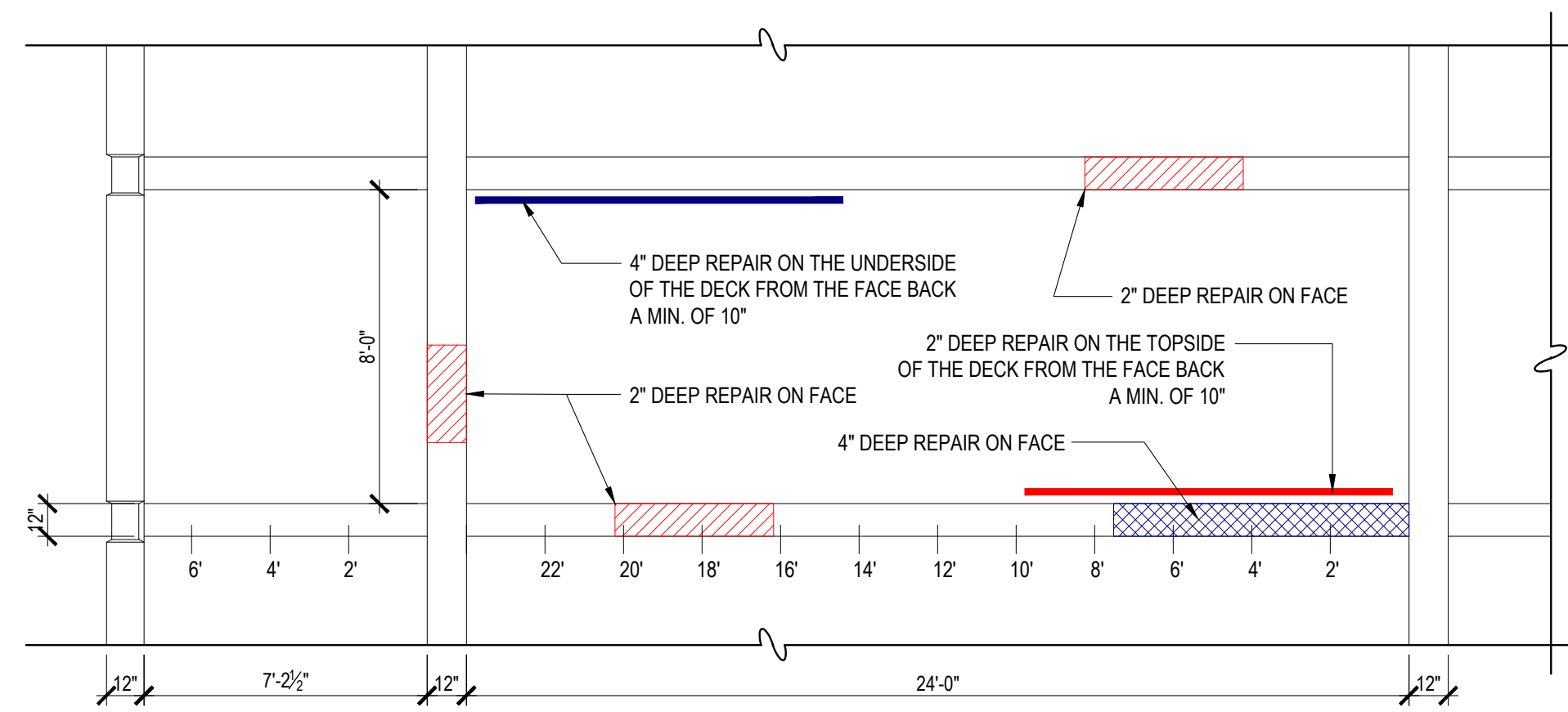
**BE1A**



**5**

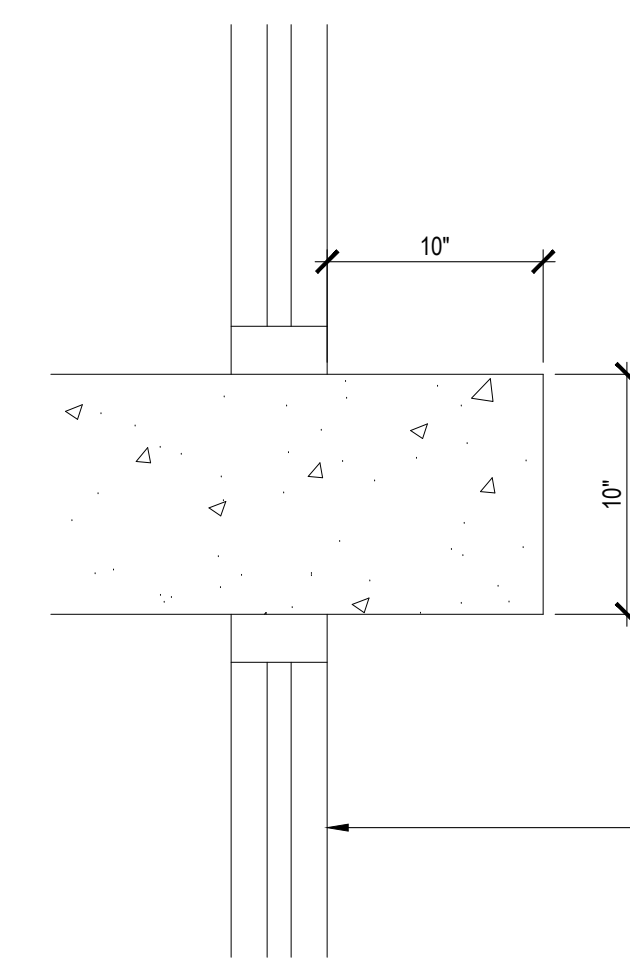
**CONCRETE REPAIR WEST ELEVATION**

SCALE: 1/8" = 1'-0"



**4**

**EXPLANATION OF ELEVATION WORK**



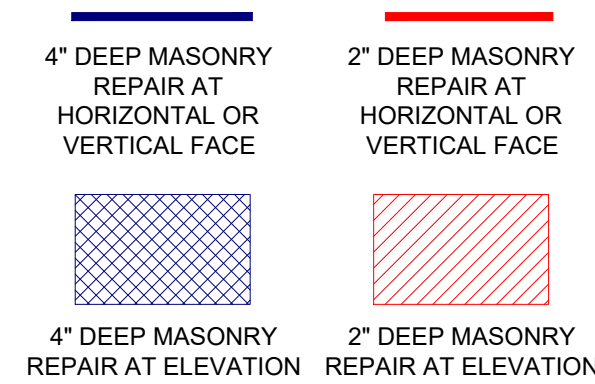
**3**

**TYPICAL LEDGE SECTION EXISTING CONDITION**

SCALE: 1 1/2" = 1'-0"

- EXISTING EDGE OF SLAB CONDITION AS SHOWN.
- REMOVE ALL COATINGS AND LOOSE MATERIAL
  - REMOVE AND REPAIR ALL SPALLING AND DETERIORATED CONCRETE AS INDICATED IN THE ELEVATIONS
  - STABILIZE ALL REINFORCING OR REPLACE IN KIND WITH NEW MATERIAL
  - FORM AND PRESSURE INJECT CEMENTITIOUS GROUT INTO ALL DAMAGED AREAS.
  - NOTE THERE IS AN ADDITIONAL INFORMATION IN THIS DRAWING SET TO APPLY SELF LEVELING MATERIAL TO ALL BAYS PRIOR TO CURTAIN WALL INSTALLATION.
  - REVIEW OF MASONRY DOES NOT EXTEND BEYOND THE EXTERIOR FACE OF EXISTING FENESTRATION AT EXTERIOR WALL

EXISTING FENESTRATION TO BE REMOVED.

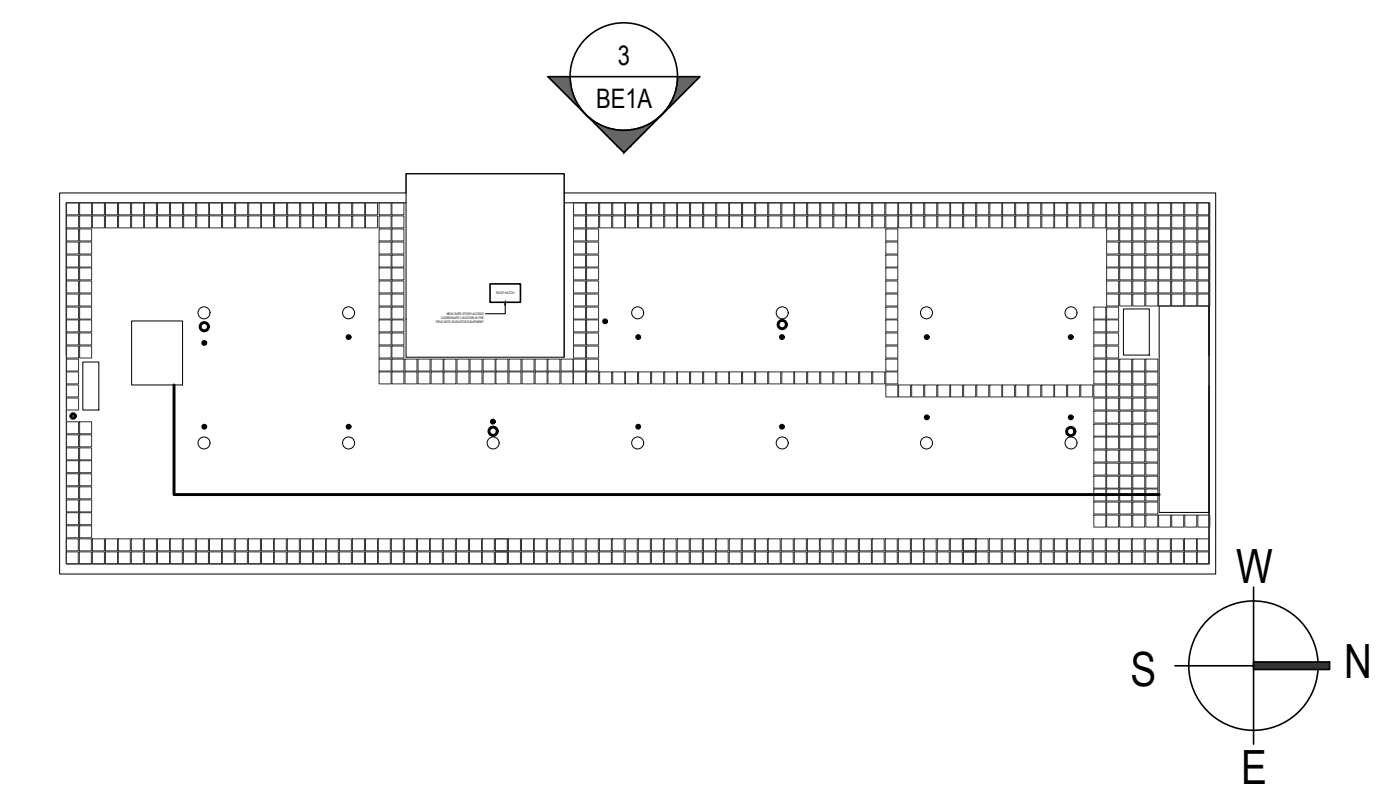


**NOTE: REPAIR AREAS REPRESENTED ON THE ELEVATIONS ARE APPROXIMATE AND DETERMINED BY VISUAL OBSERVATIONS FROM GROUND**

**2**

**REPAIR LEGEND**

SCALE: NTS



**1**

**KEY PLAN**

SCALE: 1/32" = 1'-0"