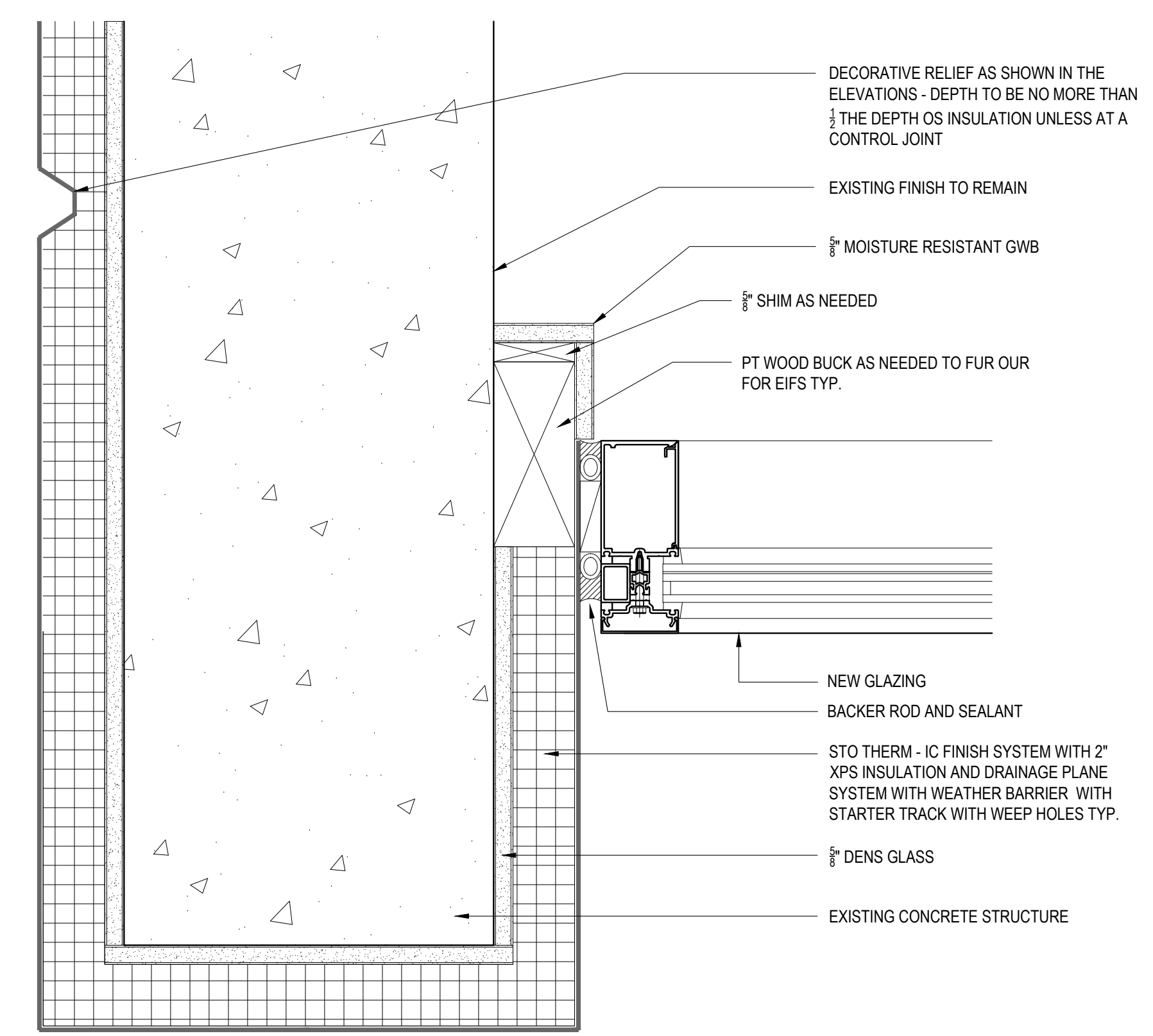
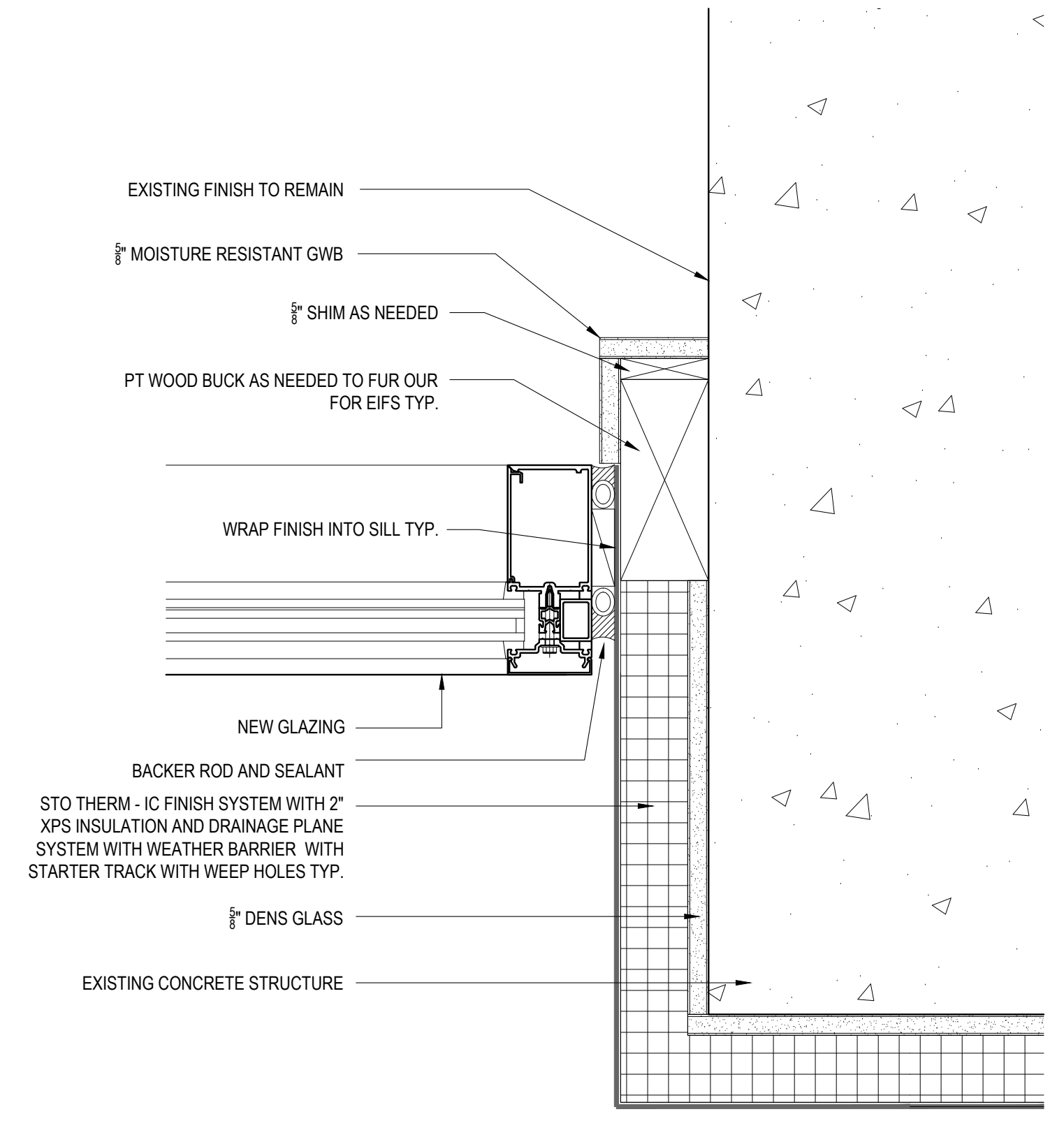


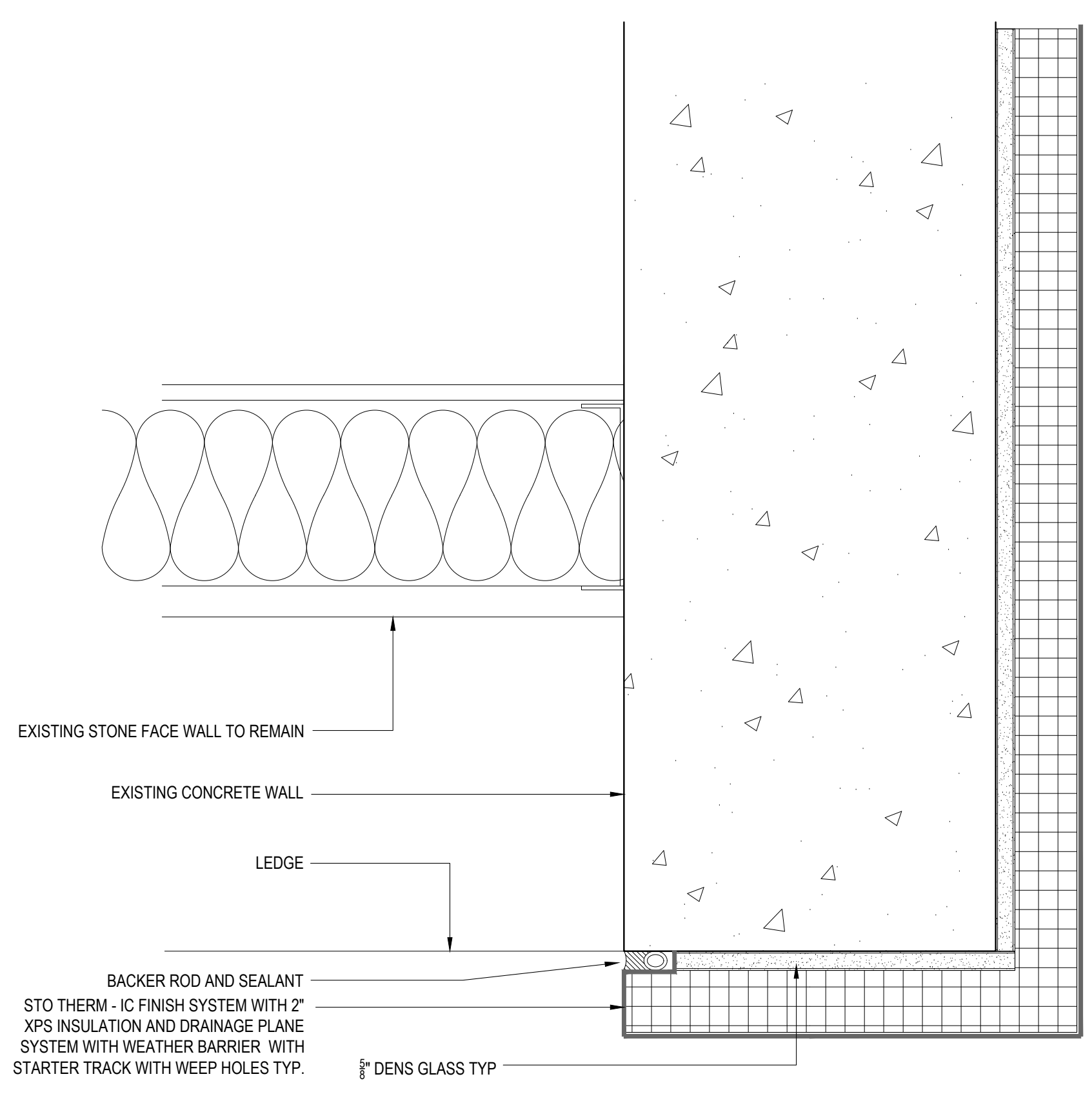
**6** WINDOW - EIFS DETAIL  
SCALE: 3" = 1'-0"



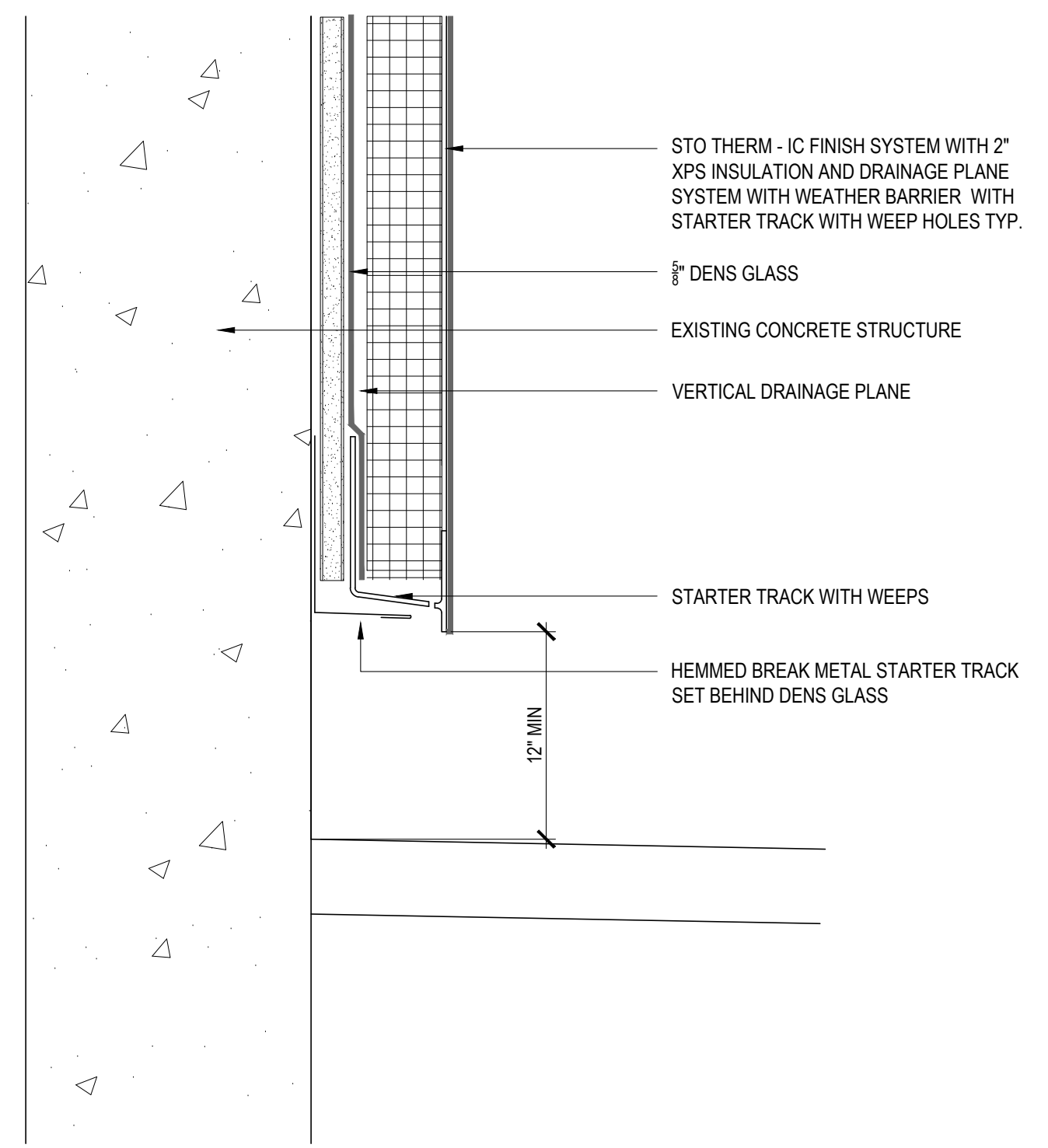
**5** WINDOW - EIFS EXTERIOR CORNER DETAIL  
SCALE: 3" = 1'-0"



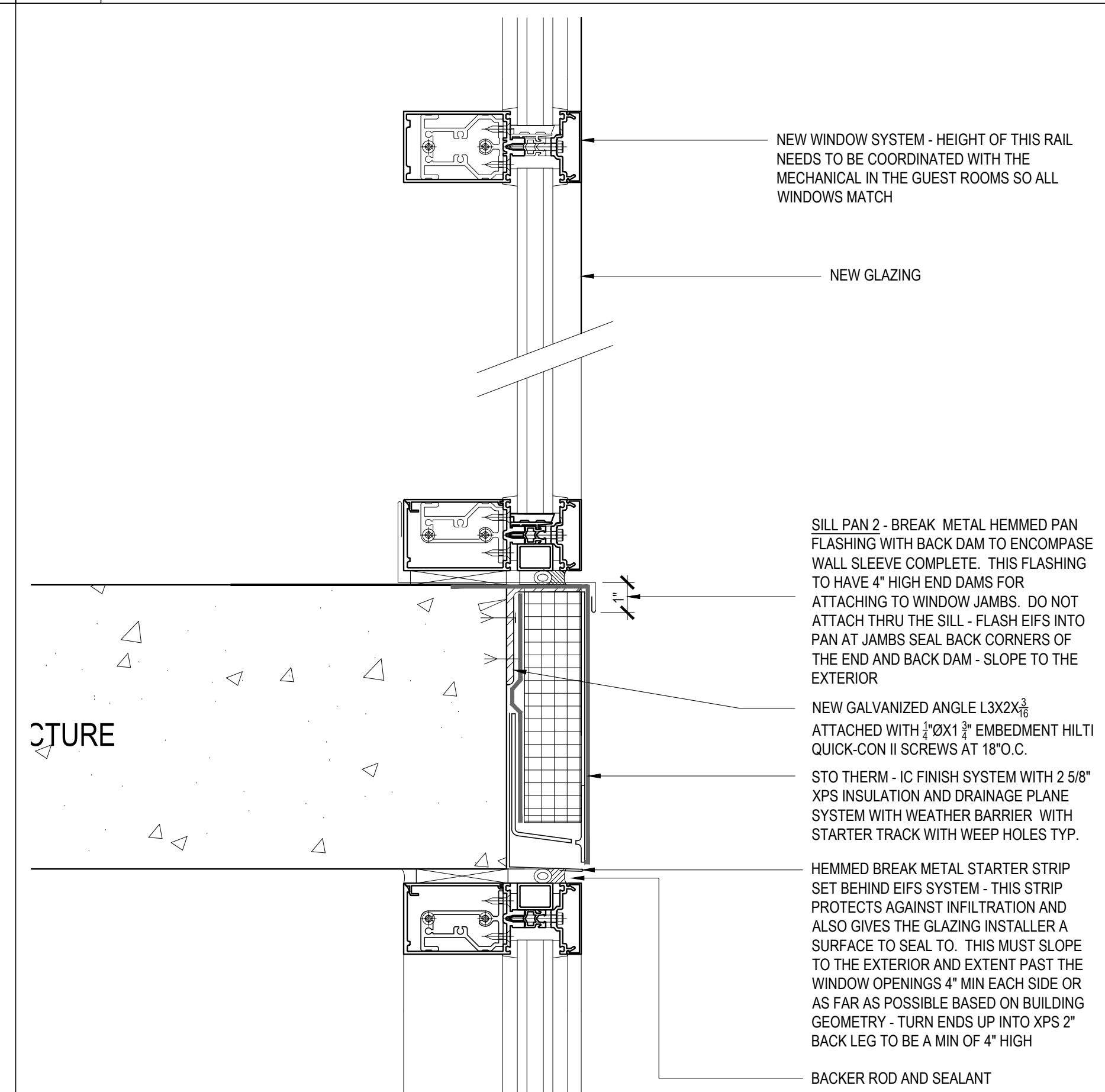
**4** WINDOW - EIFS EXTERIOR INSIDE CORNER DETAIL  
SCALE: 3" = 1'-0"



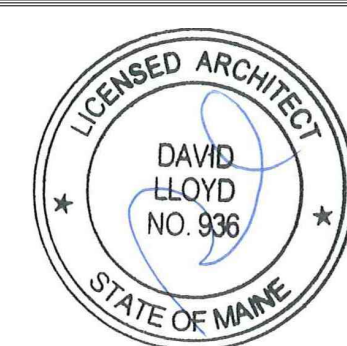
**3** EIFS CORNER TERMINATION DETAIL  
SCALE: 3" = 1'-0"



**2** EIFS BASE OF WALL DETAIL  
SCALE: 3" = 1'-0"



**1** WINDOW EIFS SILL AND HEAD DETAIL  
SCALE: 3" = 1'-0"



Prepared For:  
**LAFAYETTE PROPERTIES, LLC**  
155 LITTLEFIELD STREET  
BANGOR, MAINE 04401

Consultant:  
**Building Envelope Specialists**  
P.O. BOX 23497, SOUTH PORTLAND, MAINE 04114  
PHONE: 207-800-0986

Architect:  
**ARCHETYPE architects**  
48 Union Wharf Portland, Maine 04101  
(207) 772-6022 ARCHETYPE@ARCHETYPEPA.COM

Project:  
**Holiday Inn**  
88 Spring Street  
Portland, ME

Revisions:  
MARCH 2017 95% CLIENT REVIEW  
JULY 10 2017 CLIENT FINAL REVIEW

Date: June 30, 2017  
Scale: As indicated  
**EIFS AND WINDOW DETAILS**

**BE10**