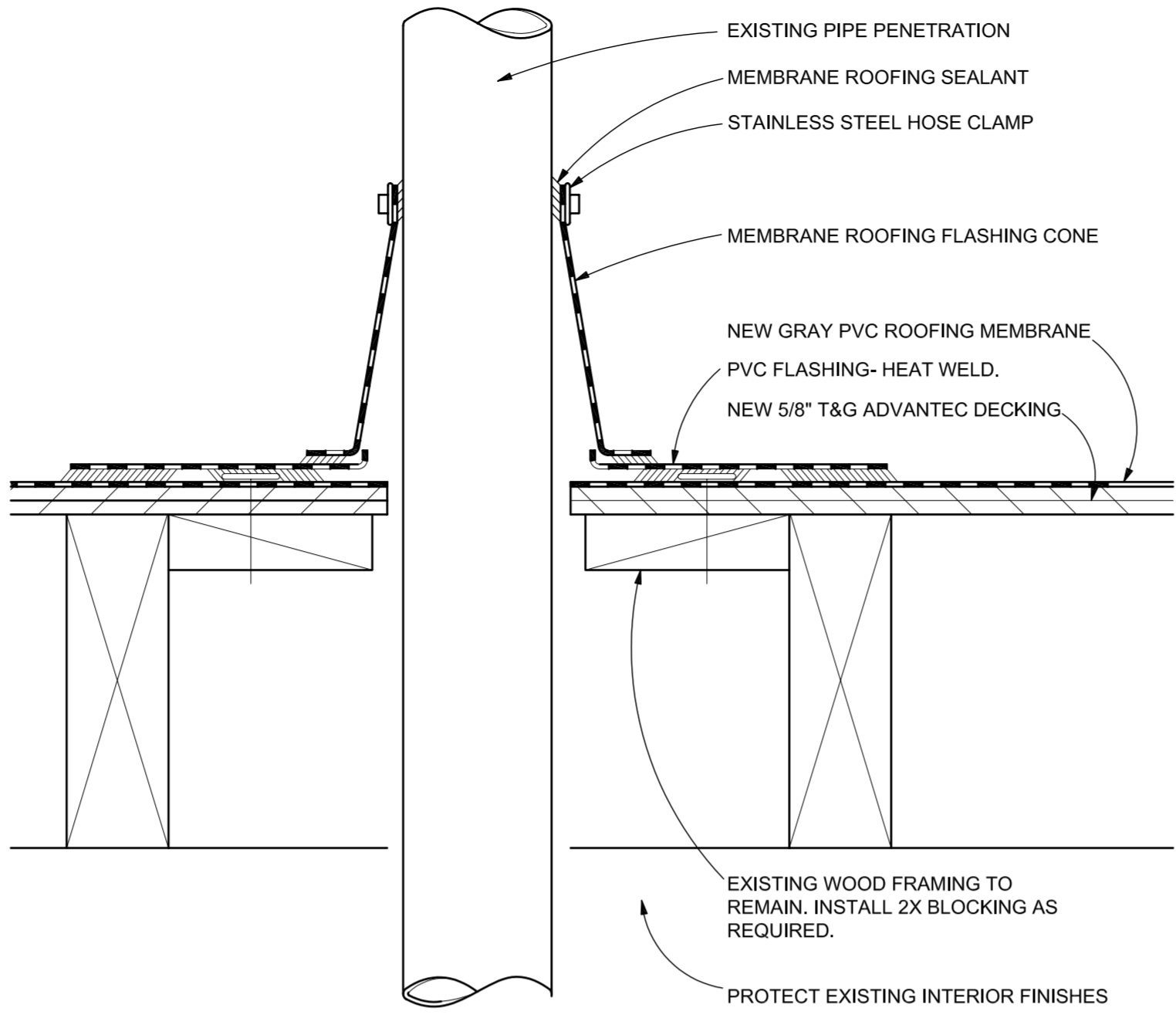
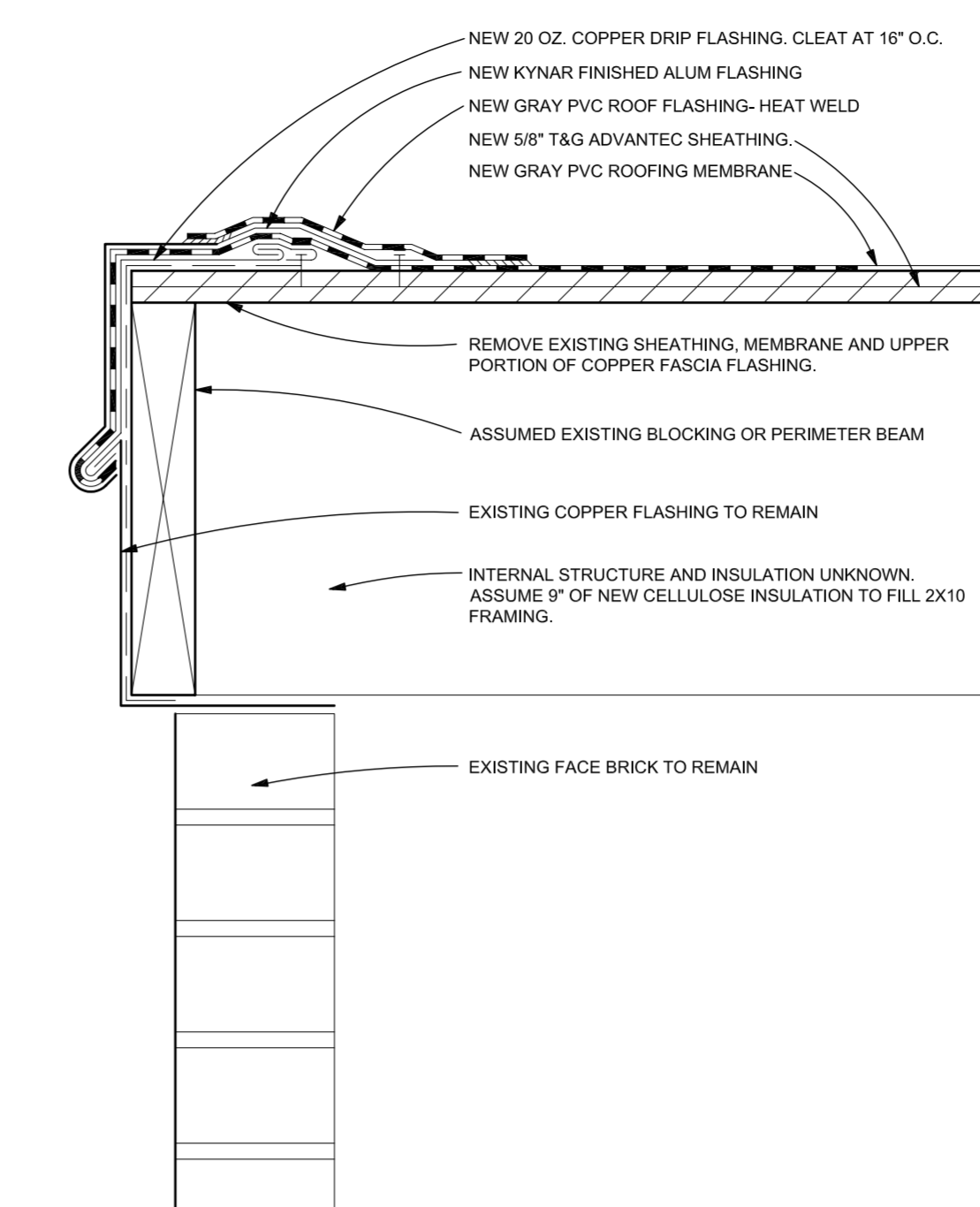


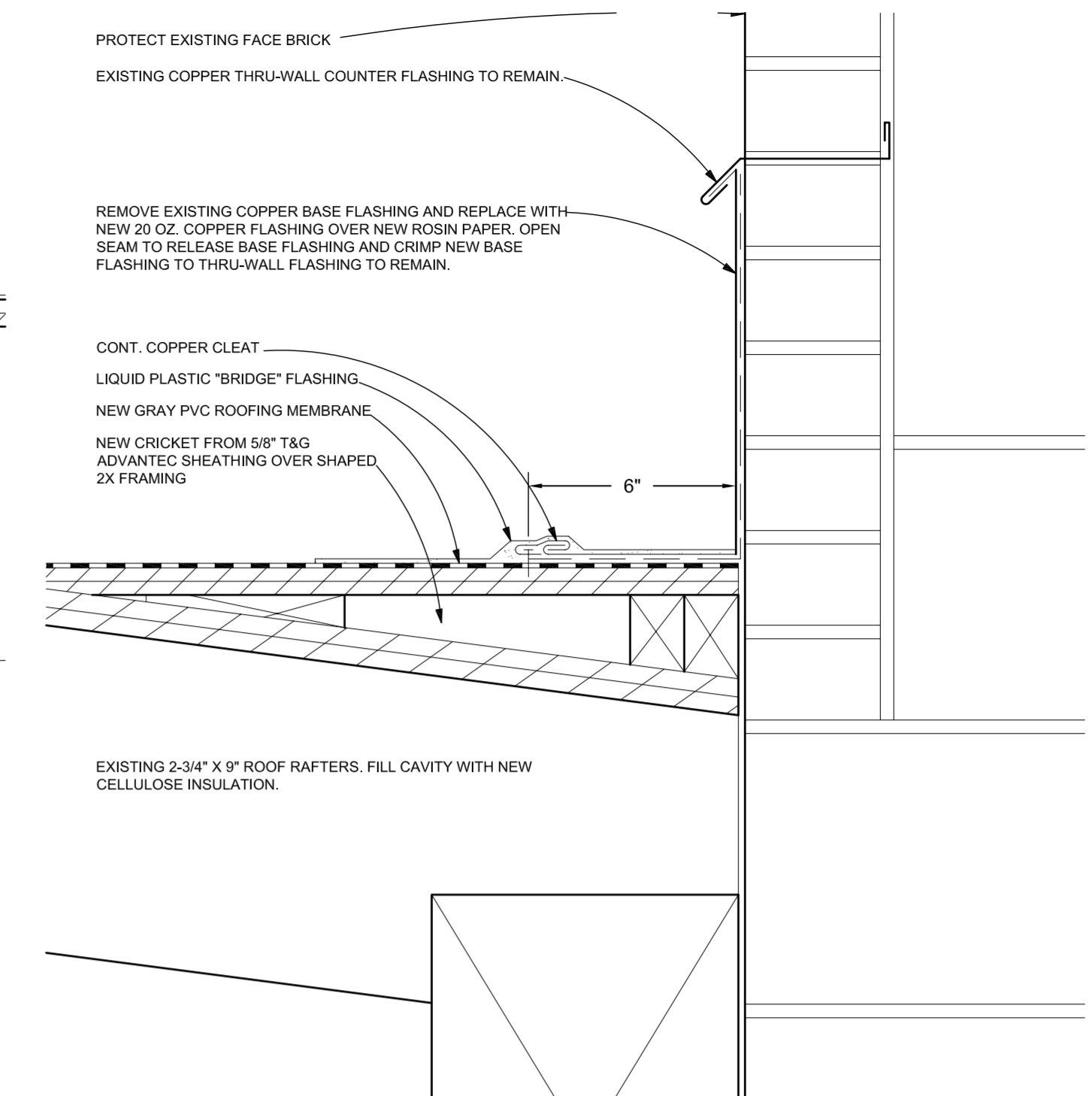
1 SECTION AT ROOF DRAIN
A-5 3" = 1'-0"



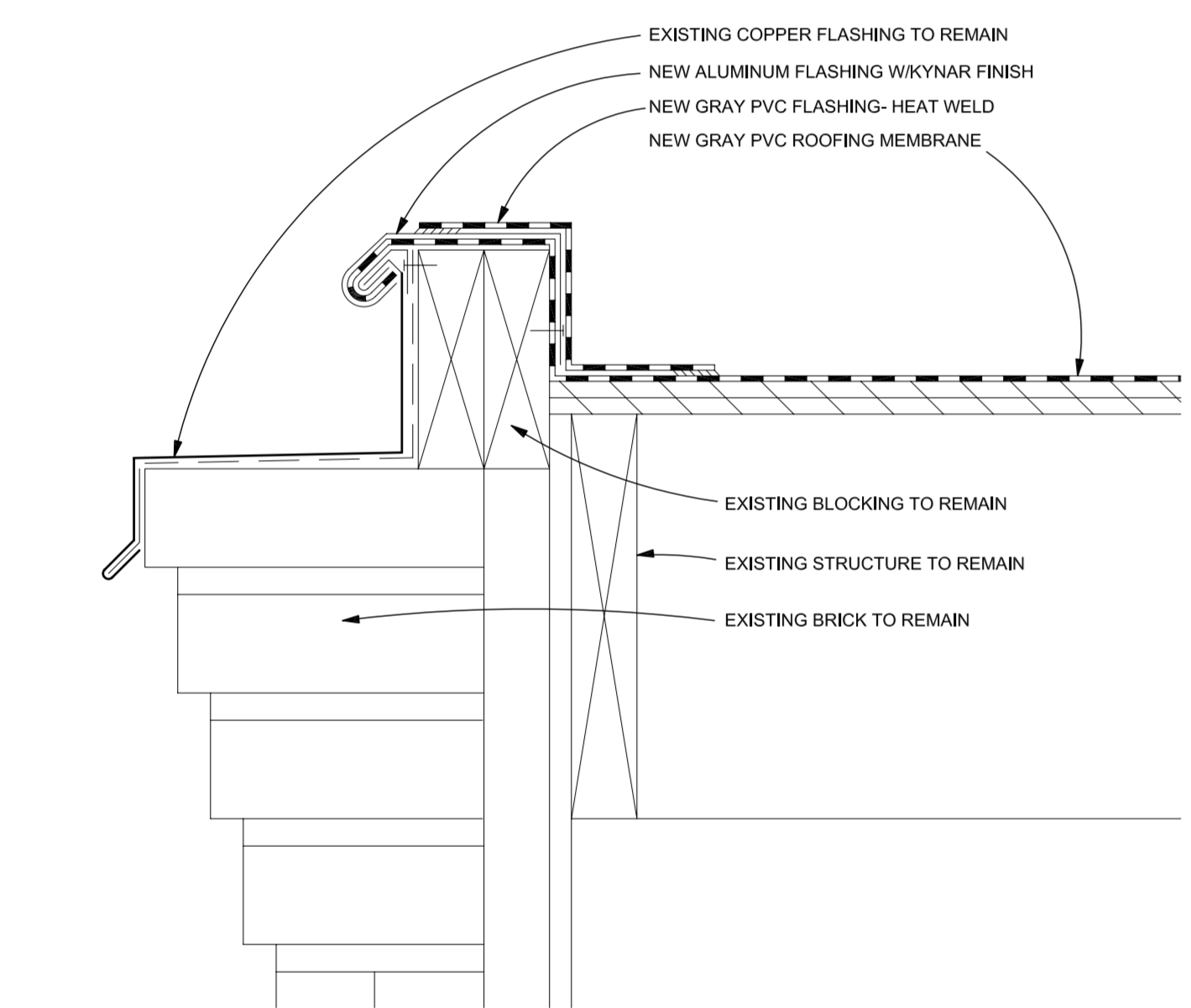
2 SECTION ROOF PENETRATION
A-5 3" = 1'-0"



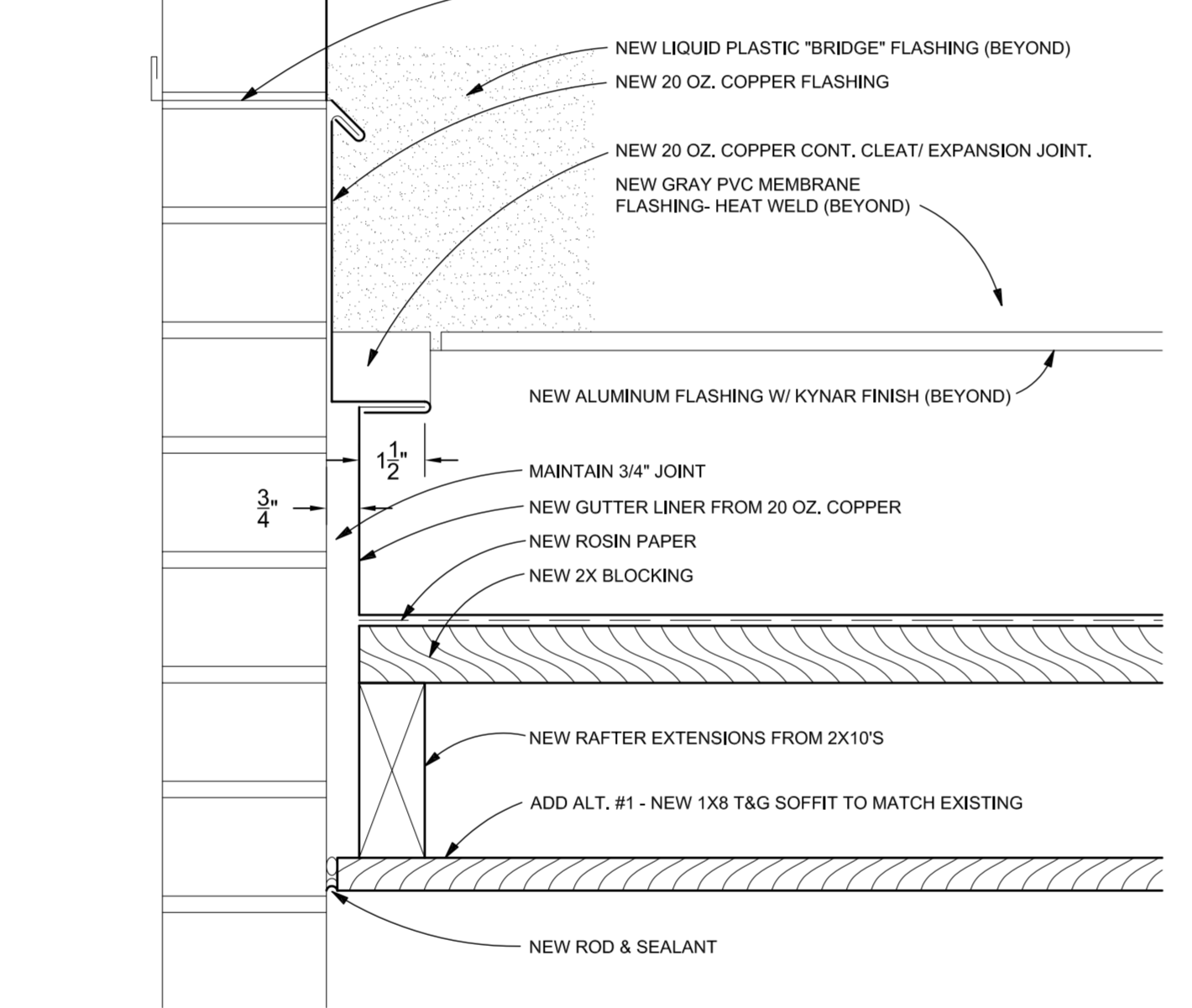
3 SECTION AT ELEVATOR TOWER
A-5 3" = 1'-0"



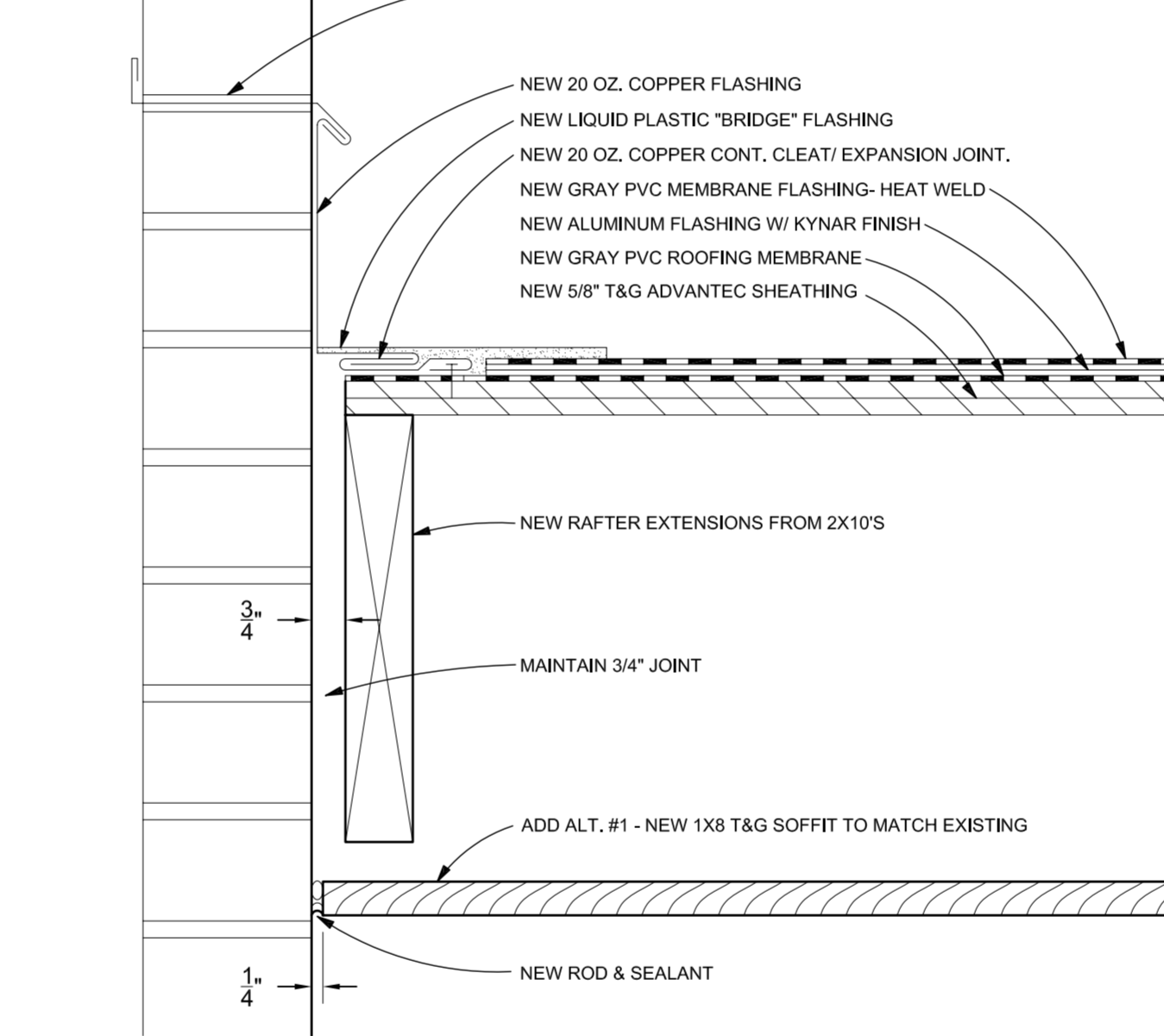
4 SECTION AT ELEVATOR TOWER BASE
A-5 3" = 1'-0"



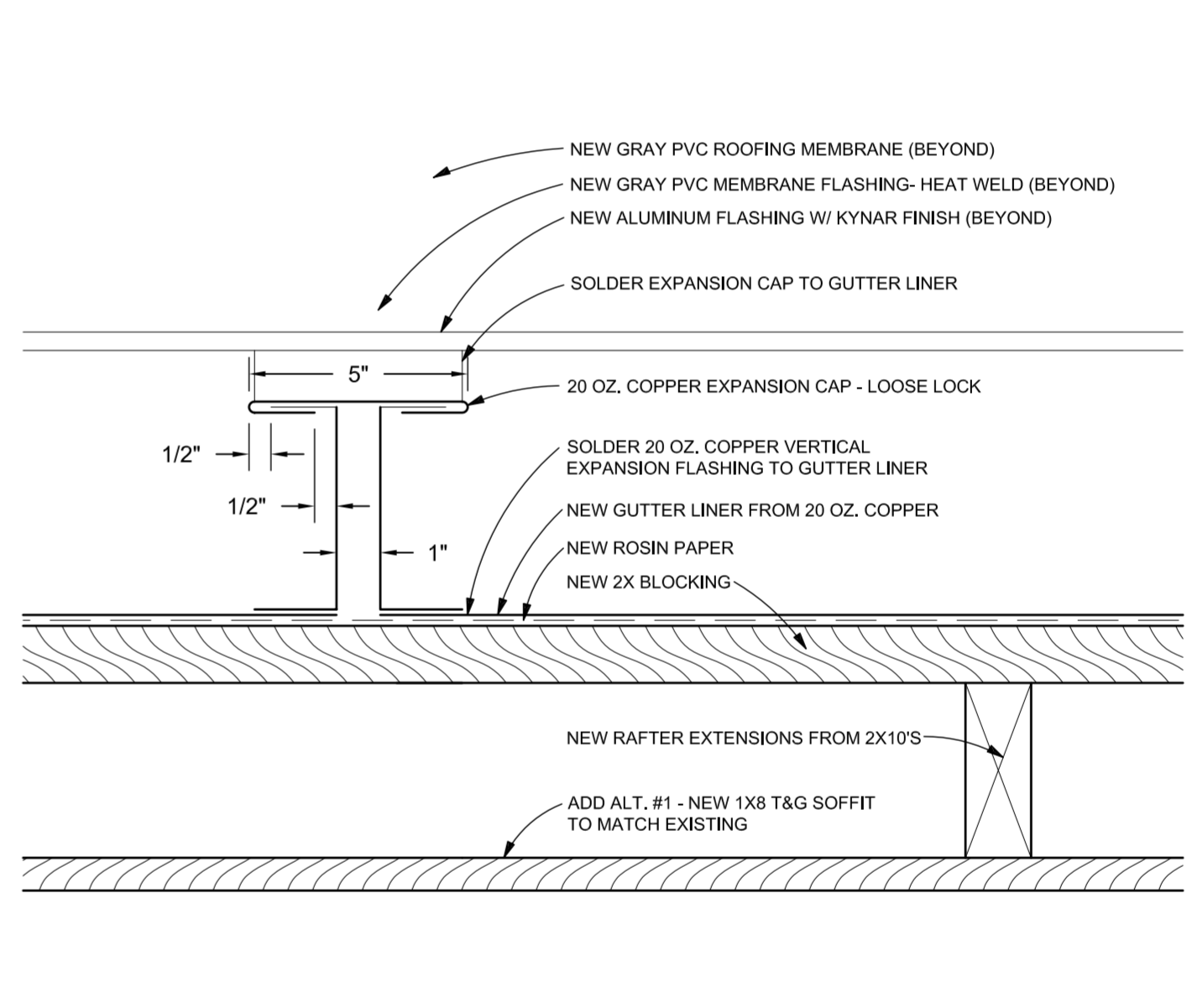
5 SECTION DETAIL
A-5 3" = 1'-0"



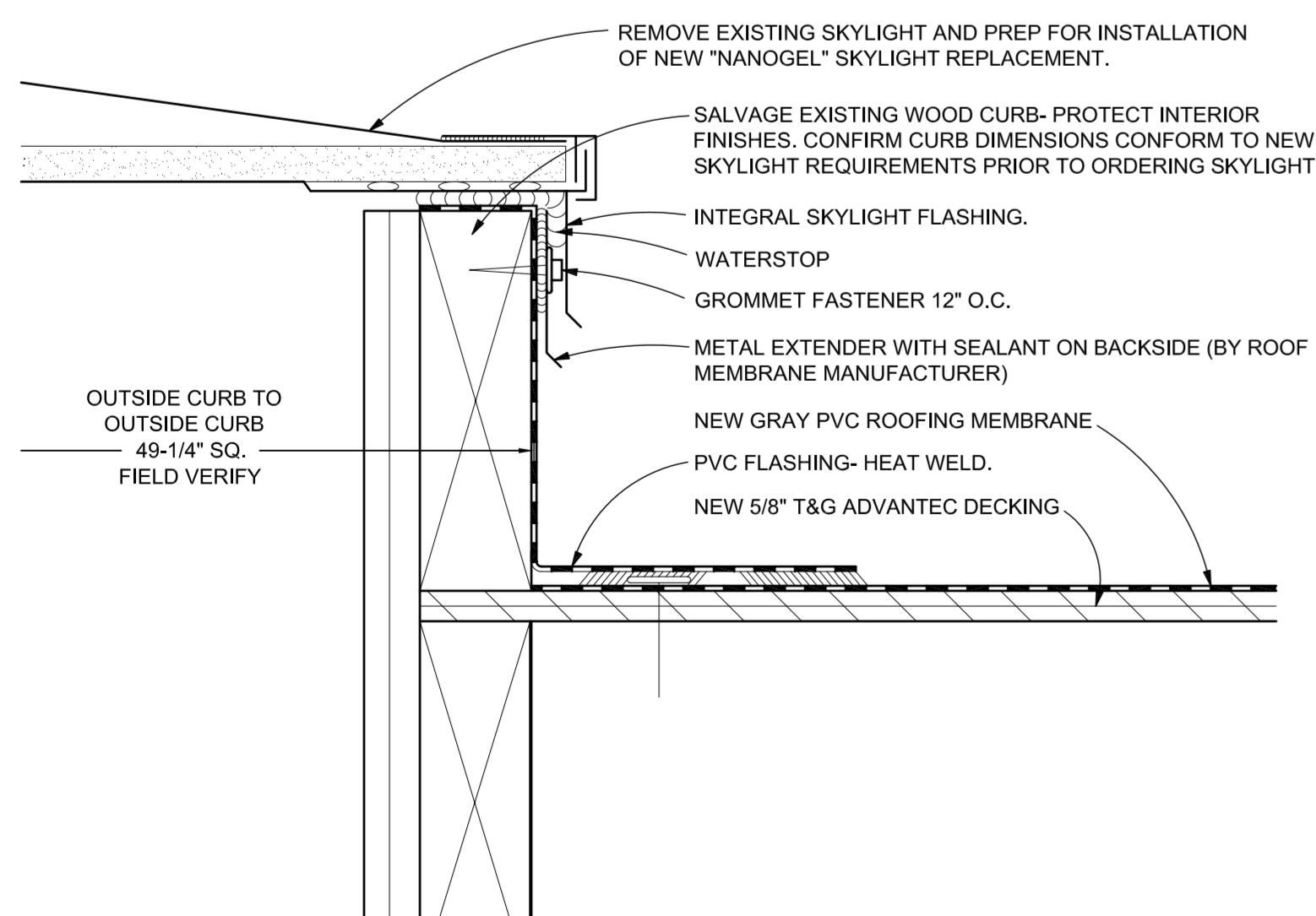
6 SECTION DETAIL @ GUTTER TERMINATION
A-5 3" = 1'-0"



7 SECTION DETAIL @ ABOVE GUTTER
A-5 3" = 1'-0"



8 SECTION DETAIL @ GUTTER EXPANSION
A-5 3" = 1'-0"



9 SECTION DETAIL AT SKYLIGHT
A-5 3" = 1'-0"

ttl-architects LLC
28 DANFORTH STREET
SUITE 213
PORTLAND, MAINE 04101
TEL. 207.761.9662
FAX. 207.761.9696

REGISTERED ARCHITECT
JOHN TURK
No. 2059
STATE OF MAINE

RESURGENCE
ENGINEERING & PRESERVATION, INC.
132 BRENTWOOD STREET
PORTLAND, ME 04103
207.773.4880

ALFRED H. HOODSON III
No. 9246
LICENSED ENGINEER

Greater Portland Landmarks
Safford House
Roof and Eave Restoration
93 High Street
Portland, Maine

Date: 6 August 2010
Scale: As Shown
Revisions:

Title:
Roof Details
Sheet No: **A-5**