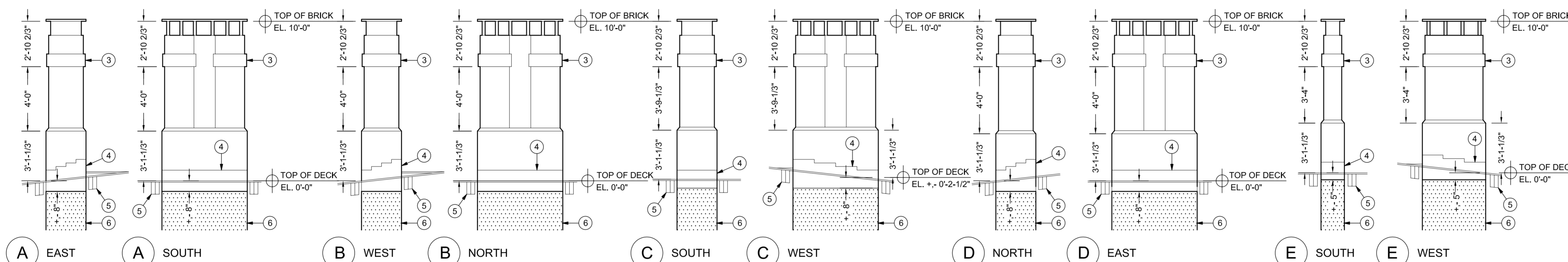
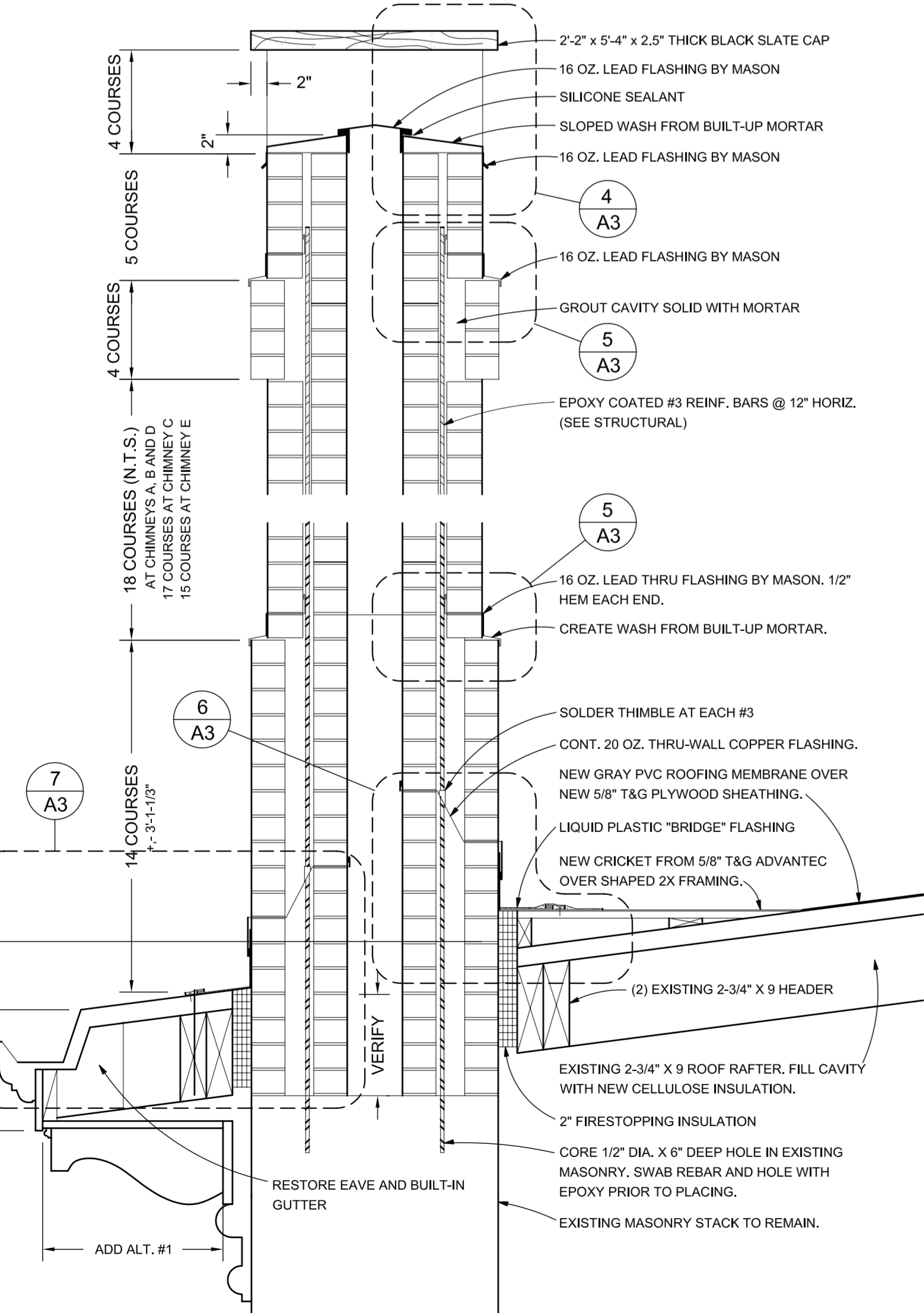


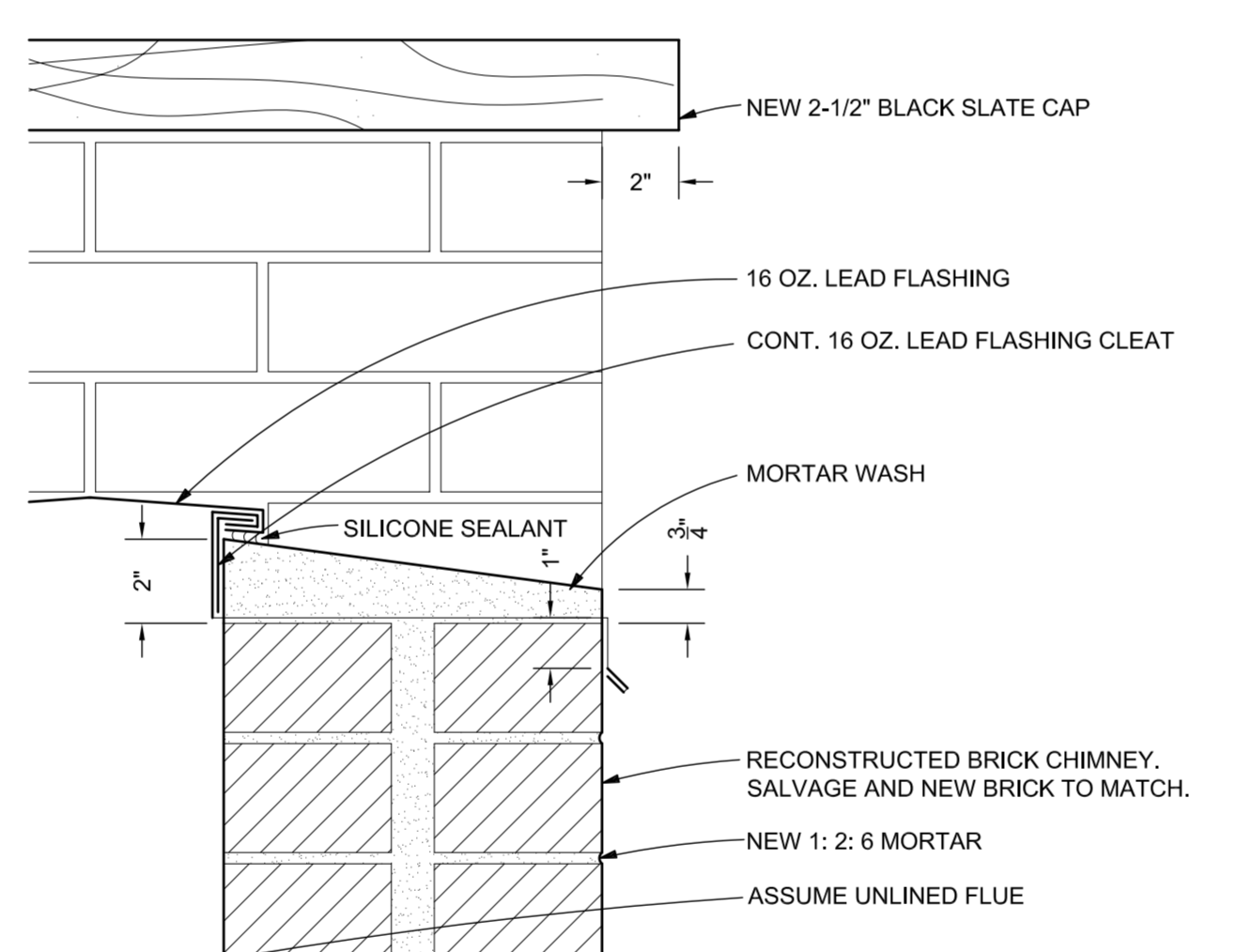
1 EXISTING CHIMNEY DEMO ELEVATIONS
 A-3 1/4" = 1'-0"



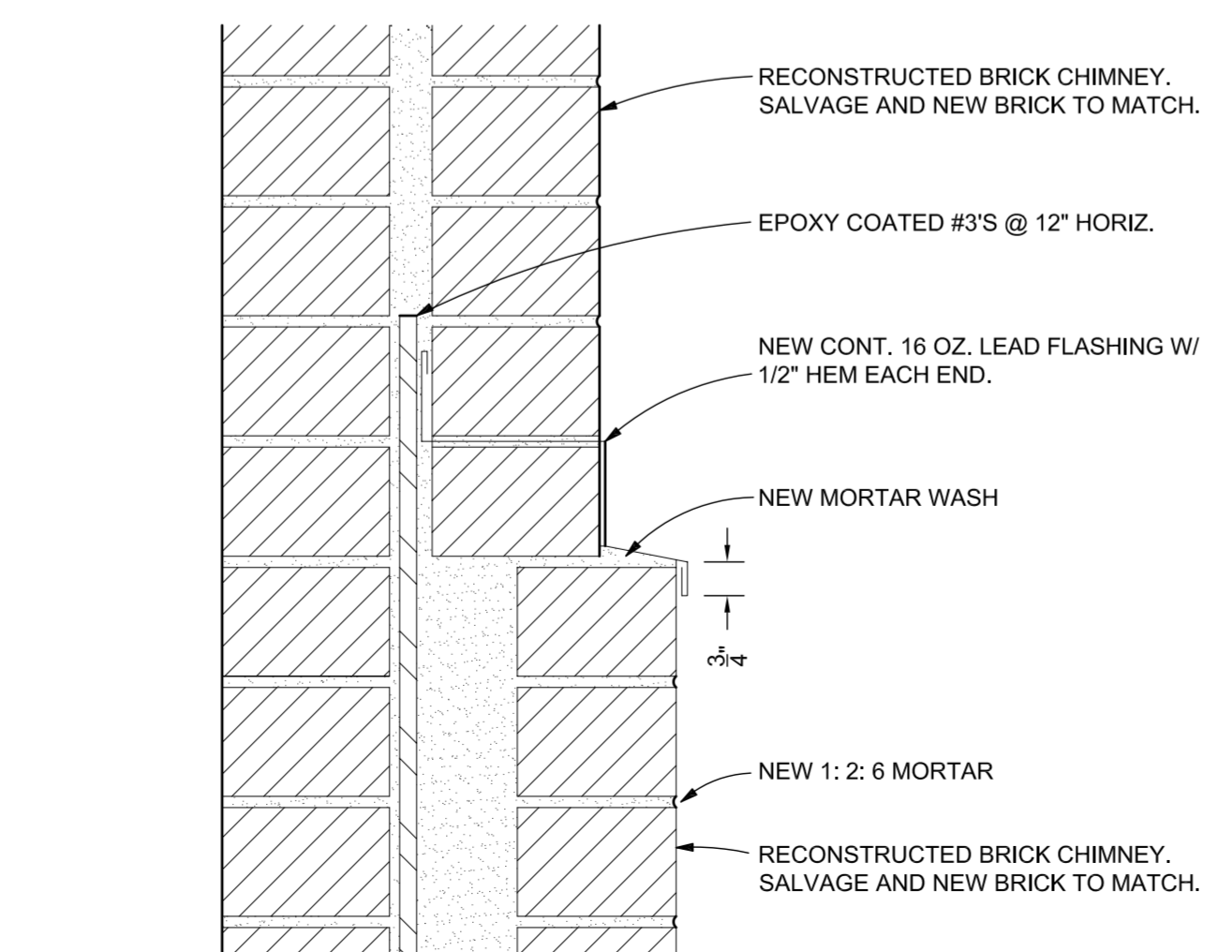
2 RECONSTRUCTED CHIMNEY ELEVATIONS
 A-3 1/4" = 1'-0"



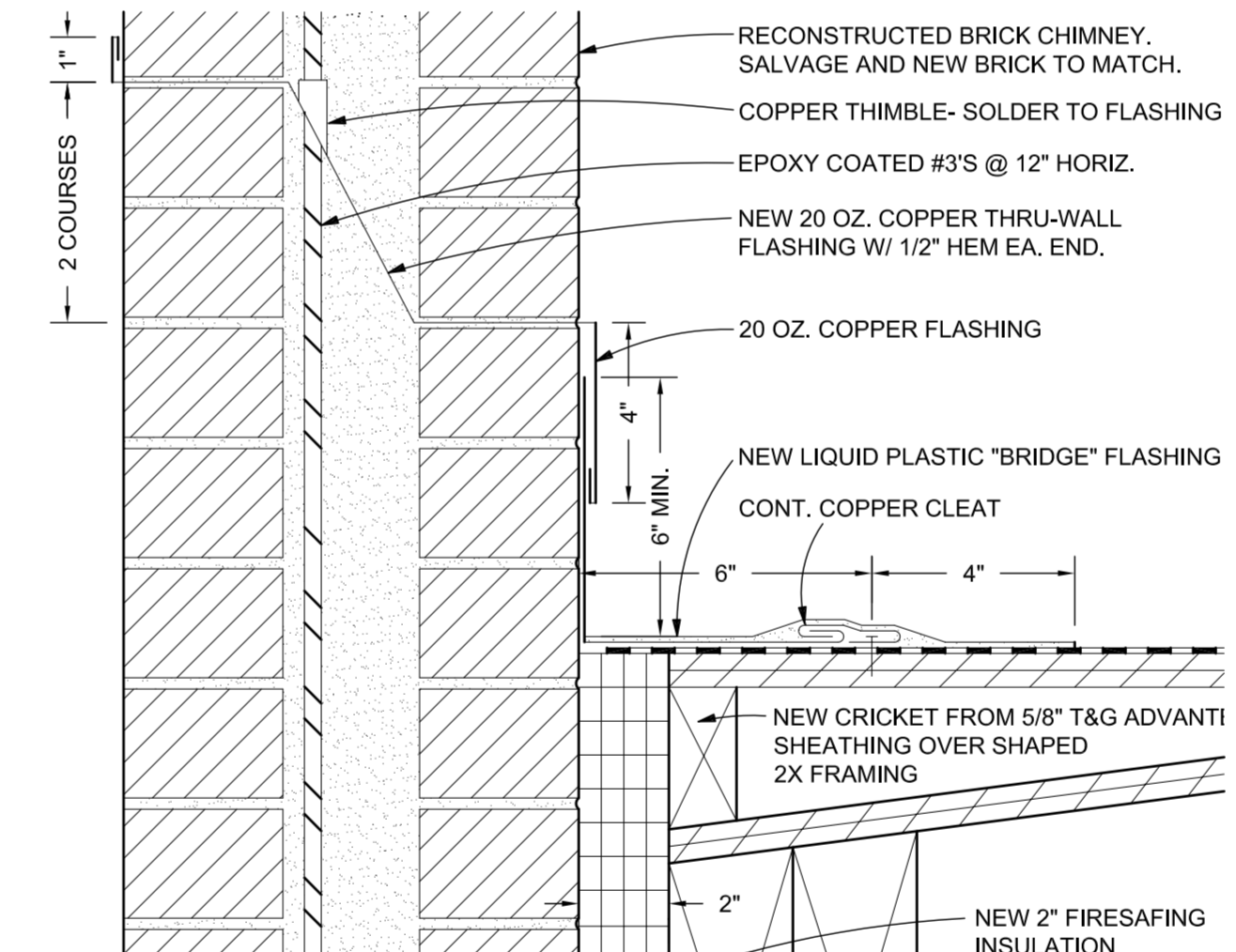
3 SECTION AT CHIMNEY
 A-3 1" = 1'-0"



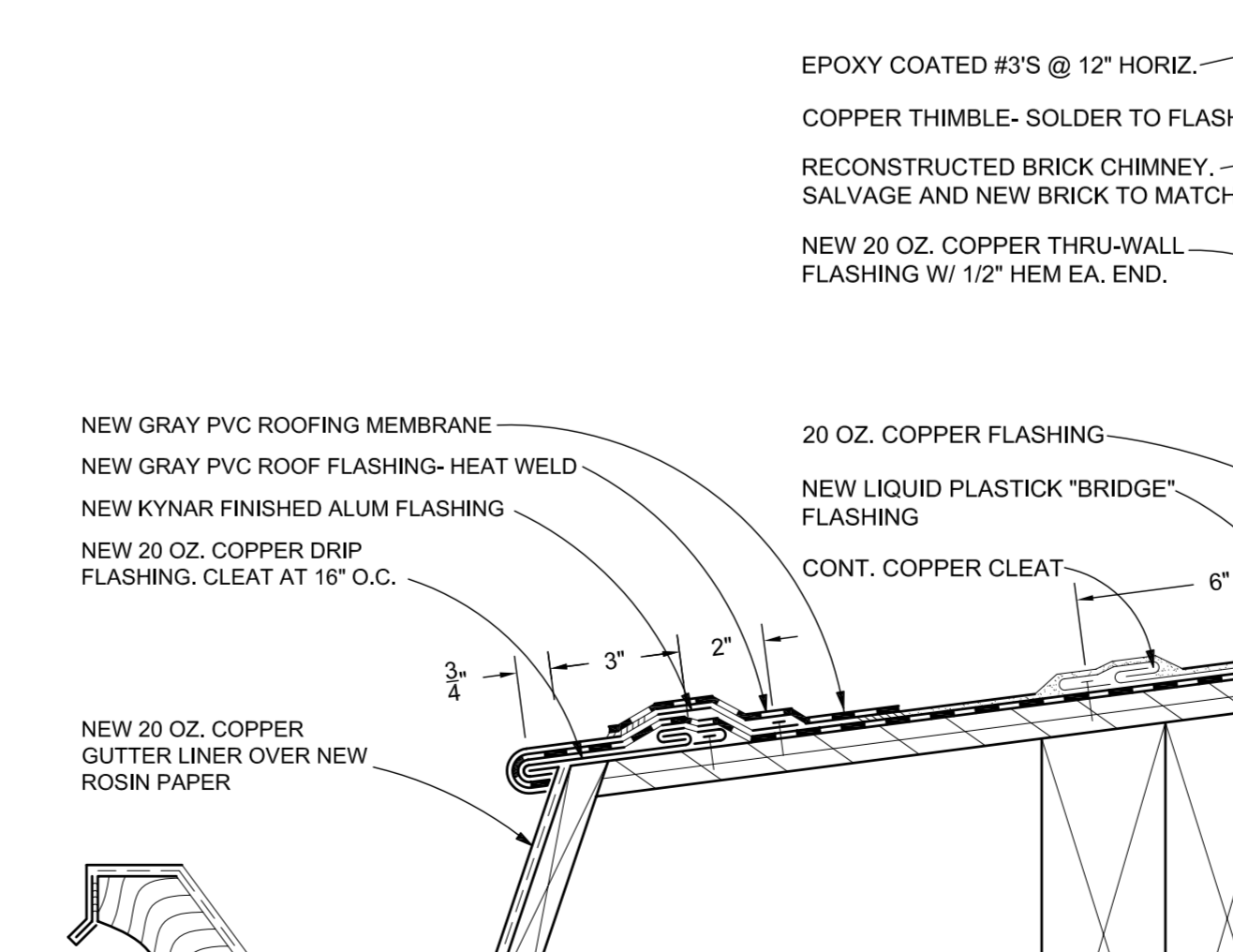
4 SECTION DETAIL
 A-3 1" = 3'-0"



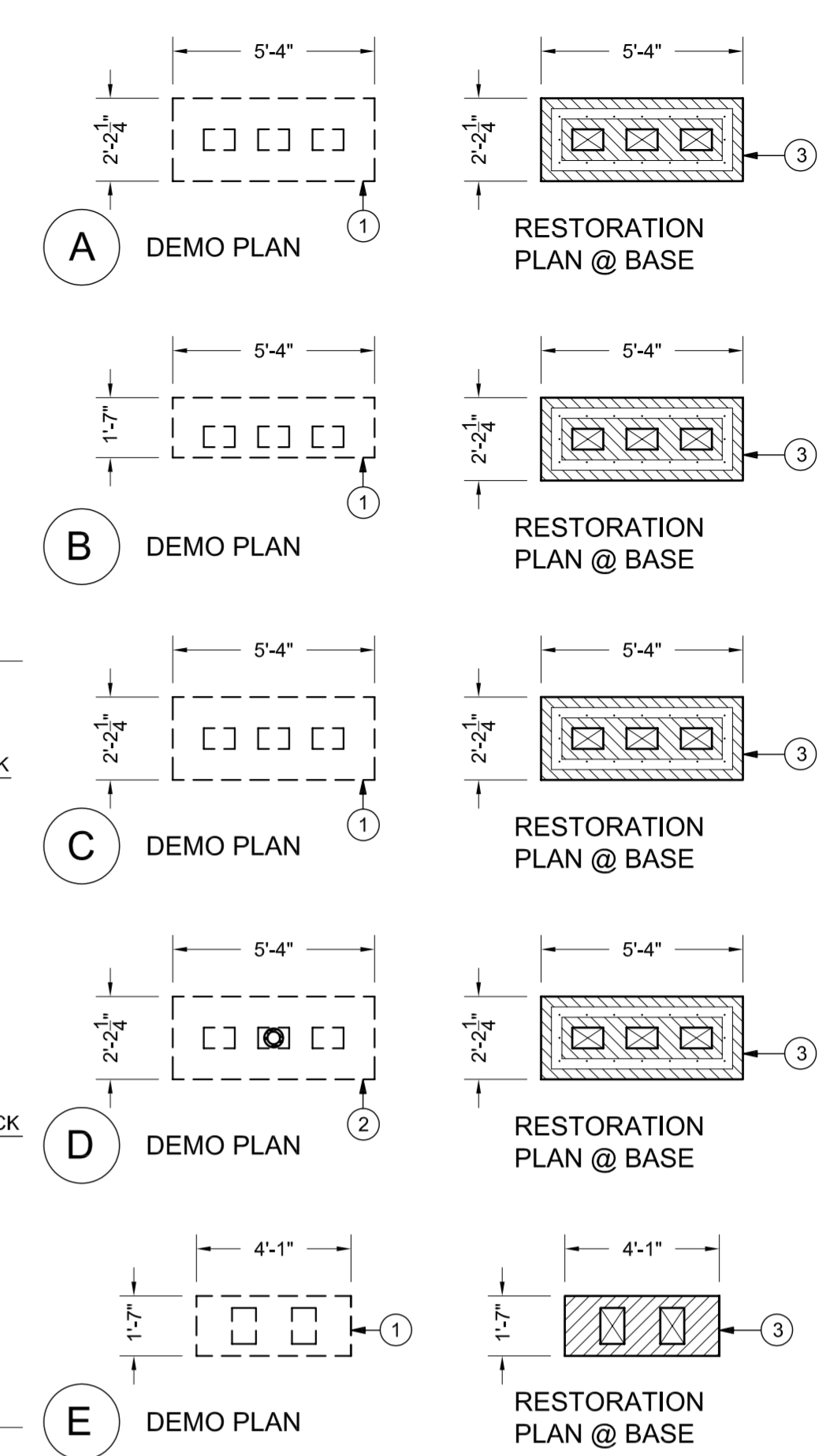
5 SECTION DETAIL
 A-3 1" = 3'-0"



6 SECTION DETAIL
 A-3 1" = 3'-0"



7 SECTION DETAIL
 A-3 1" = 3'-0"



- CHIMNEY KEY NOTES**
- 1 DISMANTLE EXISTING BRICK CHIMNEY. SALVAGE AS MUCH REUSABLE BRICK AS POSSIBLE FOR REUSE. REMOVE MORTAR FROM SALVAGE BRICK WITHOUT DAMAGING BRICK SURFACE. ASSUME 25% SALVAGE BRICK.
 - 2 DISMANTLE EXISTING BRICK CHIMNEY. PROTECT EXISTING BOILER FLUE LINER TO REMAIN. SALVAGE AS MUCH REUSABLE BRICK AS POSSIBLE FOR REUSE. REMOVE MORTAR FROM SALVAGE BRICK WITHOUT DAMAGING BRICK SURFACE. ASSUME 25% SALVAGE BRICK.
 - 3 NEW RECONSTRUCTED, REINFORCED BRICK CHIMNEY. ASSUME APPROX. 20% SALVAGE BRICK AND 80% NEW RESTORATION BRICK TO MATCH. POINTING MORTAR TO BE 1:2:6 (CEMENT: LIME: AGGREGATE). NEW CHIMNEY CAP TO BE 2-1/2" THICK BLACK SLATE. SEE DETAILS THIS SHEET FOR CORBELING AND FLASHING DETAILS. SEE STRUCTURAL FOR REINFORCEMENT DETAILS.
 - 4 NEW 20 OZ. COPPER FLASHING. SEE DETAILS THIS SHEET.
 - 5 EXISTING "LOWER TIER" ROOF FRAMING TO REMAIN. NEW 5/8" T&G ADVANTEC SHEATHING WITH NEW GRAY PVC MEMBRANE ROOFING SYSTEM.
 - 6 EXISTING BRICK MASONRY CHIMNEY STACK (BELOW ROOF PLANE) TO REMAIN AND TO SUPPORT NEW RECONSTRUCTED CHIMNEY STACK.