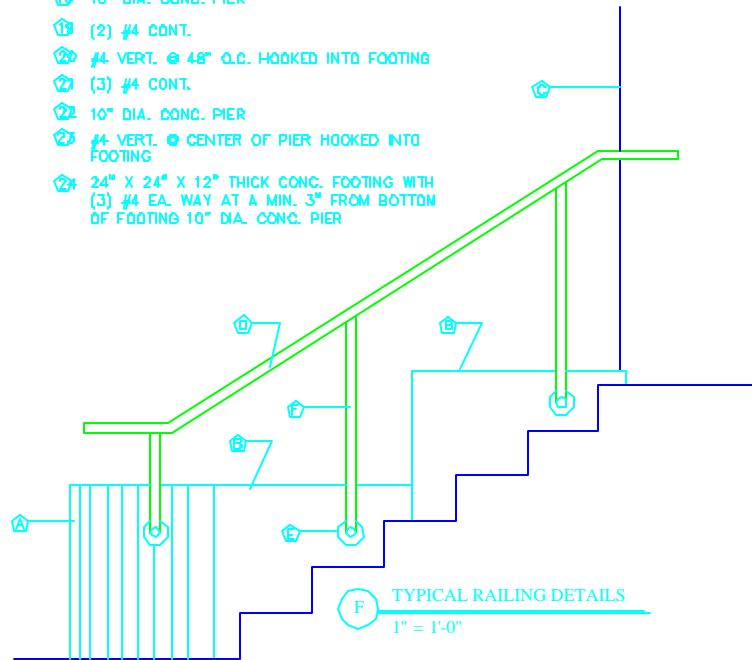


GENERAL NOTE: CONTRACTOR TO VERIFY TOTAL RAMP RISE.

KEYED NOTES:

- ① EXISTING LAWN ELEVATION
- ② EXISTING BRICK SIDEWALK
- ③ EXISTING GRANITE CHEEK BLOCK
- ④ EXISTING CONCRETE STEPS
- ⑤ 8" WIDE CONCRETE WALL, BOTTOM OF WALL 4'-0" BELOW GRADE (MIN.), METAL HAND RAILS BOTH SIDES.
- ⑥ EXISTING LAWN ELEVATION AT CITY PARK.
- ⑦ FIRST FLOOR WOOD FRAMING
- ⑧ RUBBLE FOUNDATION
- ⑨ BRICK WALL
- ⑩ STONE FOUNDATION PANEL
- ⑪ CONCRETE BASEMENT SLAB
- ⑫ EXISTING GRANITE STEPS REUSED AT BEGINNING OF RAMP
- ⑬ 16" COMPACTED STRUCTURAL FILL
- ⑭ 2" BIT. CONC. PAVING
- ⑮ BACKFILL
- ⑯ WOOD DECK
- ⑰ 10" DIA. CONC. PIER
- ⑱ (2) #4 CONT.
- ⑲ #4 VERT. @ 48" O.C. HOOKED INTO FOOTING
- ⑳ (3) #4 CONT.
- ㉑ 10" DIA. CONC. PIER
- ㉒ #4 VERT. @ CENTER OF PIER HOOKED INTO FOOTING
- ㉓ 24" X 24" X 12" THICK CONC. FOOTING WITH (3) #4 EA. WAY AT A MIN. 3" FROM BOTTOM OF FOOTING 10" DIA. CONC. PIER

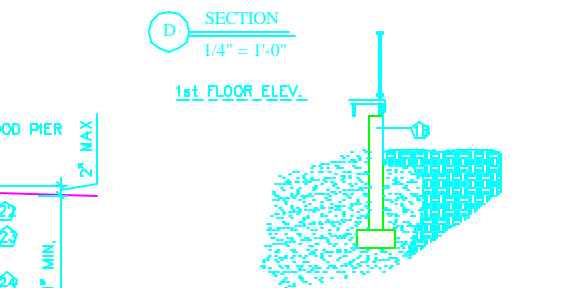
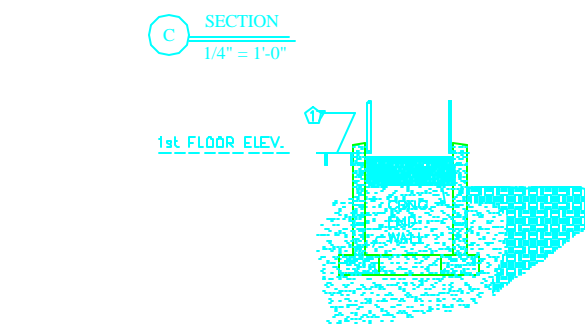
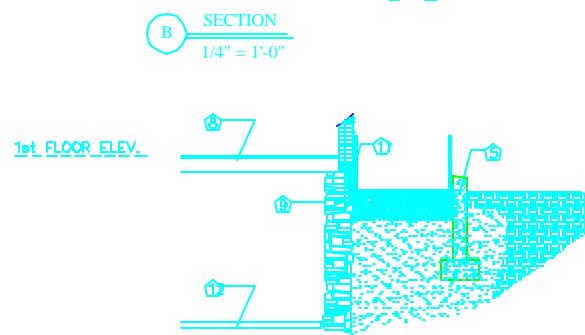
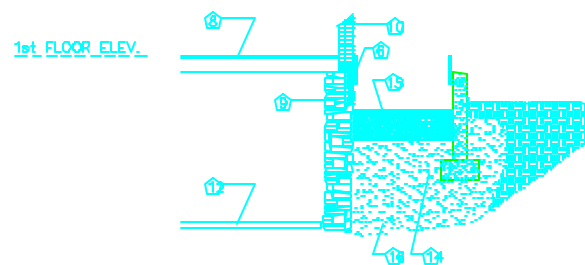
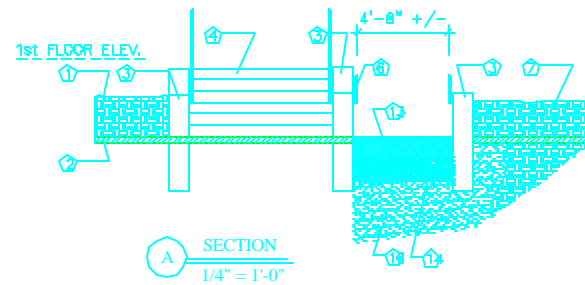
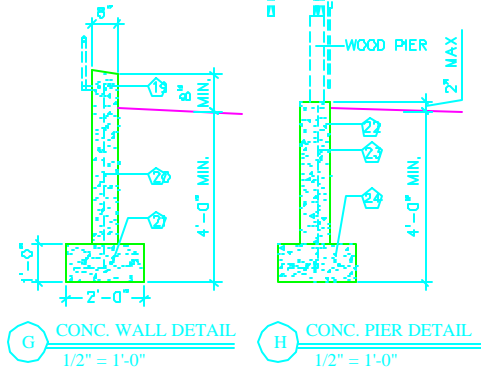


RAILING NOTE

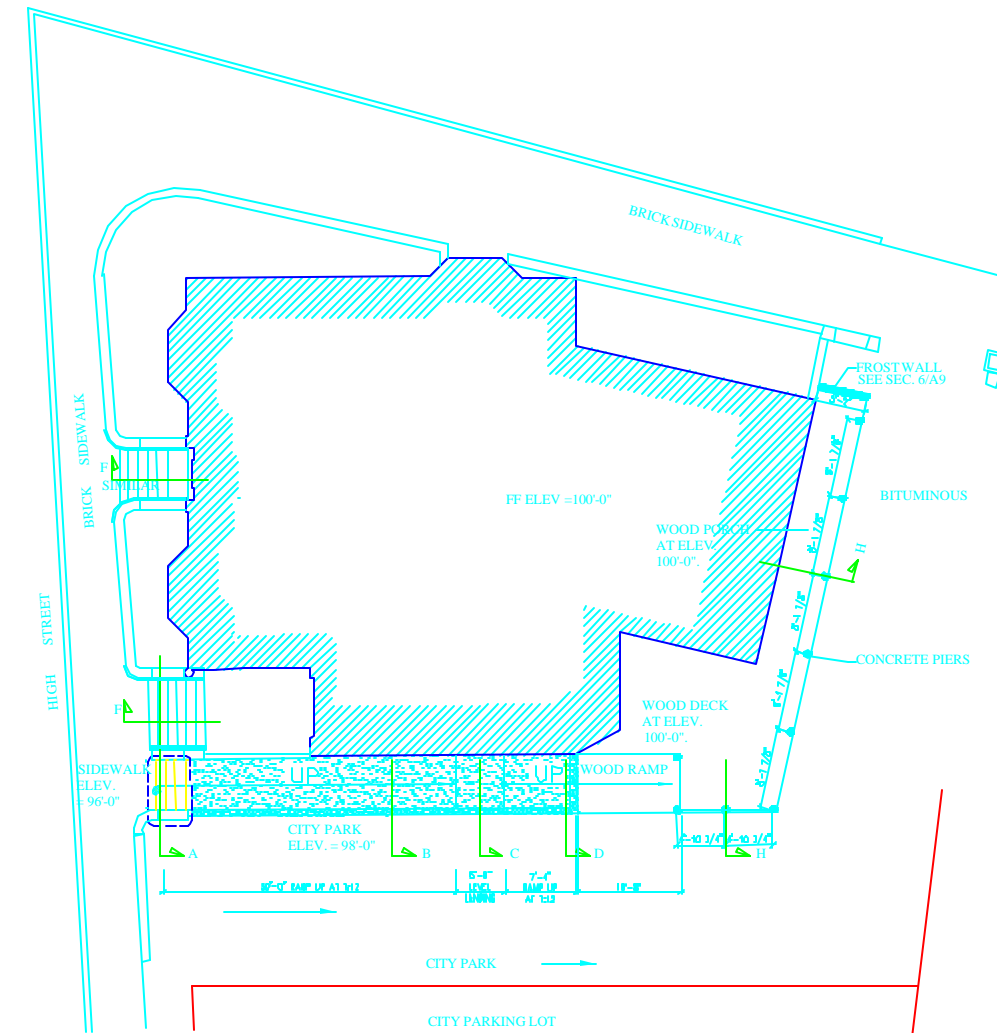
1. SEE DRAWING A3, FIRST FLOOR PLAN, FOR RAILING LOCATIONS AND EXTENSIONS. VERIFY FIELD CONDITIONS PRIOR TO PREPARATION OF SHOP DRAWINGS.

KEYED NOTES - DETAIL F/A12

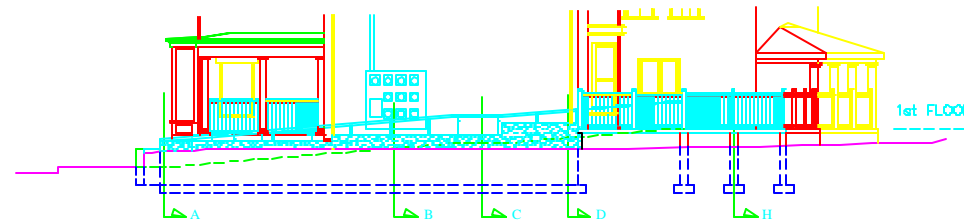
- ① EXISTING CURVED GRANITE RETAINING WALL
- ② EXISTING GRANITE CHEEK BLOCK
- ③ FACE OF BUILDING
- ④ 1 1/2" O.D. SCHEDULE 40 GALVANIZED PIPE.
- ⑤ 4" DIAMETER GALVANIZED ESCUTCHDN. MINIMUM 6" EMBEDMENT OF RAILING AT WALLS.
- ⑥ 1 1/2" O.D. SCHEDULE 40 GALVANIZED PIPE - VERTICAL SUPPORTS @ 4'-0" MAX.



E SECTION  
1/4" = 1'-0"



I FOUNDATION PLAN  
1/8" = 1'-0"



I NORTH ELEVATION  
1/8" = 1'-0"

ARCHETYPE, P.A.  
ARCHITECTS  
48 Union Wharf Portland, Maine 04101  
(207) 772-6022 Fax (207) 772-4056

90 HIGH STREET  
RENOVATIONS  
90 HIGH STREET  
PORTLAND, MAINE

Project:

Scale 1/8" = 1'  
Checked By

Date July 9, 2011  
Drawn By

Revisions

RAMP PLANS  
AND DETAILS

A12