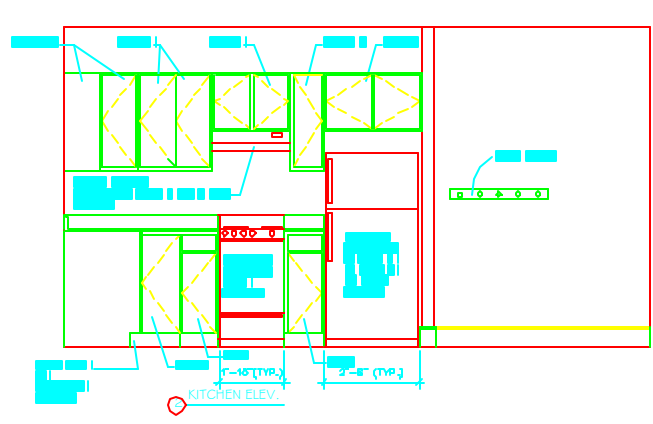
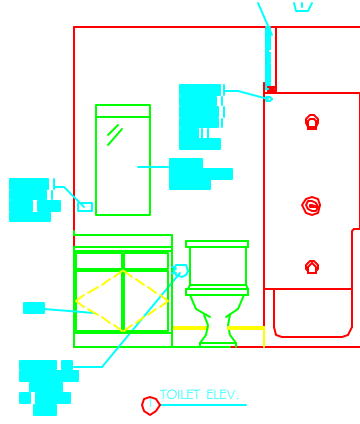


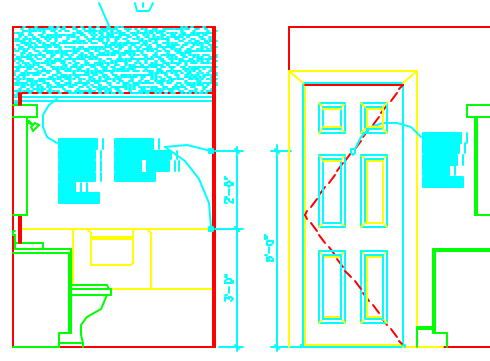
KITCHEN ELEV.  
UNIT # 1



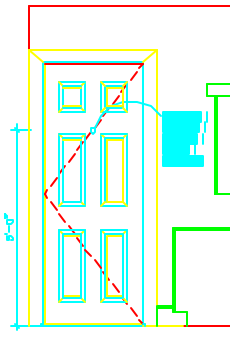
KITCHEN ELEV.



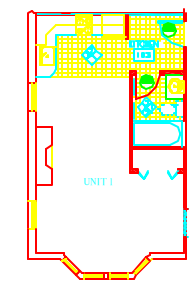
TOILET ELEV.



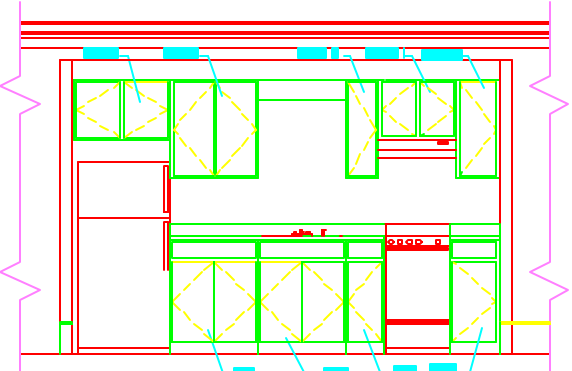
TOILET ELEV.



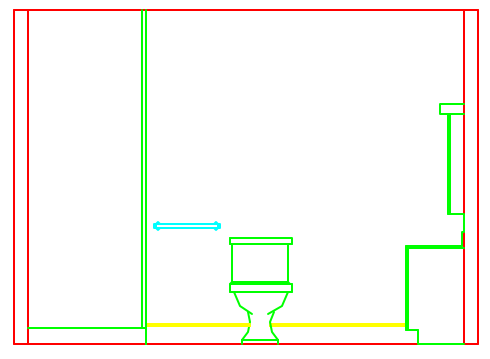
TOILET ELEV.



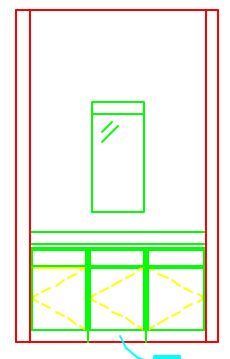
UNIT #1 KEY PLAN



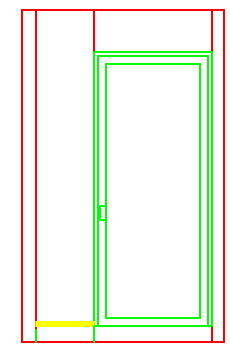
KITCHEN ELEV.  
UNIT # 2



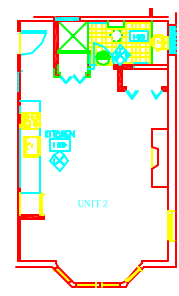
TOILET ELEV.



TOILET ELEV.



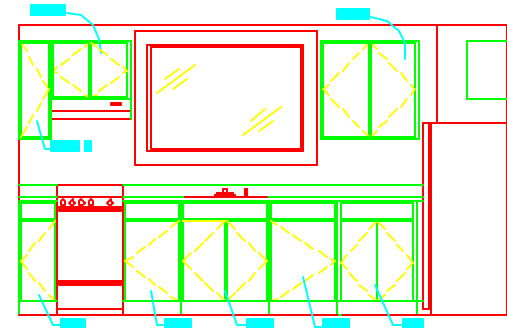
TOILET ELEV.



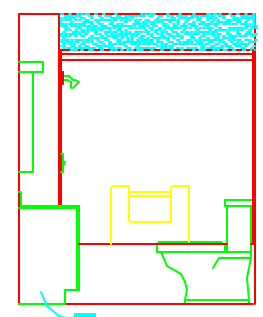
UNIT #2 KEY PLAN

BATHROOM & KITCHEN CABINETRY NOTES:

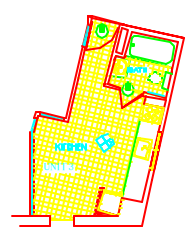
1. PROVIDE VANITY IN STAFF BATHROOM.
  2. AT LINEN CLOSETS PROVIDE (4) WIRE SHELVES.
  3. AT CLOTHES CLOSETS PROVIDE (1) SHELF WITH INTEGRAL HORIZONTAL ROD FOR CLOTHES HANGERS.
  4. VINYL BASE, BY CONTRACTOR, IS TYPICAL AT KITCHEN AND BATHROOM CABINETRY. VINYL BASE IS 8" HIGH IN HC ACCESSIBLE UNIT #4.
- KEYED NOTES:  
 1. 2x4 @ 16" O.C. G.B. (PTD.) SOFFIT AT SHOWER AND SHOWER/TUB UNITS - (TYPICAL - DEPTH VARIES.)



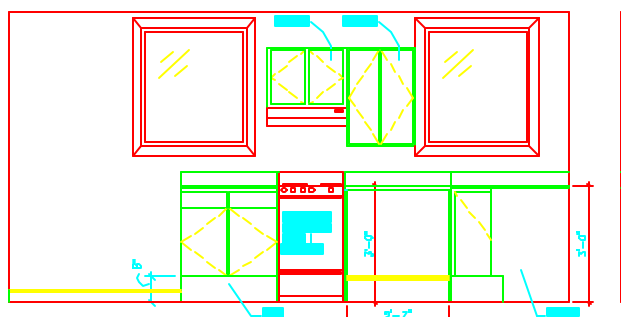
KITCHEN ELEV.  
UNIT # 3



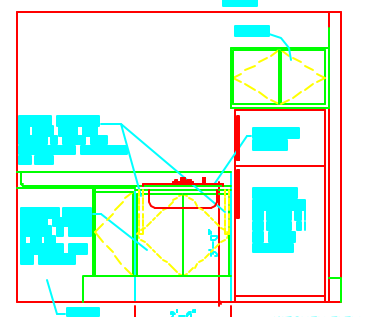
TOILET ELEV.



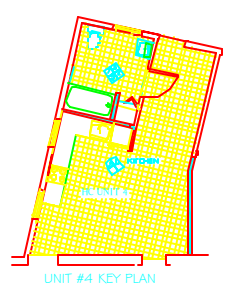
UNIT #3 KEY PLAN



KITCHEN ELEV.

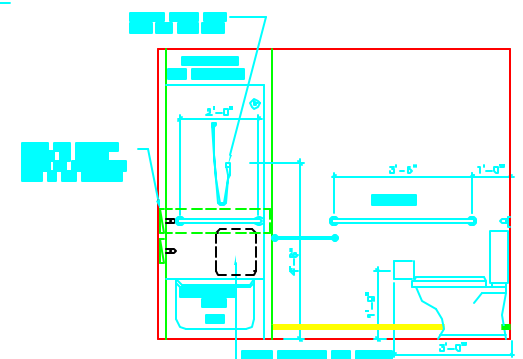


KITCHEN ELEV.

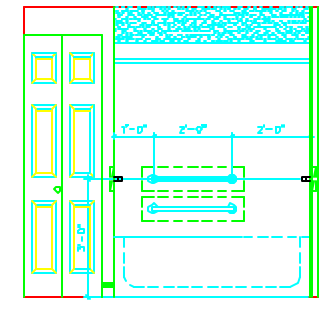


UNIT #4 KEY PLAN

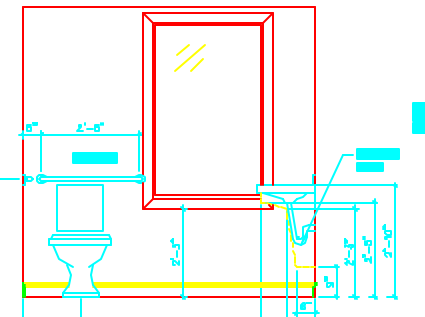
UNIT # 4 HC



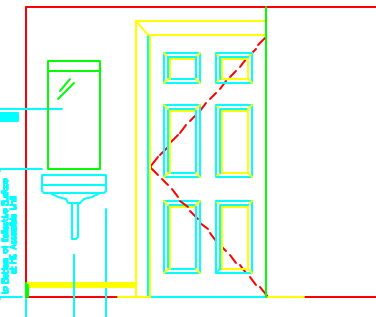
TOILET ELEV.



TOILET ELEV.



TOILET ELEV.



TOILET ELEV.

ARCHETYPE, P.A.  
 ARCHITECTS  
 48 Union Wharf Portland, Maine 04101  
 (207) 772-8022 Fax (207) 772-4058

Project: 90 - 92 HIGH STREET RENOVATIONS  
 90 - 92 HIGH STREET PORTLAND, MAINE

Scale	1/2" = 1'
Checked By	
Date	
Drawn By	
Revisions	

INTERIOR ELEVATIONS  
 UNITS 1-4