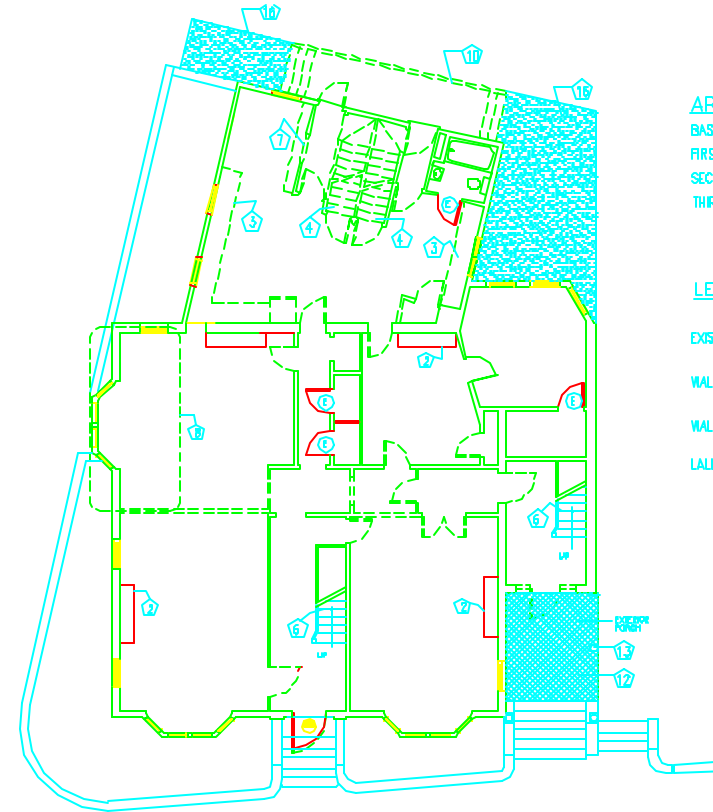
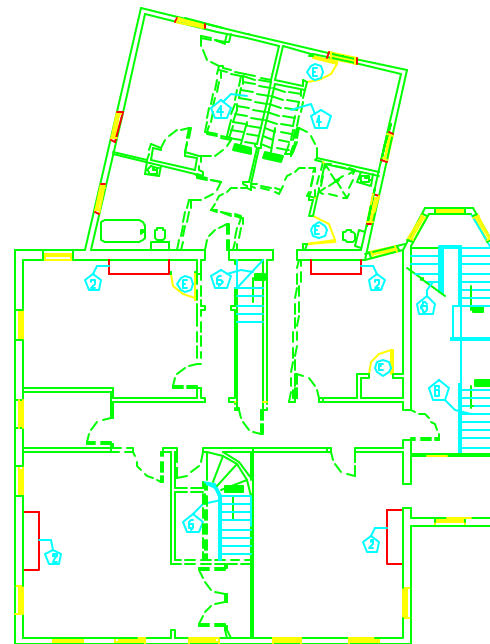


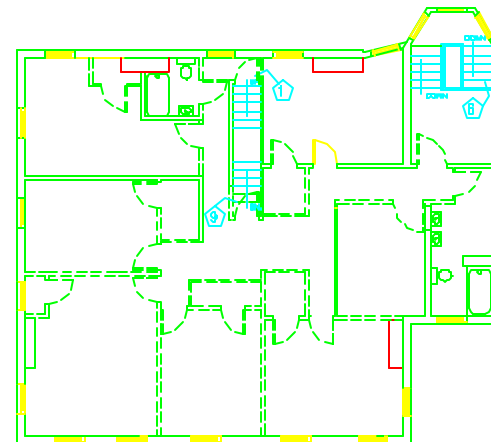
BASEMENT DEMO PLAN



FIRST FLOOR DEMO PLAN



SECOND FLOOR DEMO PLAN



THIRD FLOOR DEMO PLAN

AREA SCHEDULE

BASEMENT - 2388'
 FIRST FLOOR - 2388'
 SECOND FLOOR - 2328'
 THIRD FLOOR - 1732'

LEGEND

- EXISTING DOOR TO REMAIN
- WALL OR ITEM TO BE REMOVED
- WALL TO REMAIN
- LULLY COLUMN ON CONCRETE FOOTING

GENERAL DEMOLITION NOTES:

1. COORDINATE DEMOLITION WITH ELECTRICAL, MECHANICAL AND STRUCTURAL DOCUMENTS. REFER TO ROOM FINISH SCHEDULE IN SPECIFICATIONS FOR ADDITIONAL INFORMATION.
2. DEMOLITION IS NOT LIMITED TO WORK SHOWN ON THIS SHEET. THE CONTRACTOR IS RESPONSIBLE FOR ANY AND ALL DEMOLITION OR REMOVAL REQUIRED TO IMPLEMENT WORK.
3. MECHANICAL & ELECTRICAL SUB-CONTRACTORS TO CUT & TERMINATE UTILITIES IN CONFORMANCE V/CODE.
4. G.C. TO DEMO & DISPOSE OF ALL TERMINATED ELECTRICAL & MECHANICAL DEVICES & EQUIPMENT.
5. REFER TO ROOM FINISH SCHEDULE FOR FURTHER CLARIFICATION OF FINISHES TO BE REMOVED.
6. REMOVE 2"-0" STRIP OF CEILING ON EITHER SIDE OF WALLS THAT ARE TO BE REMOVED. NOTIFY ARCHITECT UPON REMOVAL OF CEILING FOR STRUCTURAL EVALUATION.

KEYED NOTES

- 1 DEMO OPENING FOR NEW DOOR. DEMO EXISTING DOOR AND CASING.
- 2 EXISTING MANTEL TO REMAIN (TYP)
- 3 REMOVE EXISTING KITCHEN CABINETRY AND APPLIANCES
- 4 REMOVE EXISTING STAIRS
- 5 REMOVE PORTION OF BRICK BASEMENT DEMISING WALL - PROVIDE 4'-0" OPENING.
- 6 EXISTING STAIR TO REMAIN
- 7 MAKE OPENING FOR NEW DOOR WAY
- 8 DEMO CEILING 8'-0" OUT FROM WALL, PLUS THE CEILING IN THE BAY
- 9 DEMO EXISTING FIRST TWO RISERS FOR NEW LANDING
- 10 REMOVE PORCH & ITS FOUNDATION.
- 11 BREAKOUT BRICK WALL TO 3'-0" WIDE OPENING.
- 12 REMOVE PORCH SLAB - SAWCUT SLAB TO PRESERVE TOP RISER & TREAD.
- 13 REMOVE WOOD COLUMNS (TYP. OF 3) & WOOD PLASTER. SHORE UP PORCH.
- 14 REMOVE DEBRIS IN CAVITY.
- 15 IN THE AREA INDICATED CONTRACTOR TO CARRY IN HIS BID: REMOVAL OF THE EXISTING DETERIORATED CONCRETE FLOOR, INSTALLATION OF 12" MIN. COMPACTED STRUCTURAL FILL, NEW 4" THICK CONCRETE FLOOR WITH WWF REINFORCEMENT.
- 16 REMOVE CONCRETE PAVING.

ARCHETYPE, P.A.
ARCHITECTS

48 Union Wharf Portland, Maine 04101
 (207) 772-6022 Fax (207) 772-4056

Project:
90 - 92 HIGH STREET
RENOVATIONS

90 - 92 HIGH STREET
 PORTLAND, MAINE

Scale: 1/8" = 1'
 Checked By

Date
 Drawn By
 Revisions

DEMOLITION PLANS