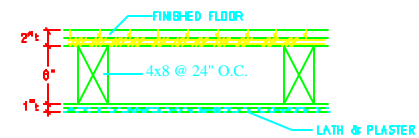


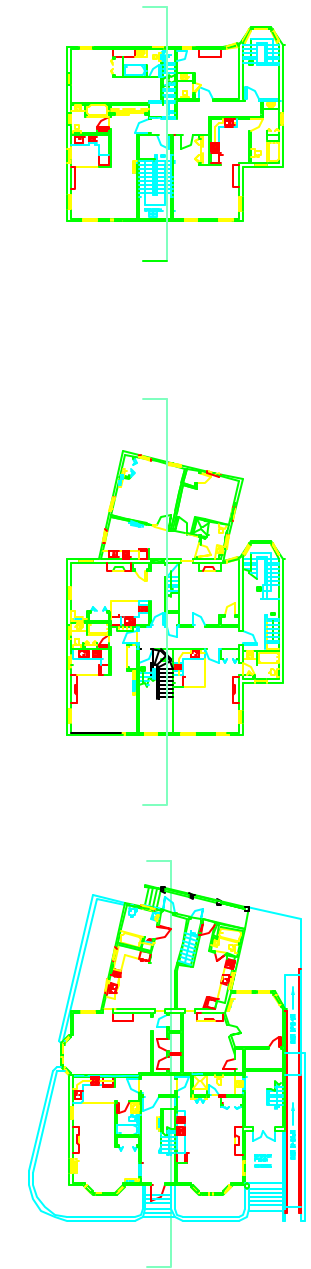
BUILDING SECTION



A TYP. FLOOR SYSTEM (V.I.F.)
1" = 1'-0"

KEYED NOTES:

- ① G.B. SOFFIT AT LANDING IN STAIR 216.
- ② (3) 2x SOLID BLOCKING
- ③ NEW 2x4 @ 16" O.C. WALL W/5/8" FIRECODE "C" G.B. BOTH SIDES, ALIGN WITH STAIRWELL WALL ABOVE.



ARCHETYPE, P.A.
ARCHITECTS

48 Union Wharf Portland, Maine 04101
(207) 772-6022 Fax (207) 772-4056

Project:
90 - 92 HIGH STREET RENOVATIONS

90 - 92 HIGH STREET
PORTLAND, MAINE

Date	Scale 1/4" = 1'
Drawn By	Checked By
Revisions	

BUILDING SECTION

A7