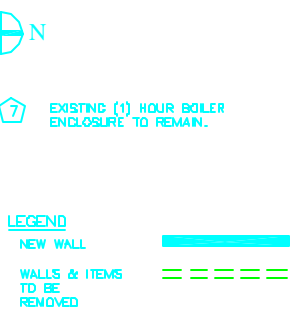


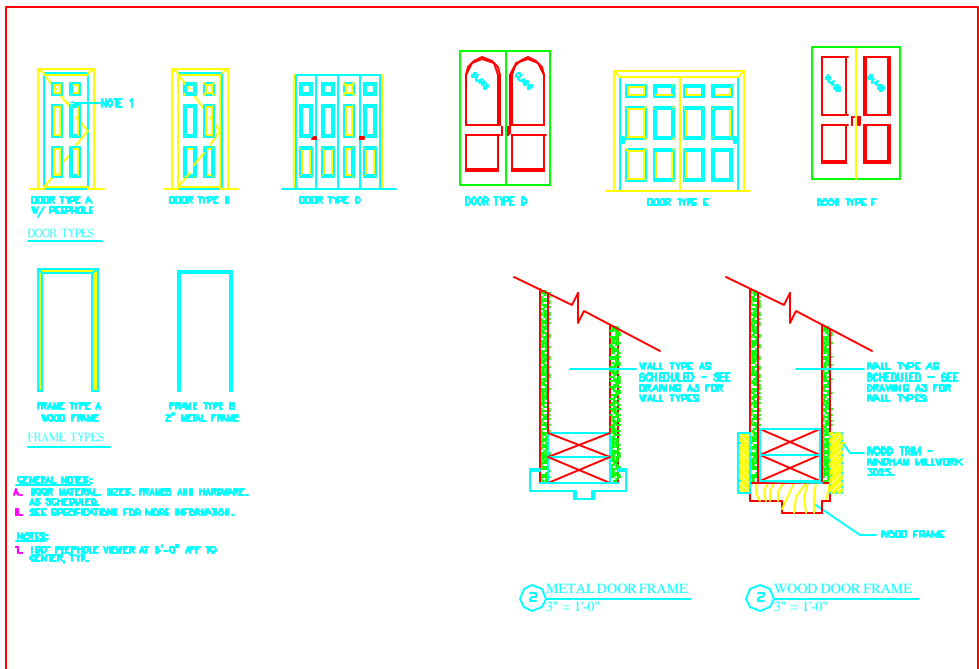
NOTE: SEE A & B/A06 FOR STAIR DETAILS.  
**STAIR SECTION**  
 1/4" = 1'-0"

**BASEMENT FLOOR PLAN**  
 1/4" = 1'-0"

- KEYED NOTES:**
- 1 NEW PLYWOOD STAIRS FROM BASEMENT TO EXTERIOR - 11" TREADS, RISERS NOT TO EXCEED 7", WOOD HANDRAILS BOTH SIDES.
  - 2 PATCH CONCRETE SLAB AT OPENING IN DEMISING WALL.
  - 3 NOT USED
  - 4 BRICK UP WINDOW OPENING - FINISH BRICK TO MATCH EXISTING FINISH WHERE EXPOSED.
  - 5 4" LALLY COLUMN TO SUPPORT 6X8 BEAM. PROVIDE 2'X2'X1" HIGH CONCRETE PAD AT BASE.
  - 6 IN THE AREA INDICATED CONTRACTOR TO CARRY IN HIS BID: REMOVAL OF THE EXISTING DETERIORATED CONCRETE FLOOR, INSTALLATION OF 8" MIN. COMPACTED STRUCTURAL FILL, NEW 4" THICK CONCRETE FLOOR WITH WWF REINFORCEMENT.
  - 7 EXISTING (1) HOUR BOILER ENCLOSURE TO REMAIN.



DOOR SCHEDULE											
NO.	WIDTH	HEIGHT	SWGL	TYPE	MATERIAL	FINISH	FRAME TYPE	MATERIAL	FINISH	GLASS	REMARKS
101	2'-2"	7'-0"	1-3/4"	B	MLD	PD	A	WOOD	PTL		PROVIDE PRIVACY SET HARDWARE
102	2'-2"	7'-0"	1-3/4"	B	MLD	PD	A	WOOD	PTL		PROVIDE PASSAGE SET HARDWARE
103	2'-2"	7'-0"	1-3/4"	B	MLD	PD	F	U/L	PTL	NO GLASS	PROVIDE ENWANE SET HARDWARE W/ GLASS
104	2'-2"	7'-0"	1-3/4"	B	MLD	PD	A	WOOD	PTL		PROVIDE PRIVACY SET HARDWARE
105	2'-2"	7'-0"	1-3/4"	D	MLD	PD	F	U/L	PTL	NO GLASS	IN FLD DOOR - SEE NOTE #1
106	2'-2"	7'-0"	1-3/4"	D	MLD	PD	F	U/L	PTL	NO GLASS	PROVIDE ENWANE SET HARDWARE W/ GLASS
107	2'-2"	7'-0"	1-3/4"	A	MLD	PD	F	U/L	PTL	NO GLASS	PROVIDE ENWANE SET HARDWARE W/ GLASS
108	2'-2"	7'-0"	1-3/4"	B	MLD	PD	A	WOOD	PTL		PROVIDE PRIVACY SET HARDWARE
109	2'-2"	7'-0"	1-3/4"	D	MLD	PD	F	U/L	PTL	NO GLASS	IN FLD DOOR - SEE NOTE #1
110	2'-2"	7'-0"	1-3/4"	D	MLD	PD	F	U/L	PTL	NO GLASS	PROVIDE ENWANE SET HARDWARE W/ GLASS
111	2'-2"	7'-0"	1-3/4"	F	ML	PD	U/L	U/L	PTL		PROVIDE ENWANE SET HARDWARE - INSULATED
112	2'-2"	7'-0"	1-3/4"	D	MLD	PD	F	U/L	PTL	NO GLASS	PROVIDE ENWANE SET HARDWARE W/ GLASS
113	2'-2"	7'-0"	1-3/4"	B	MLD	PD	A	WOOD	PTL		PROVIDE PRIVACY SET HARDWARE
114	2'-2"	7'-0"	1-3/4"	D	MLD	PD	F	U/L	PTL	NO GLASS	IN FLD DOOR - SEE NOTE #1
115	2'-2"	7'-0"	1-3/4"	A	ML	PD	A	WOOD	PTL		PROVIDE ENWANE SET HARDWARE - INSULATED
116	2'-2"	7'-0"	1-3/4"	A	ML	PD	A	WOOD	PTL		PROVIDE ENWANE SET HARDWARE - INSULATED
117	2'-2"	7'-0"	1-3/4"	A	ML	PD	A	WOOD	PTL		PROVIDE ENWANE SET HARDWARE - INSULATED
118	2'-2"	7'-0"	1-3/4"	B	MLD	PD	A	WOOD	PTL		PROVIDE PRIVACY SET HARDWARE
119	2'-2"	7'-0"	1-3/4"	B	MLD	PD	A	WOOD	PTL		PROVIDE PASSAGE SET HARDWARE
120	2'-2"	7'-0"	1-3/4"	B	MLD	PD	A	WOOD	PTL		PROVIDE PRIVACY SET HARDWARE
121	2'-2"	7'-0"	1-3/4"	B	MLD	PD	A	WOOD	PTL		PROVIDE PRIVACY SET HARDWARE
122	2'-2"	7'-0"	1-3/4"	C	MLD	PD	F	U/L	PTL	NO GLASS	PROVIDE ENWANE SET HARDWARE W/ GLASS
123	2'-2"	7'-0"	1-3/4"	B	MLD	PD	A	WOOD	PTL		PROVIDE PRIVACY SET HARDWARE
124	2'-2"	7'-0"	1-3/4"	D	MLD	PD	F	U/L	PTL	NO GLASS	IN FLD DOOR - SEE NOTE #1
125	2'-2"	7'-0"	1-3/4"	D	MLD	PD	F	U/L	PTL	NO GLASS	PROVIDE ENWANE SET HARDWARE W/ GLASS
126	2'-2"	7'-0"	1-3/4"	A	ML	PD	A	WOOD	PTL		PROVIDE ENWANE SET HARDWARE - INSULATED
127	2'-2"	7'-0"	1-3/4"	D	MLD	PD	F	U/L	PTL	NO GLASS	PROVIDE ENWANE SET HARDWARE W/ GLASS
128	2'-2"	7'-0"	1-3/4"	D	MLD	PD	F	U/L	PTL	NO GLASS	PROVIDE ENWANE SET HARDWARE W/ GLASS
129	2'-2"	7'-0"	1-3/4"	A	ML	PD	A	WOOD	PTL		PROVIDE ENWANE SET HARDWARE - INSULATED
130	2'-2"	7'-0"	1-3/4"	C	MLD	PD	F	U/L	PTL	NO GLASS	PROVIDE ENWANE SET HARDWARE W/ GLASS
131	2'-2"	7'-0"	1-3/4"	B	MLD	PD	A	WOOD	PTL		PROVIDE PRIVACY SET HARDWARE
132	2'-2"	7'-0"	1-3/4"	B	MLD	PD	A	WOOD	PTL		PROVIDE PRIVACY SET HARDWARE
133	2'-2"	7'-0"	1-3/4"	B	MLD	PD	A	WOOD	PTL		PROVIDE PRIVACY SET HARDWARE
134	2'-2"	7'-0"	1-3/4"	B	MLD	PD	A	WOOD	PTL		PROVIDE PRIVACY SET HARDWARE
135	2'-2"	7'-0"	1-3/4"	A	ML	PD	F	U/L	PTL	NO GLASS	PROVIDE ENWANE SET HARDWARE W/ GLASS



**ARCHETYPE, P.A.**  
**ARCHITECTS**

**90-92 HIGH STREET RENOVATIONS**

45 Union Wharf Portland, Maine 04101  
 (207) 772-8022 Fax (207) 772-4056

90-92 HIGH STREET  
 PORTLAND, MAINE

Project: 90-92 HIGH STREET RENOVATIONS

Scale: 1/4" = 1'

Checked By: \_\_\_\_\_

Drawn By: \_\_\_\_\_

Revisions: \_\_\_\_\_

BASEMENT PLAN  
 DOOR SCHEDULE

**A2**

