




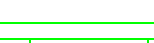



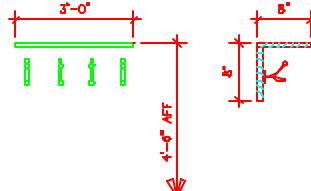
**GENERAL NOTES:**

1. SEE DRAWING A5a FOR LOCATIONS OF UTILITY SOFFITS AND CHASES.

**LEGEND**

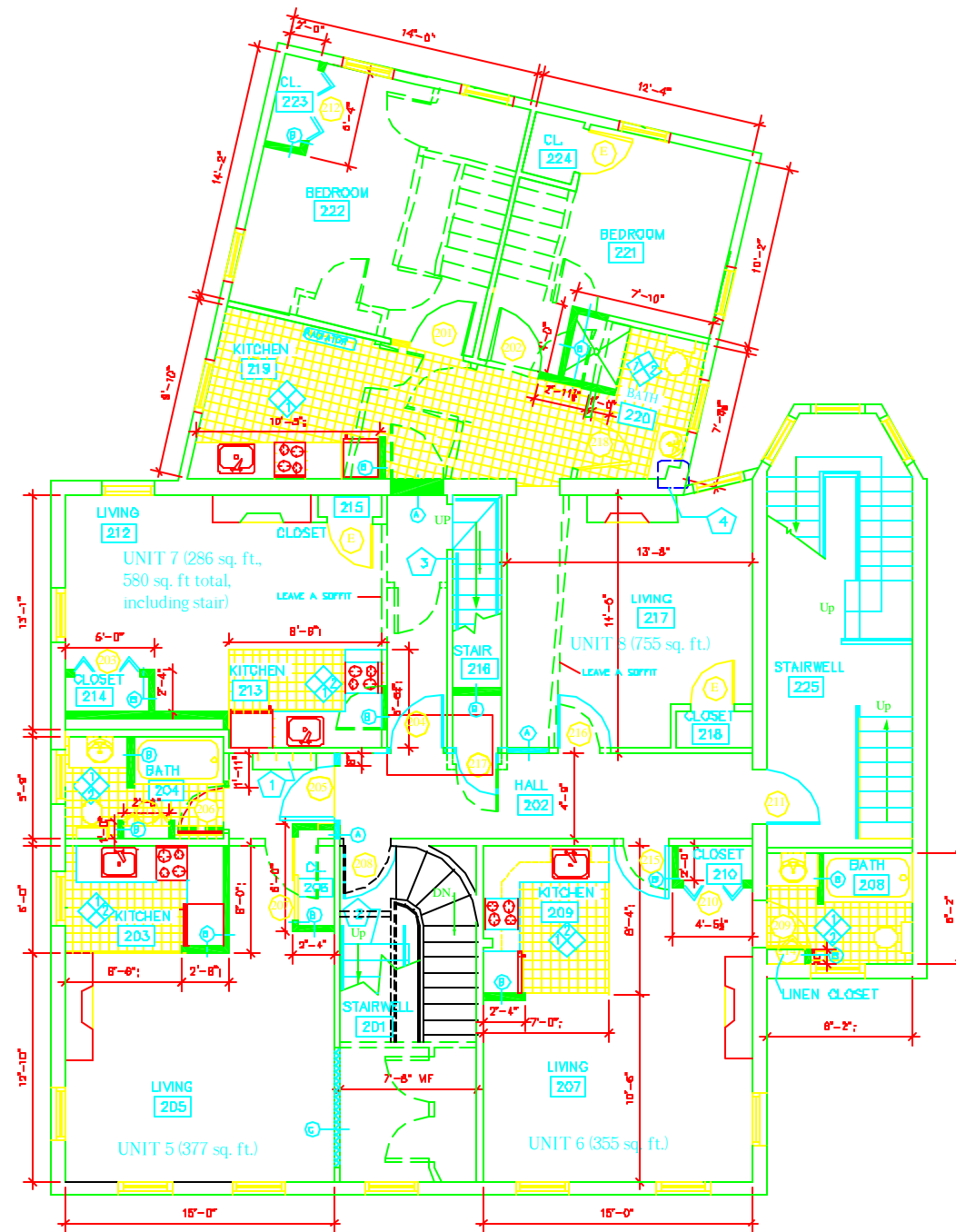
- NEW WALL 
- NEW 1 HR. RATED WALL 
- WALLS & ITEMS TO BE REMOVED 
- DOOR TO BE REMOVED 
- NEW DOOR - SEE DOOR SCHEDULE 
- EXISTING FIREPLACE TO REMAIN 
- INDICATES INTERIOR ELEVATIONS - REFER TO DRAWING A11 

**KEYED NOTES:**

- 1 PROVIDE WOOD SHELF - PTD. AND (4) BRASS-PLATED COAT HOOKS @ 4'-6". 
- 2 NEW STAIRS FROM SECOND FLOOR TO THIRD FLOOR. - SEE DRAWINGS A8, A2a, A2b, A2c, FOR ADDITIONAL INFORMATION.
- 3 UNIT 7 INTERNAL STAIRWELL 216 - WOOD HANDRAILS BOTH SIDES.
- 4 G.B. PIPE CHASE FOR 1 1/2" DIA. VENT PIPE - PTD. FRAME WITH 2X4 FLAT TO MINIMIZE CHASE SIZE, COORDINATE WITH PLUMBING DRAWINGS.

**GENERAL NOTES:**

SEE DRAWING A3 FOR WALL TYPES.



**SECOND FLOOR PLAN**  
1/4" = 1'-0" 

**ARCHETYPE, P.A.**  
**ARCHITECTS**  
48 Union Wharf Portland, Maine 04101  
(207) 772-6022 Fax (207) 772-4056

**Project:**  
**90 - 92 HIGH STREET**  
**RENOVATIONS**  
90 - 92 HIGH STREET  
PORTLAND, MAINE

Date	Scale 1/4" = 1'	Drawn By	Checked By	
				<b>Revisions</b>

SECOND FLOOR PLAN

**A4**