

DEMOLITION NOTES:
1. REMOVE EXISTING RISERS, CONCRETE FILLED TREAD PANS AND CONCRETE LANDINGS (LEVELS A, B & C). SALVAGE ALL TREAD COVERS AND STORE IN LOCATION DIRECTED BY OWNER.
2. EXISTING STRINGERS, HANDRAILS AND LANDING SUPPORTS ARE TO REMAIN (ALL LEVELS).
3. REMOVE AND TEMPORARILY SUPPORT ELECTRICAL CONDUIT/BOXES, LIGHTS AND LIGHT GUARDS FROM THE UNDERSIDE OF LANDINGS. REINSTALL AFTER COMPLETION OF WORK.

STAIR TOWER #4 PAINTING NOTES:
1. REFERENCE DRAWING S0 AND SPECIFICATIONS FOR ADDITIONAL PAINTING AND SURFACE PREPARATION REQUIREMENTS.
2. ALL EXPOSED STEEL WITHIN STAIR TOWER IS TO BE PREPARED AND PAINTED INCLUDING BUT NOT LIMITED TO STAIR FRAMING, HANDRAILS, GUARDRAILS, STEEL ATTACHMENTS TO THE CURTAIN WALL AND MISCELLANEOUS EXPOSED STRUCTURAL STEEL. THE STEEL RISERS AND LANDING PANS TO REMAIN AT LEVELS D & E ARE TO BE PREPARED AND PAINTED.
3. PREP AND PAINT STAIR FRAMING AFTER INSTALLATION OF NEW STEEL SUPPORTS BUT PRIOR TO THE INSTALLATION OF PRECAST TREADS, STAINLESS STEEL RISERS AND PLACEMENT OF CIP LANDINGS.
4. ALL STAND AND DRAIN PIPES ARE TO BE PREPARED AND PAINTED.
5. THE LOOSE AND UNADHERED PAINT OF THE STARTOWER WALLS, CEILINGS AND UNDERSIDE OF STAIR LANDINGS IS TO BE REMOVED BUT ARE NOT SCHEDULED TO BE PAINTED (THIS TOWER ONLY).

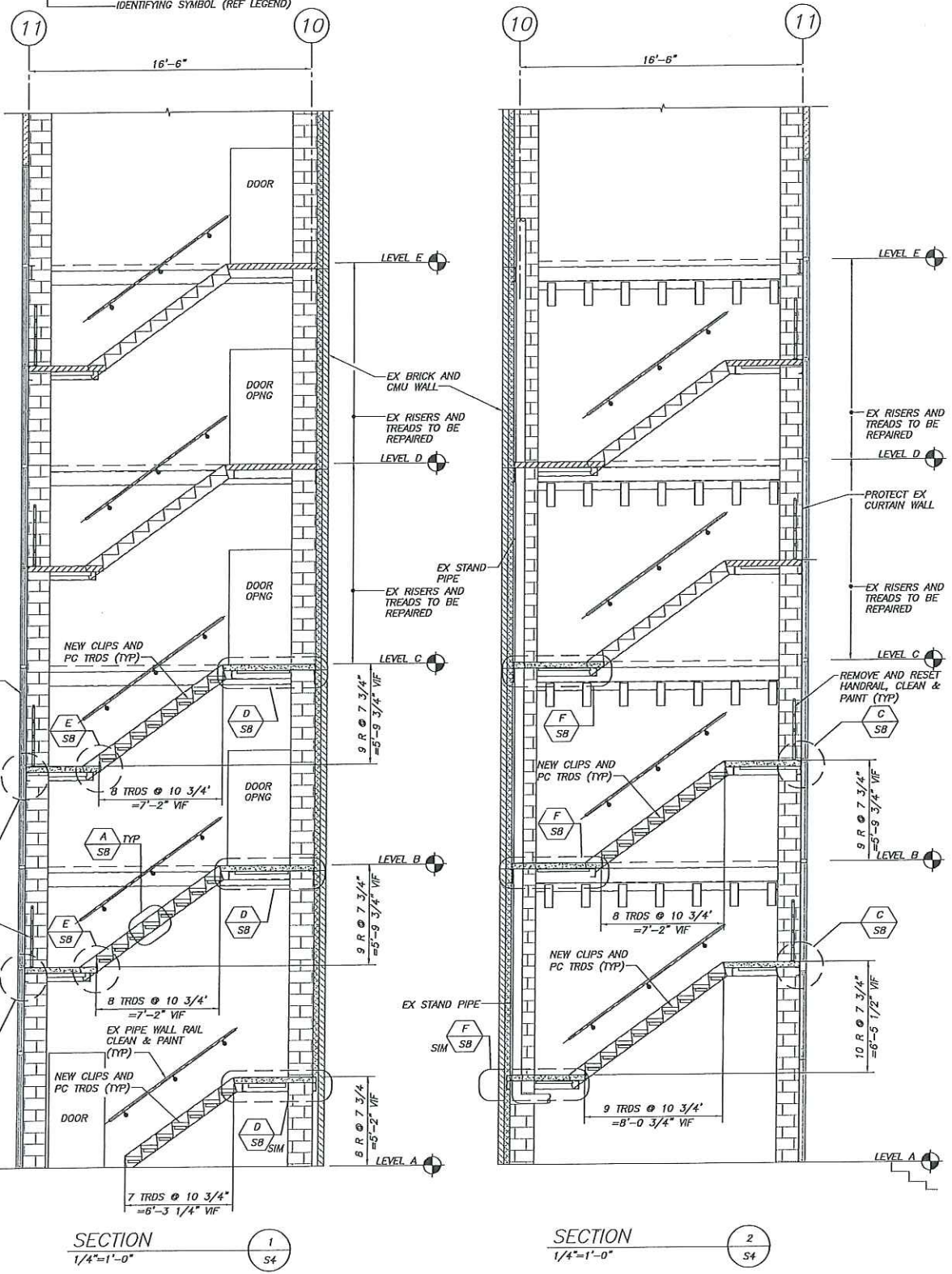
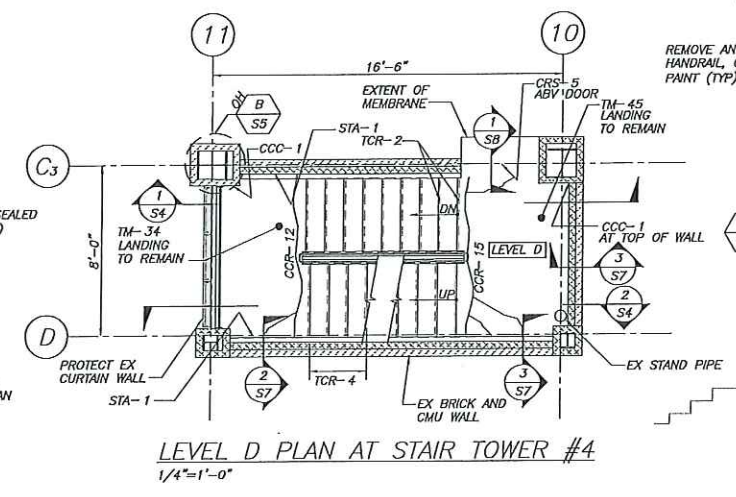
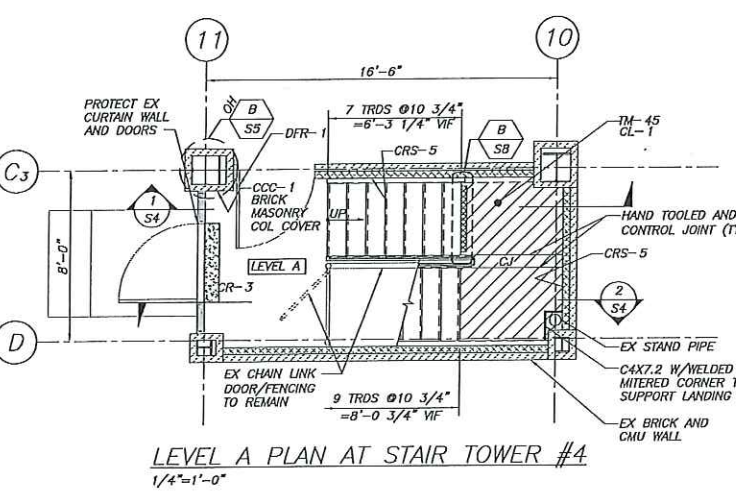
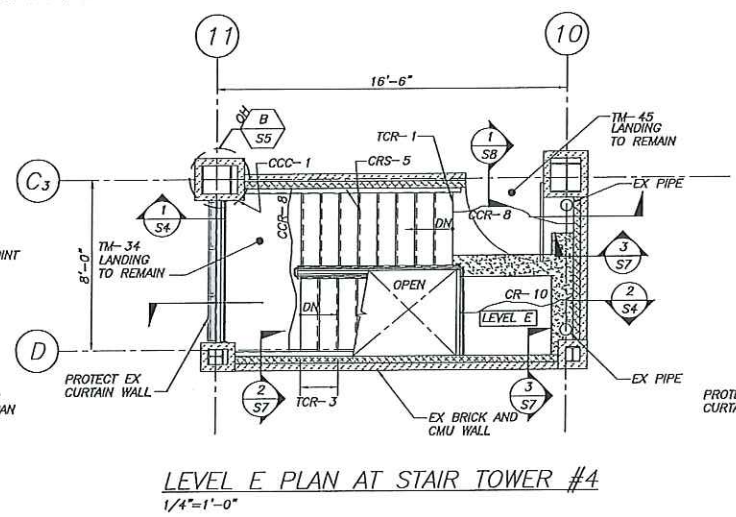
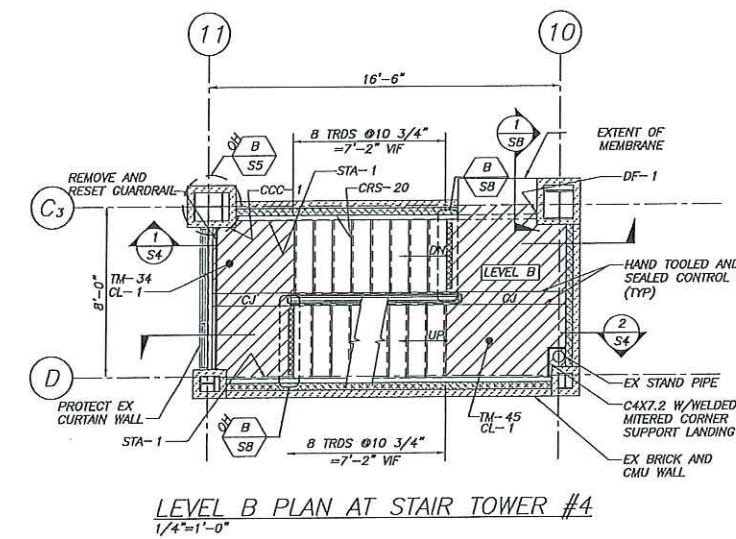
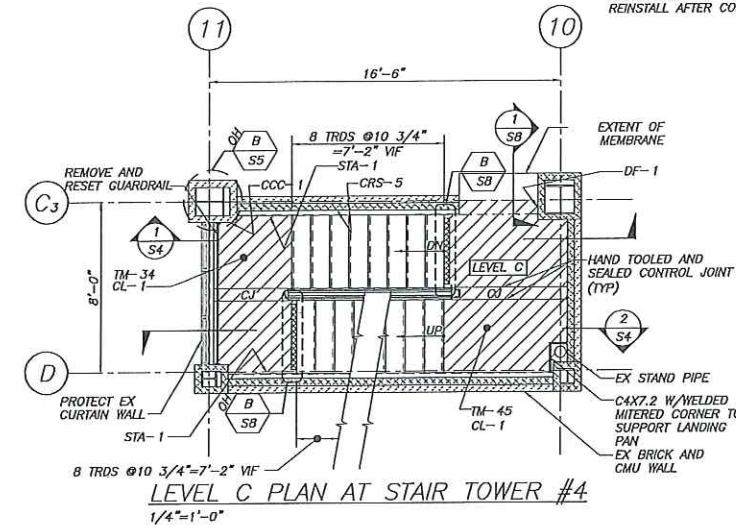
LEGEND
— CRACK CHASE REPAIR
[Hatched] CONCRETE LANDING REPAIR
[Diagonal Lines] STAIR LANDING REPLACEMENT
[Cross-hatched] OVERHEAD SPALL REPAIR
[Dotted] CMU WALL
[Brick Pattern] BRICK MASONRY WALL

WORK CODE LEGEND
PC-13-20
[Symbol] QUANTITY
[Symbol] WORK CODE INDICATOR
[Symbol] IDENTIFYING SYMBOL (REF LEGEND)

SCOPE OF WORK - STAIR #4

ITEM	WORK CODE	DESCRIPTION	QUANTITY	UNIT	NOTES
1		DEMOLITION OF LANDINGS AND TREADS (LEVELS A-C)	5	FLIGHTS	REF DWG S8
2		PRECAST CONCRETE TREADS (INCLUDING SUPPORTING STL)	40	EA	REF DWG S8
3	CL	NEW FIBER REINF CIP CONCRETE LANDINGS	5	LANDINGS	REF DWG S8
4		PREP AND PAINT STEEL STAIR FRAMING	1	STAIRWAY	REF DWG S0
5	TM	PEDESTRIAN MEMBRANE AT LANDINGS	380	SF	REF DWG S6
6	DF	DOOR FRAME REMOVAL AND JAMB REPAIR	2	EA	REF DWG S7
7	STA	REPLACE LANDING SUPPORT ANGLE	6	EA	REF DWG S7
8	TCR	TREAD COVER REMOVAL/REINSTALL AND TREAD REPAIR	10	EA	REF DWG S7
9	CR	CONCRETE REPAIR	20	SF	REF DWG S5
10	CCR	CRACK CHASE REPAIR	45	LF	REF DWG S5
11	CCC	COLUMN COVER CMU REPLACEMENT	6	COVERS	REF DWG S5
12	CRS	ROUT/SEAL CMU CRACK	50	LF	REF DWG S5
13	CSJ	CUT OUT AND REPLACE MASONRY CONTROL JOINT	45	LF	REF DWG S5
14	SC	CUT AND REPLACE CURTAIN WALL TO CMU JOINT SEALANT	45	LF	REF DWG S5
15	DFR	REPLACE DOOR AND FRAME AT LVL A	1	EA	REF DWG S7

NOTES:
1. QUANTITIES SHOWN IN THE SCHEDULE ABOVE MAY BE GREATER THAN WHAT ARE SHOWN ON THE PLAN.
2. ALL QUANTITIES SHOULD BE FIELD VERIFIED.



THIS DRAWING IS AN INSTRUMENT OF SERVICE AND SHALL REMAIN THE PROPERTY OF BECKER STRUCTURAL ENGINEERS INC. IT SHALL NOT BE REPRODUCED, COPIED, LENT OR DISPOSED OF DIRECTLY OR INDIRECTLY FOR ANY PURPOSE OTHER THAN FOR WHICH IT IS SPECIFICALLY FURNISHED AND MUST BE RETURNED TO BECKER STRUCTURAL ENGINEERS INC. ON COMPLETION OF WORK IF REQUESTED.

**SPRING STREET PARKING GARAGE
PORTLAND, MAINE
STAIR REPAIRS**

STAIR #4 PLANS AND SECTIONS

Project	
Issue For	11/30/17 FOR BID
Date	11/30/17
Rev No	1

Designed	JMM	Scale	AS NOTED
Drawn	RJB	Date	11/30/17
Checked	JMM	Becker Job Number	4198

S4