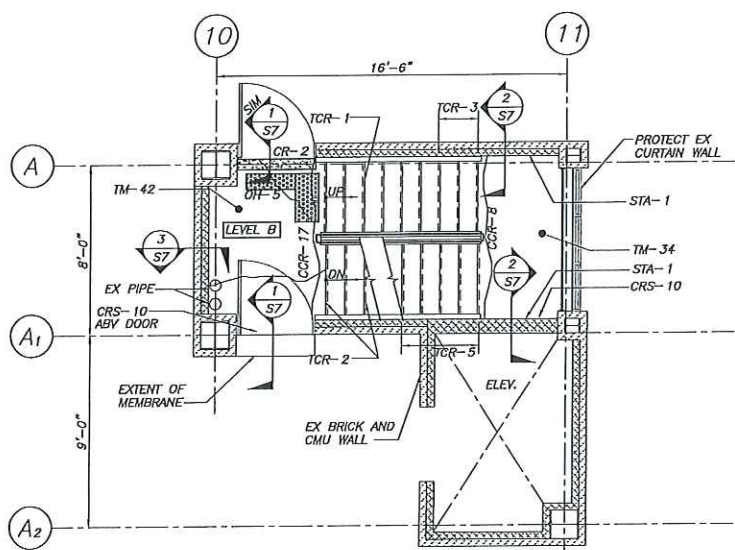
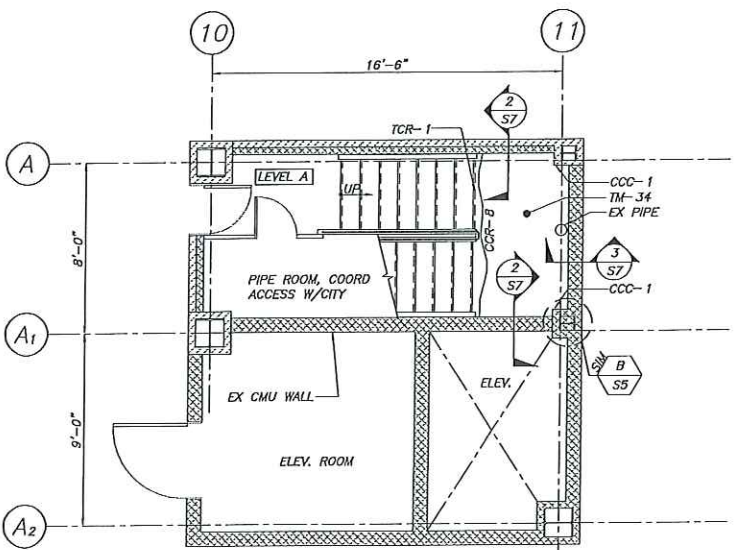


LEVEL C PLAN AT STAIR TOWER #2  
1/4"=1'-0"



LEVEL B PLAN AT STAIR TOWER #2  
1/4"=1'-0"



LEVEL A PLAN AT STAIR TOWER #2  
1/4"=1'-0"

**SCOPE OF WORK - STAIR #2**

| ITEM | WORKCODE | DESCRIPTION   | QUANTITY | UNIT     | NOTES      |
|------|----------|---|----------|----------|------------|
| 1    | DF       | DOOR FRAME REMOVAL AND JAMB REPAIR                    | 2        | EA       | REF DWG S7 |
| 2    | STA      | REPLACE LANDING SUPPORT ANGLE                         | 6        | EA       | REF DWG S7 |
| 3    | TCR      | TREAD COVER REMOVAL/REINSTALL AND TREAD REPAIR        | 25       | EA       | REF DWG S7 |
| 4    | TM       | PEDESTRIAN MEMBRANE AT LANDINGS                       | 405      | SF       | REF DWG S6 |
| 5    | CR       | CONCRETE REPAIR                                       | 50       | SF       | REF DWG S5 |
| 6    | CCR      | CRACK CHASE REPAIR                                    | 75       | LF       | REF DWG S5 |
| 7    |          | PREP AND PAINT STEEL STAIR FRAMING                    | 1        | STAIRWAY | REF DWG S0 |
| 8    |          | PAINT WALLS AND CEILING                               | 3,300    | SF       | REF DWG S0 |
| 9    | CCC      | COLUMN COVER CMU REPLACEMENT                          | 2        | COVERS   | REF DWG S5 |
| 10   | CRS      | ROUT/SEAL CMU CRACK                                   | 55       | LF       | REF DWG S5 |
| 11   | CSJ      | CUT OUT AND REPLACE MASONRY CONTROL JOINT             | 25       | LF       | REF DWG S5 |
| 12   | SC       | CUT AND AND REPLACE CURTAIN WALL TO CMU JOINT SEALANT | 45       | LF       | REF DWG S5 |
| 13   | OH       | OVERHEAD SPALL REPAIR                                 | 10       | SF       | REF DWG S5 |
| 14   | DFR      | REPLACE DOOR AND FRAME AT LVL D                       | 1        | EA       | REF DWG S7 |

NOTES:  
1. QUANTITIES SHOWN IN THE SCHEDULE ABOVE MAY BE GREATER THAN WHAT ARE SHOWN ON THE PLAN.  
2. ALL QUANTITIES SHOULD BE FIELD VERIFIED.

**LEGEND**

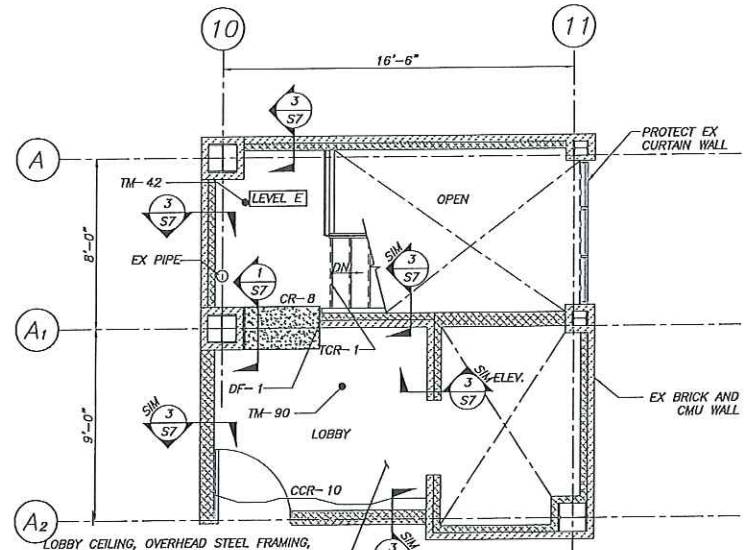
- CRACK CHASE REPAIR
- ▒ CONCRETE LANDING REPAIR
- ▨ STAIR LANDING REPLACEMENT
- ▩ OVERHEAD SPALL REPAIR
- ▧ CMU WALL
- ▦ BRICK MASONRY WALL

**WORK CODE LEGEND**

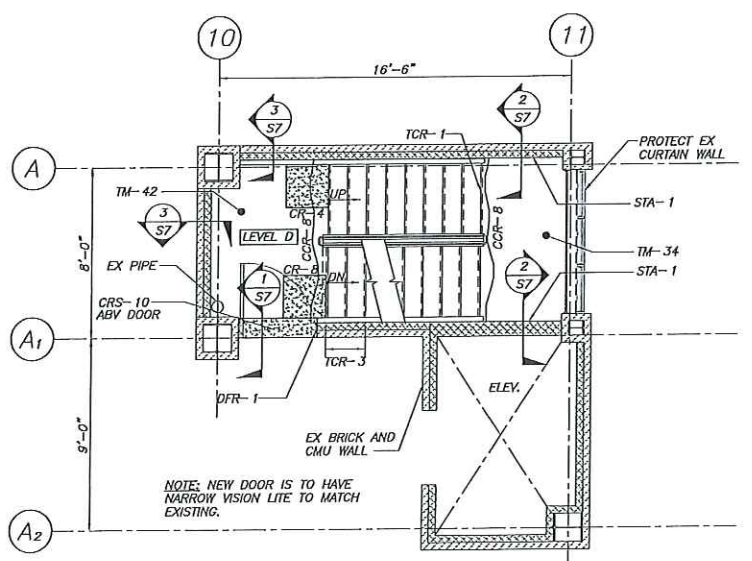
- PCJ3-20
- QUANTITY
- WORK CODE INDICATOR
- IDENTIFYING SYMBOL (REF LEGEND)

**STAIR TOWER #2 PAINTING NOTES:**

- REFERENCE DRAWING S0 AND SPECIFICATIONS FOR ADDITIONAL PAINTING AND SURFACE PREPARATION REQUIREMENTS.
- ALL EXPOSED STEEL WITHIN STAIR TOWER IS TO BE PREPARED AND PAINTED INCLUDING BUT NOT LIMITED TO STAIR FRAMING, HANDRAILS, GUARDRAILS, STEEL ATTACHMENTS TO THE CURTAIN WALL AND MISCELLANEOUS EXPOSED STRUCTURAL STEEL.
- ALL STAND AND DRAIN PIPES ARE TO BE PREPPED AND PAINTED.
- THE STAIR TOWER WALLS AND CEILING ARE TO BE PAINTED. THE UNDERSIDE OF THE CONCRETE LANDINGS ARE TO BE SCRAPPED OF LOOSE PAINT AND REMAIN UNPAINTED.
- ELECTRICAL BOXES, LIGHTS AND EMERGENCY LIGHTS DO NOT NEED TO BE REMOVED AND CAN BE PAINTED AROUND. ELECTRICAL CONDUIT DOES NOT NEED TO BE REMOVED BUT SHOULD BE PAINTED TO MATCH THE WALLS. PROTECTION CAGES AROUND THE LIGHTS ARE TO BE REMOVED, PAINTED AND RESET.
- CONTRACTOR TO REMOVE AND REINSTALL ALL SIGNS ATTACHED TO THE WALL PRIOR TO PAINTING.



LEVEL E PLAN AT STAIR TOWER #2  
1/4"=1'-0"



LEVEL D PLAN AT STAIR TOWER #2  
1/4"=1'-0"

THIS DRAWING IS AN INSTRUMENT OF SERVICE AND SHALL REMAIN THE PROPERTY OF BECKER STRUCTURAL ENGINEERS INC. IT SHALL NOT BE REPRODUCED, COPIED, LOANED OR DISPOSED OF IN ANY MANNER WITHOUT THE WRITTEN CONSENT OF BECKER STRUCTURAL ENGINEERS INC. ON COMPLETION OF WORK, IF REQUESTED.

|             |                  |
|-------------|------------------|
| Revised For | 11/20/17 FOR BID |
| Date        | 11/20/17         |
| Rev. No     | 1                |

SPRING STREET PARKING GARAGE  
PORTLAND, MAINE  
STAIR REPAIRS  
STAIR #2 PLANS

|          |     |                   |          |
|----------|-----|-------------------|----------|
| Designed | JMM | Scale             | AS NOTED |
| Drawn    | RJB | Date              | 11/30/17 |
| Checked  | JMM | Becker Job Number | 4198     |