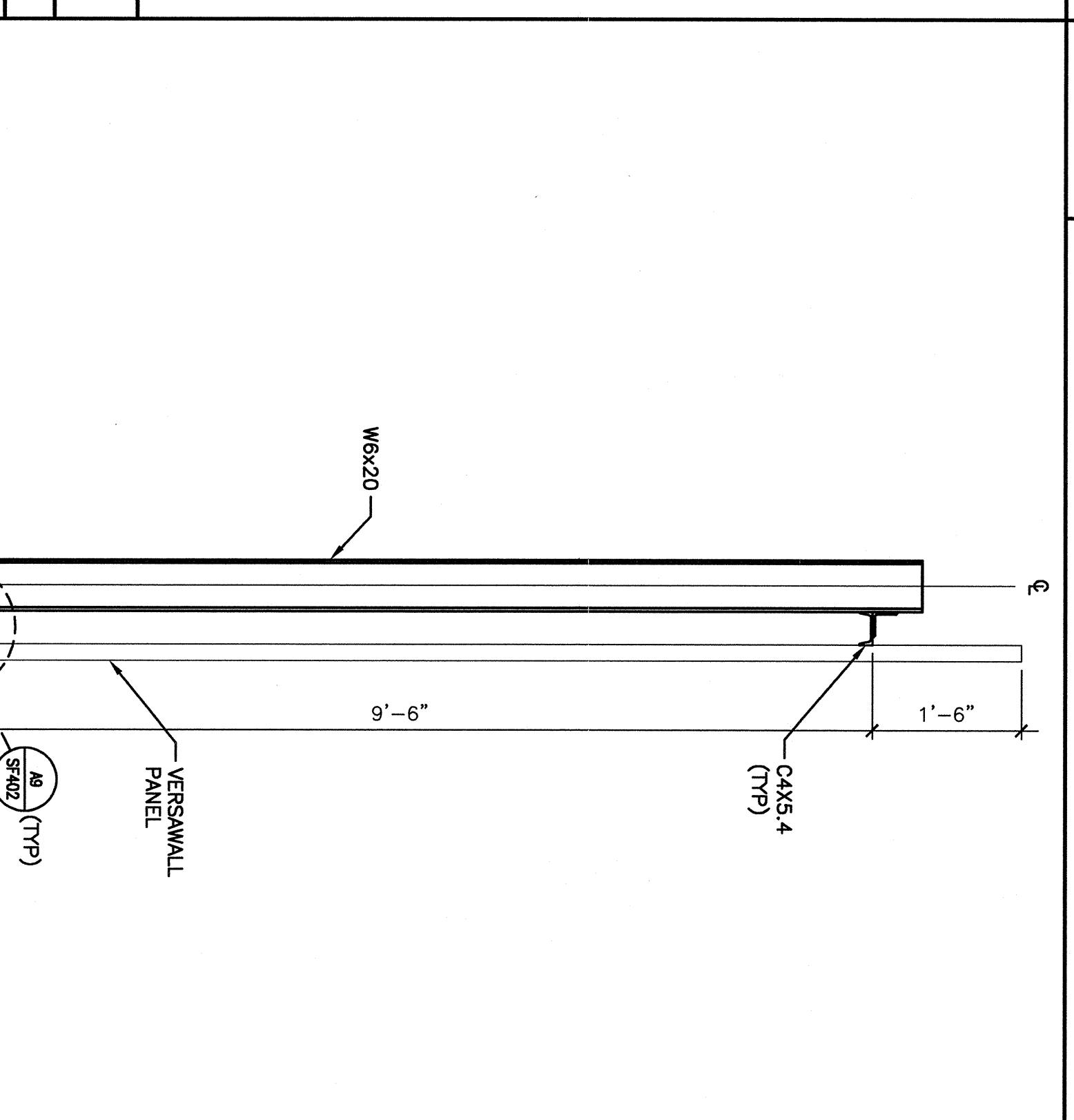
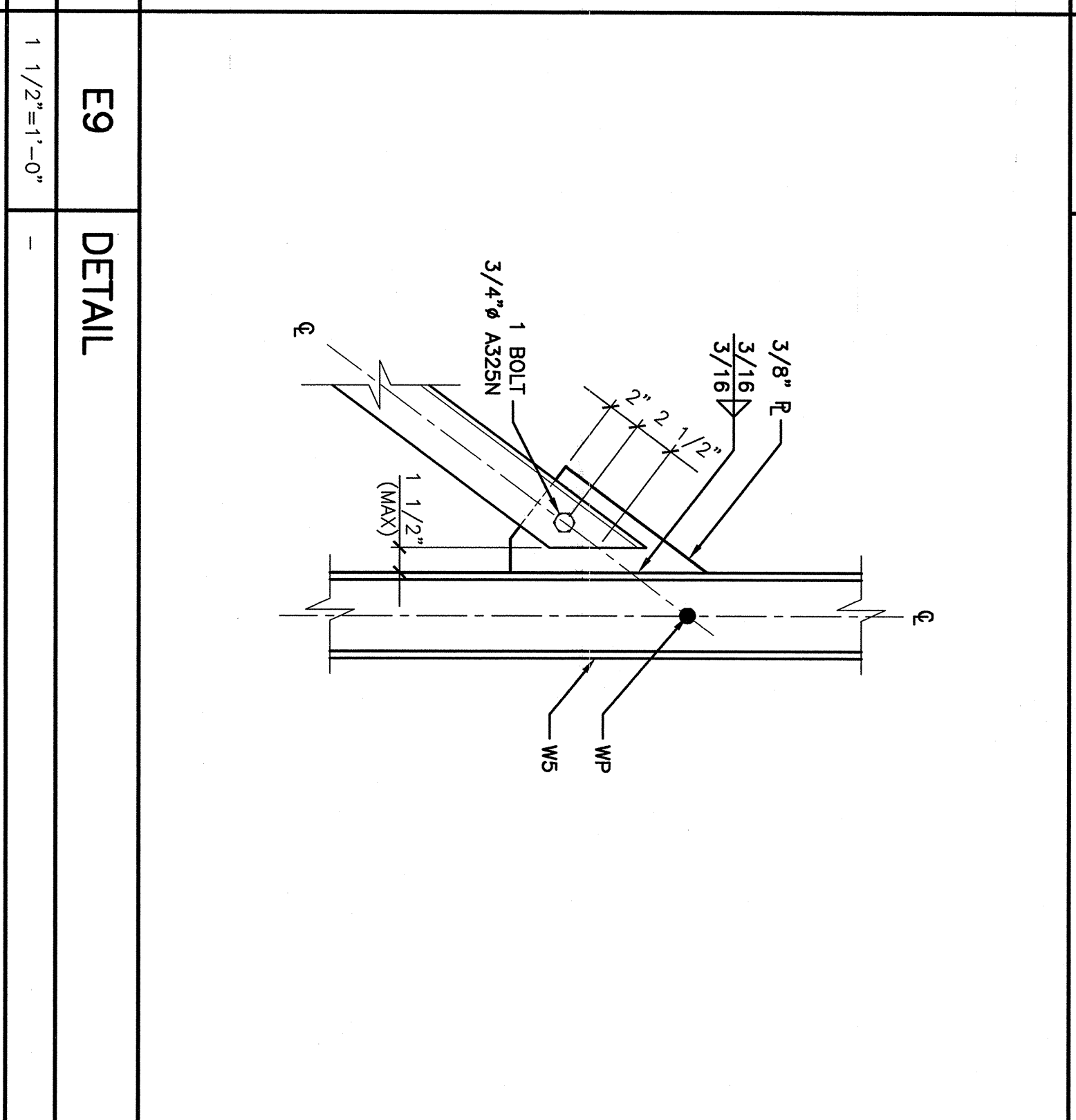
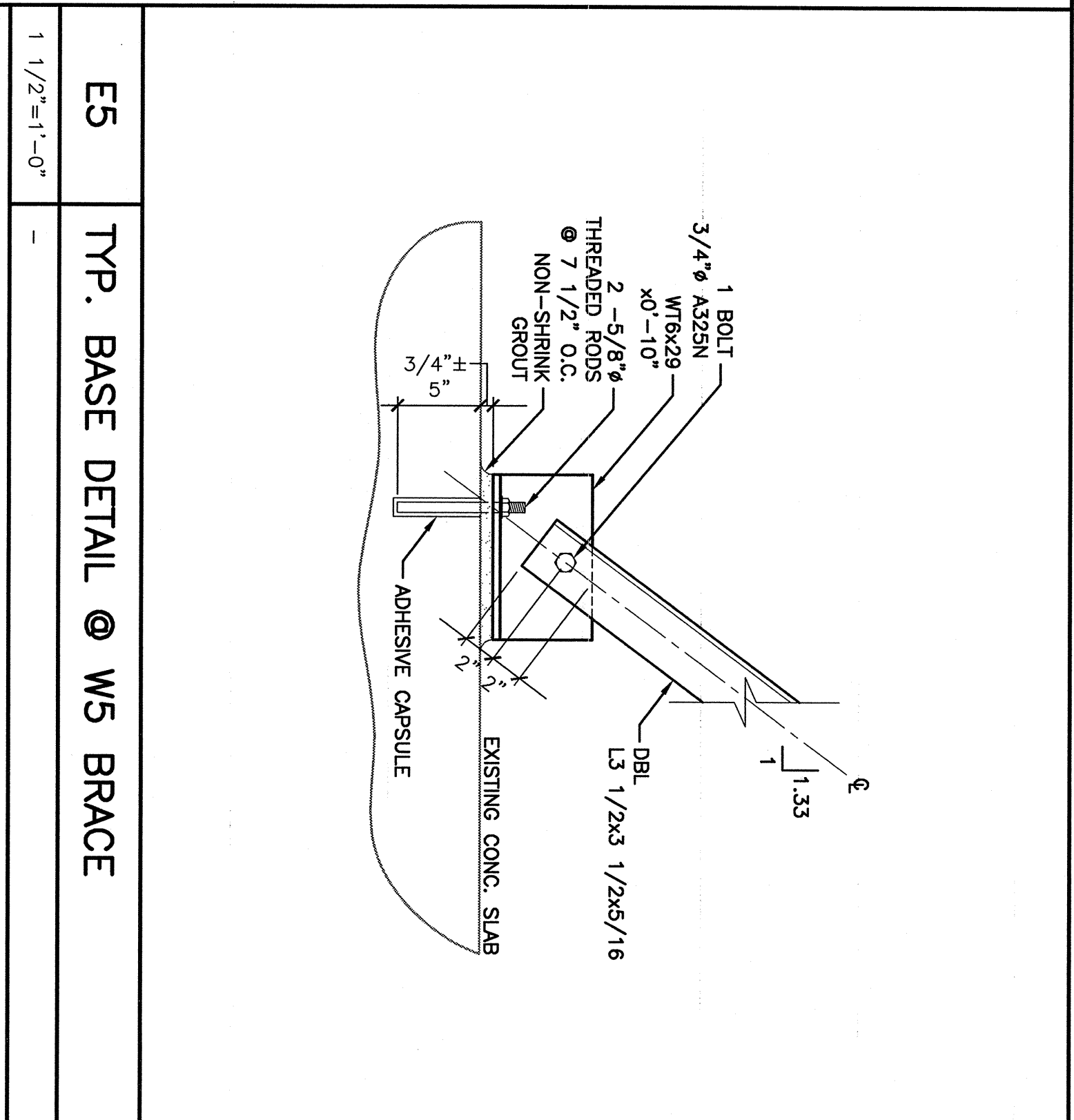
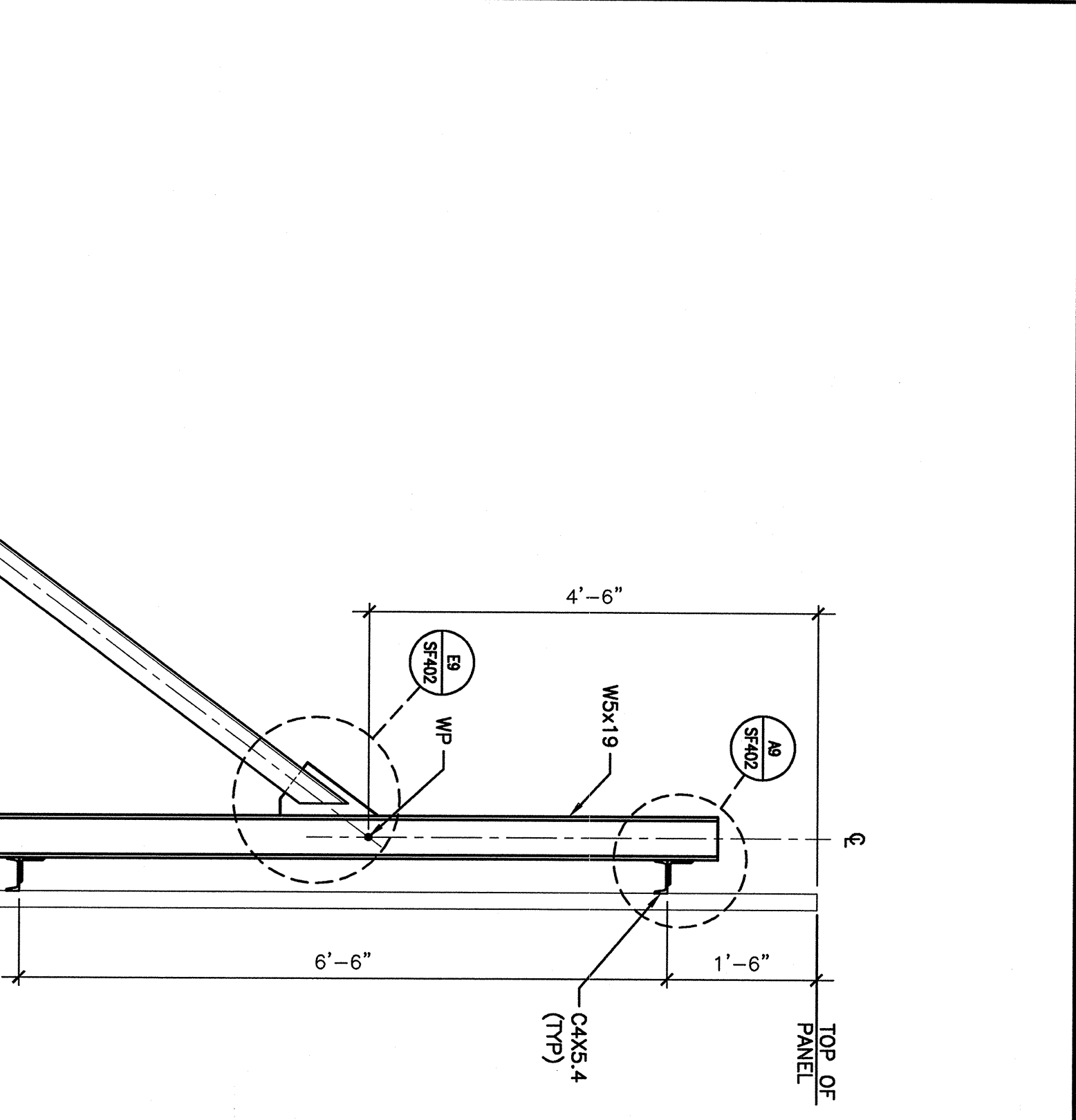
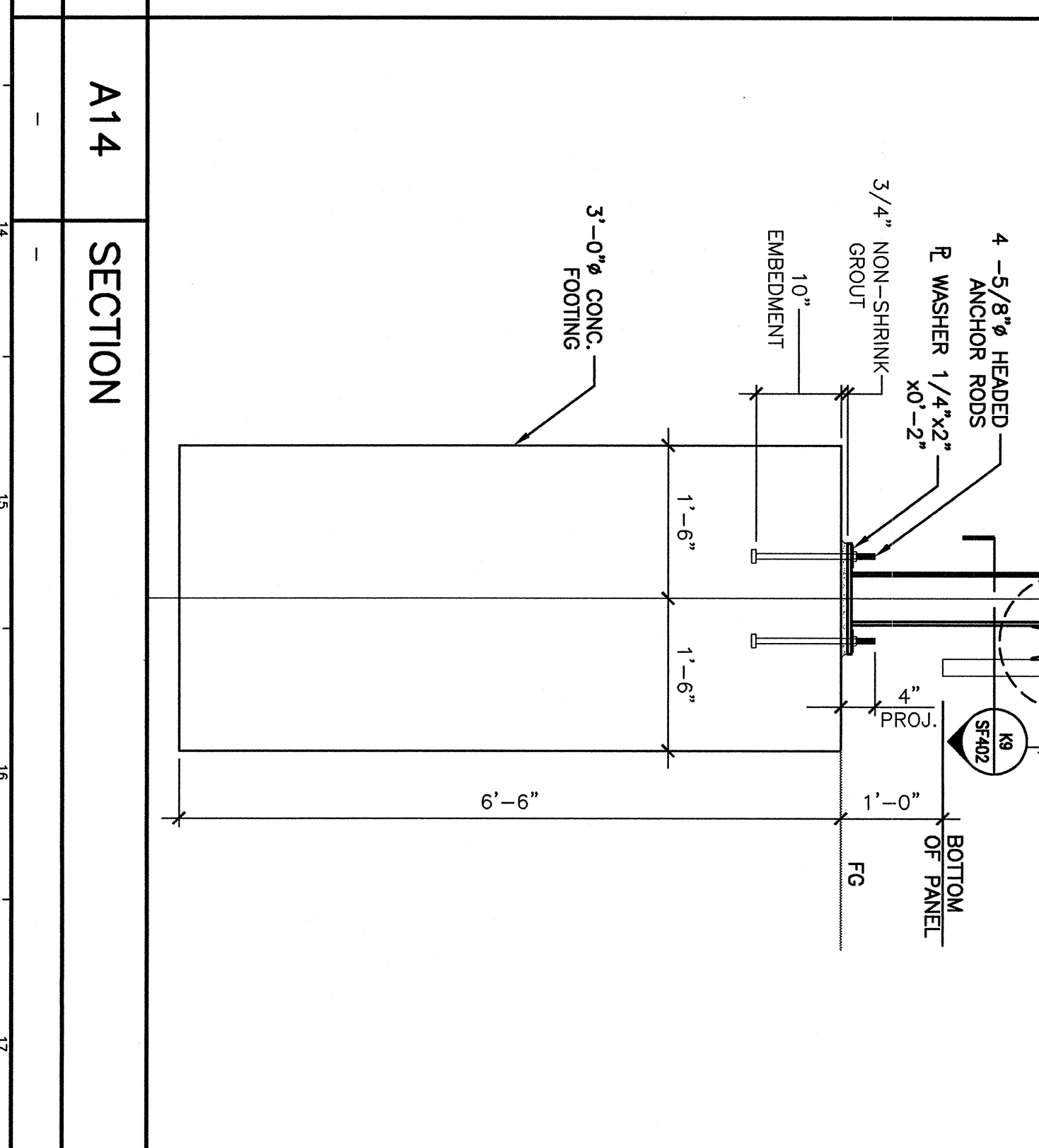
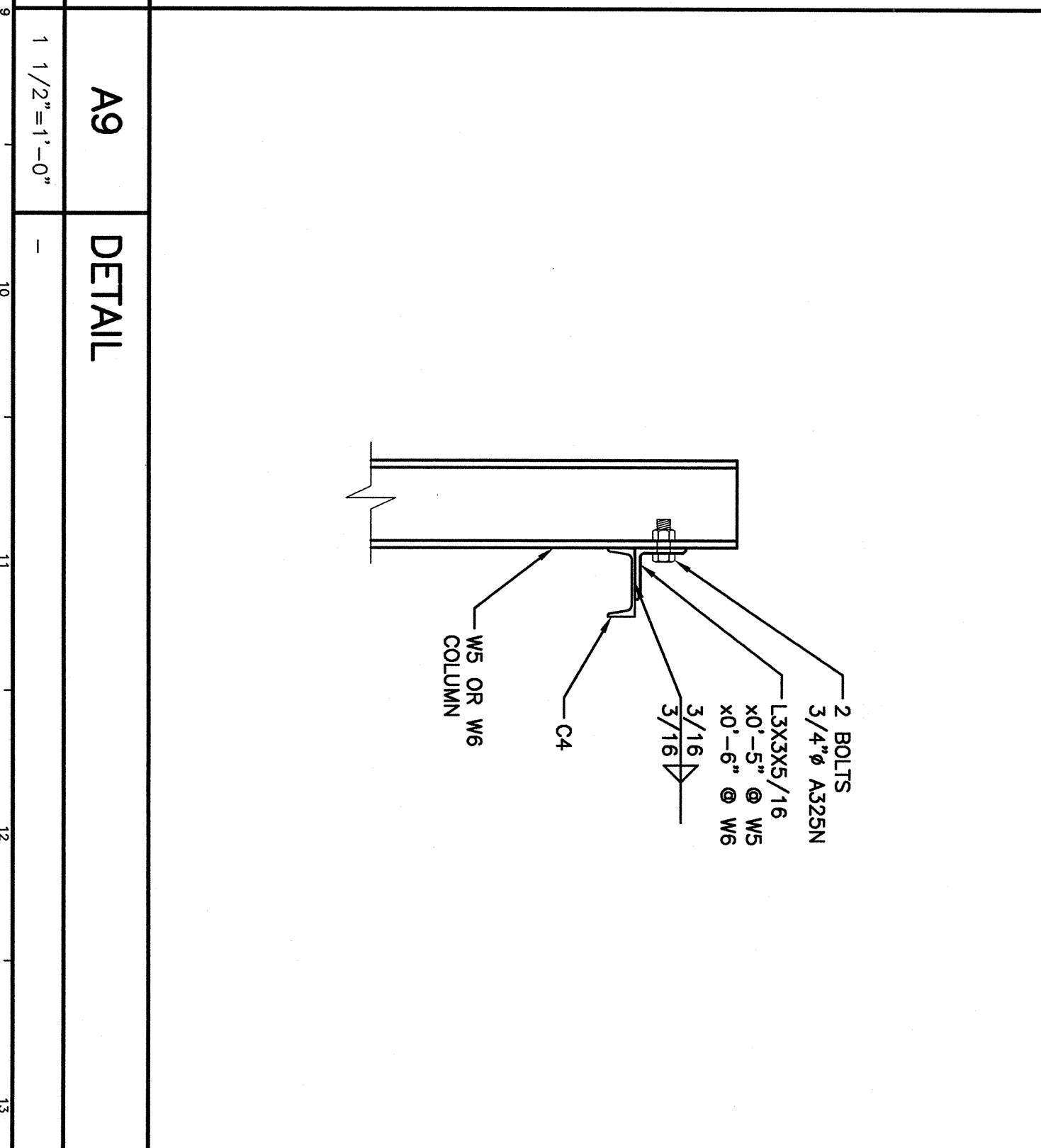
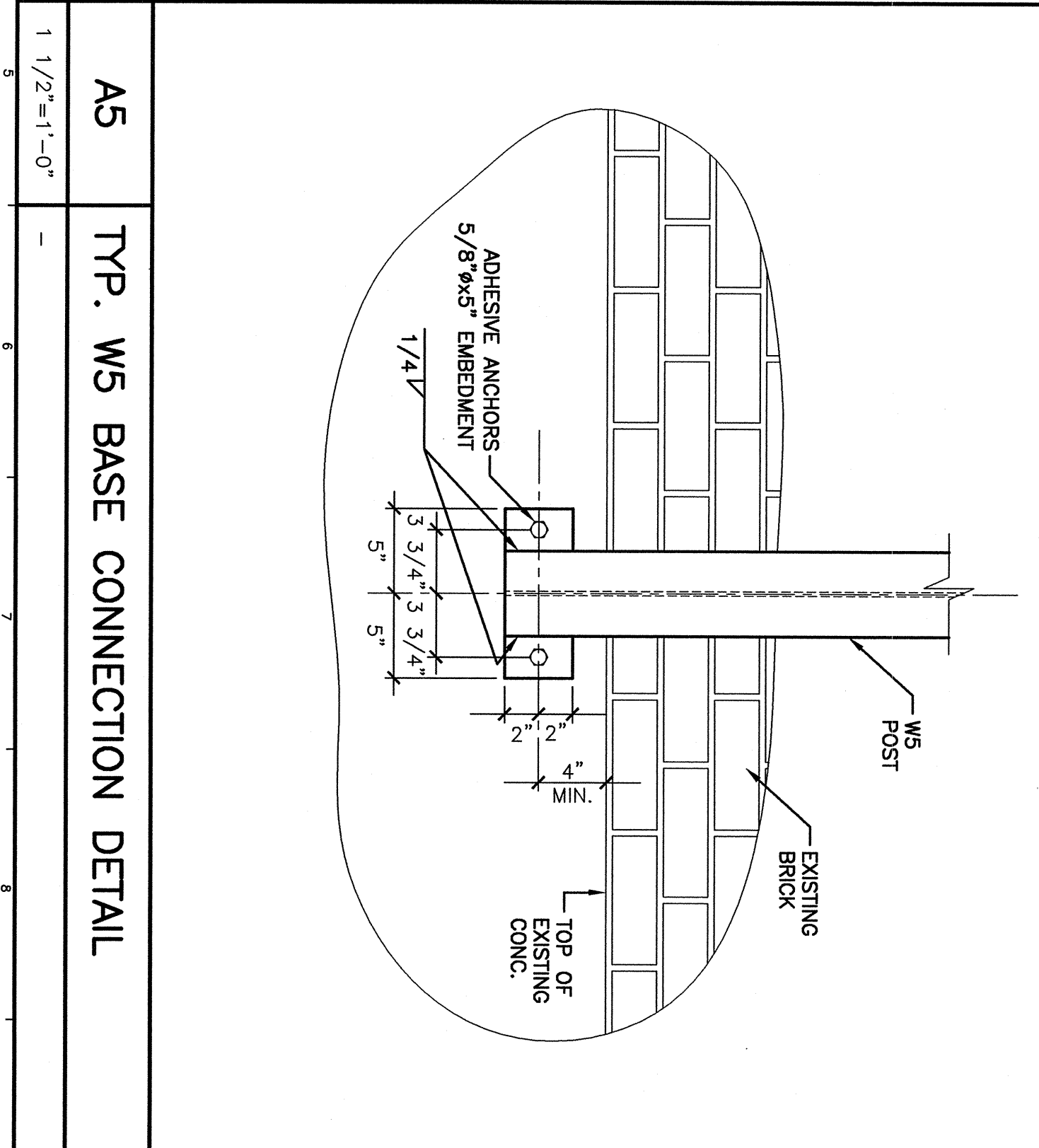
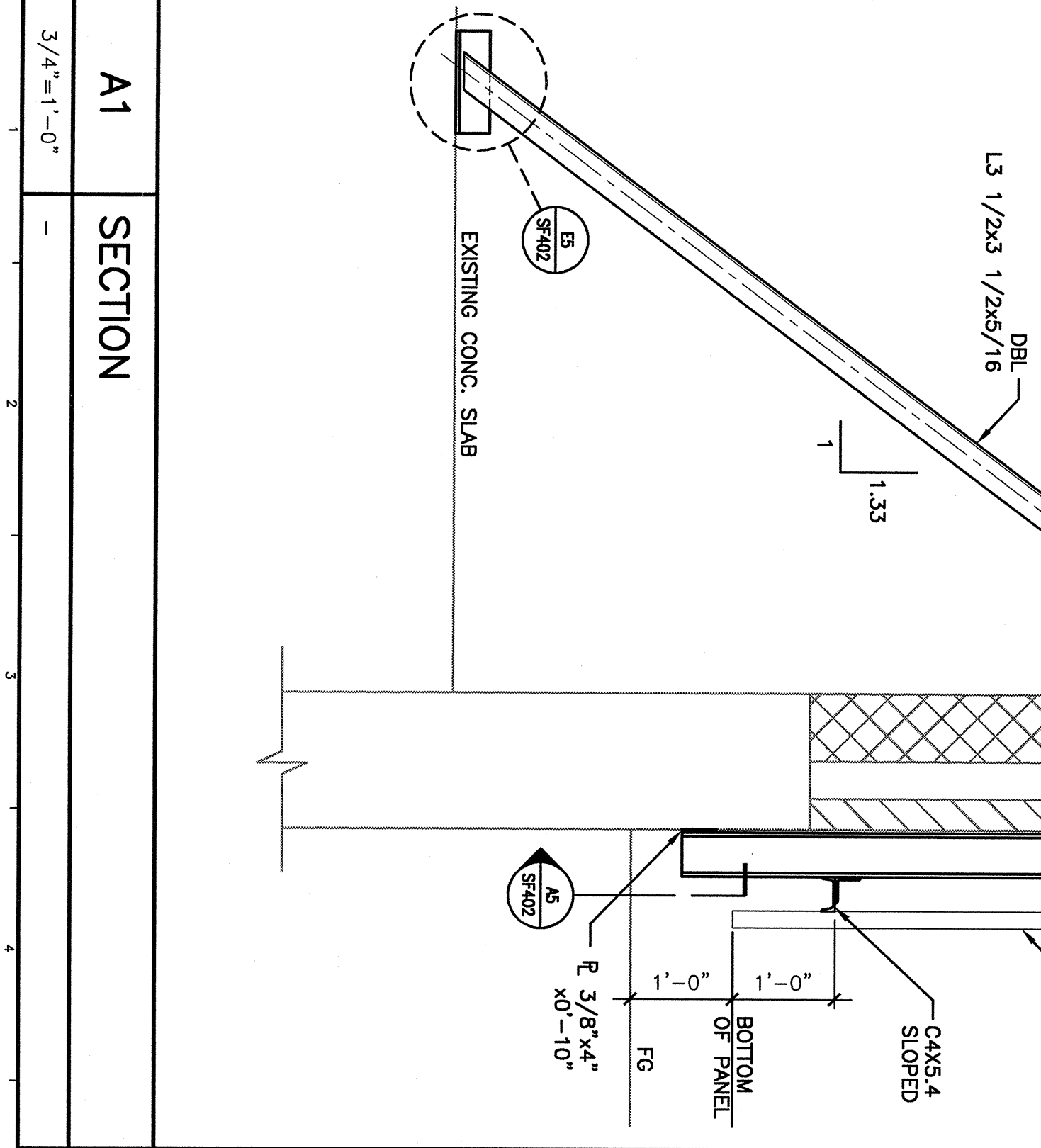


K1	LOADING DOCK WALL PANEL SUPPORT PLAN	1/4"=1'-0"
K9	SECTION	1/2"=1'-0"
K14	SECTION	-



0	ISSUED FOR PERMITTING	7-18-07
REV	DESCRIPTION	DATE
CURRENT ISSUE STATUS:		
ISSUED FOR PERMITTING		
07-18-07		

- NOTE:**
- ALL STRUCTURAL STEEL SHALL BE HOT-DIP GALVANIZED.
 - CONCRETE FOR FOOTINGS SHALL ATTAIN A MINIMUM 28-DAY COMPRESSIVE STRENGTH = 3000 PSI.
 - CONCRETE SHALL BE AIR ENTRAINED FOR SEVERE WEATHER. AIR ENTRAINMENT W/ ADI 501 WITH A TOLERANCE OF ±1.5%.
 - MAINTAIN CONCRETE CONTINUOUSLY MOIST W/ PLACEMENT.
 - CONCRETE FOOTINGS MAY BE 3'-0" DIAMETER IF ACCEPTABLE WITH THE MINIMUM DIAMETER INCREASED TO 3'-2".
 - COMPLY W/ REQUIREMENTS OF ACI 318 AND ACI 301.



SM RT
ARCHITECTURE ENGINEERING PLANNING

144 Free Street, 6th Floor
Portland, Maine 04104
Tel: (207) 773-3446
Fax: (207) 773-1000

PROJECT:
EXTERIOR IMPROVEMENTS &
MODEL TENANT FIT-UP
110 FREE STREET
PORTLAND, MAINE

FRAMING PLANS
AND DETAILS

SHEET TITLE: AS NOTED DATE: _____

PROJECT MANAGER: JIH GRAPHIC SCALE: 0" = 1'-0"

JOB CAP/DRAWN: APF

CHECKED/RECORDED: MJC

SMRN CAD FILE: SF402-07087

PROJECT NO: 07087

SHEET NO: **SF402**