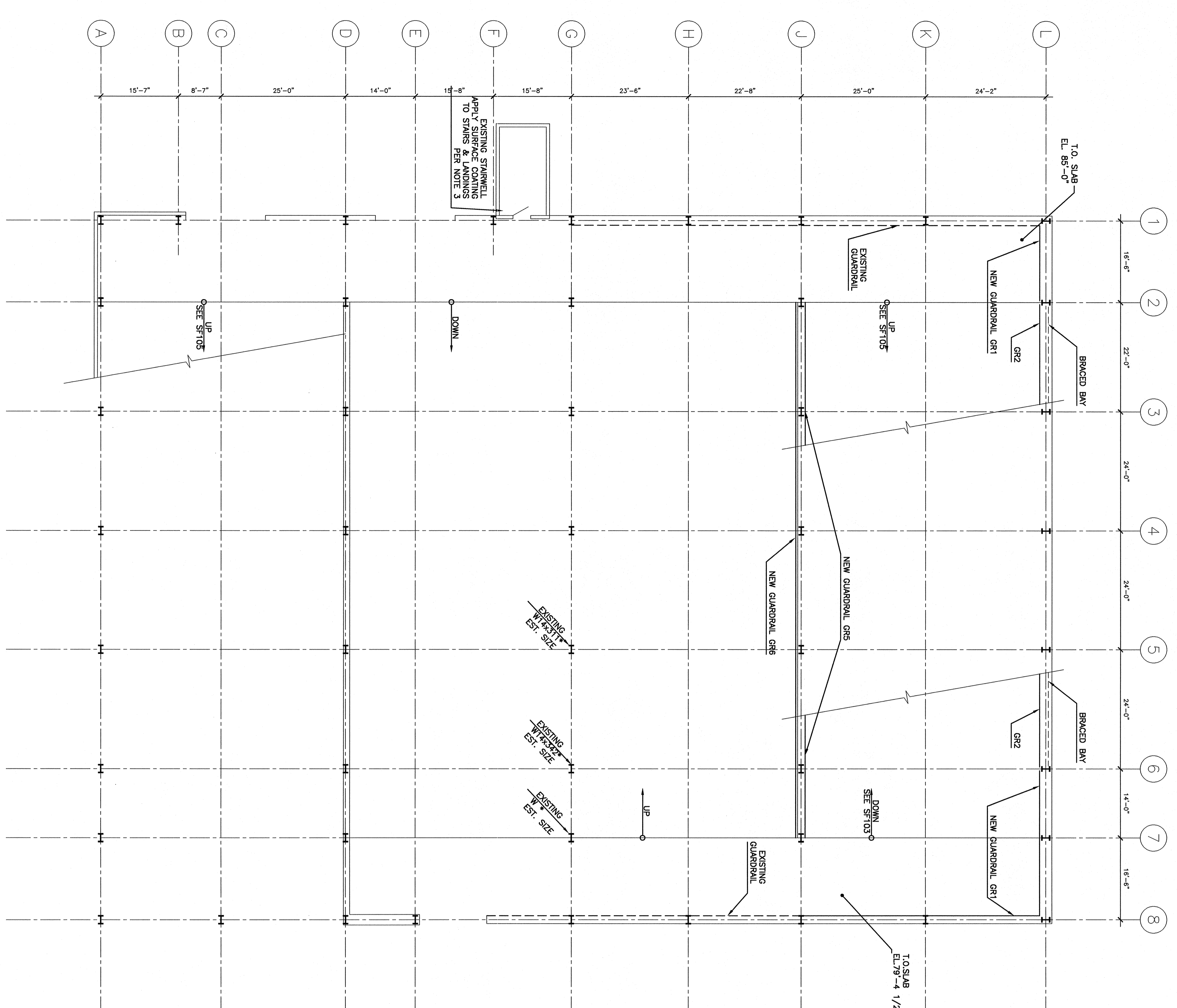


**NOTES:**

1. NEW GUARDRAIL TYPES  
 GR1 - WIDE FLANGE W12x22 GUARDRAIL FASTENED TO EXISTING W6 POSTS. WHERE CANTILEVERED ENDS EXTEND MORE THAN 1'-0" BEYOND LAST POST, CONNECT TO EXISTING W6 POSTS. SEE SECTION J1/SF501 FOR DETAILS UNLESS OTHERWISE NOTED.  
 GR2 - SAME AS GUARDRAIL GR1 EXCEPT USE W12x30 BEAM. THIS SECTION IS INTENDED TO APPLY ONLY WHERE EXISTING DIAGONAL BRACING INTERFERES W/ W6 POSTS.  
 GR3 - FLR-BEAM GUARDRAIL (109) PER AISC90 SPECIFICATION W/ 180 ATTACHED TO W6x16 POSTS. POSTS MAY BE DRIVEN INTO EXISTING PAVEMENT/SOIL OR SET IN PLACE BY EXCAVATION & BACKFILL. SEE ELEVATION J5/SF501  
 GR4 - WIDE FLANGE W12x22 GUARDRAIL FASTENED TO W6x16 POSTS ANCHORED TO EXISTING SLAB. SEE SECTION E1/SF501. THIS GUARDRAIL INCLUDES PEDESTRIAN PROTECTION IN ADDITION TO VEHICLE PROTECTION.  
 GR5 - WIRE ROPE GUARDRAIL @ RAMP. PROVIDE 4 @ 3/4" & 6 @ 1/4" WIRE ROPE SHALL BE 6x19MWC EXTRA IMPROVED PLOW STEEL. WIRE ROPE & FITTINGS SHALL BE DRILLED HOLES AS SPECIFIED FOR COLUMN REPAIRING @ LOWER LEVELS OF COL. G5 & G6. SEE SECTION J14/SF501 & TYPICAL TERMINATION DETAIL E14/SF501.  
 GR6 - SAME AS GR5 EXCEPT WIRE ROPE IS SECURED TO STEEL PLATES WELDED TO EXISTING COLUMNS. SEE SECTION N1/SF502 FOR TYPICAL DETAIL & SECTION J1/SF502 FOR DETAIL @ TERMINATION.
2. DIMENSIONS & MEMBER SIZES ARE ESTIMATIONS BASED ON PREVIOUSLY PREPARED DOCUMENTS & FIELD MEASUREMENTS.
3. AT STAIRS INSTALL GENERAL POLYMERS EPO-FLEX PEDESTRIAN TOPPING SYSTEM AS FOLLOWS:  
 A. PREPARE CONCRETE SURFACES BY ABRASIVE BLAST CLEANING TO ATTAIN A CONCRETE SURFACE PROFILE CSP 3-5 AS SPECIFIED BY THE INTERNATIONAL CONCRETE REPAIR CODE AND OTHER DEFECTS AS RECOMMENDED BY THE MANUFACTURER.  
 B. CLEAN STEEL RISERS AND NOSINGS BY WIRE BRUSH OR OTHER METHODS AS REQUIRED TO REMOVE RUST.  
 C. COMPLY WITH OTHER SURFACE PREPARATION AND METHODS OF APPLICATION AS SPECIFIED BY THE MANUFACTURER.  
 D. APPLY GENERAL POLYMERS 3579 PRIMER IN ACCORDANCE WITH THE MANUFACTURER'S INSTRUCTIONS. ALLOW PRIMER TO BECOME TACKY BEFORE APPLYING FIRST BASE COAT.  
 E. APPLY 2 COATS OF GENERAL POLYMERS 3555 EPO-FLEX HD EPOXY TO STAIR TREADS AND LANDING SURFACES. ALLOW CURING TIME BETWEEN COATS AS SPECIFIED BY THE MANUFACTURER. PERFORM SECOND COAT TO A MINIMUM THICKNESS OF 20 MILS. FRESH SECOND COAT TO A MINIMUM WET FILM THICKNESS OF 10 MILS.  
 F. BROADCAST GENERAL POLYMERS 5310 GRAY SLICK SAND (30 MESH) ONTO STAIR TREADS AND LANDING SURFACES WHILE SURFACE IS WET FROM THE SECOND COAT OF EPO-FLEX HD EPOXY. APPLY AGGREGATE WITHIN 1 HOUR OF APPLICATION OF SECOND COAT OF EPO-FLEX HD EPOXY.  
 G. ALLOW TO CURE 24 HOURS AND SWEEP OFF EXCESS AGGREGATE. SMOOTH HIGH SPOTS.  
 H. APPLY GENERAL POLYMERS 4818 HI-SOLIDS POLYURETHANE SEAL COAT TO ALL STAIR TREADS, RISERS, AND LANDING SURFACES. ALLOW SEAL COAT TO CURE FOR 24 HOURS PRIOR TO OPENING TO TRAFFIC.  
 I. COLUMNS INDICATED \* REQUIRE CLEANING & PAINT. EXTEND NEW WORK TO INCLUDE CONNECTIONS TO EXISTING FRAMING AS SHOWN.



SLAB PLAN - 79'-4 1/2" TO EL. 85'-0"  
 SPRING ST.

A1	-
3/32" = 1'-0"	

REV.	DESCRIPTION	DATE
0	ISSUED FOR PERMITTING	7-18-07

**ISSUED FOR PERMITTING**  
**07-18-07**

CURRENT ISSUE STATUS:

**SM RT**  
 ARCHITECTURE ENGINEERING PLANNING

144 Fore Street / P.O. Box 618  
 Portland, Maine 04104  
 Tel. (207) 772-3946  
 Fax. (207) 772-1070

PROJECT: **FOURTH LEVEL PARKING DECK PLAN**  
 LOCATION: **110 FREE STREET**

SHEET TITLE: **PARKING DECK PLAN**

SCALE: 3/32" = 1'-0" DATE: 5-11-07

PROJECT MANAGER: JH GRAPHIC SCALE: 0' 1'

JOB CHG./DRAWN: AP SHEET NO. **SF104**

DATE OF RECORD: MC

SMART CAD FILE: SF104-07087

PROJNO: 07087