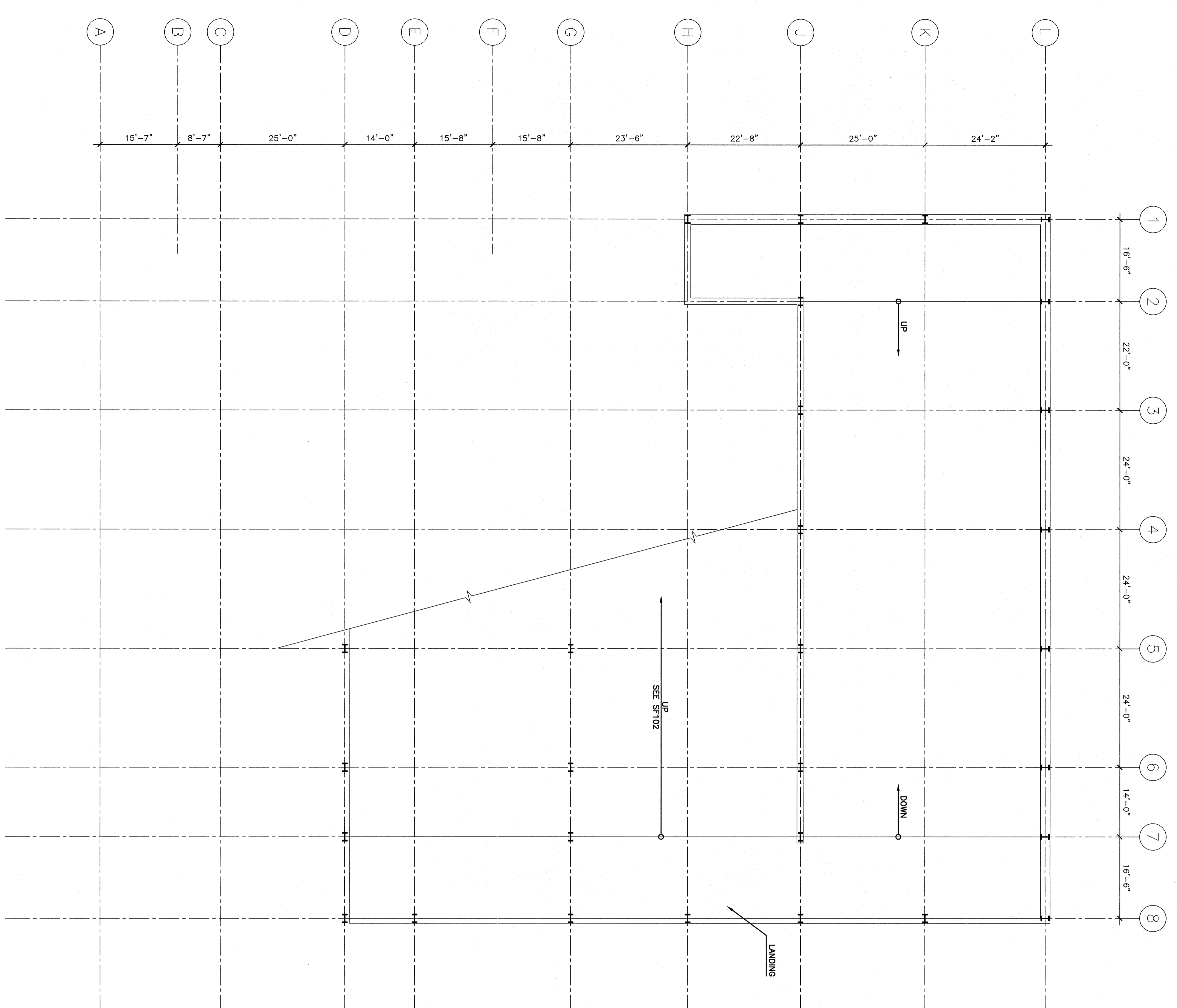


NOTES:

- NEW GUARDRAIL TYPES
 GR1 - WIDE FLANGE W/222 GUARDRAIL FASTENED TO EXISTING W6 POSTS. WHERE CANTILEVERED ENDS EXTEND MORE THAN 1'-0" BEYOND LAST POST, CONNECT TO EXISTING W6 POSTS.
 GR2 - WIDE FLANGE W/222 GUARDRAIL FASTENED TO W6/16 POSTS. THIS SECTION IS TYPICAL AT THE PERIMETER UNLESS OTHERWISE NOTED.
 GR3 - SAME AS GUARDRAIL GR1 EXCEPT USE W/240 BEAM. THIS SECTION IS INTENDED TO APPLY ONLY WHERE EXISTING DIAGONAL BRACING INTERFERES W/ W6 POSTS.
 GR4 - 6" X 6" BEAM GUARDRAIL (100#) PER ASSURD SPECIFICATION. W/222 GUARDRAIL FASTENED TO W6/16 POSTS. POSTS MAY BE DRIVEN INTO EXISTING PAVEMENT/SOIL OR SET IN PLACE BY EXCAVATION & BACKFILL. SEE ELEVATION J5/SF901 FOR DETAILS.
 GR5 - WIDE FLANGE W/222 GUARDRAIL, FASTENED TO W6/16 POSTS ANCHORED TO EXISTING SLAB. SEE SECTION E1/SF501. THIS GUARDRAIL INCLUDES PEDESTRIAN PROTECTION IN ADDITION TO VEHICLE PROTECTION.
 GR6 - WIRE ROPE GUARDRAIL @ RAMP. PROVIDE 4 @ 3/4" & 6 @ 1/4" WIRE ROPE SHALL BE 6x19WRC EXTRA IMPROVED FLOW STEEL. WIRE ROPE & FITTINGS SHALL BE 304 STAINLESS STEEL. WIRE ROPE SHALL BE DRILLED HOLES AS SPECIFIED FOR COLUMN REMAINING @ LOWER LEVELS OF COL. G5 & G6. SEE SECTION J14/SF501 & TYPICAL TERMINATION DETAIL E14/SF501.
 GR8 - SAME AS GR5 EXCEPT WIRE ROPE IS SECURED TO STEEL PLATES WELDED TO EXISTING COLUMNS. SEE SECTION N1/SF502 FOR TYPICAL DETAIL & SECTION J1/SF502 FOR DETAIL @ TERMINATION.
 2. DIMENSIONS & MEMBER SIZES ARE ESTIMATIONS BASED ON PREVIOUSLY PREPARED DOCUMENTS & FIELD MEASUREMENTS.



1st LEVEL SLAB PLAN

A1		-	
3/32" = 1'-0"			
PROJECT: PROJECT 1 110 FREE STREET LOCATION			
SHEET TITLE: FIRST LEVEL PARKING DECK PLAN			
SCALE: 3/32" = 1'-0"	DATE: 5-11-07		
PROJECT MANAGER: JHP	GRAPHIC SCALE: 0' 1'		
JOB CDS/RAWN: JHP	MAC		
A/E OF RECORD: SF101-0307	SHEET NO. SF101		
SMART CAD FILE: SF101-0307	DATE: 07/07		
PRODUCT NO. 07/07			

ISSUED FOR PERMITTING
07-18-07

REVISIONS:

REV.	DESCRIPTION	DATE
0	ISSUED FOR PERMITTING	7-18-07

PROJECT NORTH

ARCHITECTURE ENGINEERING PLANNING

SM RT

144 Fore Street / 2, Box 618
 Portland, Maine 04104
 Tel: (207) 772-3946
 Fax: (207) 772-0700

PROJECT 1
110 FREE STREET
LOCATION

