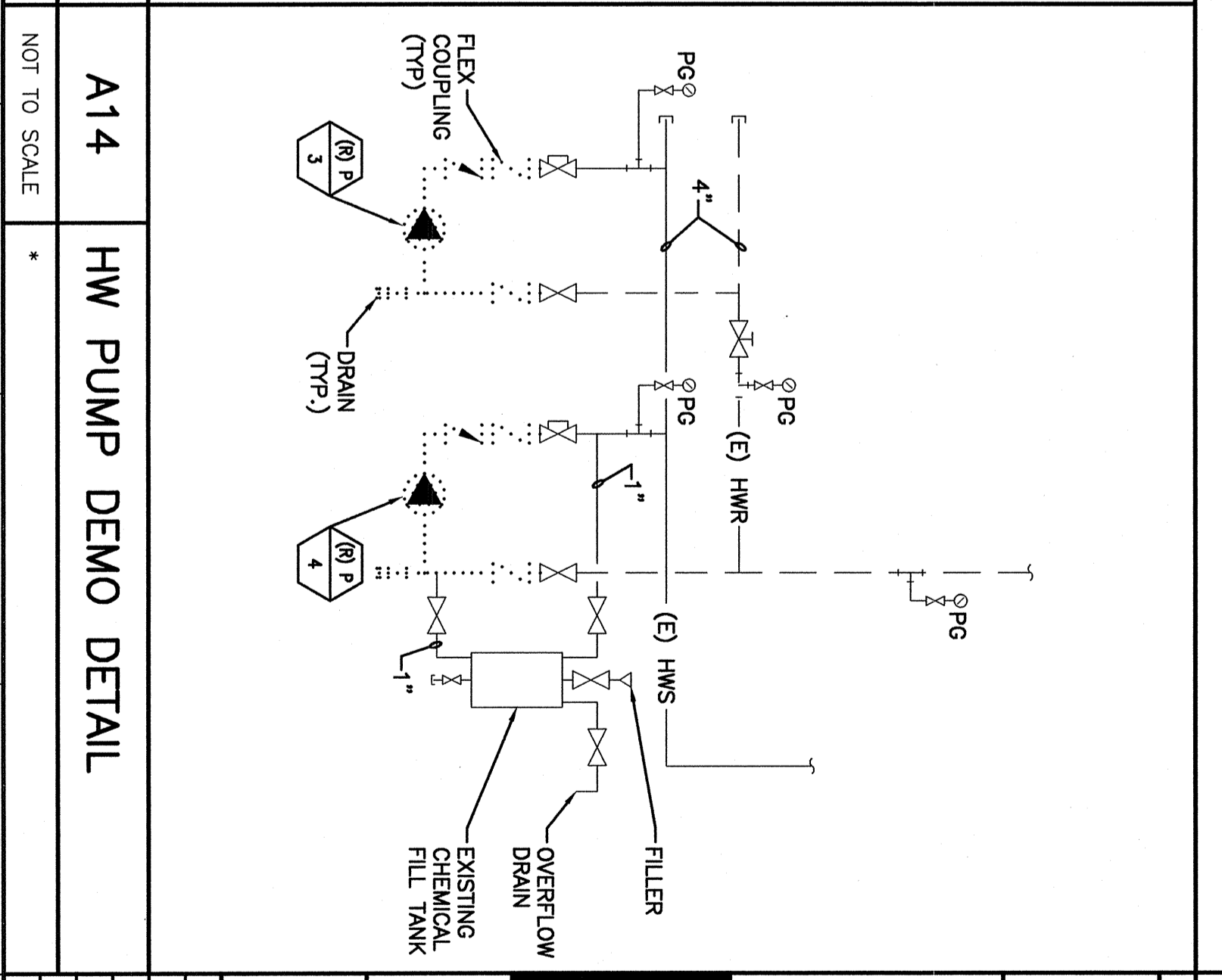
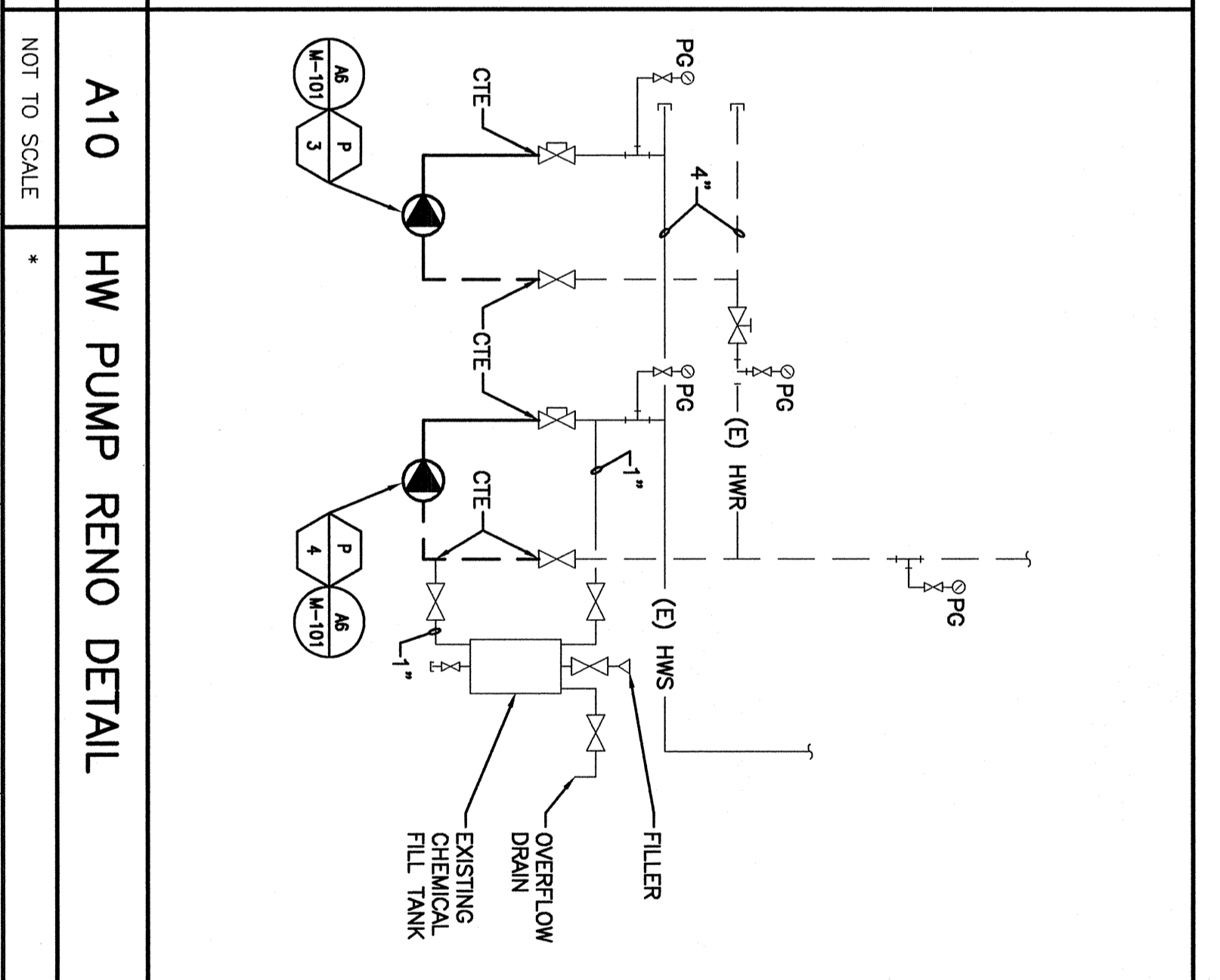
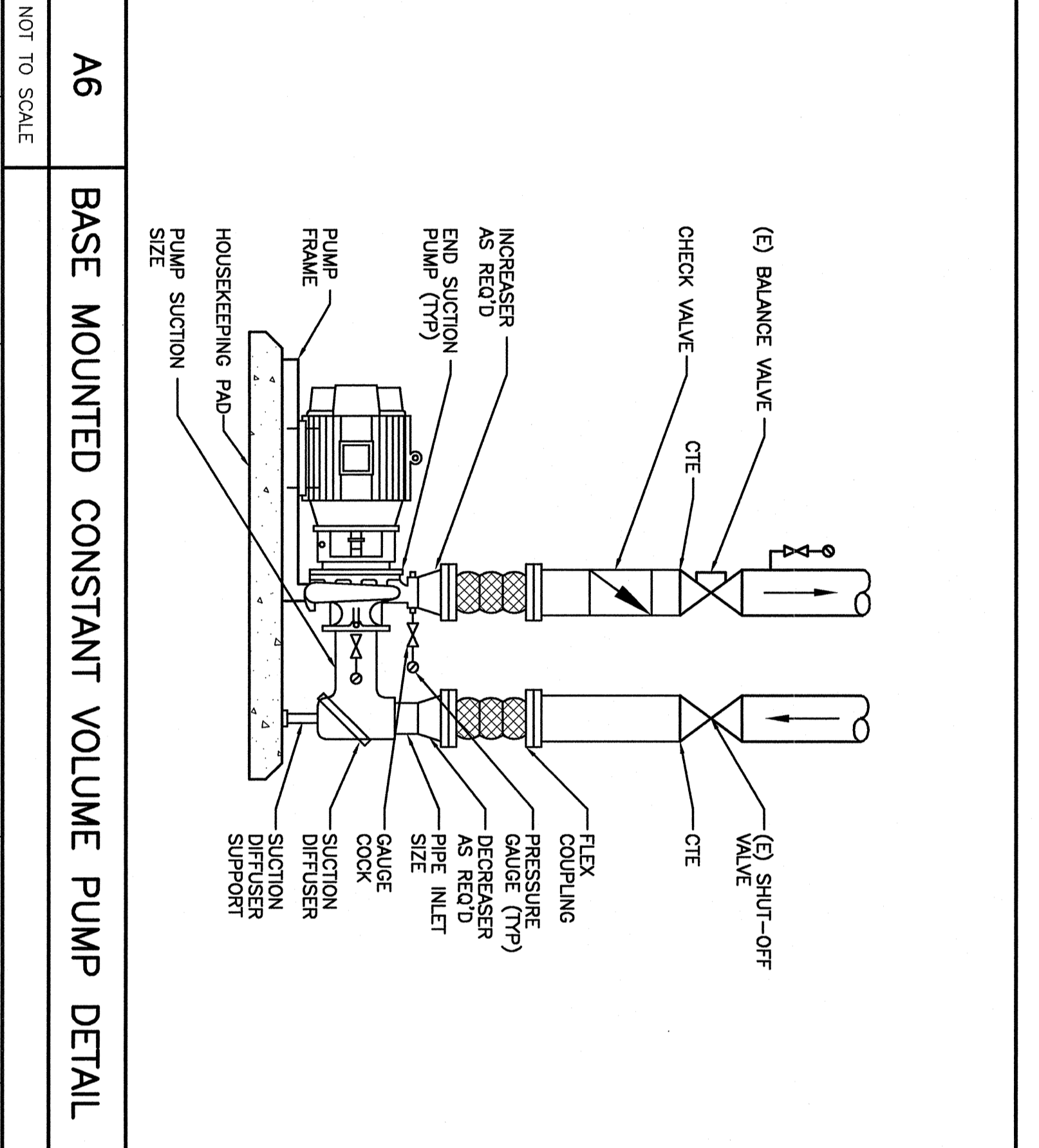
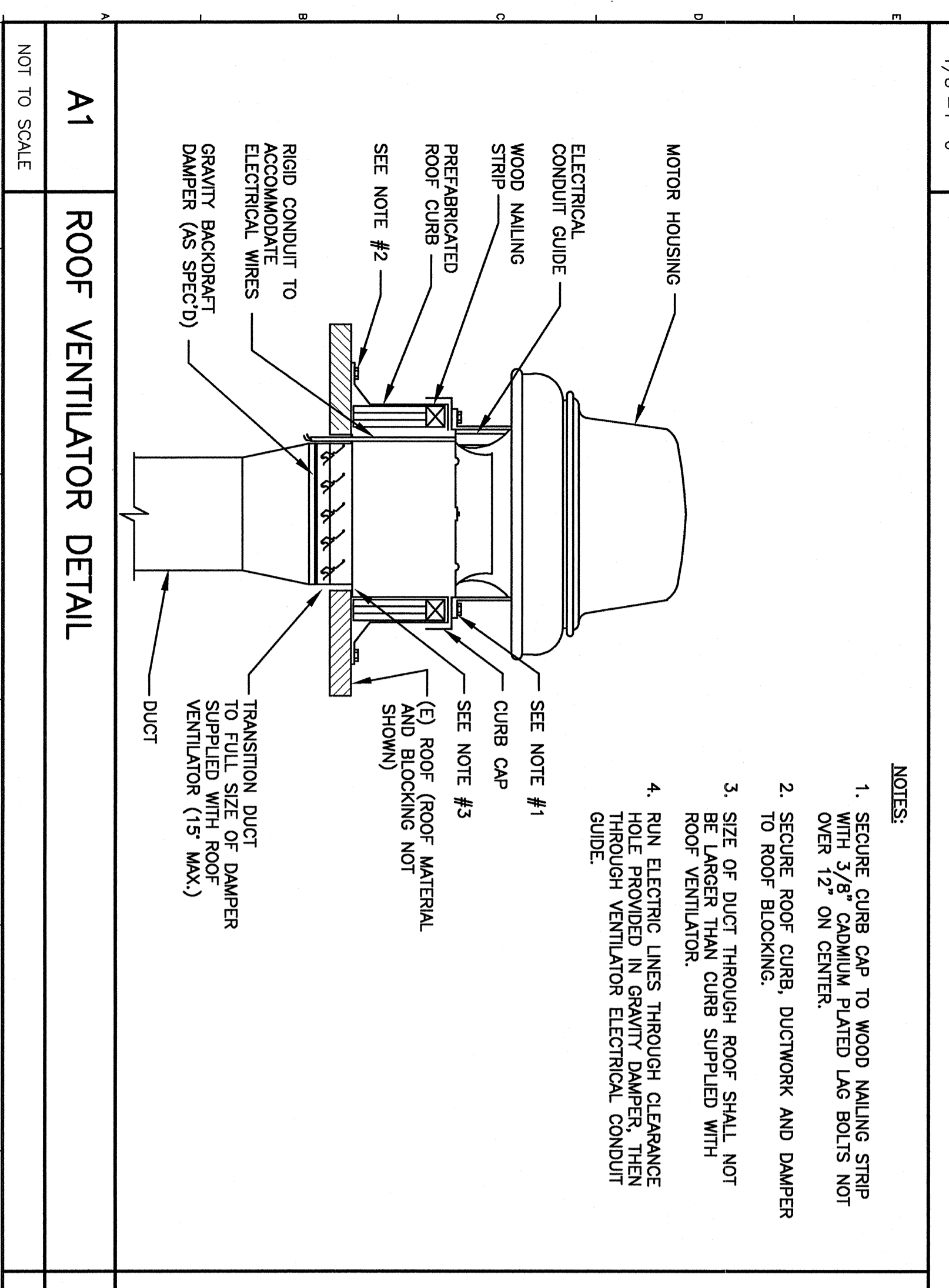


NOTE:
1. SEE SHEET M-001 FOR LEGEND AND ABBREVIATIONS.

KEYED NOTES:
 ① REMOVE EXISTING EXHAUST FAN AND ASSOCIATED COMPONENTS, COMPLETE CAP AND SEAL EXISTING OPENING.
 ② DISCONNECT AND REMOVE EXISTING EXHAUST FAN AND ASSOCIATED COMPONENTS, COMPLETE, MODIFY EXISTING OPENING TO ACCOMMODATE NEW EXHAUST FAN, INSTALL EXISTING DISCONNECT SWITCH AND EXTEND EXISTING BRANCH WIRING AS REQUIRED.
 ③ REMOVE EXISTING EXHAUST FAN AND ASSOCIATED COMPONENTS, COMPLETE, PATCH AND SEAL OPENING TO MATCH SURROUNDING CONDITIONS.
 ④ EXISTING EXHAUST FAN TO REMAIN.

E1 ROOF PLAN
1/8"=1'-0"



ISSUED FOR PERMITTING
07-18-07

SM RT
ARCHITECTURE ENGINEERING PLANNING

144 First Street, O. Box 618
Portland, Maine 04104
Tel: (207) 772-8846
Fax: (207) 772-8090

ANTHEM BLDG., ROOF PLAN AND DETAILS

PROJECT: EXTERIOR IMPROVEMENTS & MODEL TENANT FIT-UP
110 FREE STREET
PORTLAND, MAINE

SHEET TITLE: AS NOTED
DATE: GRAPHIC SCALE: 0"=1'
PROJECT MANAGER: JIH SDJ/BGS
JOB CAP/DRAWN: SDJ/BGS
A/E OF RECORD: JIH
SMART CAD FILE: M-101-07087
PROJECT No.: 07087

SHEET No. **M-101**