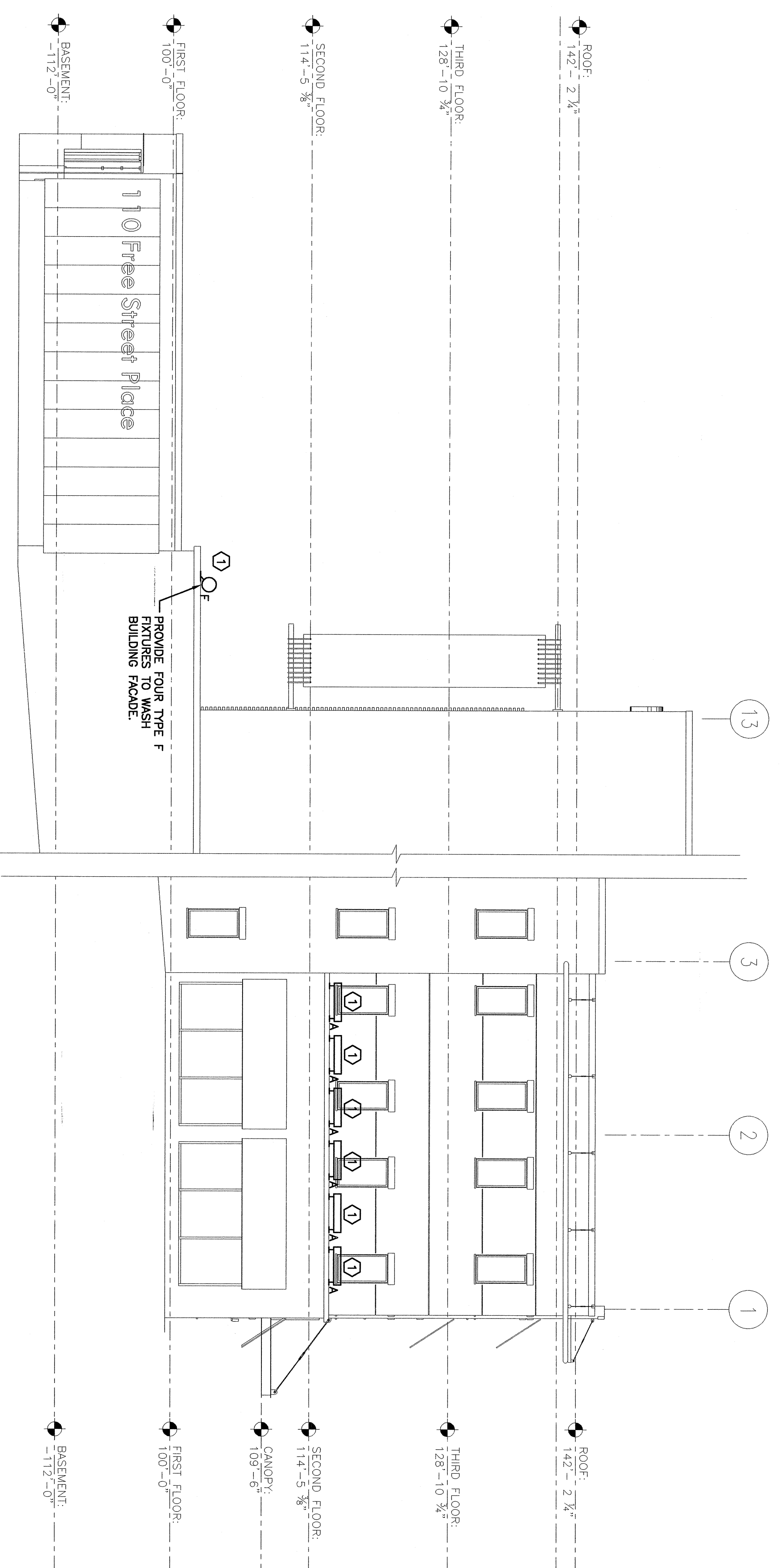


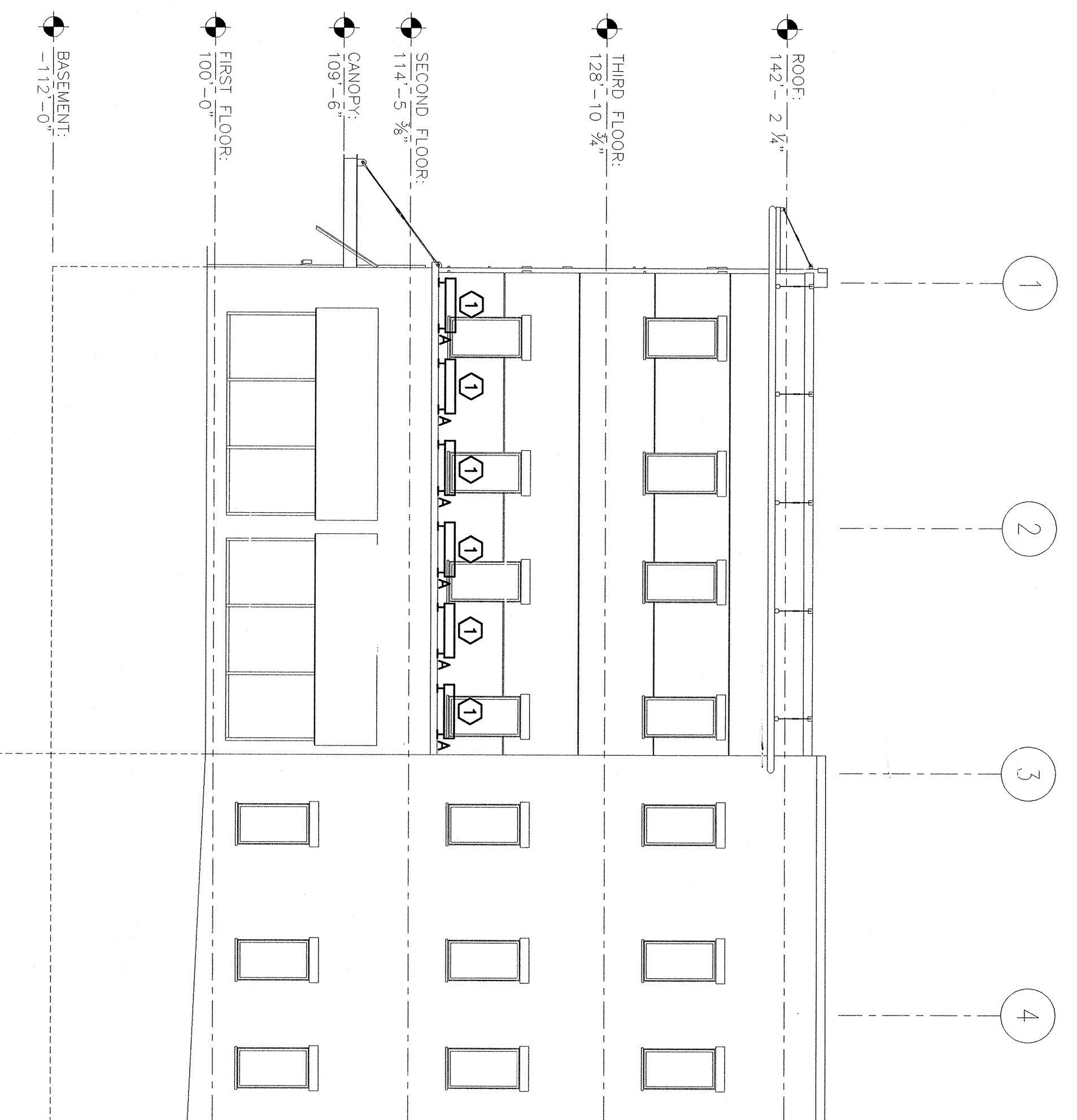
NOTE:
1. SEE SHEET E-001 FOR LEGEND AND GENERAL NOTES.

KEYED NOTE:
① FIELD VERIFY 277V POWER SOURCE FOR NEW EXTERIOR LIGHTS. ALL EXTERIOR LIGHTS TO BE CONTROLLED BY A PHOTOCELL.



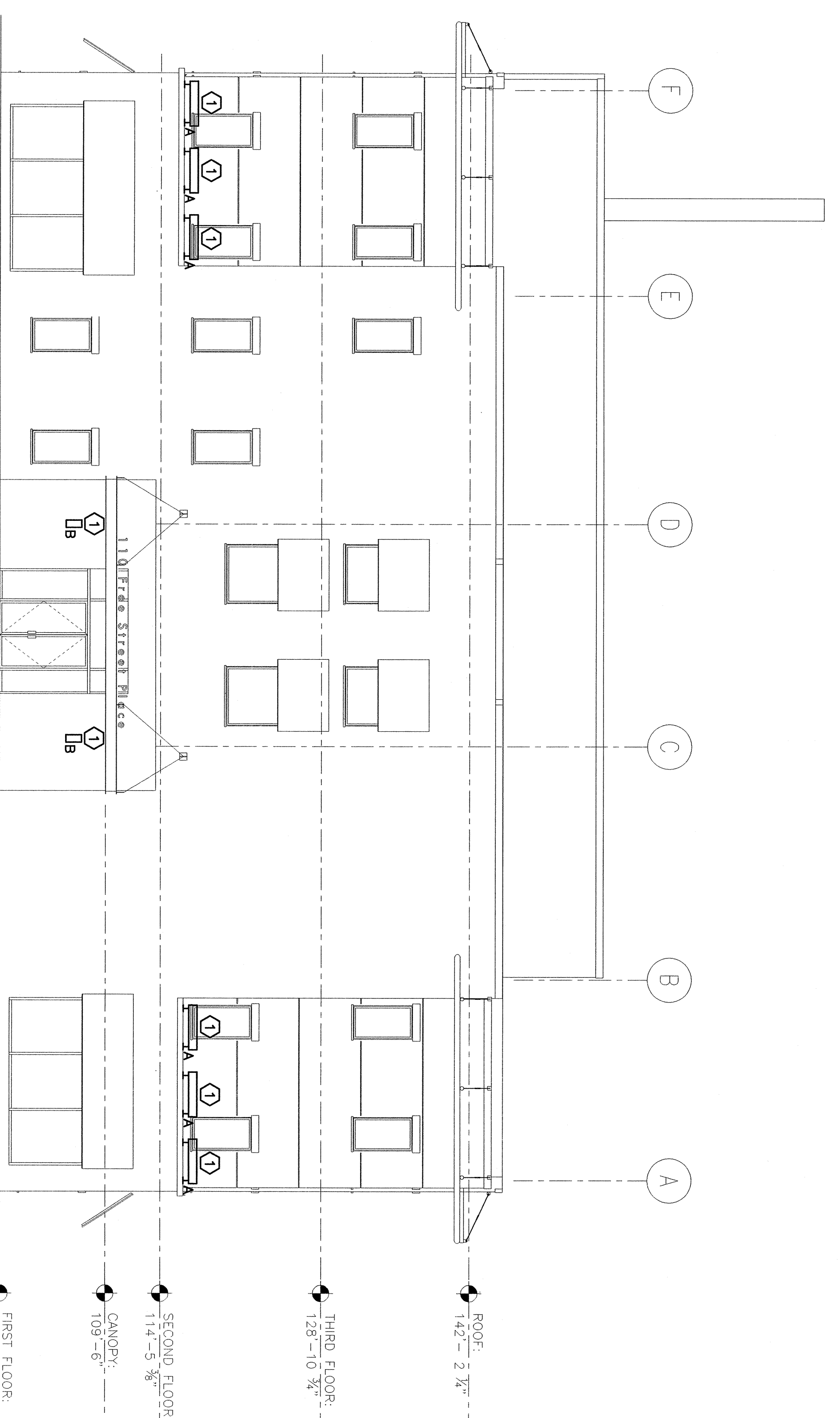
J1 EAST ELEVATION

1/8"=1'-0"



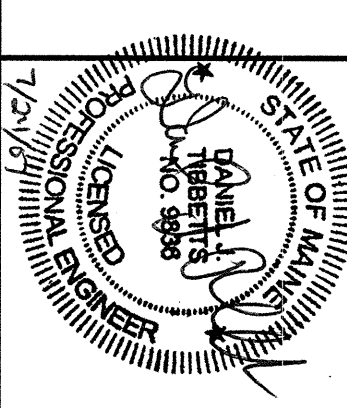
A1 WEST ELEVATION

1/8"=1'-0"



A8 NORTH ELEVATION

1/8"=1'-0"

REV.	DESCRIPTION	DATE
ISSUED FOR PERMITTING 07-18-07		
CURRENT ISSUE STATUS:		
		
SM RPT ARCHITECTURE ENGINEERING PLANNING SMART 144 Free Street, P.O. Box 618 Portland, Maine 04104 Tel. (207) 772-3846 Fax. (207) 772-0700		
PROJECT: EXTERIOR IMPROVEMENTS & MODEL TENANT FIT-UP 110 FREE STREET PORTLAND, MAINE		
SHEET TITLE: BUILDING EXTERIOR LIGHTING		
SHEET No. ES101		
PROJECT No. 07087		
JOB CAP/DRWNR: JIH / CDS		
DATE: AS NOTED		
SCALE: GRAPHIC SCALE: 1" = 8'-0"		
A/E OF RECORD: DJT		
SMART CAD TITLE: ES101-07087		
PROJECT No. 07087		