

**NOTE:**

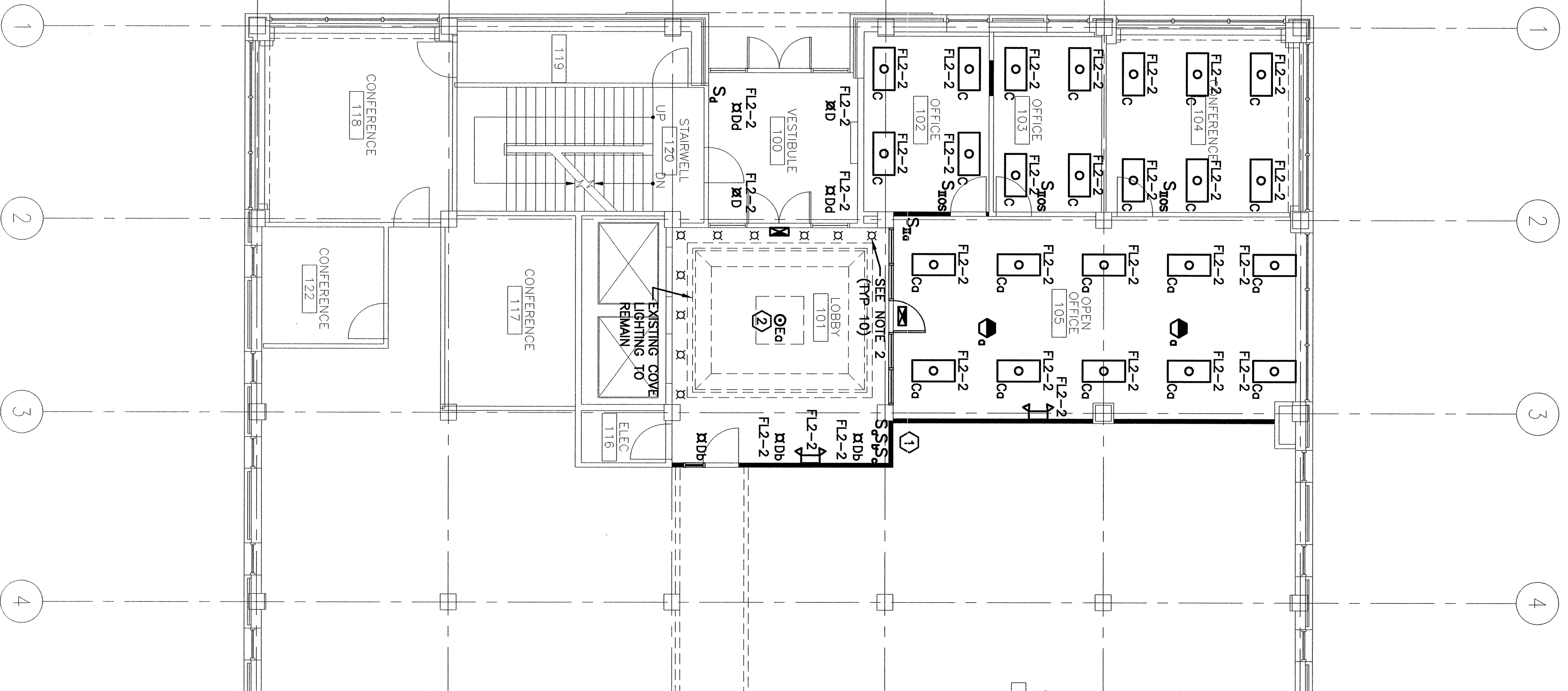
1. SEE SHEET E-001 FOR LEGEND AND GENERAL NOTES.
2. EXISTING DOWNLIGHTS TO REMAIN. RELOCATE CONTROL SWITCH S<sub>2</sub> TO CONTROL NEW LOBBY DOWNLIGHTS AS AND NEW SWITCH FOR DOWNLIGHTS.

**KEYED NOTES:**

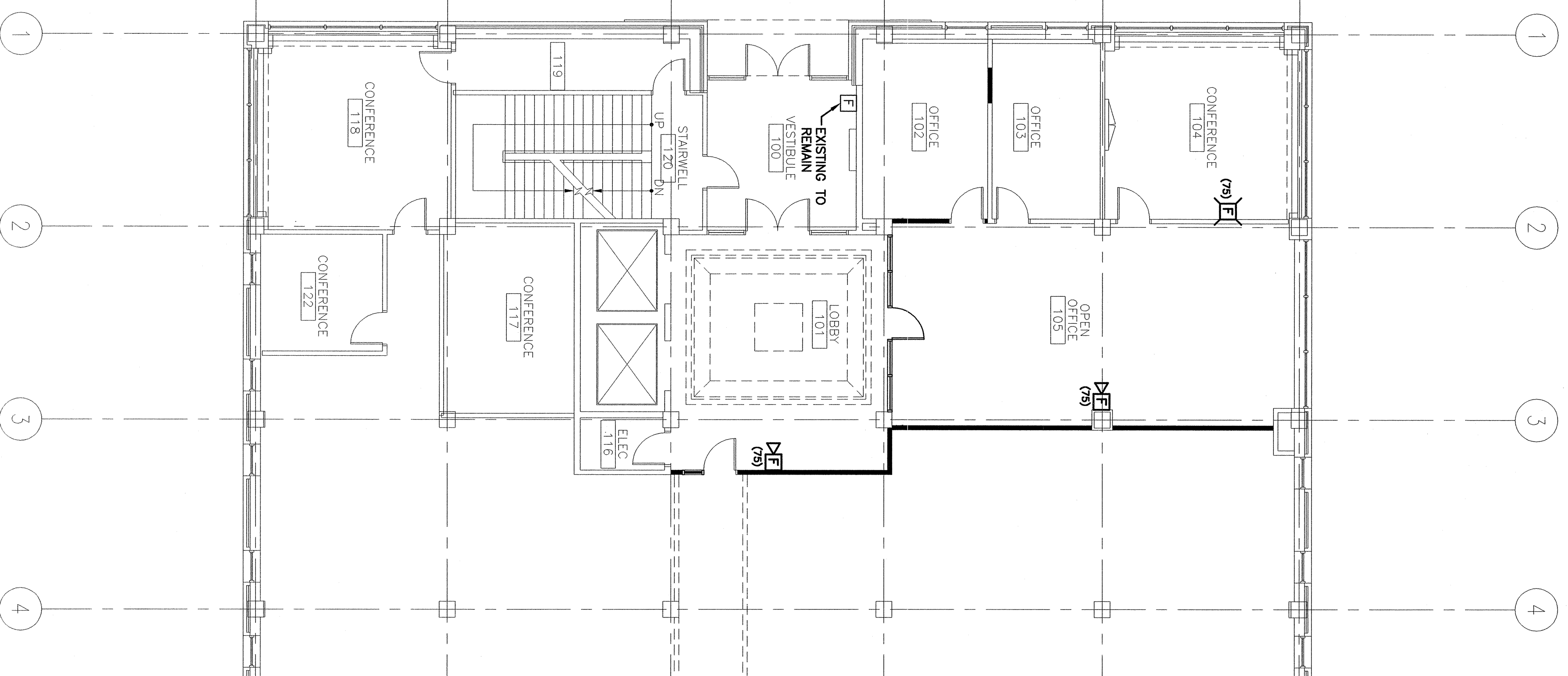
- ① SWITCHES S<sub>2</sub> AND S<sub>3</sub> ARE RELOCATED SWITCHES AND THIRD SWITCH S<sub>2</sub> TO CONTROL NEW LOBBY DOWNLIGHTS AS INDICATED.
- ② INSTALL NEW CHANDELIER IN PLACE OF EXISTING CHANDELIER AND UTILIZE EXISTING WIRING TO THE EXTENT POSSIBLE.

TYPE	DESCRIPTION	MFR.	LAMPS	MOUNTING	NOTES
A	EXTERIOR UPLIGHT FACADE FIXTURE WITH 18" ARM MOUNTING BRACKETS	INSIGHT EKS SERIES	1-144W T8 HO	SURFACE WALL	EXTERIOR UPLIGHT FACADE FIXTURE
B	EXTERIOR DECORATIVE WALL SOUNCE	TBD	TBD	WALL	
C	2'X4', PARABOLIC TROFFER WITH 18 CELL, 3' DEEP SEM-SPECULAR	COLUMBIA P421 SERIES	3-52078 3500K	CEILING RECESSED	PROVIDE WITH DUAL BALLASTS SWITCHING
D	8' SQUARE FLUORESCENT DOWNLIGHT WITH SQUARE CLEAR ALZAK REFLECTOR AND ELECTRONIC BALLAST.	PRESCOTT CFB SERIES	TRIPLE TUBE 3500K	RECESSED	
E	DECORATIVE PENDANT FIXTURE	TBD	TBD	CEILING PENDANT	
F	EXTERIOR WALL WASH FACADE FIXTURE	INSIGHT MASQUE III SERIES	1-150W MH	SURFACE	
	EMERGENCY EXT SIGN	CORNERSTONE PEX SERIES	LED	WALL OR CEILING	
	EMERGENCY LIGHTING UNIT	CORNERSTONE BMAX SERIES	INTEGRAL W/ UNIT	SURFACE WALL	

**LIGHT FIXTURE SCHEDULE**



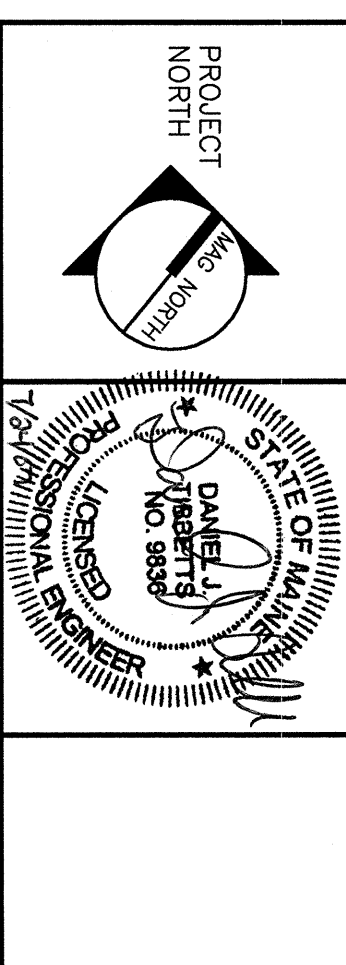
**A1 PARTIAL FIRST FLOOR LIGHTING PLAN**



**A6 PARTIAL FIRST FLOOR SYSTEMS PLAN**

**ISSUED FOR PERMITTING**

07-18-07



**SM RPT**  
ARCHITECTURE ENGINEERING PLANNING  
144 Fore Street P.O. Box 618  
Portland, Maine 04104  
Tel. (207) 772-3946  
Fax. (207) 772-0700

PROJECT:  
**EXTERIOR IMPROVEMENTS & MODEL TENANT FIT-UP**  
110 FREE STREET  
PORTLAND, MAINE

SHEET TITLE:  
**FIRST FLOOR PARTIAL LIGHTING AND SYSTEMS PLANS**

SCALE:	1/8"=1'-0"	DATE:	
PROJECT MANAGER:	JLH	GRAPHIC SCALE:	1"
JOB CAP/DRAWN:	CDS		
A/E OF RECORD:	DJT	SHEET No.	E-102
SMART CAD FILE:	E-102-07087		
PROJECT No.	07087		