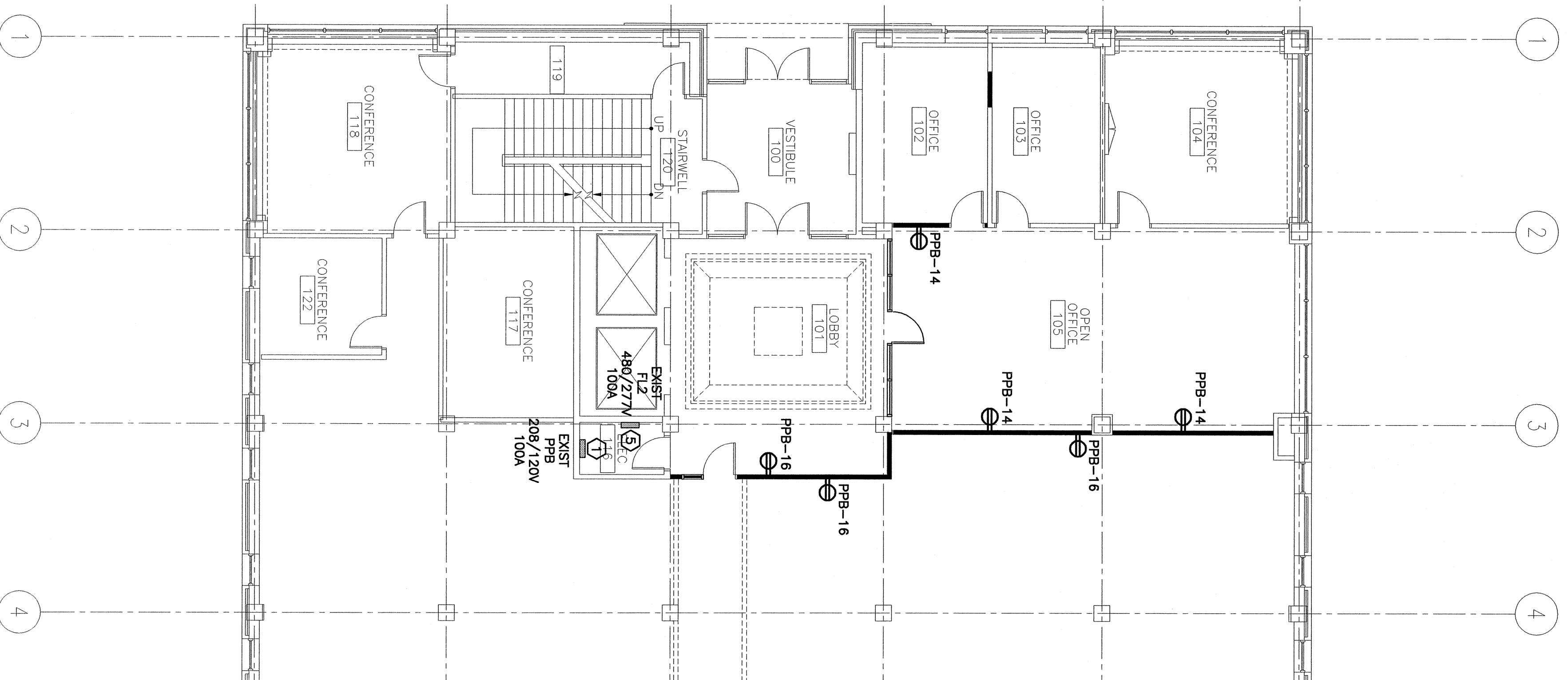
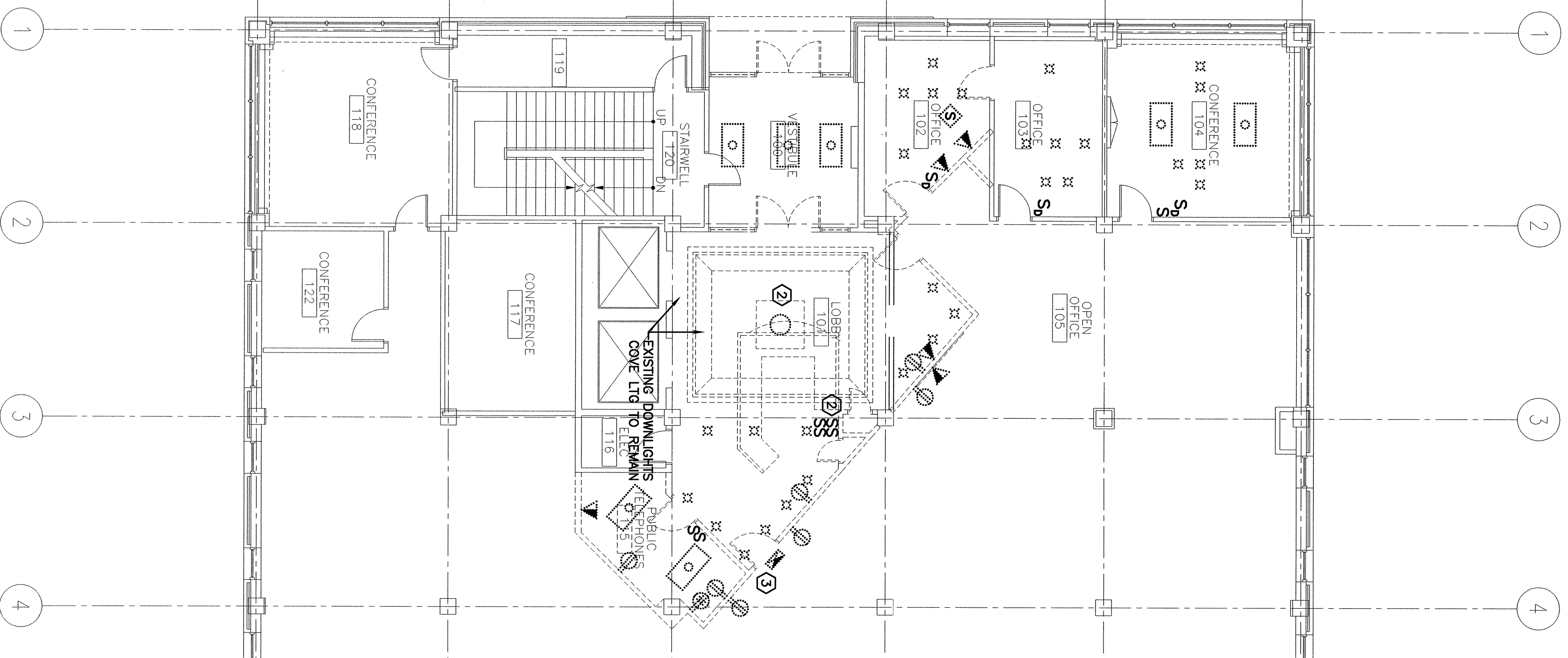


**NOTE:**  
1. SEE SHEET E-001 FOR LEGEND AND GENERAL NOTES.

**KEYED NOTES:**

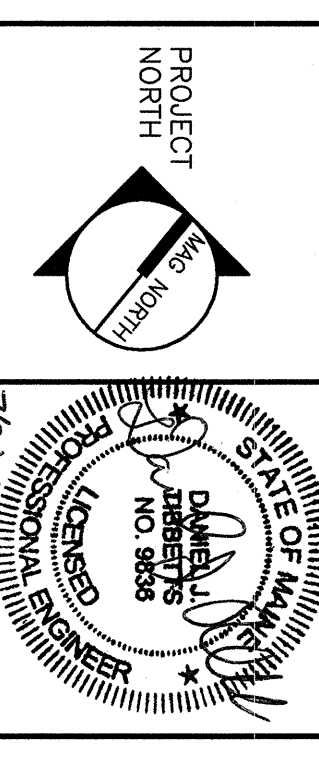
- 1 RELOCATE TWO LIGHT SWITCHES THAT CONTROL EXISTING CHANDELER AND LOBBY DOWNLIGHTS THAT ARE TO REMAIN. EXTEND EXISTING WIRING AS NECESSARY.
- 2 REMOVE EXISTING CHANDELER AND INSTALL NEW FIXTURE AS INDICATED ON LIGHTING PLAN. UTILIZE EXISTING WIRING TO THE EXTENT POSSIBLE.
- 3 RELOCATE EXISTING EXIT SIGN TO NEW LOCATION SHOWN ON LIGHTING PLAN. MODIFY EXISTING WIRING AS REQUIRED TO ACCOMMODATE NEW SIGN LOCATION.
- 4 FURNISH AND INSTALL TWO NEW 20A, 1P CIRCUIT BREAKERS IN EXISTING PANELBOARD PPB TO FEED NEW RECEPTACLES SHOWN.
- 5 UTILIZE EXISTING SPACE 20A, 1P CIRCUIT BREAKER IN EXISTING PANELBOARD P12 TO FEED NEW LIGHTS SHOWN ON LIGHTING PLAN.



REV.	DESCRIPTION	DATE

**ISSUED FOR PERMITTING**  
07-18-07

CURRENT ISSUE STATUS:



**SMRT**  
ARCHITECTURE ENGINEERING PLANNING  
144 Fore Street P. O. Box 618  
Portland, Maine 04104  
Tel. (207) 772-3846  
Fax. (207) 772-0700

PROJECT:  
**EXTERIOR IMPROVEMENTS & MODEL TENANT FIT-UP**  
110 FREE STREET  
PORTLAND, MAINE

SHEET TITLE:  
**FIRST FLOOR PARTIAL DEMO AND POWER PLANS**

SCALE:	1/8"=1'-0"	DATE:	
PROJECT MANAGER:	JLH	GRAPHIC SCALE:	0' 1'
JOB CHG/DRWNG:	CDS	SHEET NO.:	E-101
A/E OF RECORD:	DJT	PROJECT NO.:	07087
SMART CAD FILE:	E-101-07087		