

**Material Specifications:**

- All materials and equipment shall be handled, stored, installed in accordance with manufacturer's written instructions.
- Provide uniform work face at all sections. Provide masonry and templates as may be required for proper installation of work. Install all materials and systems in proper relation with adjacent construction. Install work plans and level.
- Protect all stored materials and work from damage.

**Section 07111 - Scheduling Drawings:**

- Refer to drawings for materials and fixtures to be removed.

**Section 09013 - Cleaning and Repair of Pre-Cast Concrete and Cast in Place Concrete:**

- Pre-cast concrete and cast in place concrete shall be cleaned to a uniform finish. Refer to the concrete repair manual for repair methods.
- Pre-cast concrete at locations of exposed rebar and major cracks. Utilize epoxy bonding agents, polymer-modified cementitious patching mortar and epoxy crack injection adhesive as manufactured by Bunkel Chemical Co., St. Louis, Missouri.

**Section 09090 - Masonry:**

- All masonry concrete and masonry is attached to the facade on 110 Pine Street, remove brick as required for attachment and touch in new brick to match.
- Reference attached Specifications for repair of masonry at stair in Parking Garage.

**Division 05 - Metals:**

- Refer to structural drawings for information regarding materials for concrete, masonry and masonry supports.
- Refer to structural drawings for information regarding guard rails at Parking Garage.

**Section 05231 - Miscellaneous Metals:**

- Provide new pipe hangers at stairs in Parking Garage. Reference architectural drawings for details.

**Section 06040 - Interior Architectural Woodwork:**

- Provide new plastic laminate panels at 2 passenger elevators.
- Re-work existing lobby paneling as necessary.

**Section 07241 - Insulated Concrete Wall Panels:**

- Provide Cornea Versawall, 2" depth, 3/8" wide, color to be selected.

**Section 07090 - Fastenings:**

- Provide fasteners, acrylic emulsion type, ASTM C 834, at interior joints in vertical surfaces with limited movement.
- Provide multi-component non-eg urethane sealant at exterior applications. Color(s) to be selected.

**Section 08110 - Steel Frames and Doors:**

- Products shall comply with ANSI/SRIA 100.
- Provide 18 gauge, slip-on type frames of thickness required by wall assembly, primed and ready for field painting for interior applications.
- Provide 14 gauge, metal-to-concrete, welded frames of thickness required by wall assembly, primed and ready for field painting for exterior applications.
- Provide metal-to-concrete doors with narrow vision lights, primed and ready for field painting.

**Section 08110 - Flush Wood Doors:**

- Products and installation shall comply with NWYDA, U.S. Inc., "Architectural Wood Flush Doors."
- Provide 1-3/4 inch thick custom grade, 7-ply doors with partitioned core and finish veneer to match panels in entrance lobby.

**Section 08330 - Overhead Ceiling Grids:**

- Provide overhead ceiling grids by Calspan (Door Services) as follows:  
Grids No. 1: 16.2" x 8.6" high, with feathered lead, motor with cover, 100,000 cycle springs. Motor to be TEFC II and GH operation, non-assemble cycle counter, safety eye.  
Grids No. 2: Same as above, except 18.2" wide.  
Grids No. 3: Same as above, except 24.0" wide.  
All grids to have one (1) year warranty on all door components.
- Provide start-up and training for owner's representatives.
- Size of grids to be field verified.

**Section 08411 - Aluminum Framed Entrances and Storefronts:**

- Provide aluminum storefront as described on drawings. Storefront and doors to be equal to Kawneer 4517 at exterior set and 451 at interior locations. Finish to be Dark Bronze anodized. Clearing to be 1" clear, tempered and insulated at exterior and 1/2" tempered, clear at interior applications.
- Hardware to include hinges, exit devices on exterior doors, Pull-Offs on interior doors, Catches and Threshold and Weatherstripping at exterior doors. Provide manufacturer's standard hardware.

**Section 08710 - Door Hardware:**

- Provide hardware in accordance with ANSI A156 series standards:  
a. HWS-1: (All Interior Offices)  
i. Hinges: Mortise, anti-friction bearing type, 3 per leaf.  
ii. Cylindrical Lockset: Mortise locking in pulling direction, diameter 1/2" fabricated for drilled-in application to frame.  
iii. HWS-2: (All Garage Exit Doors)  
i. Hinges: Doorset, anti-friction bearing type, 3 per leaf.  
ii. Door Pull: 1-1/2" diameter, 4.53" long, 1/2" diameter, 1/2" diameter for drilled-in application to frame.  
iii. Door Stop: 1/2" diameter, 1/2" diameter, 1/2" diameter, 1/2" diameter for drilled-in application to frame.  
iv. Door Stop: Wall mounted, BHMA A156.16.  
v. Door Stop: Equal to I.C.N. 4030 Series.  
vi. Door Stop: Equal to I.C.N. 4030 Series.  
vii. Hinges: By Gate Manufacturer.  
viii. HWS-3: (All Garage Exit Doors)  
i. Hinges: By Gate Manufacturer.  
ii. Door Pull: To I.C.N. 4030 Series.  
iii. Door Stop: Equal to I.C.N. 4030 Series.  
iv. Door Stop: Equal to I.C.N. 4030 Series.  
v. Door Stop: Equal to I.C.N. 4030 Series.
- Provide hardware and installation in compliance with requirements of ADA Accessibility Guidelines.
- Finish to be US28B - Brushed Stainless.

**Section 08840 - Plastic Glazing:**

- At entrance canopy, provide 25 mm, clear Polyglaz as distributed by Manufacturer, NH (603) 669-2772.

**Section 09260 - Gypsum Board Assemblies:**

- Provide 5/8" gypsum wallboard, ASTM C36. Paper tape, metal or plastic corner bead and edge trim, and setting type joint compound, ASTM C 475. Where noted, gypsum wallboard to be moisture resistant.
- Provide steel studs, runners and framing channels complying with ASTM C 645 with manufacturer's standard corrosion-resistant zinc coating. Provide material thickness to meet deflection criteria of stud length divided by 240.
- Provide fasteners conforming with wallboard and framing manufacturer's written recommendations for application. Provide installation in accordance with ASTM C 754.
- Provide ASTM C 940, Level 4 finish to all wallboard surfaces exposed to view.

**Section 09311 - Ceramic Tile:**

- Existing floor materials (tile or carpet) to be removed and floors prepared for new finish.
- Provide tiles set 1/2" x 1/2" protrusion tile equal to Interlocks, Iron Stone at Entrance Vestibule, Lobby and Passenger Elevators. (Distributed by NRP)
- Grout to be selected from manufacturers standard colors. Grout joints to be 1/8", non-sanded.

**Section 09311 - Acoustic Panel Ceilings:**

- Provide acoustic panels with round edge, framed system and white painted finish equal to Armstrong "Flour Blended"
- Provide direct hung, wide-face intermediate duty, double-web supported steel suspension system with painted finish. Provide accessories as recommended by manufacturer, and ASTM C 616.

**Section 09861 - Carpet:**

- Carpet to be 350 yard for carpet not including installation.
- Carpet to be direct-glue application, broadloom, minimum 26 oz., solution-dyed nylon.
- Provide 4" resilient core base at all rooms to receive carpet.

**Section 09910 - Painting:**

- Provide surface preparation and paint for interior and exterior surfaces. Provide compatible, first grade, professional line primer and finish products from either Benjamin Moore or Sherwin Williams. Provide samples of full range of manufacturer's color and finish options for owner selection.

**Section 09910 - Priming:**

- Provide paint as follows:  
a. Gypsum Drywall:  
i. coat latex primer, and two coats latex pear finish.  
b. Formers: Metal: Epoxy primer, and two coats latex semi-gloss enamel finish.  
c. Precast concrete panels at Garage: Paint exterior facade and top and side edges only.  
d. Concrete: Epoxy primer, and two coats latex semi-gloss enamel finish.  
e. Concrete: Epoxy primer, and two coats latex semi-gloss enamel finish.  
f. Concrete: Epoxy primer, and two coats latex semi-gloss enamel finish.  
g. Concrete: Epoxy primer, and two coats latex semi-gloss enamel finish.  
h. Concrete: Epoxy primer, and two coats latex semi-gloss enamel finish.  
i. Concrete: Epoxy primer, and two coats latex semi-gloss enamel finish.  
j. Concrete: Epoxy primer, and two coats latex semi-gloss enamel finish.  
k. Concrete: Epoxy primer, and two coats latex semi-gloss enamel finish.  
l. Concrete: Epoxy primer, and two coats latex semi-gloss enamel finish.  
m. Concrete: Epoxy primer, and two coats latex semi-gloss enamel finish.  
n. Concrete: Epoxy primer, and two coats latex semi-gloss enamel finish.  
o. Concrete: Epoxy primer, and two coats latex semi-gloss enamel finish.  
p. Concrete: Epoxy primer, and two coats latex semi-gloss enamel finish.  
q. Concrete: Epoxy primer, and two coats latex semi-gloss enamel finish.  
r. Concrete: Epoxy primer, and two coats latex semi-gloss enamel finish.  
s. Concrete: Epoxy primer, and two coats latex semi-gloss enamel finish.  
t. Concrete: Epoxy primer, and two coats latex semi-gloss enamel finish.  
u. Concrete: Epoxy primer, and two coats latex semi-gloss enamel finish.  
v. Concrete: Epoxy primer, and two coats latex semi-gloss enamel finish.  
w. Concrete: Epoxy primer, and two coats latex semi-gloss enamel finish.  
x. Concrete: Epoxy primer, and two coats latex semi-gloss enamel finish.  
y. Concrete: Epoxy primer, and two coats latex semi-gloss enamel finish.  
z. Concrete: Epoxy primer, and two coats latex semi-gloss enamel finish.

**Section 323113 - Chain Link Fencing and Gates:**

- Provide chain link fencing and gates at Garage where shown on elevations.
- Provide new swinging gate at Loading Dock.

**Section 10731 - Awnings and Banners:**

- Provide awning and banner as detailed on drawings. Fabric to be acrylic-coated canvas with UV protection. Banners to be (7) different colors and graphics will be one of the 7 colors. Provide shop drawings indicating framing and attachment and finish hardware and attachments.

**Section 323113 - Chain Link Fencing and Gates:**

- Provide chain link fencing and gates at Garage where shown on elevations.
- Provide new swinging gate at Loading Dock.

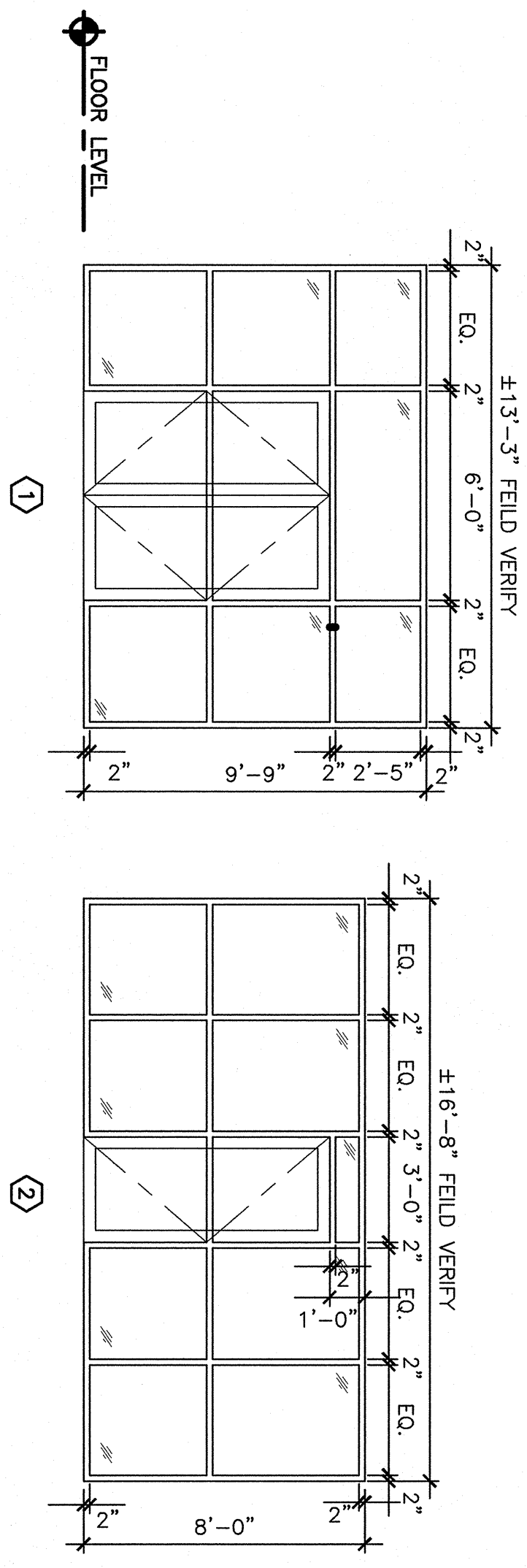
**ROOM FINISH SCHEDULE**

ROOM NUMBER	ROOM NAME	FLOOR	BASE	WALLS				CEILING			ROOM NUMBER	REMARKS
				NORTH	EAST	WEST	MATERIAL	HEIGHT	REPAIR PLASTER AND REPAIR EXISTING SOFFIT AND GNB DOWE TO REMAIN			
100	VESTIBULE	PFT	WD	PFT	STORFRONT	EXIST. WD	EXIST./NEW GNB	8'-5"	101	REPAIR PLASTER AND REPAIR EXISTING SOFFIT AND GNB DOWE TO REMAIN		
101	LOBBY	PFT	WD	EXIST. WD	GNB/PFT	GNB/PFT	ACT	8'-5"	102			
102	OFFICE	PFT	RB	GNB/PFT	GNB/PFT	GNB/PFT	ACT	8'-5"	103			
103	OFFICE	PFT	RB	GNB/PFT	GNB/PFT	GNB/PFT	ACT	8'-5"	104			
104	CONFERENCE	PFT	RB	GNB/PFT	GNB/PFT	GNB/PFT	ACT	8'-5"	105			
105	OPEN OFFICE	PFT	RB	GNB/PFT	GNB/PFT	GNB/PFT	ACT	8'-5"	104			

**DOOR SCHEDULE**

DOOR NUMBER	SIZE	MATERIAL	ELEVATION	GLAZING	MATERIAL	ELEVATION	FRAME	JAMB	SILL	HMS	FIRE RATING (MIN)	DOOR NUMBER	REMARKS
100a	2'3"-0" x 7'-0"	ALUM	FG		ALUM	1	*	*	*	*		100a	AUTO DOOR OPERATOR
100b	2'3"-0" x 7'-0"	ALUM	FG	TEMP	ALUM	2	*	*	*	*		100b	AUTO DOOR OPERATOR
101a	3'-0" x 7'-0"	ALUM	FG	TEMP	ALUM	*	*	*	*	*		101a	
101b	3'-0" x 7'-0"	WD	FG	TEMP	HM	*	*	*	*	*		101b	
102	3'-0" x 7'-0"	WD	F	*	HM	*	*	*	*	*		102	
103	3'-0" x 7'-0"	WD	F	*	HM	*	*	*	*	*		103	
104	EXISTING						*	*	*	*		104	

**M9 SCHEDULES**



**H9 ALUMINUM FRAME ELEVATIONS**

1/4" = 1'-0"

**FINISH ABBREVIATIONS:**

- ACT ACoustical CEILING TILE
- B.O.S. BOTTOM OF STRUCTURE
- CBM CABINET BOARD
- CONC CONCRETE
- CPT CARPET TILE
- CS CARPET TILE SURFACE
- EP EXISTING TO REMAIN
- EQ EXISTING STRUCTURE
- EQ EXISTING WALLBOARD
- GMB GLAZED WOOD
- GMT GLAZED WOOD
- INS INSULATED
- INS INSULATED PANELS
- LIN LINOLEUM
- LN LINOLEUM
- PC PRE-CAST PANELS
- PFT PRE-FINISHED BY MANUFACTURER
- POR PORCELAIN FLOOR TILE
- PL PLASTER
- PLM PLASTER
- PT PAINTED
- PT PAINTED
- QTB QUARTZ TILE
- RB ROBERT BROS
- RB ROBERT BROS
- RCP REFLECTED CEILING PLANK
- SC SEALED CONCRETE
- SP SPALL RESISTANT FLOORING
- SV SPLIT VINYL
- SV SPLIT VINYL
- SV VANT COMPOSITION TILE
- WCT WOOD
- WCT WOOD
- WCT WOOD

**NOTES:**

- SEE REFLECTED CEILING PLANS FOR CEILING AND SOFFIT HEIGHTS.
- SEE SPEC FOR ACT TYPES.

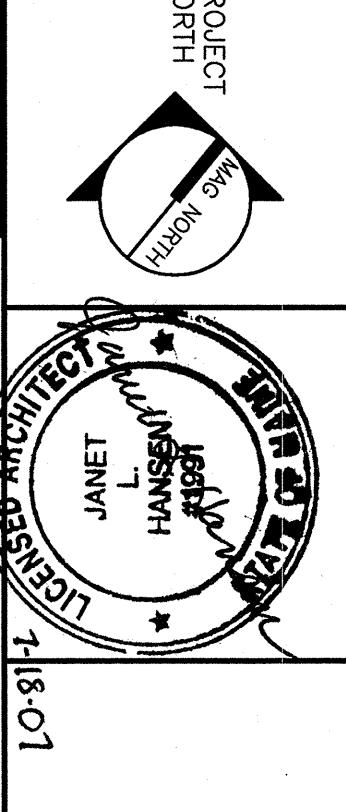
**GENERAL NOTES:**

- SEE SPECIFICATIONS FOR HARDWARE SETS AND ADDITIONAL INFORMATION REGARDING FINISH MATERIALS.

**KEYED NOTES:**

- ① DOOR HARDWARE SIMILAR TO JOHNSON 2009D SERIES ROOM DIVIDER HARDWARE, 4 DOOR SET.
- ② DOOR HARDWARE SIMILAR TO JOHNSON 2007D SET.

**ISSUED FOR PERMITTING**  
07-18-07



**SMRT ARCHITECTS, INC.**  
ARCHITECTURE ENGINEERING PLANNING  
144 Pine Street, 2nd Floor  
Portland, Maine 04104  
Tel: (207) 772-3486  
Fax: (207) 772-1000

**EXTERIOR IMPROVEMENTS & MODEL TENANT FIT-UP**  
110 FREE STREET  
PORTLAND, MAINE

**SCHEDULES AND FRAMING ELEVATIONS**

SHEET TITLE:	AS NOTED	DATE:	
PROJECT MANAGER:	JLH	GRAPHIC SCALE:	0" = 1"
JOB CHG/DRAWN:	SDJ/ADR		
A/E OF RECORDED:	JLH	SHEET NO.:	AE601
SMART CAD FILE:	AE601-07087	PROJECT NO.:	07087