

BIOSAFE

Environmental Services, Inc.

- Asbestos Removal
- Lead Paint Removal
- Bioremediation
- Controlled Demolition

ASBESTOS / LEAD DETERMINATION REPORT

**110 Free Street
Portland, Maine**



Prepared For:

**Mr. Dave Thomas
Consigli Construction Co; Inc.
84 Middle Street
Portland, Maine 04101**

Prepared By:

BIOSAFE Environmental Services, Inc.

October 5, 2009

TABLE OF CONTENTS

SECTION 1.0	EXECUTIVE SUMMARY
SECTION 2.0	ASBESTOS ANALYTICAL REPORTS
SECTION 3.0	LEAD ANALYTICAL REPORTS
SECTION 4.0	ASBESTOS LOCATION DRAWINGS

Section One

Executive Summary

Environmental Safety & Hygiene Associates, Inc. was retained by Consigli Construction Co., Inc. to conduct a comprehensive asbestos building materials and lead bearing paint assessment at 110 Free Street, Portland, Maine. The site assessment was completed on September 22, 2009 by Mark Griffith, Mark Coleman, and Peter Jabbusch, all State of Maine certified Asbestos Inspectors.

Asbestos Building Materials Survey

The objective of the assessment was to assess and document the presence of accessible Presumed Asbestos Containing Materials (PACM) and lead based paint within the boundaries of the facility that may be impacted by building renovation or demolition. In addition, the assessment was conducted in accordance with the requirements of the MDEP, USEPA National Emission Standard for Hazardous Air Pollutants, and the Occupational Safety and Health Administration.

During the survey, the inspection team identified suspect interior and exterior PACM's for subsequent sampling and analysis. The assessment by the survey team encompassed the majority of the facility as allowed by access. The asbestos building material survey was conducted in accordance with Maine DEP Chapter 425 Asbestos Management Regulations. The inspection includes collecting bulk samples of accessible suspect materials that are representative of each homogenous area. There were three types of PACM's sampled during this survey:

Surfacing materials; sprayed or applied by trowel and include fireproofing materials and various plasters. At least three bulk samples of surfacing materials were collected from each homogeneous area that was less than 1,000-square feet. Five bulk samples were collected for areas 1,000 to 5,000-square feet, and seven bulk samples were collected for areas greater than 5,000-square feet.

Thermal system insulation; including boiler cover, pipe cover, and duct insulation were assessed. The materials were either assumed to be asbestos containing or were sampled as follows; At least three bulk samples of thermal system insulation from each homogenous area or at least one bulk sample from each homogeneous patched area if the section is less than six linear or square feet.

Miscellaneous ACM; includes a variety of ceiling tiles, floor tiles, and gypsum board. Sample quantities for miscellaneous ACM follow the same requirements as for the two previously mentioned ACM types.

All bulk samples collected will be analyzed by a State-licensed and NVLAP Accredited Asbestos Analytical Laboratory using polarized light microscopy (PLM). Bulk samples will be analyzed until a positive result is obtained or all samples have been analyzed. Bulk samples of surfacing materials or thermal system insulation with an asbestos content of less than 10% as determined by PLM were reanalyzed by Point Count Method.

The complex was found to contain average amounts of Asbestos-Containing Building Materials (ACBM) for the type, age and use of the facility. The asbestos building materials were mainly in the form of asbestos thermal system insulation and asbestos flooring materials. The roof systems of the facility were excluded from the assessment as we were instructed that they had recently been replaced with new rubber membrane roof systems.

BIOSAFE

Hidden or Inaccessible Materials

The scope of the survey was limited to accessible spaces and areas that the survey team could access with representatives of the Owner. As with any asbestos facility study the limitations are typically based on the buildings history and the people familiar with it and the accessibility of areas or materials.

The possibility for hidden or un-sampled / investigated PACM is a factor to consider resulting from the accessibility of areas and inability to conduct destructive sampling. During any facility operation including general maintenance, renovations, house keeping or general demolition should suspect PACM be encountered, the Owner should first refer to this report and if conclusive results can't be obtained, additional sampling / analysis must be conducted by a State of Maine Licensed Asbestos Inspector.

BOSAFE Associates appreciates the opportunity to assist you with project, should you have any additional needs or questions please feel free to contact us at anytime.

Sincerely,



Mark Coleman CIE, CMR
President

SECTION 2.0

ASBESTOS ANALYTICAL REPORTS

Asbestos Bulk Sample Summary
 110 Free St. Portland

SAMPLE NUMBER	LOCATION AREA	SAMPLE DESCRIPTION / COLOR	% ASBESTOS
B-1A	Sub-Basement	Pipe Insulation - White	10% Chrysotile 55% Amosite
B-1B	"	"	Stop Positive (Not Analyzed)
B-1C	"	"	Stop Positive (Not Analyzed)
B-2A	Sub-Basement	Mudded Fittings on Fiberglass - Brown/Gray	None Detected
B-2B	"	"	None Detected
B-2C	"	"	None Detected
B-3A	Through-out	12 x 12 Floor Tile - Blue	None Detected
B-3B	"	"	None Detected
B-3C	"	"	None Detected
B-3D	"	"	None Detected
B-3E	"	"	None Detected
B-4A	Through-out	12 x 12 Floor Tile - Gray	None Detected
B-4B	"	"	None Detected
B-4C	"	"	None Detected
B-4D	"	"	None Detected
B-4E	"	"	None Detected
B-5A	Through-out	12 x 12 Floor Tile - Green	None Detected
B-5A	"	Mastic - Yellow	None Detected
B-5B	"	12 x 12 Floor Tile - Green	None Detected
B-5B	"	Mastic - Yellow	None Detected
B-5C	"	12 x 12 Floor Tile - Green	None Detected
B-5C	"	Mastic - Yellow	None Detected
B-5D	"	12 x 12 Floor Tile - Green	None Detected
B-5D	"	Mastic - Yellow	Insufficient Material
B-5E	"	12 x 12 Floor Tile - Green	None Detected
B-5E	"	Mastic - Yellow	None Detected
B-6A	Through-out	12 x 12 Floor Tile Mastic - Black	3% Chrysotile
B-6B	"	"	Stop Positive (Not Analyzed)
B-6C	"	"	Stop Positive (Not Analyzed)
B-6D	"	"	Stop Positive (Not Analyzed)
B-6E	"	"	Stop Positive (Not Analyzed)
B-6F	"	"	Stop Positive (Not Analyzed)
B-6G	"	"	Stop Positive (Not Analyzed)

110 Free St. Portland

SAMPLE NUMBER	LOCATION AREA	SAMPLE DESCRIPTION / COLOR	% ASBESTOS
B-15A	Stairway	Stair Treads - Brown	None Detected
B-15A	"	Stair Tread Adhesive - Brown	None Detected
B-15B	"	Stair Treads - Brown	None Detected
B-15B	"	Stair Tread Adhesive - Brown	None Detected
B-15C	"	Stair Treads - Brown	None Detected
B-15C	"	Stair Tread Adhesive - Brown	None Detected
B-16A	1st Floor	Sheetrock - Brown/White	None Detected
B-16B	"	"	None Detected
B-16C	"	"	None Detected
B-17A	1st Floor	Joint Compound - Black	None Detected
B-17B	"	"	None Detected
B-17C	"	"	None Detected
B-18A	"	"	None Detected
B-18B	"	"	None Detected
B-18C	"	"	None Detected
B-19A	1st & 2nd Floors Mends Room	12 x 12 Floor Tile - Gray	None Detected
B-19B	"	"	None Detected
B-19C	"	"	None Detected
B-20A	2nd Floor	Sheetrock - White	None Detected
B-20B	"	"	None Detected
B-20C	"	"	None Detected
B-21A	2nd Floor	Joint Compound - White	None Detected
B-21B	"	"	None Detected
B-21C	"	"	None Detected
B-22A	Stairways	12 x 12 Floor Tile - Tan	2% Chrysotile
B-22B	"	"	Stop Positive (Not Analyzed)
B-22C	"	"	Stop Positive (Not Analyzed)
B-22D	"	"	Stop Positive (Not Analyzed)
B-22E	"	"	Stop Positive (Not Analyzed)
B-23A	3rd Floor Men's/Woman's	Linoleum - Various	None Detected
B-23B	"	"	None Detected
B-23C	"	"	None Detected
B-24A	3rd Floor	Sheetrock - Brown/Gray/White	None Detected
B-24B	"	"	None Detected
B-24C	"	"	None Detected

BIOSAFE



EMSL Analytical, Inc.

107 Haddon Ave., Westmont, NJ 08108

Phone: (856) 858-4800 Fax: (856) 858-1980 Email: westmontashlab@EMSL.com

Attn: Mark Coleman
Environmental Safety & Hygiene Assoc.
5 Delta Drive
Westbrook, ME 04092

Customer ID: ESH50
Customer PO:
Received: 09/23/09 10:30 AM
EMSL Order: 040923620

Fax:
Project: 110 FREE STREET

Phone:

EMSL Proj:
Analysis Date: 9/24/2009

Test Report: Asbestos Analysis of Bulk Materials via EPA 600/R-93/116 Method using Polarized Light Microscopy

Table with columns: Sample, Description, Appearance, Non-Asbestos (% Fibrous, % Non-Fibrous), Asbestos (% Type). Rows include samples B1A, B1B, B1C, B2A, B2B, B2C.

Analyst(s)
Delores Beard (98)

Signature: Stephen Siegel
Stephen Siegel, CIH, Laboratory Manager
or other approved signatory

Due to magnification limitations inherent in PLM, asbestos fibers in dimensions below the resolution capability of PLM may not be detected. The limit of detection, as stated in the report is 1%. The above test report relates only to the items tested and may not be reproduced in any form without the express written approval of EMSL Analytical, Inc. EMSL's liability is limited to the cost of analysis. EMSL bears no responsibility for sample collection activities or analytical method limitations. Interpretation and use of test results are the responsibility of the client. Samples received in good condition unless otherwise noted. This report must not be used to claim product endorsement by NVLAP or any agency of the U.S. Government. The test results meet all NELAP requirements unless otherwise specified.
Samples analyzed by EMSL Analytical, Inc. Westmont 107 Haddon Ave., Westmont NJ 08108. NVLAP 100104, NVLAP Lab Code 101043.0, NYS ELAP 10372, NJ DEP 04005



EMSL Analytical, Inc.

107 Haddon Ave., Westmont, NJ 08108

Phone: (856) 858-1800 Fax: (856) 352-4590 Email: westmont@emsl.com

Attn: Mark Coleman
Environmental Safety & Hygiene Assoc.
5 Delta Drive
Westbrook, ME 04092

Customer ID: ESH50
Customer PO:
Received: 09/23/09 10:30 AM
EMSL Order: 040923620

Fax:
Project: 110 FREE STREET

Phone:

EMSL Proj:
Analysis Date: 9/24/2009

Test Report: Asbestos Analysis of Bulk Materials via EPA 600/R-93/116 Method using Polarized Light Microscopy

Table with 6 columns: Sample, Description, Appearance, % Fibrous, % Non-Fibrous, Asbestos % Type. Rows include B4B, B4C, B4E, B5A-Floor Tile, B5A-Mastic, B5B-Floor Tile.

Analyst(s)

Delores Beard (98)

Signature of Stephen Siegel

Stephen Siegel, CIH, Laboratory Manager or other approved signatory

Due to magnification limitations inherent in PLM, asbestos fibers in dimensions below the resolution capability of PLM may not be detected. The limit of detection, as stated in the method is 1%. The above test report relates only to the items tested and may not be reproduced in any form without the express written approval of EMSL Analytical, Inc. EMSL's liability is limited to the cost of analysis. EMSL bears no responsibility for sample collection activities or analytical method limitations. Interpretation and use of test results are the responsibility of the client. Samples received in good condition unless otherwise noted. This report must not be used to claim product endorsement by NVLAP or any agency of the U.S. Government. The test results meet all NELAC requirements unless otherwise specified. Samples analyzed by EMSL Analytical, Inc. Westmont 107 Haddon Ave., Westmont NJ 08108. NVLAP Lab Code 101048-0, NYS ELAP 10872, NJ DEP 04092



EMSL Analytical, Inc.
 107 Haddon Ave., Westmont, NJ 08108
 Phone: (856) 388-1800 Fax: (856) 388-1980 Email: westmont@emsl.com

Attn: **Mark Coleman**
Environmental Safety & Hygiene Assoc.
5 Delta Drive
Westbrook, ME 04092

Customer ID: ESH50
 Customer PO:
 Received: 09/23/09 10:30 AM
 EMSL Order: 040923620

Fax:
 Project: 110 FREE STREET

Phone:

EMSL Proj:
 Analysis Date: 9/24/2009

Test Report: Asbestos Analysis of Bulk Materials via EPA 600/R-93/116 Method using Polarized Light Microscopy

Sample	Description	Appearance	Non-Asbestos		Asbestos
			% Fibrous	% Non-Fibrous	% Type
B6A 040923620-0022	12x12 FT MASTIC BLACK THROUGHOUT BLDG.	Black Non-Fibrous Homogeneous		97% Non-fibrous (other)	3% Chrysotile
B6B 040923620-0023	12x12 FT MASTIC BLACK THROUGHOUT BLDG.				Stop Positive (Not Analyzed)
B6C 040923620-0024	12x12 FT MASTIC BLACK THROUGHOUT BLDG.				Stop Positive (Not Analyzed)
B6D 040923620-0025	12x12 FT MASTIC BLACK THROUGHOUT BLDG.				Stop Positive (Not Analyzed)
B6E 040923620-0026	12x12 FT MASTIC BLACK THROUGHOUT BLDG.				Stop Positive (Not Analyzed)
B6F 040923620-0027	12x12 FT MASTIC BLACK THROUGHOUT BLDG.				Stop Positive (Not Analyzed)

Analyst(s)

Delores Beard (98)

Stephen Slegel, CIH, Laboratory Manager
 or other approved signatory

Due to magnification limitations inherent in PLM, asbestos fibers in dimensions below the resolution capability of PLM may not be detected. The limit of detection as stated in the report is 1%. The above test report relates only to the items tested and may not be reproduced in any form without the express written approval of EMSL Analytical, Inc. EMSL's liability is limited to the cost of analysis. EMSL bears no responsibility for sample collection activities or analytical method limitations. Interpretation and use of test results are the responsibility of the client. Samples received in good condition unless otherwise noted. This report must not be used to claim product endorsement by NVLAP or any agency of the U.S. Government. The test results meet all NELAC requirements unless otherwise specified.

Samples analyzed by EMSL Analytical, Inc. Westmont 107 Haddon Ave., Westmont NJ 08108, NVLAP Lab Code 101043 G, NYS ELAP 16873, NJ DEP 04006



EMSL Analytical, Inc.
 107 Haddon Ave., Westmont, NJ 08108
 Phone: (856) 858-4800 Fax: (856) 858-4880 Email: westmont@slab@EMSL.com

Attn: **Mark Coleman**
Environmental Safety & Hygiene Assoc.
5 Delta Drive
Westbrook, ME 04092

Customer ID: **ESH50**
 Customer PO:
 Received: **09/23/09 10:30 AM**
 EMSL Order: **040923620**

Fax:
 Project: **110 FREE STREET**

Phone:

EMSL Proj:
 Analysis Date: **9/24/2009**

Test Report: Asbestos Analysis of Bulk Materials via EPA 600/R-93/116 Method using Polarized Light Microscopy

Sample	Description	Appearance	Non-Asbestos		Asbestos
			% Fibrous	% Non-Fibrous	% Type
B8B-Mastic 040923620-0033A	BASEMENT 12x12 FT WHITE MULTI COLOR	Yellow Non-Fibrous Homogeneous		100% Non-fibrous (other)	None Detected
B8C-Floor Tile 040923620-0034	BASEMENT 12x12 FT WHITE MULTI COLOR	White Non-Fibrous Homogeneous		100% Non-fibrous (other)	None Detected
C-Mastic 040923620-0034A	BASEMENT 12x12 FT WHITE MULTI COLOR	Yellow Non-Fibrous Homogeneous		100% Non-fibrous (other)	None Detected
B9A 040923620-0035	2x4 CT WORM HOLD PATTERN THROUGHOUT	Brown/White Fibrous Heterogeneous	45% Cellulose 35% Min. Wool	20% Non-fibrous (other)	None Detected
B9B 040923620-0036	2x4 CT WORM HOLD PATTERN THROUGHOUT	Brown/White Fibrous Heterogeneous	45% Cellulose 35% Min. Wool	20% Non-fibrous (other)	None Detected
B9C 040923620-0037	2x4 CT WORM HOLD PATTERN THROUGHOUT	Brown/White Fibrous Heterogeneous	45% Cellulose 35% Min. Wool	20% Non-fibrous (other)	None Detected
B9D 040923620-0038	2x4 CT WORM HOLD PATTERN THROUGHOUT	Non-Fibrous Heterogeneous	45% Cellulose 35% Min. Wool	20% Non-fibrous (other)	None Detected

Analyst(s)

Delores Beard (98)

Stephen Siegel, CIH, Laboratory Manager
 or other approved signatory

Due to magnification limitations inherent in PLM, asbestos fibers in dimensions below the resolution capability of PLM may not be detected. The limit of detection, as stated in the Method is 1%. The above test report relates only to the items tested and may not be reproduced in any form without the express written approval of EMSL Analytical, Inc. EMSL's liability is limited to the cost of analysis. EMSL bears no responsibility for sample collection activities or analytical method limitations. Interpretation and use of test results are the responsibility of the client. Samples received in good condition unless otherwise noted. This report must not be used to claim product endorsement by NVLAP or any agency of the U.S. Government. The test results meet all NELAP requirements unless otherwise specified.
 Samples analyzed by EMSL Analytical, Inc. Westmont 107 Haddon Ave., Westmont NJ 08108, NVLAP Lab Code 101048 G, NYS ELAP 10872, NJ DEP 04505



EMSL Analytical, Inc.
 107 Haddon Ave., Westmont, NJ 08108
 Phone: (856) 963-1800 Fax: (856) 962-1960 Email: westmontslab@EMSL.com

Attn: **Mark Coleman**
Environmental Safety & Hygiene Assoc.
5 Delta Drive
Westbrook, ME 04092

Customer ID: ESH50
 Customer PO:
 Received: 09/23/09 10:30 AM
 EMSL Order: 040923620

Fax:
 Project: 110 FREE STREET

Phone:

EMSL Proj:
 Analysis Date: 9/24/2009

Test Report: Asbestos Analysis of Bulk Materials via EPA 600/R-93/116 Method using Polarized Light Microscopy

Sample	Description	Appearance	Non-Asbestos		Asbestos
			% Fibrous	% Non-Fibrous	% Type
B11B 040923620-0046	BASEMENT GENERATOR ROOM EXHAUST BREECHING				Stop Positive (Not Analyzed)
B11C 040923620-0047	BASEMENT GENERATOR ROOM EXHAUST BREECHING				Stop Positive (Not Analyzed)
B12A 040923620-0048	BASEMENT/1ST FLOOR CUSTODIAN ROOM 12x12 FT TAN	Brown Non-Fibrous Homogeneous		98% Non-fibrous (other)	2%: Chrysotile
B12B 040923620-0049	BASEMENT/1ST FLOOR CUSTODIAN ROOM 12x12 FT TAN				Stop Positive (Not Analyzed)
B12C 040923620-0050	BASEMENT/1ST FLOOR CUSTODIAN ROOM 12x12 FT TAN				Stop Positive (Not Analyzed)
B13A 040923620-0051	BASEMENT SHEETROCK	Brown/White Fibrous Heterogeneous	30% Cellulose 5% Glass	65% Non-fibrous (other)	None Detected

Analyst(s)

Delores Beard (98)

Stephen Siegel, CIH, Laboratory Manager
 or other approved signatory

Due to magnification limitations inherent in PLM, asbestos fibers in dimensions below the resolution capability of PLM may not be detected. The limit of detection, as stated in the procedure is 1%. This above test report relates only to the items tested and may not be reproduced in any form without the express written approval of EMSL Analytical, Inc. EMSL's liability is limited to the cost of analysis. EMSL bears no responsibility for sample collection activities or analytical method limitations. Interpretation and use of test results are the responsibility of the client. Samples received in good condition unless otherwise noted. This report must not be used to claim product endorsement by NVLAP or any agency of the U.S. Government. The test results meet all NELAP requirements unless otherwise specified.
 Samples analyzed by EMSL Analytical, Inc. Westmont 107 Haddon Ave., Westmont, NJ 08108, NVLAP ID# 10104, NVLAP Lab Code 101045-0, NYS ELAP 10072, NJ DEP 04006



EMSL Analytical, Inc.

107 Haddon Ave., Westmont, NJ 08108

Phone: (856) 858-1800 Fax: (856) 348-1960 Email: westmont@emsl.com

Attn: Mark Coleman
Environmental Safety & Hygiene Assoc.
5 Delta Drive
Westbrook, ME 04092

Customer ID: ESH50
Customer PO:
Received: 09/23/09 10:30 AM
EMSL Order: 040923620

Fax:
Project: 110 FREE STREET

Phone:

EMSL Proj:
Analysis Date: 9/24/2009

Test Report: Asbestos Analysis of Bulk Materials via EPA 600/R-93/116 Method using Polarized Light Microscopy

Table with 7 columns: Sample, Description, Appearance, % Fibrous, % Non-Fibrous, Asbestos % Type. Rows include B15B-Stair Tread, B15B-Adhesive, C-Stair Tread, B15C-Adhesive, B16A, B16B, and B16C.

Analyst(s)

Delores Beard (98)

Signature of Stephen Siegel

Stephen Siegel, CIH, Laboratory Manager or other approved signatory

Due to magnification limitations inherent in PLM, asbestos fibers in dimensions below the resolution capability of PLM may not be detected. The limit of detection as stated in the report is 1%. The above test report relates only to the items tested and may not be reproduced in any form without the express written approval of EMSL Analytical, Inc. EMSL's liability is limited to the cost of analysis. EMSL bears no responsibility for sample collection activities or analytical method limitations. Interpretation and use of test results are the responsibility of the client. Samples received in good condition unless otherwise noted. This report must not be used to claim product endorsement by NVLAP or any agency of the U.S. Government. The test results meet all NELAC requirements unless otherwise specified.
Samples analyzed by EMSL Analytical, Inc. Westmont 107 Haddon Ave., Westmont NJ AIHA IHLAP 100194, NVLAP Lab Code 101048-0, NYS ELAP 18872, NJ DEP 04006



EMSL Analytical, Inc.
 107 Haddon Ave., Westmont, NJ 08108
 Phone: (856) 958-4900 Fax: (856) 958-4980 Email: westmontashlab@EMSL.com

Attn: **Mark Coleman**
Environmental Safety & Hygiene Assoc.
5 Delta Drive
Westbrook, ME 04092

Customer ID: ESH50
 Customer PO:
 Received: 09/23/09 10:30 AM
 EMSL Order: 040923620

Fax:
 Project: 110 FREE STREET

Phone:

EMSL Proj:
 Analysis Date: 9/24/2009

Test Report: Asbestos Analysis of Bulk Materials via EPA 600/R-93/116 Method using Polarized Light Microscopy

Sample	Description	Appearance	Non-Asbestos		Asbestos
			% Fibrous	% Non-Fibrous	% Type
B19B 040923620-0070	1ST & 2ND FLOOR MEN'S ROOM 12x12 FT GRAY	White Non-Fibrous Homogeneous		100% Non-fibrous (other)	None Detected
B19C 040923620-0071	1ST & 2ND FLOOR MEN'S ROOM 12x12 FT GRAY	White Non-Fibrous Homogeneous		100% Non-fibrous (other)	None Detected
B20A 040923620-0072	2ND FLOOR SHEETROCK	White Fibrous Homogeneous	10% Glass	90% Non-fibrous (other)	None Detected
B20B 040923620-0073	2ND FLOOR SHEETROCK	White Fibrous Homogeneous	10% Glass	90% Non-fibrous (other)	None Detected
B20C 040923620-0074	2ND FLOOR SHEETROCK	White Fibrous Homogeneous	10% Glass	90% Non-fibrous (other)	None Detected
B21A 040923620-0075	2ND FLOOR JOINT COMPOUND	White Non-Fibrous Homogeneous		100% Non-fibrous (other)	None Detected
B21B 040923620-0076	2ND FLOOR JOINT COMPOUND	White Non-Fibrous Homogeneous		100% Non-fibrous (other)	None Detected

Analyst(s)

Delores Beard (98)

Stephen Siegel, CIH, Laboratory Manager
 or other approved signatory

Due to magnification limitations inherent in PLM, asbestos fibers in dimensions below the resolution capability of PLM may not be detected. The limit of detection as stated in the method is 1%. The above test report relates only to the items tested and may not be reproduced in any form without the express written approval of EMSL Analytical, Inc. EMSL's liability is limited to the cost of analysis. EMSL bears no responsibility for sample collection activities or analytical method limitations. Interpretation and use of test results are the responsibility of the client. Samples received in good condition unless otherwise noted. This report must not be used to claim product endorsement by NVLAP or any agency of the U.S. Government. The test results meet all NELAP requirements unless otherwise specified.
 Samples analyzed by EMSL Analytical, Inc. Westmont 107 Haddon Ave., Westmont NJ 08108. NVLAP Lab Code 101048-0, NYS ELAP 10672, NJ DEP 04006



EMSL Analytical, Inc.

107 Haddon Ave., Westmont, NJ 08108

Phone: (856) 858-1900 Fax: (856) 858-1960 EMAIL: westmont@emsl.com

Attn: Mark Coleman
Environmental Safety & Hygiene Assoc.
5 Delta Drive
Westbrook, ME 04092

Customer ID: ESH50
Customer PO:
Received: 09/23/09 10:30 AM
EMSL Order: 040923620

Fax:
Project: 110 FREE STREET

Phone:

EMSL Proj:
Analysis Date: 9/24/2009

Test Report: Asbestos Analysis of Bulk Materials via EPA 600/R-93/116 Method using Polarized Light Microscopy

Table with 7 columns: Sample, Description, Appearance, % Fibrous, % Non-Fibrous, Asbestos % Type. Rows include samples B24A through B26A with details on location (3RD FLOOR SHEETROCK, JOINT COMPOUND, PLASTER TOP COAT) and results (None Detected).

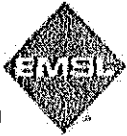
Analyst(s)

Delores Beard (98)

Handwritten signature of Stephen Siegel

Stephen Siegel, CIH, Laboratory Manager or other approved signatory

Due to magnification limitations inherent in PLM, asbestos fibers in dimensions below the resolution capability of PLM may not be detected. The limit of detection, as stated in the method is 1%. The above test report relates only to the items tested and may not be reproduced in any form without the express written approval of EMSL Analytical, Inc. EMSL's liability is limited to the cost of analysis. EMSL bears no responsibility for sample collection activities or analytical method limitations. Interpretation and use of test results are the responsibility of the client. Samples received in good condition unless otherwise noted. This report must not be used to claim product endorsement by NVLAP or any agency of the U.S. Government. The test results meet all NELAC requirements unless otherwise specified.
Samples analyzed by EMSL Analytical, Inc. Westmont 107 Haddon Ave., Westmont NJ 08108. NVLAP 100194, NVLAP Lab Code 101048-0, NYS ELAP 10872, NJ DEP 04006.



EMSL Analytical, Inc.
107 Haddon Ave., Westmont, NJ 08108

Phone: (856) 853-4600 Fax: (856) 860-4960 Email: westmontlab@EMSL.com

Attn: **Mark Coleman**
Environmental Safety & Hygiene Assoc.
5 Delta Drive
Westbrook, ME 04092

Customer ID: ESH50
Customer PO:
Received: 09/23/09 10:30 AM
EMSL Order: 040923620

Fax:
Project: 110 FREE STREET

Phone:

EMSL Proj:
Analysis Date: 9/24/2009

Test Report: Asbestos Analysis of Bulk Materials via EPA 600/R-93/116 Method using Polarized Light Microscopy

Sample	Description	Appearance	Non-Asbestos		Asbestos
			% Fibrous	% Non-Fibrous	% Type
B27B 040923620-0098	PLASTER BASE COAT THROUGHOUT	Brown Fibrous Homogeneous	3% Cellulose	97% Non-fibrous (other)	None Detected
B27C 040923620-0099	PLASTER BASE COAT THROUGHOUT	Brown Fibrous Homogeneous	<1% Cellulose	100% Non-fibrous (other)	None Detected
B27D 040923620-0100	PLASTER BASE COAT THROUGHOUT	Brown Fibrous Homogeneous	5% Cellulose	95% Non-fibrous (other)	None Detected
B27E 040923620-0101	PLASTER BASE COAT THROUGHOUT	Brown Fibrous Homogeneous	5% Cellulose	95% Non-fibrous (other)	None Detected
B27F 040923620-0102	PLASTER BASE COAT THROUGHOUT	Brown Fibrous Homogeneous	<1% Cellulose	100% Non-fibrous (other)	None Detected
B27G 040923620-0103	PLASTER BASE COAT THROUGHOUT	Brown Fibrous Homogeneous	5% Cellulose	95% Non-fibrous (other)	None Detected
B28B 040923620-0105	1ST FLOOR JOINT COMPOUND	Brown/White Fibrous Heterogeneous	20% Cellulose	80% Non-fibrous (other)	None Detected

Analyst(s)

Delores Beard (98)

Stephen Siegel, CIH, Laboratory Manager
or other approved signatory

to magnification limitations inherent in PLM, asbestos fibers in dimensions below the resolution capability of PLM may not be detected. The limit of detection as stated in the method is 1%. The above test report relates only to the items tested and may not be reproduced in any form without the express written approval of EMSL Analytical, Inc. EMSL's liability is limited to the cost of analysis. EMSL bears no responsibility for sample collection activities or analytical method limitations. Interpretation and use of test results are the responsibility of the client. Samples received in good condition unless otherwise noted. This report must not be used to claim product endorsement by NVLAP or any agency of the U.S. Government. The test results meet all NELAC requirements unless otherwise specified.
Samples analyzed by EMSL Analytical, Inc. Westmont 107 Haddon Ave., Westmont NJ AIHA HPLAP 100194, NVLAP Lab Code 101048-0, NYS ELAP 10872, NJ DEP 04006.



CHAIN OF CUSTODY FORM

040923620

SAMPLE NUMBER	SAMPLE DESCRIPTION/LOCATION	VOLUME Air (L)	AREA (Inches sq.)
B1A-B1C	SUB-BASEMENT PINK INSULATION INT. PIPE CASING		
B2A-B2C	SUB-BASEMENT MUDROCK FITTINGS ON PIPES		
B3A-B3C	12" X 12" FT BLUE THROUGHOUT BLOCK		
B4A-B4C	12" X 12" FT GRAY THROUGHOUT BLOCK		
B5A-B5C	12" X 12" FT GREEN THROUGHOUT BLOCK		
B6A-B6C	12" X 12" FT MASTIC BLACK THROUGHOUT BLOCK		
B7A-B7C	BASMENT PINKS LOCKER LIND. GRAY-MULTI-COLOR		
B8A-B8C	BASMENT 12" X 12" FT WHITE/MULTI-COLOR		
B9A-B9C	2' X 4' CT WOODGRAN PATTERN THROUGHOUT		
B10A-B10C	BASMENT MUDROCK FITTINGS		
B11A-B11C	BASMENT CONDENSER ROOM EXHAUST BRACKETING		
B12A-B12C	BASMENT/1ST FLOOR CUSTOMARY ROOM 12" X 12" FT TAN		
B13A-B13C	BASMENT STREET ROCK		
B14A-B14C	BASMENT JOINT COMPOUND		
B15A-B15C	SPINWAY- STAIRWELL- BROWN		
B16A-B16C	1ST FLOOR STREET ROCK		
B17A-B17C	1ST FLOOR JOINT COMPOUND		
B18A-B18C	1ST, 2nd, 3rd FLOOR FLOOR LULLER - (BAY)		
B19A-B19C	1ST+2ND FLOOR PINKS ROOM 3rd FLOOR STREET ROCK 12" X 12" FT GRAY		
B20A-B20C	2nd FLOOR STREET ROCK		

SAMPLES ACCEPTED FOR ANALYSIS BY EMSL ANALYTICAL INC.
 RECEIVED
 EMSL
 WESTMONT NJ
 09 SEP 01 AM 11:33

Client Sample # (S) B1A B25C TOTAL SAMPLE # _____
 Relinquished: [Signature] Date: 9-22-03 Time: 1630
 Received: _____ Date: _____ Time: _____
 Relinquished: _____ Date: _____ Time: _____
 Received: DM-FX-1030A Date: 9-23-9 Time: _____

109



Chain of Custody Asbestos Lab Services

EMSL Analytical, Inc.
107 Hackton Avenue
Westmont, NJ 08108
Phone: (856) 858-4800
Fax: (856) 858-4960
(856) 427-1608
<http://www.emsl.com>

Please print all information legibly.

040923620

Company:	ESHA	Bill To:	ESHA
Address 1:	5 Delta Drive	Address 1:	5 Delta Drive
Address 2:		Address 2:	
City, State:	Westbrook, ME	City, State:	Westbrook, ME
Zip/Post Code:	04092	Zip/Post Code:	04092
Country:		Country:	
Contact Name:	Mark Coleman	Attn:	Mark Coleman
Phone:	207-854-2711	Phone:	207-854-2711
Fax:		Fax:	
Email:	mpc@esha.net	Email:	mpc@esha.net
EMSL Rep:		P.O. Number:	
Project Name/Number: 110 FREE STREET			

MATRIX			TURNAROUND			
<input type="checkbox"/> Air	<input type="checkbox"/> Soil	<input type="checkbox"/> Micro-Vac	<input type="checkbox"/> 3 Hours	<input type="checkbox"/> 6 Hours	<input checked="" type="checkbox"/> 24 Hours (1 day)	
<input checked="" type="checkbox"/> Bulk	<input type="checkbox"/> Drinking Water		<input type="checkbox"/> 48 Hours (2 days)	<input type="checkbox"/> 72 Hours (3 days)	<input type="checkbox"/> 96 Hours (4 days)	<input type="checkbox"/> 120 Hours (5 days)
<input type="checkbox"/> Wipe	<input type="checkbox"/> Wastewater		<input type="checkbox"/> 144+ hours (6-10 days)			

TEM AIR, 3 hours, 6 hours. Please call ahead to schedule. There is a premium charge for 3-hour lab, please call 1-800-220-3675 for price prior to sending samples. You will be asked to sign an authorization form for this service.

NEED BY NOON THURSDAY

PCM - Air <input type="checkbox"/> NIOSH 7400(A) Issue 2: August 1994 <input type="checkbox"/> OSHA w/TWA <input type="checkbox"/> Other:	TEM Air <input type="checkbox"/> AHERA 40 CFR, Part 763 Subpart E <input type="checkbox"/> NIOSH 7402 <input type="checkbox"/> EPA Level II	TEM WATER <input type="checkbox"/> EPA 100.1 <input type="checkbox"/> EPA 100.2 <input type="checkbox"/> NYS 198.2
PLM - Bulk <input checked="" type="checkbox"/> EPA 600/R-93/116 <input checked="" type="checkbox"/> EPA Point Count <input type="checkbox"/> NY Stratified Point Count <input type="checkbox"/> PLM NOB (Gravimetric) NYS 198.1 <input type="checkbox"/> NIOSH 9002: <input type="checkbox"/> EMSL Standard Addition:	TEM BULK <input type="checkbox"/> Drop Mount (Qualitative) <input type="checkbox"/> Charfield SOP - 1983-02 <input type="checkbox"/> TEM NOB (Gravimetric) NYS 198.1 <input type="checkbox"/> EMSL Standard Addition:	TEM Microvac/Wipe <input type="checkbox"/> ASTM D 5755-95 (quantitative) <input type="checkbox"/> Wipe Qualitative
SEM Air or Bulk <input type="checkbox"/> Qualitative <input type="checkbox"/> Quantitative	PLM Soil <input type="checkbox"/> EPA Protocol Qualitative <input type="checkbox"/> EPA Protocol Quantitative <input type="checkbox"/> EMSL MSD 9000 Method fibers/gram	XRD <input type="checkbox"/> Asbestos <input type="checkbox"/> Silica NIOSH 7500
		OTHER <input type="checkbox"/>

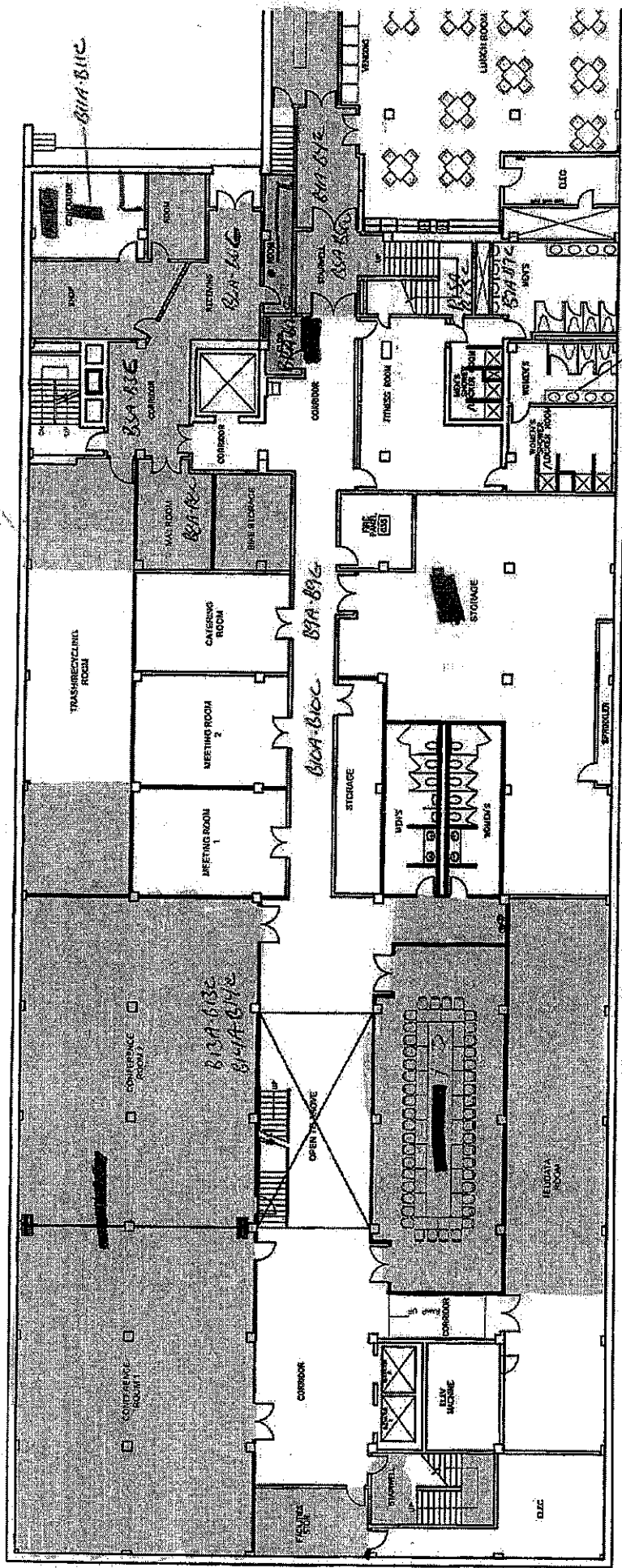
EMSL ANALYTICAL INC.
SAMPLES ACCEPTED FOR ANALYSIS BY

SECTION 3.0

LEAD ANALYTICAL REPORTS

SECTION 4.0

ASBESTOS LOCATION DRAWINGS



EXIST. TO REMAIN WITH COMPLIANCE
UPDATES/RENOVATIONS AS NEEDED

ASBESTOS CONTAINING FIBRILS

ASBESTOS CONTAINING THERMAL SYSTEM
INSULATION - MURDED FITTINGS PIPE INSULATION
EXHAUST BRACES/HANGING

ASBESTOS CONTAINING 12" X 12" FT

SCHEME 2 - BASEMENT FLOOR PLAN

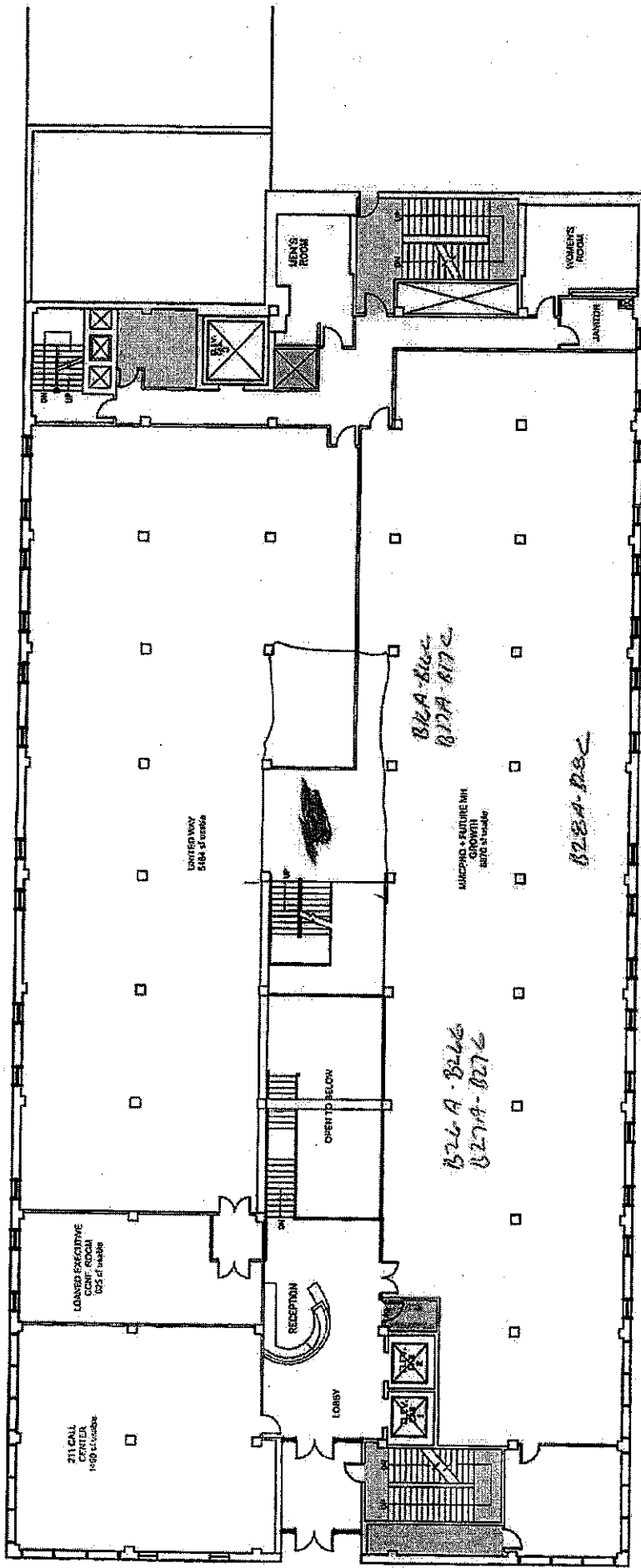
110 Free Street Analysis for MairHealth & United Way
27 February 2009

HARRIMAN

Architects + Engineers



1/16" = 1'-0"



SCHEME 2 - FIRST FLOOR PLAN

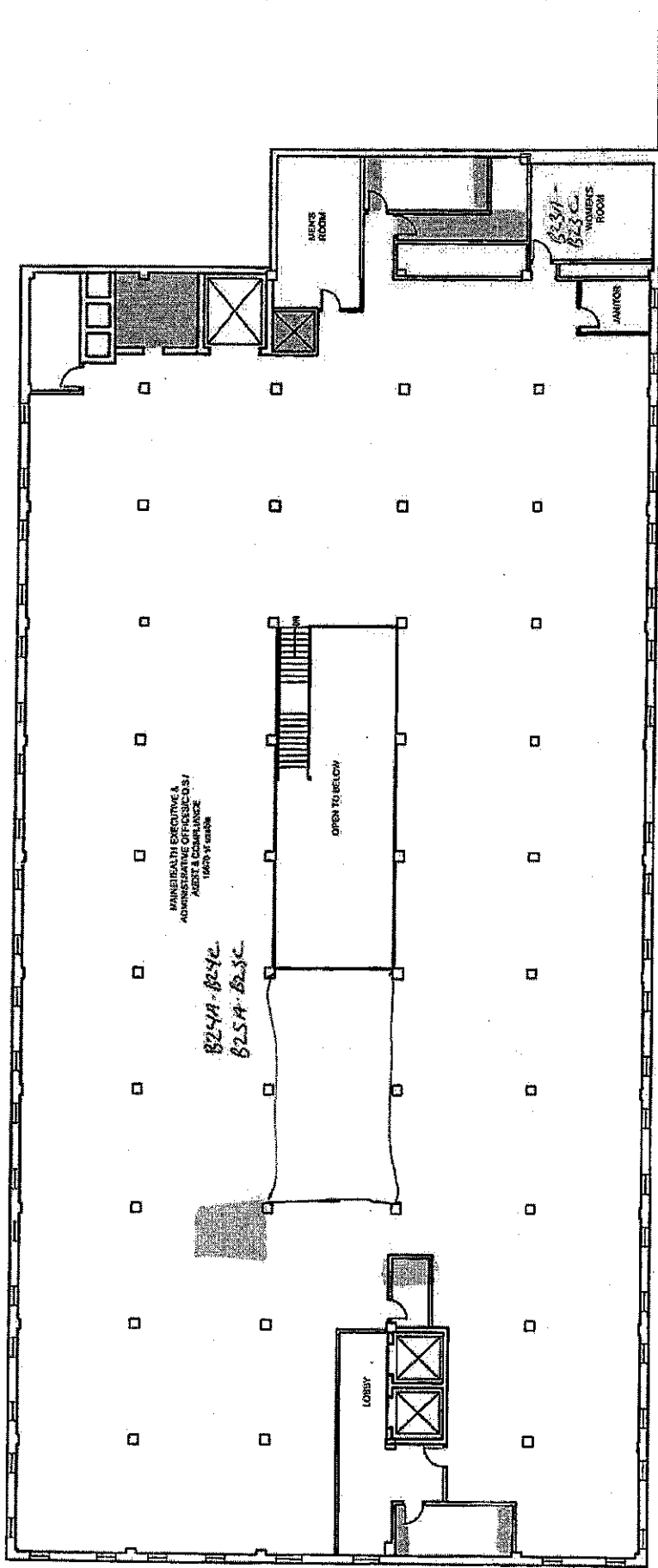
110 Free Street Analysis for MaineHealth & United Way
27 February 2009

HARRIMAN

Architects + Engineers



1/16" = 1'-0"



SCHEME 2 - THIRD FLOOR PLAN

110 First Street Analysis for ManneHealth & United Way
27 February 2009

HARRIMAN

Architects + Engineers

