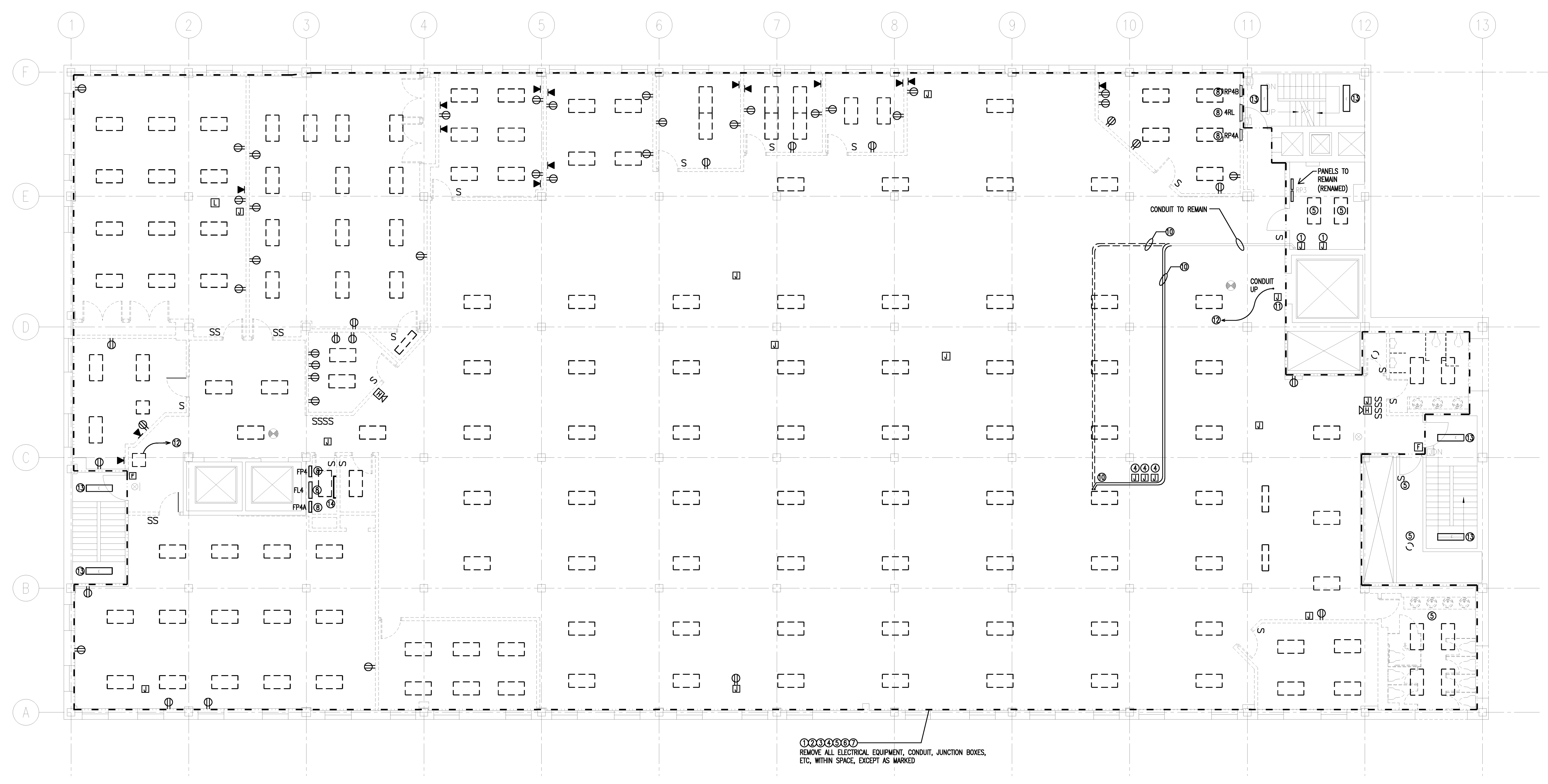


Project Title  
**110 FREE STREET  
BUILDING  
RENOVATIONS**  
PORTLAND, MAINE

HA Project No. **09146**

Key Plan



**DEMOLITION KEY NOTES**

- ① REMOVE EXISTING JUNCTION BOXES, RECEPTACLES, TEL/DATA JACKS, CONDUIT AND CONDUCTORS BACK TO SOURCE.
- ② REMOVE EXISTING JUNCTION BOXES, RECEPTACLES, CONDUIT AND CONDUCTORS FROM OLD FIRE ALARM SYSTEMS.
- ③ REMOVE EXISTING JUNCTION BOXES, CONDUIT AND CONDUCTORS FOR OLD CLOCK SYSTEM BACK TO SOURCE.
- ④ REMOVE EXISTING ABANDONED JUNCTION BOXES, CONDUIT AND CONDUCTORS MOUNTED ON CEILING/SLAB.
- ⑤ REMOVE EXISTING LIGHTING FIXTURES, SWITCHES, CONDUIT AND CONDUCTORS BACK TO SOURCE.
- ⑥ REMOVE EXISTING FIRE ALARM DEVICES, CONDUIT AND CONDUCTORS BACK TO SOURCE.
- ⑦ REMOVE EXISTING EXIT SIGN, CONDUIT AND CONDUCTORS BACK TO SOURCE.
- ⑧ REMOVE EXISTING ELECTRICAL PANEL, CONDUIT AND CONDUCTORS BACK TO SOURCE.
- ⑨ REMOVE EXISTING LIGHT FIXTURE. REMOVE CONDUCTORS BACK TO SOURCE. EXISTING JUNCTION BOXES AND CONDUIT TO REMAIN FOR REUSE IN NEW WORK.
- ⑩ INTERCEPT/PULL BACK CONDUCTORS AND REMOVE/RELOCATE AND/OR PROVIDE NEW CONDUIT TO EXISTING CHILLER ON ROOF AS SHOWN. RELOCATE TIGHT TO CEILING.
- ⑪ REMOVE EXISTING JUNCTION BOX, CONDUIT AND CONDUCTORS FOR EXHAUST FAN, CIRCUIT 17.
- ⑫ REMOVE EXISTING NON-METALLIC CABLE FROM CEILING AND DISCONTINUED EXHAUST FAN BACK TO SOURCE.
- ⑬ EXISTING STAIRWELL FIXTURES SHALL BE MADE OPERABLE. REPLACE BALLASTS AND PROVIDE NEW FLOURESCENT LAMPS AND LENSES WHERE NEEDED.
- ⑭ REMOVE EXISTING BACKBOARD, PUNCHDOWN BLOCKS AND COMMUNICATIONS CABLING BACK TO SOURCE.

**DEMOLITION GENERAL NOTES**

- 1. REMOVE ALL EXISTING NON METALLIC CABLE AND RELATED JUNCTION BOXES BACK TO SOURCE.
- 2. LOCATIONS AND QUANTITIES OF LIGHTING FIXTURES AND OTHER ELECTRICAL DEVICES ARE DERIVED FROM EXISTING DRAWINGS AND SITE OBSERVATIONS. NOT ALL LIGHT FIXTURES AND/OR ELECTRICAL DEVICES MAY BE SHOWN.
- 3. DEVICE/EQUIPMENT SHOWN WITH "E" IS EXISTING TO REMAIN.

Mark	Date	Description
	11/25/09	ISSUED FOR BID

Drawing Status

Drawing Title  
**ELECTRICAL  
DEMOLITION  
THIRD FLOOR PLAN**

PA / PE: WRH Drawn By: RJB

Drawing Number  
**ED06.3**