

PLUMBING FIXTURE SCHEDULE										NOTES		
FIXTURE		PLUMBING		GAS								
ITEM	DESCRIPTION	MOUNTING HEIGHT	MANUF.	MODEL NUMBER	HW	CW	SW	SWW	IW	PIPE	BTU	
WC-1	WATER CLOSET	17"	TOTO	CT708	---	1"	4"	2"	---	---	---	---
WC-2	WATER CLOSET	15"	TOTO	CT708	---	1"	4"	2"	---	---	---	
WC-3	WATER CLOSET	17"	TOTO	CT708LN	---	1"	4"	2"	---	---	---	
WC-4	WATER CLOSET	15"	TOTO	CT708LN	---	1"	4"	2"	---	---	---	
U-1	URINAL	17"	TOTO	UT104EV	---	1"	2"	1 1/2"	---	---	---	
U-2	URINAL	17"	TOTO	UT104	---	1"	2"	1 1/2"	---	---	---	
L-1	LABATORY	COUNTER MOUNTED	W/COUNTER	W/COUNTER	---	1"	2"	1 1/2"	---	---	---	
L-2	LABATORY	WALL MOUNTED	ZURN	Z5365-PED	---	1"	2"	1 1/2"	---	---	---	
SK-1	COUNTER SINK	COUNTER MOUNTED	SOLID SURFACE	W/COUNTER	---	1"	2"	1 1/2"	---	---	---	
SK-2	COUNTER SINK	COUNTER MOUNTED	SOLID SURFACE	W/COUNTER	---	1"	2"	1 1/2"	---	---	---	
SK-3	COUNTER SINK	COUNTER MOUNTED	SOLID SURFACE	W/COUNTER	---	1"	2"	1 1/2"	---	---	---	
SK-4	COUNTER SINK	COUNTER MOUNTED	ELKAY	18A02222	---	1"	2"	1 1/2"	---	---	---	
SH-1	ROLL-IN SHOWER	40" TO VALVE	BUILT IN PLACE	---	---	1"	2"	1 1/2"	---	---	---	
SH-2	SHOWER	40" TO VALVE	BUILT IN PLACE	---	---	1"	2"	1 1/2"	---	---	---	
MR-1	MOP RECEPTOR	FLOOR MOUNTED	FLORESTONE	82 LH	---	1"	2"	1 1/2"	---	---	---	
MR-2	MOP RECEPTOR	FLOOR MOUNTED	FLORESTONE	82 RH	---	1"	2"	1 1/2"	---	---	---	
DH-1	DRENCH HOSE	WALL MOUNTED	CLAWSON	CS0468P	---	1"	2"	1 1/2"	---	---	---	
WD-1	POLI WATER DISPENSER	DECK MOUNTED	NEWPORT BRASS	106C	---	1"	2"	1 1/2"	---	---	---	
WD-2	POLI WATER DISPENSER	WALL MOUNTED	HALSEY TAYLOR	HTHB-8	---	1"	2"	1 1/2"	---	---	---	
WC-3	POLI WATER DISPENSER	COUNTER MOUNTED	CHILLER'S COUNT	---	---	1"	2"	1 1/2"	---	---	---	
WC-1	WATER COOLER	34" TO	HALSEY TAYLOR	OLV-1 SERP	---	1"	2"	1 1/2"	---	---	---	
DW-1	DISH WASHER AIR GAP	COUNTER MOUNTED	WATTS	WB775SCH	---	---	---	---	---	---	---	
FD-1	FLOOR DRAIN	FLUSH WITH FLOOR	WATTS	FD-100-(16-7)	---	1"	2"	1 1/2"	---	---	---	
FD-2	FLOOR DRAIN	FLUSH WITH FLOOR	WATTS	FD-100-(16-7)	---	1"	2"	1 1/2"	---	---	---	
FD-3	FLOOR DRAIN	FLUSH WITH FLOOR	WATTS	FD-100-(16-7)	---	1"	2"	1 1/2"	---	---	---	
RD-1	ROOF DRAIN	ROOF	WATTS	RD-100	---	1"	2"	1 1/2"	---	---	---	
WH-1	ELECTRIC WATER HEATER	UNDER CABINET	CHRONOMITE	M-40	---	1"	2"	1 1/2"	---	---	---	
WH-2	ELECTRIC WATER HEATER	UNDER SINK	CHRONOMITE	M-20L	---	1"	2"	1 1/2"	---	---	---	
SP-1	SW SIMPLEX PUMP	SUB BASEMENT	ZOLLER	912-0116	---	---	---	---	---	---	---	
SP-2	SD DUPLEX PUMP	SUB BASEMENT	WEL	175	---	---	---	---	---	---	---	
SP-3	ELEVATOR SUMP PUMP	AS REQUIRED	STANDCOR	SE-50	---	---	---	---	---	---	---	
TMV-1	TEMP MIXING VALVE	SUB BASEMENT	POWERS	1432-HL	---	2"	1 1/2"	---	---	---	---	

HARRIMAN
Architects + Engineers

46 Harriman Drive
Auburn, ME 04210
207.784.5100 tel

123 Middle Street
Portland, ME 04101
207.775.0053 tel

Old Parliament Road
Manchester, NH 03103
603.626.1242 tel

www.harriman.com
© 2009

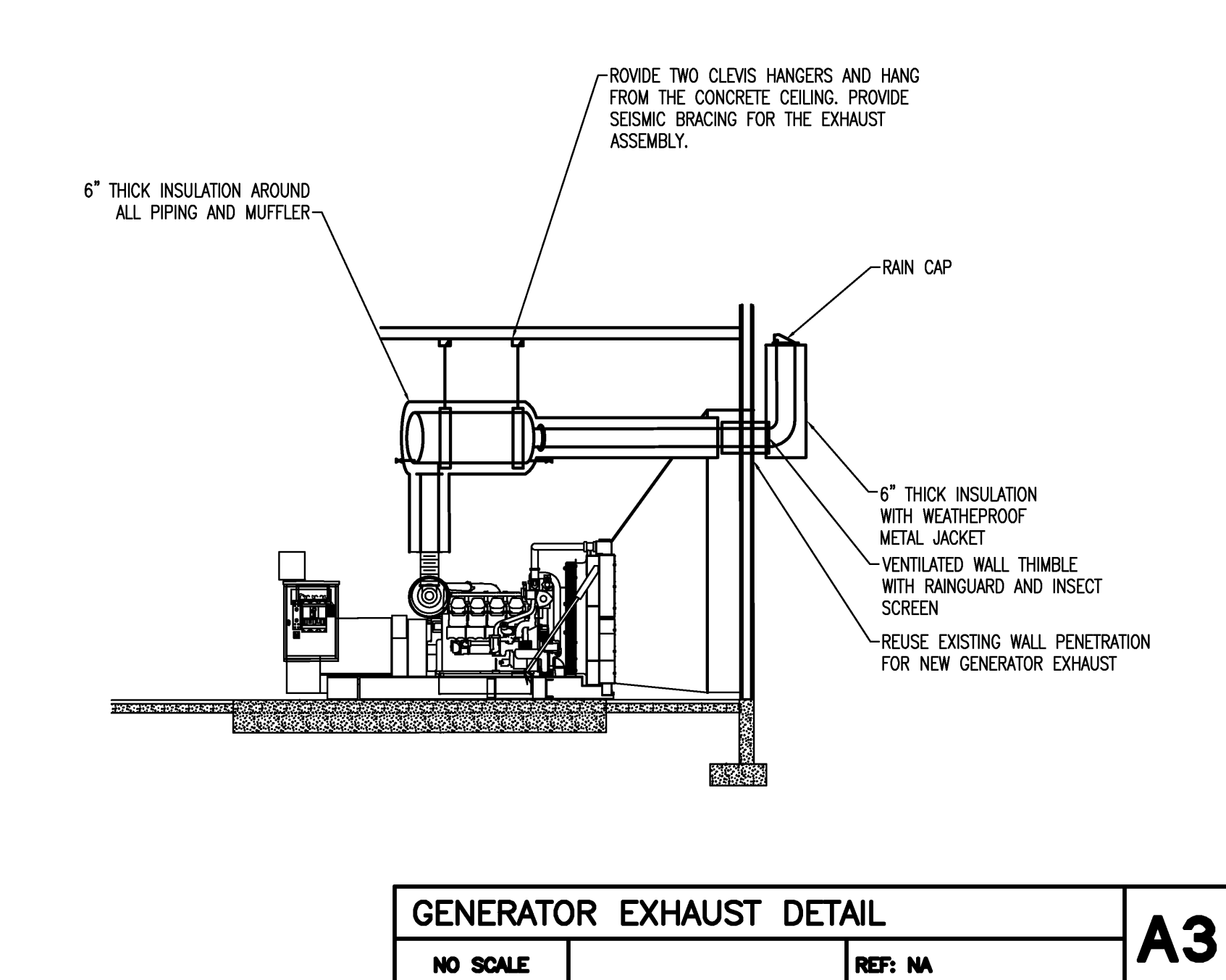
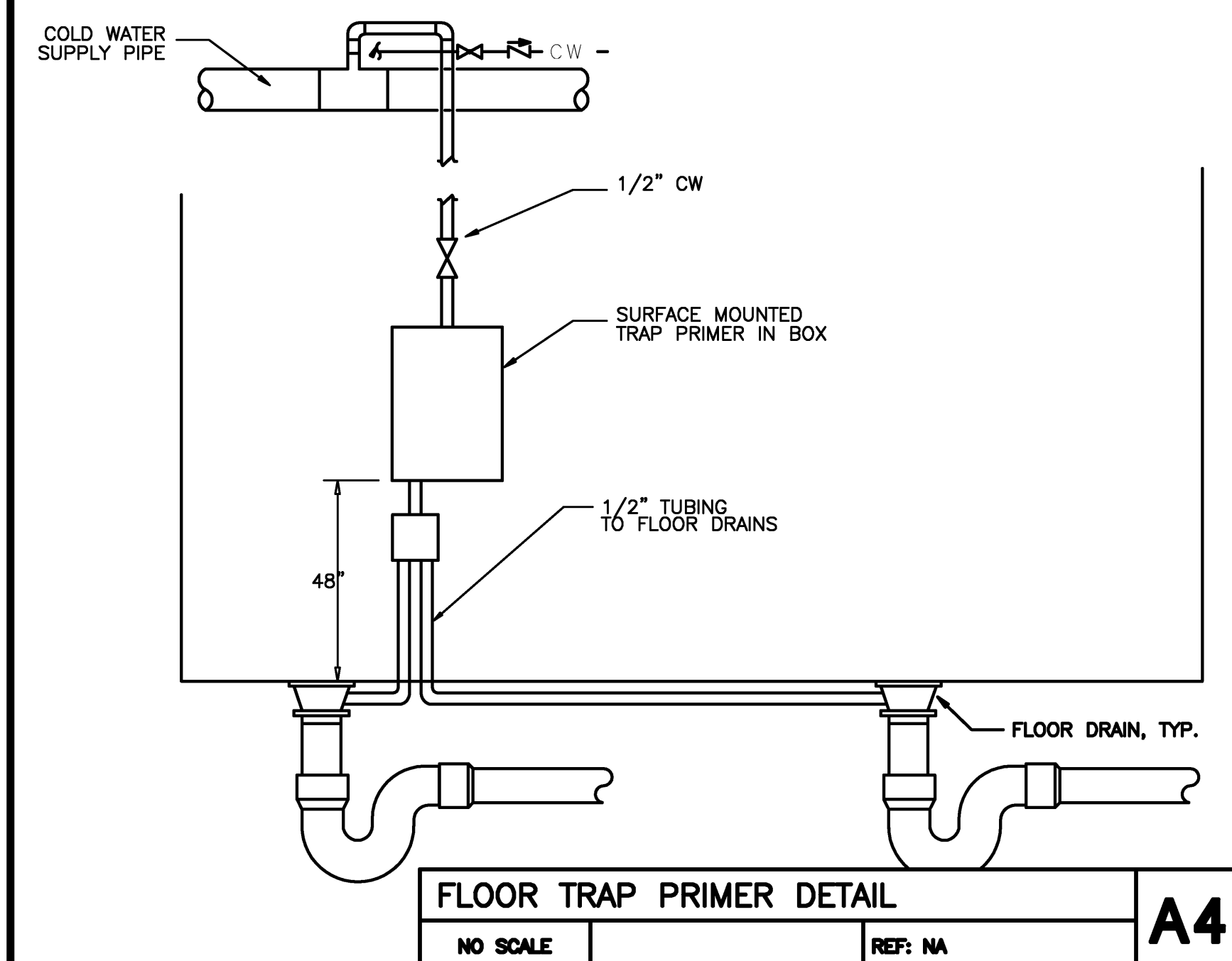
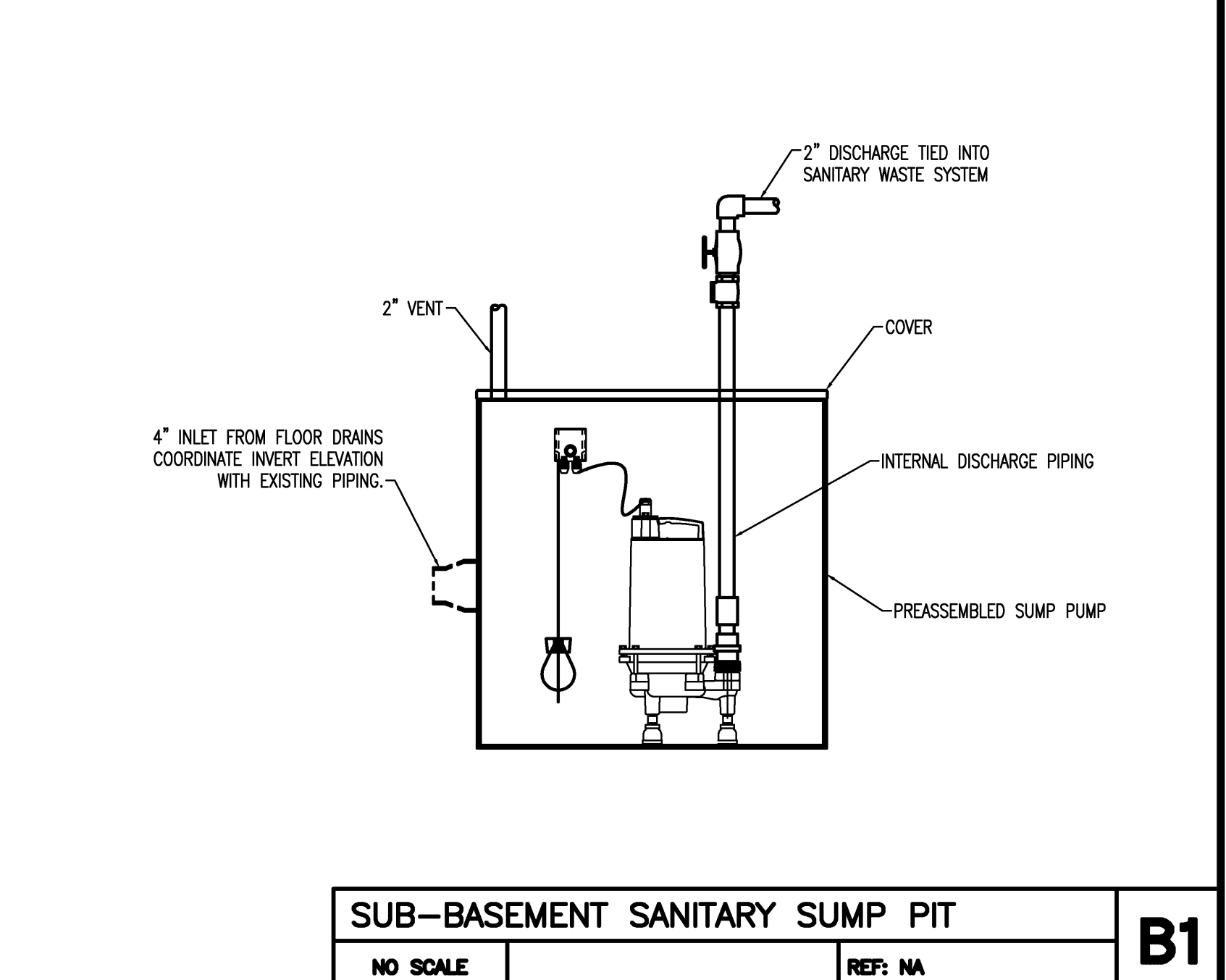
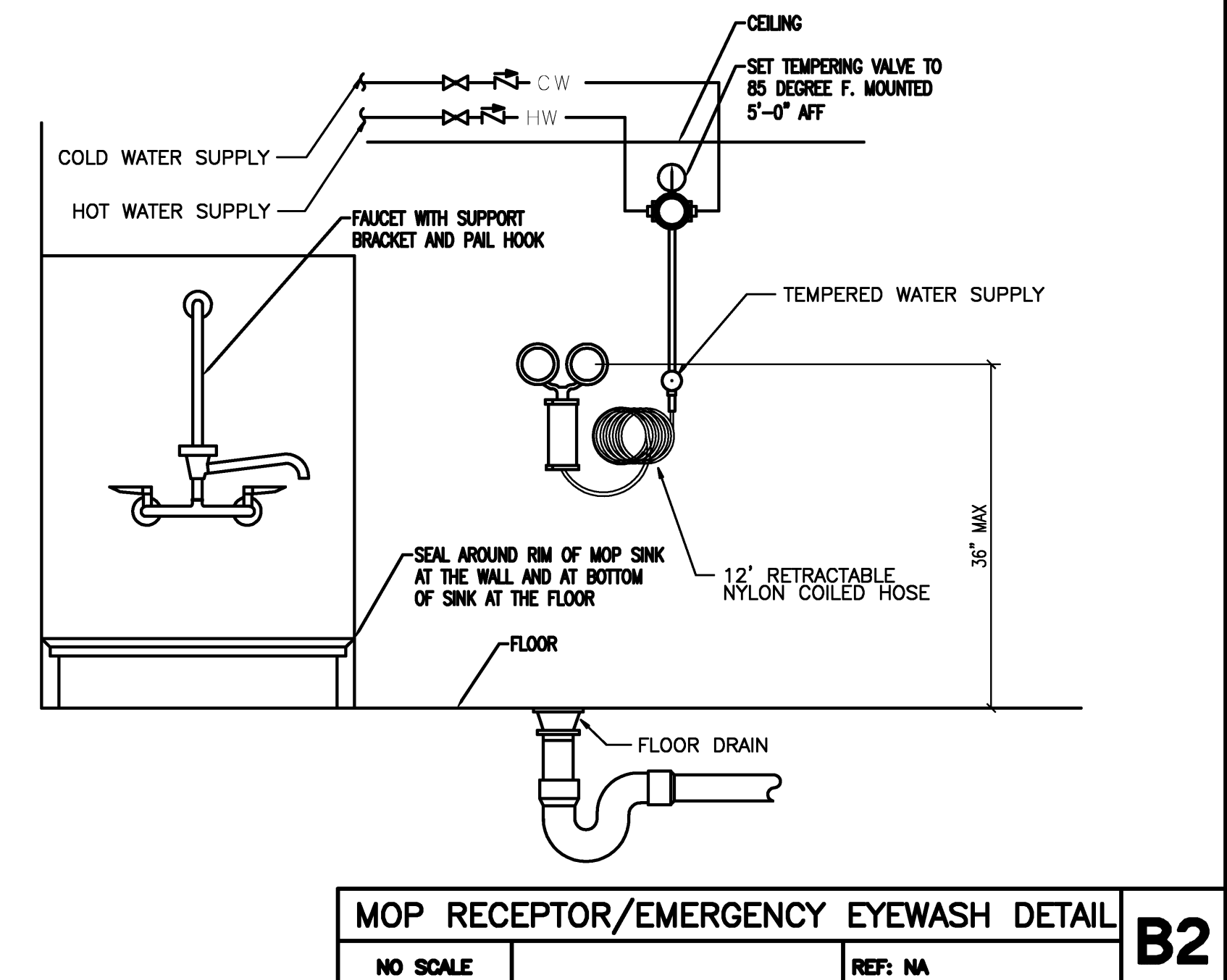
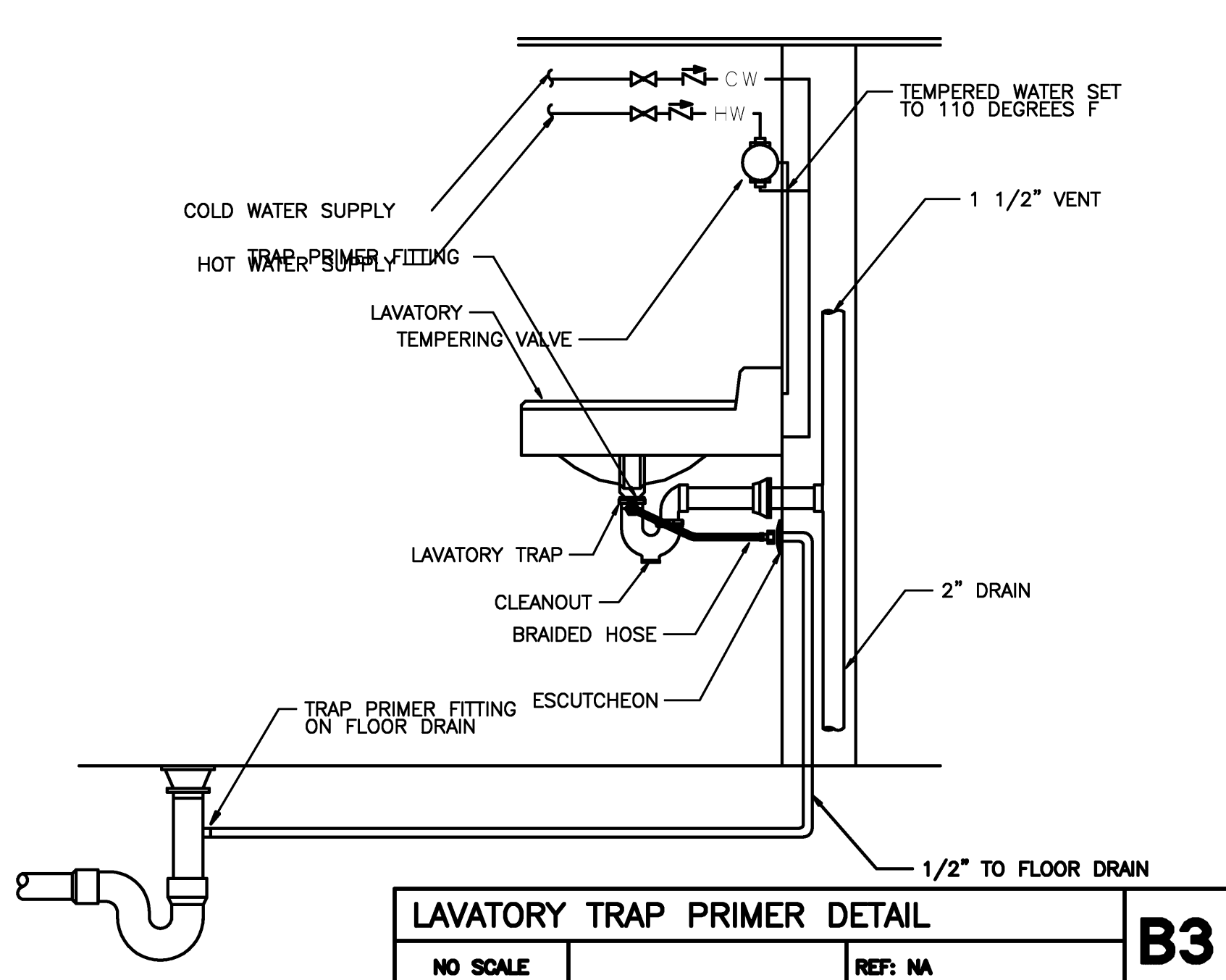
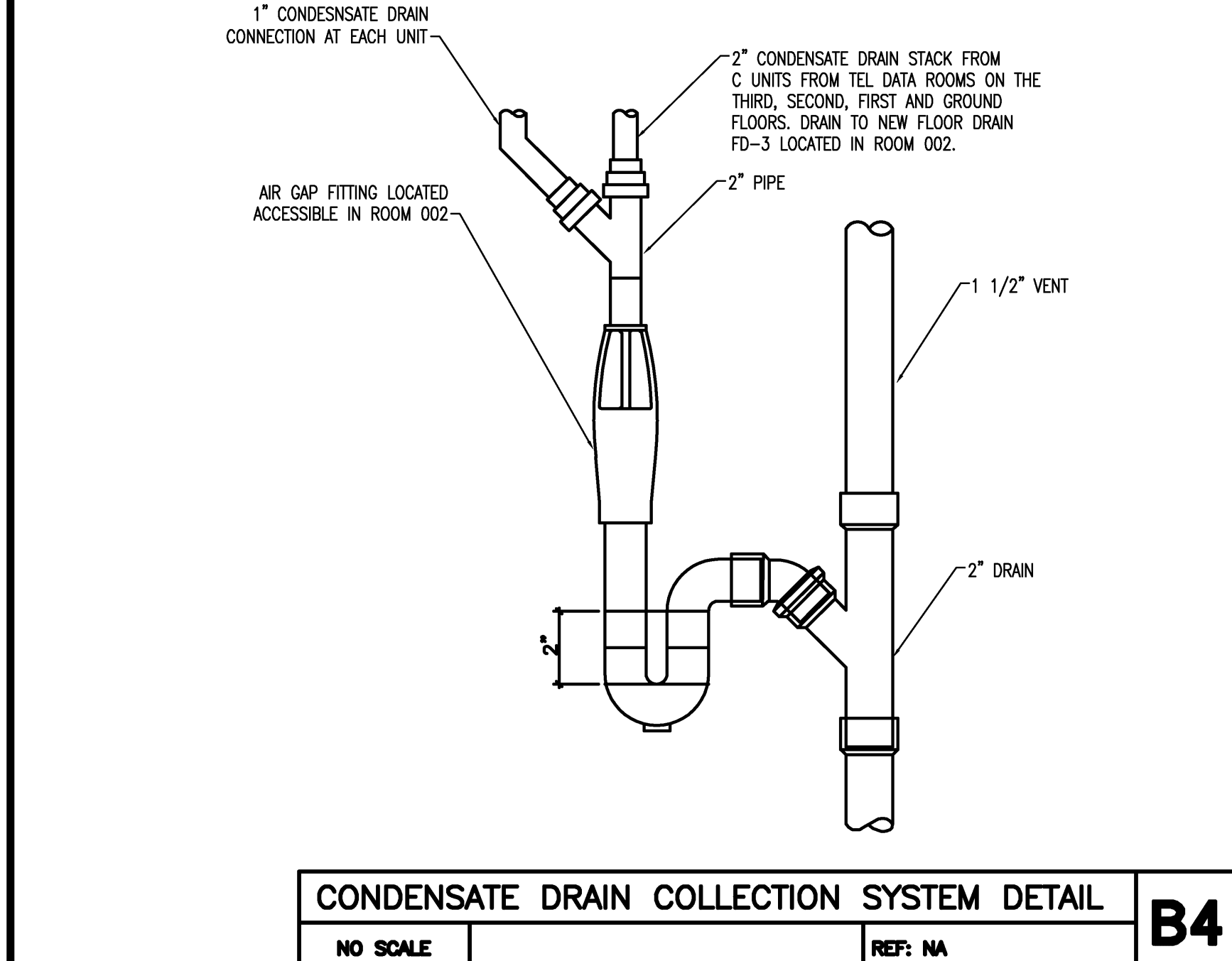
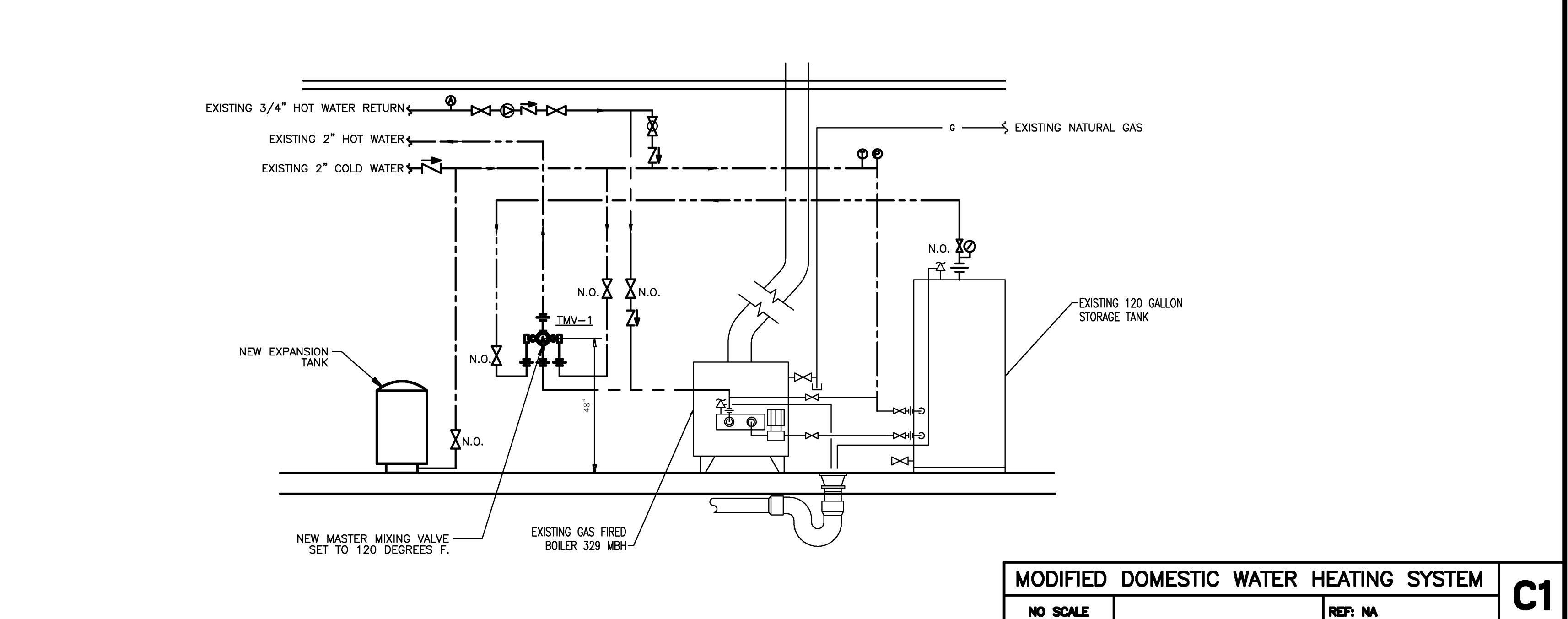
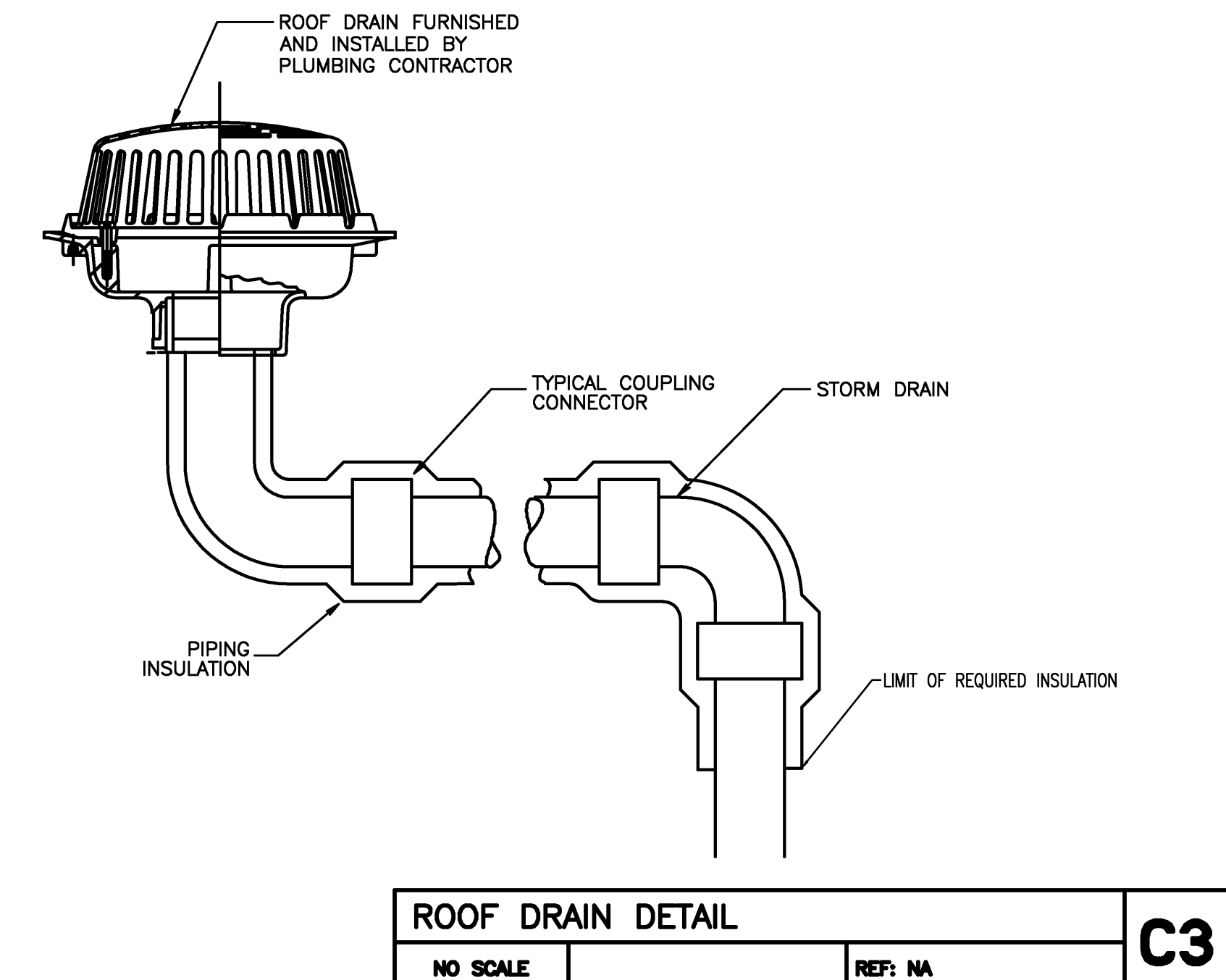
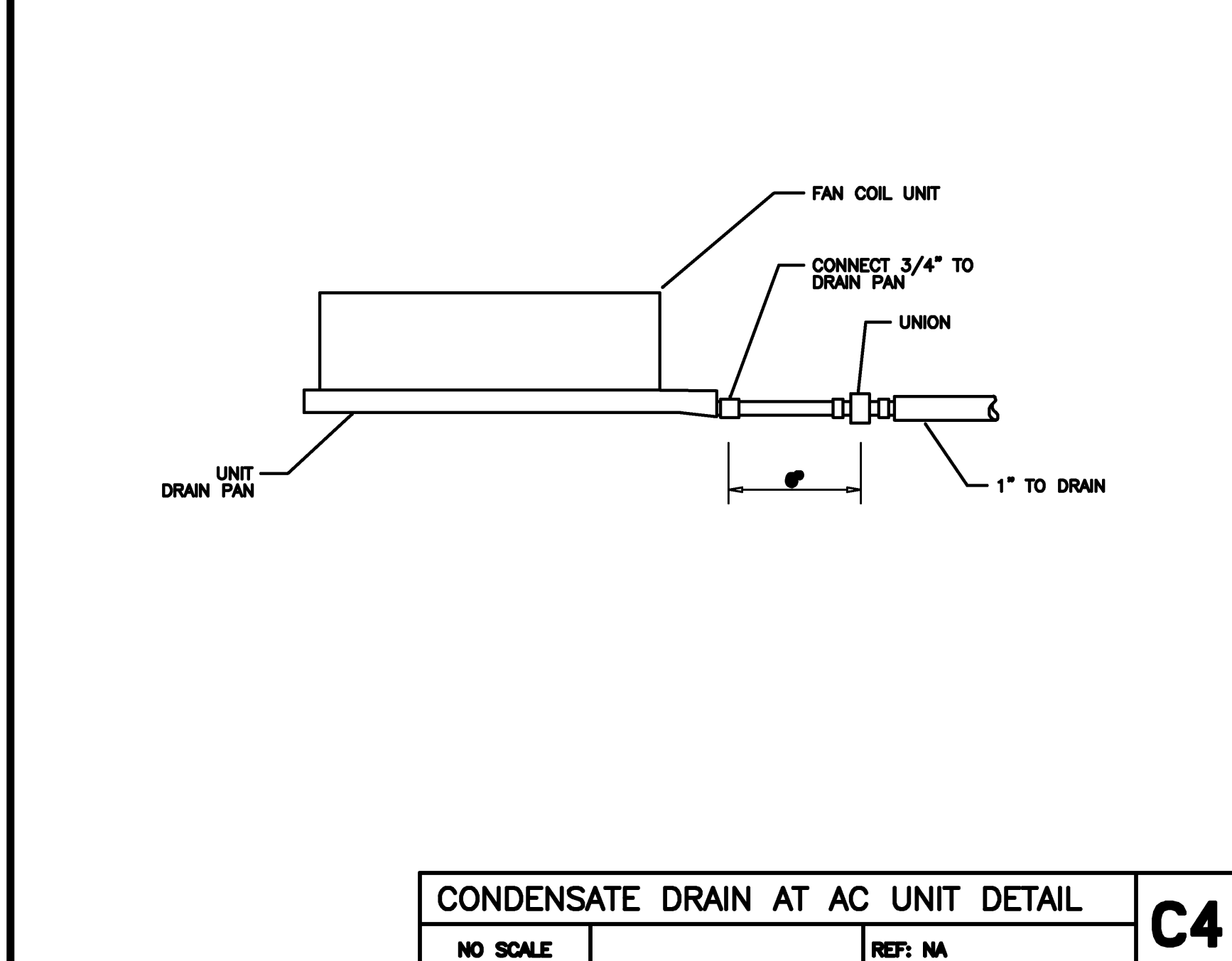
Project Title

110 FREE STREET BUILDING RENOVATIONS

PORTLAND, MAINE

HA Project No. **09146**

Key Plan



SPRINKLER LEGEND

1. DESIGN DENSITIES:
LOBBY, OFFICES, COMMON AREAS - NFPA #13, LIGHT HAZARD, 0.10 OVER 1,500 SQ. FT. REMOTE AREA AND 100 GPM HOSE STREAM.
MECHANICAL ROOM - NFPA #13, ORDINARY HAZARD GROUP 2, 0.15 OVER 1,500 SQ. FT. REMOTE AREA AND 250 GPM HOSE STREAM.

2. OFF-PREMISE SUPERVISION OF FIRE SPRINKLER SYSTEM AND PROVISION OF LOCAL WATER FLOW ALARM DEVICE PROVIDED BY FIRE ALARM CONTRACTOR.

3. ALL HORIZONTAL PIPING MAINS SHALL BE INSTALLED 6" BELOW BOTTOM OF LOWEST BEAM RUNNING PERPENDICULAR TO THE PIPING, UNO.

4. WET SYSTEM:
2" AND LARGER - MAIN PIPING, SCHEDULE 40 BLACK STEEL WITH GROOVED ENDS AND FLUSH SEAL GASKETED MECHANICAL COUPLINGS.
1 1/2" AND SMALLER - MAINS, BRANCH LINE PIPING, DROPS AND SPRIGS: SCHEDULE 40 BLACK STEEL, THREADED WITH STANDARD WEIGHT IRON SOREX PATTERN FITTINGS.

5. EXISTING SYSTEM SHALL BE INSPECTED FOR SIZE AND CONDITION OF PIPING PRIOR TO DESIGN LAYOUT OF NEW SYSTEM. EXISTING PIPING MAY BE REUSED PROVIDING PIPE SIZES MEET REQUIREMENTS OF HYDRAULIC CALCULATIONS AND ARE FREE OF CORROSION OR SOILING INSIDE THE PIPING.

6. PROVIDE EXTRA SPRINKLERS PER NFPA 13 FOR PROTECTION BELOW DUCTS, CONDUIT OR SIMILAR EXPOSED OBSTRUCTIONS OVER 48" WIDE - PROVIDE EXTRA SPRINKLERS AS REQUIRED BY NFPA 13 WHERE SPRINKLER DISCHARGE IS OBSTRUCTED. WHERE DROPS TO PIPING BELOW OBSTRUCTIONS ARE REQUIRED, DROPS SHALL BE RUN TIGHT TO OBSTRUCTION TO MINIMIZE VISUAL IMPACT.

7. SEISMIC BRACING - BRACING PROVIDED FOR ALL PIPING AS REQUIRED BY NFPA #13 USING SCHEDULE 40 PIPE.

8. THE FIRE SPRINKLER CONTRACTOR SHALL THOROUGHLY REVIEW ALL EXISTING DRAWINGS AND SPECIFICATIONS THAT IMPACT THE FIRE SPRINKLER SYSTEM PRIOR TO BID. ANY QUESTIONS THAT AFFECT THE DESIGN AND INSTALLATION OF THE FIRE SPRINKLER SYSTEM SHALL BE RESOLVED BEFORE THE CONTRACT IS AWARDED.

9. CONTRACTOR SHALL PREPARE AND SUBMIT SHOP DRAWINGS AS REQUIRED BY THE SPECIFICATIONS.

10. SPRINKLER HEAD LOCATIONS ARE SHOWN WHERE COORDINATION WITH OTHER CEILING FEATURES IS CRITICAL. THE "T" SERIES PLANS ARE NOT INTENDED TO SHOW ALL SPRINKLER HEADS. THE SPRINKLER CONTRACTOR SHALL PROVIDE FIRE PROTECTION PER NFPA 13 AND LOCAL CODES, AND PER THE AUTHORITY HAVING JURISDICTION.

● UPRIGHT BRASS
○ SEMI-RECESSED WHITE PENDANT
○ CONCEALED WHITE PENDANT
▲ WINDOW SPRINKLER

— F — SPRINKLER MAIN
— SP — STANDPIPE MAIN
— A — AUTOMATIC SPRINKLER SYSTEM PIPING

SPRINKLER GENERAL NOTES AND LEGEND
NO SCALE REF: NA A2

1. COORDINATE WORK WITH THE WORK OF ALL OTHER TRADES.

2. ALL STORM PIPING SHALL PITCH AT 1/8" PER FOOT EXCEPT AS NOTED. ABOVEGROUND STORM PIPING SHALL BE CAST IRON OR PVC.

3. ALL SANITARY PIPING SHALL PITCH AT 1/4" PER FOOT EXCEPT AS NOTED.

4. ALL UNDERSLAB DRAINAGE AND VENT PIPING SHALL START AT MINIMUM INVERT ELEVATION 18" BELOW FINISHED FLOOR UNLESS NOTED OTHERWISE.

5. ALL VENT AND WATER SUPPLY PIPING SHALL PITCH TO DRAIN.

6. ALL PIPING SHALL BE CONCEALED EXCEPT IN UNFINISHED SPACES AND WHERE NO CEILING OCCURS.

7. REFER TO PLUMBING FIXTURE INSTALLATION SCHEDULE FOR THE SIZE OF PIPING CONNECTIONS AND MOUNTING HEIGHTS OF EACH FIXTURE. MANUFACTURERS AND MODEL NUMBERS ARE SHOWN IN THE PLUMBING FIXTURE SCHEDULE. SEE PLUMBING SPECIFICATION DIVISION 22 FOR MORE DETAILED INFORMATION.

8. ALL UNDERSLAB DRAINAGE PIPING SHALL BE 4" DIAMETER UNLESS OTHERWISE NOTED.

9. REPLACE ALL EXISTING FLOOR CLEANOUTS.

— SW — NEW SANITARY PIPING ABOVE GROUND
— CSW — EXISTING SANITARY PIPING ABOVE GROUND
— SW — NEW SANITARY WASTE PIPING BELOW GROUND
— CSW — EXISTING SANITARY WASTE PIPING BELOW GROUND
— SW — NEW VENT PIPING ABOVE GROUND
— CSW — EXISTING VENT PIPING ABOVE GROUND
— SD — NEW STORM DRAINAGE PIPING ABOVE GROUND
— ESD — EXISTING STORM DRAINAGE PIPING ABOVE GROUND
— LUD — NEW UNDERDRAIN PIPING BELOW GROUND
— EUD — EXISTING UNDERDRAIN PIPING BELOW GROUND
— CW — NEW COLD WATER PIPING ABOVE GROUND
— ECW — EXISTING COLD WATER PIPING ABOVE GROUND
— HW — NEW HOT WATER PIPING ABOVE GROUND
— EHW — EXISTING HOT WATER PIPING ABOVE GROUND
— HW — NEW HOT WATER RETURN PIPING ABOVE GROUND
— EHW — EXISTING HOT WATER RETURN PIPING ABOVE GROUND
— G — NEW GAS PIPING ABOVE GROUND
— EG — EXISTING GAS PIPING ABOVE GROUND

— SH — SHUT-OFF VALVE
— CR — CHECK VALVE
— PR — PRESSURE REDUCING VALVE
— GC — GAS COCK
— BV — BALANCING VALVE
— FD — FLOOR DRAIN
— W/TP — WITH TRAP PRIMER
— FOD — FLOOR CLEANOUT
— WOC — WALL CLEANOUT
— CO — CLEANOUT
— SWR — SANITARY WASTE PIPING
— VTR — VENT THROUGH ROOF
— SW — SANITARY WASTE PIPING
— RD — ROOF DRAIN
— RL — ROOF LEADER

PLUMBING GENERAL NOTES AND LEGEND
NO SCALE REF: NA A1

02/12/2010 ISSUED FOR CONSTRUCTION

12/11/2009 DESIGN DEVELOPMENT

10/23/2009 SCHEMATIC DESIGN

Mark Date Description

Issue Dates

Drawing Status

ISSUED FOR CONSTRUCTION

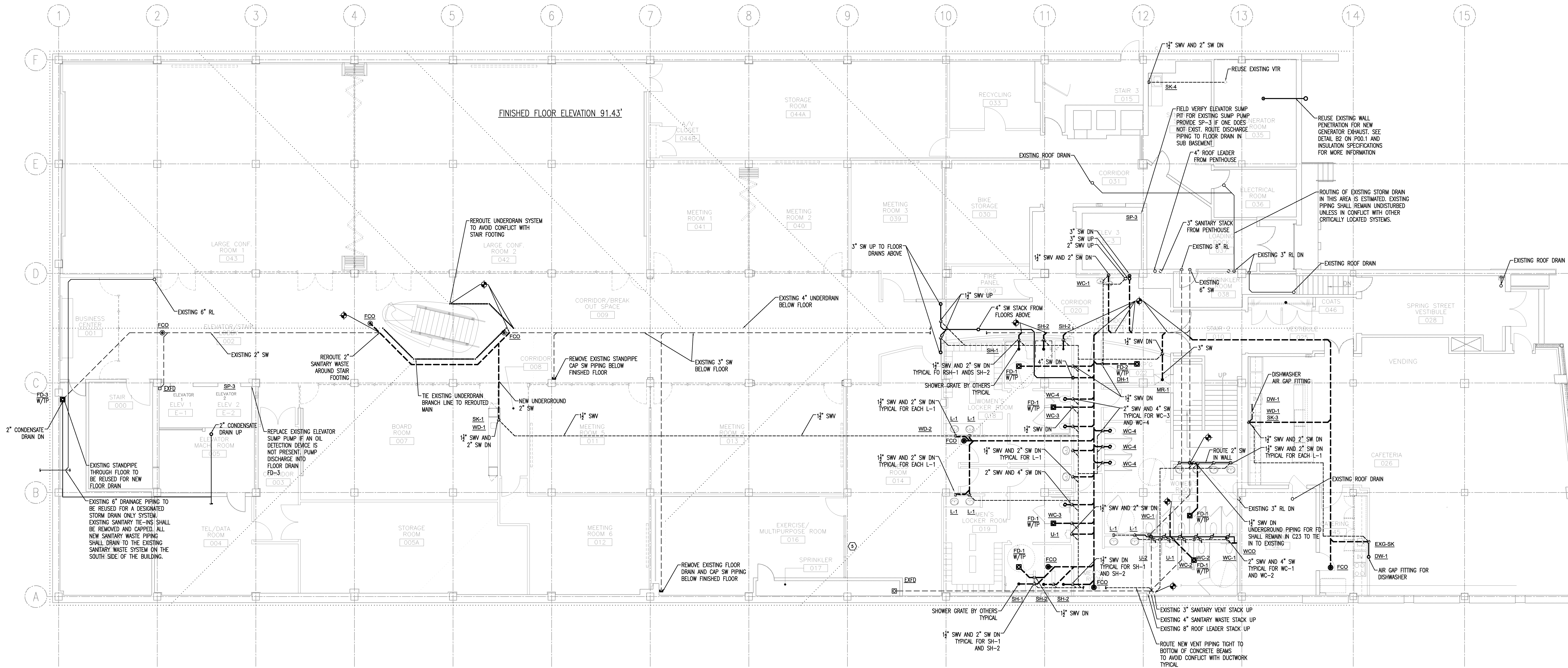
Drawing Title

PLUMBING SCHEDULES AND DETAILS

PA / PE: SPF Drawn By: SGH

Drawing Number

P00.1



Mark	Date	Description
02/12/2010	ISSUED FOR CONSTRUCTION	
12/11/2009	DESIGN DEVELOPMENT	
10/23/2009	SCHEMATIC DESIGN	
Issue Dates		

Drawing Status

ISSUED FOR CONSTRUCTION

Drawing Title

GROUND FLOOR PLAN PLUMBING DRAINAGE

PA / PE: SPF Drawn By: SGH

Drawing Number

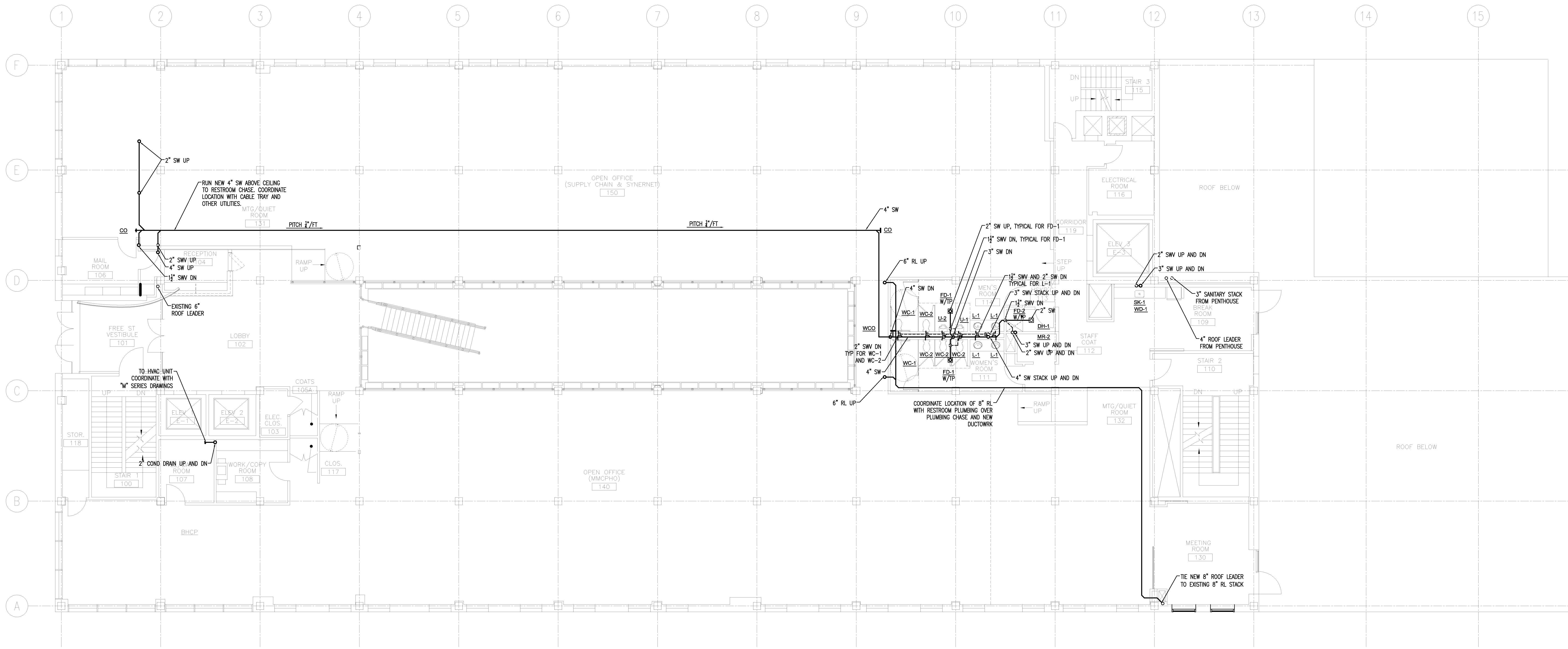
Project Title

110 FREE STREET BUILDING RENOVATIONS

PORTLAND, MAINE

HA Project No. **09146**

Key Plan



Mark	Date	Description
02/12/2010	ISSUED FOR CONSTRUCTION	
12/11/2009	DESIGN DEVELOPMENT	
10/23/2009	SCHEMATIC DESIGN	

Drawing Status

ISSUED FOR CONSTRUCTION

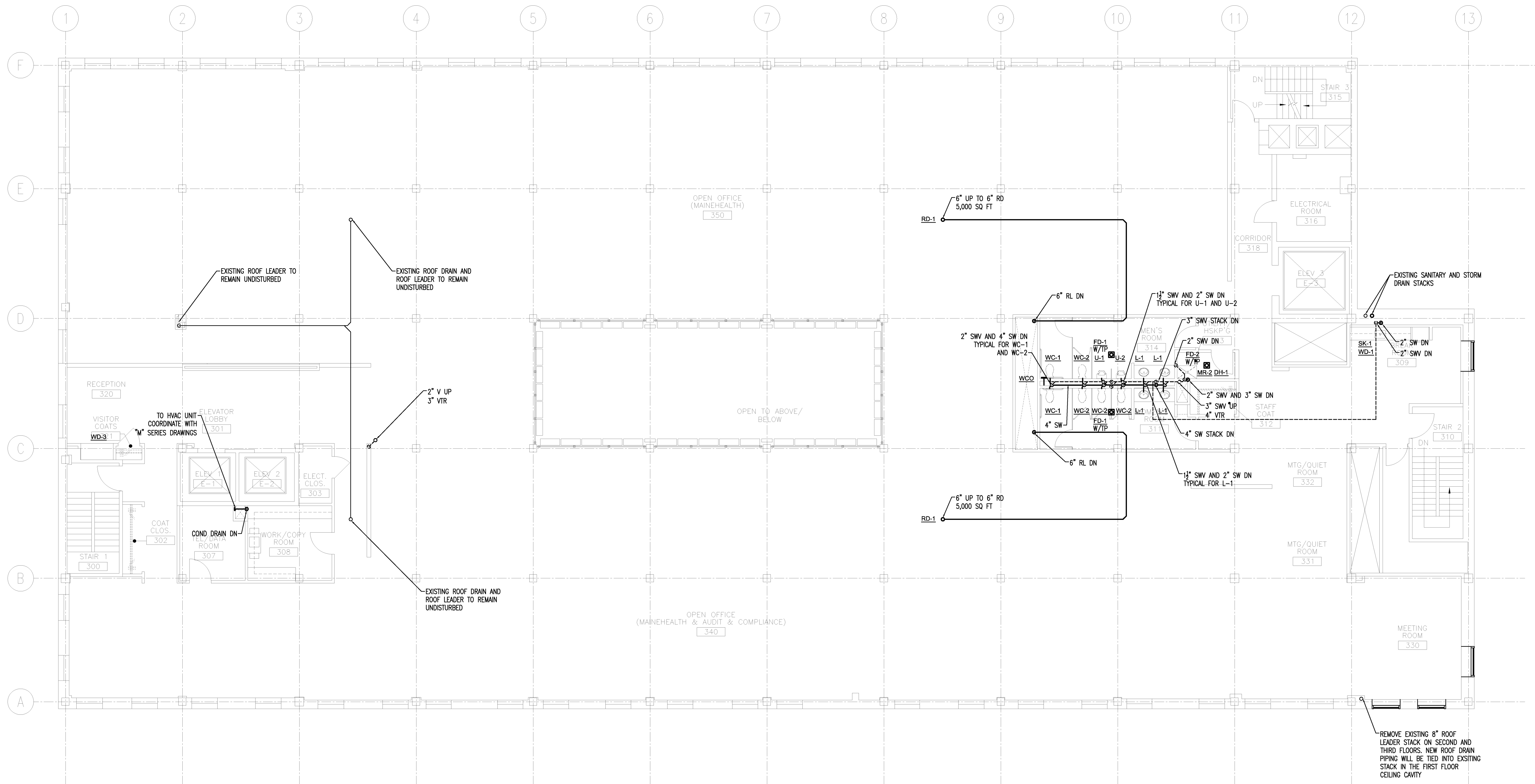
Drawing Title

FIRST FLOOR PLAN PLUMBING DRAINAGE

PA / PE: SPF Drawn By: SGH

Drawing Number

P10.1



Issue Dates	Description
02/12/2010	ISSUED FOR CONSTRUCTION
12/11/2009	DESIGN DEVELOPMENT
10/23/2009	SCHEMATIC DESIGN

Drawing Status

ISSUED FOR CONSTRUCTION

Drawing Title

THIRD FLOOR PLAN PLUMBING DRAINAGE

PA / PE: SPF Drawn By: RAINGAGE

Drawing Number

P10.3

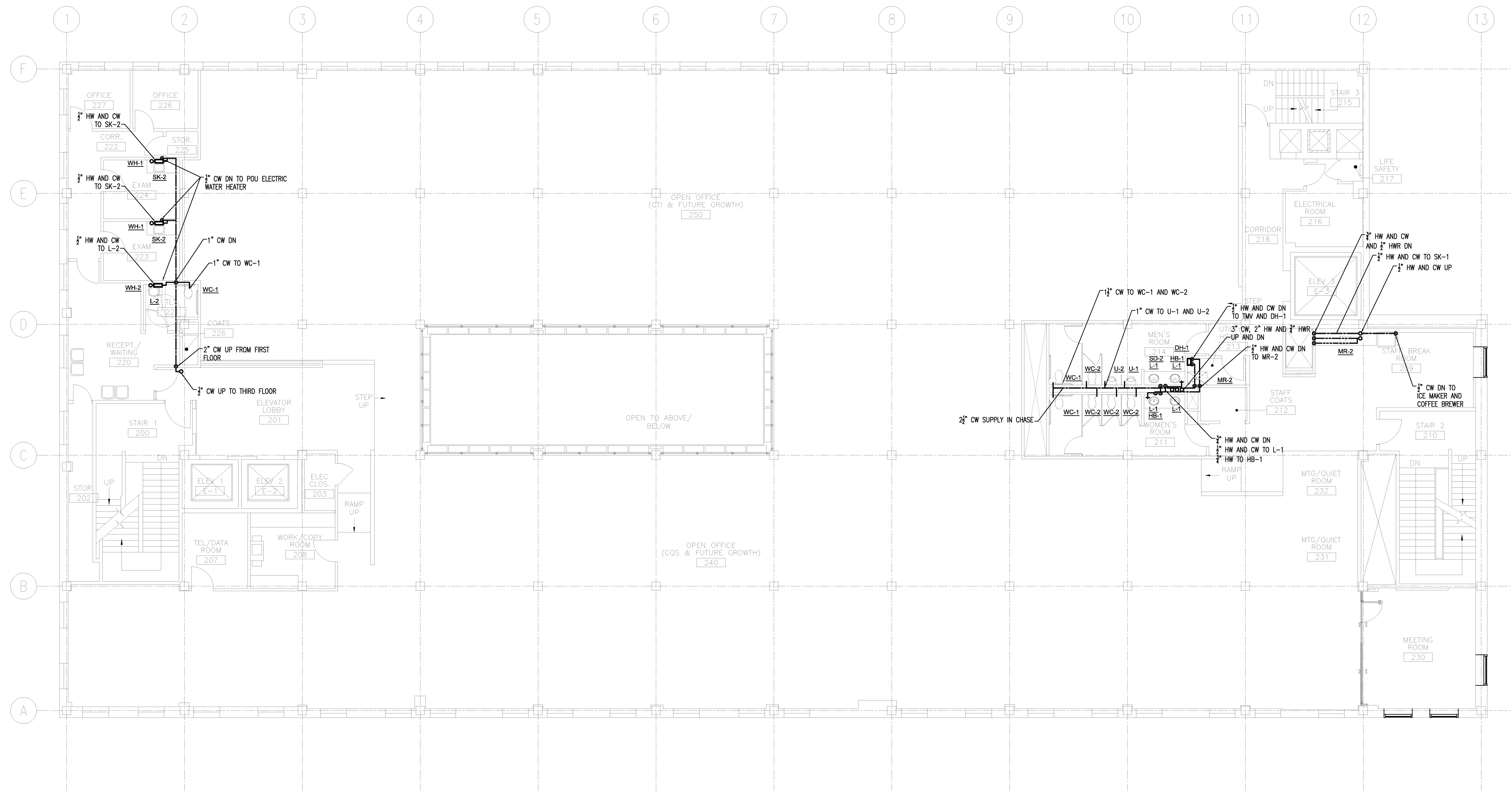
Project Title

110 FREE STREET BUILDING RENOVATIONS

PORTLAND, MAINE

HA Project No. **09146**

Key Plan



Mark	Date	Description
	02/12/2010	ISSUED FOR CONSTRUCTION
	12/11/2009	DESIGN DEVELOPMENT
	10/23/2009	SCHEMATIC DESIGN

Drawing Status

ISSUED FOR CONSTRUCTION

Drawing Title

SECOND FLOOR PLAN PLUMBING SUPPLY

PA / PE: SPF Drawn By: SGH

Drawing Number

P20.2

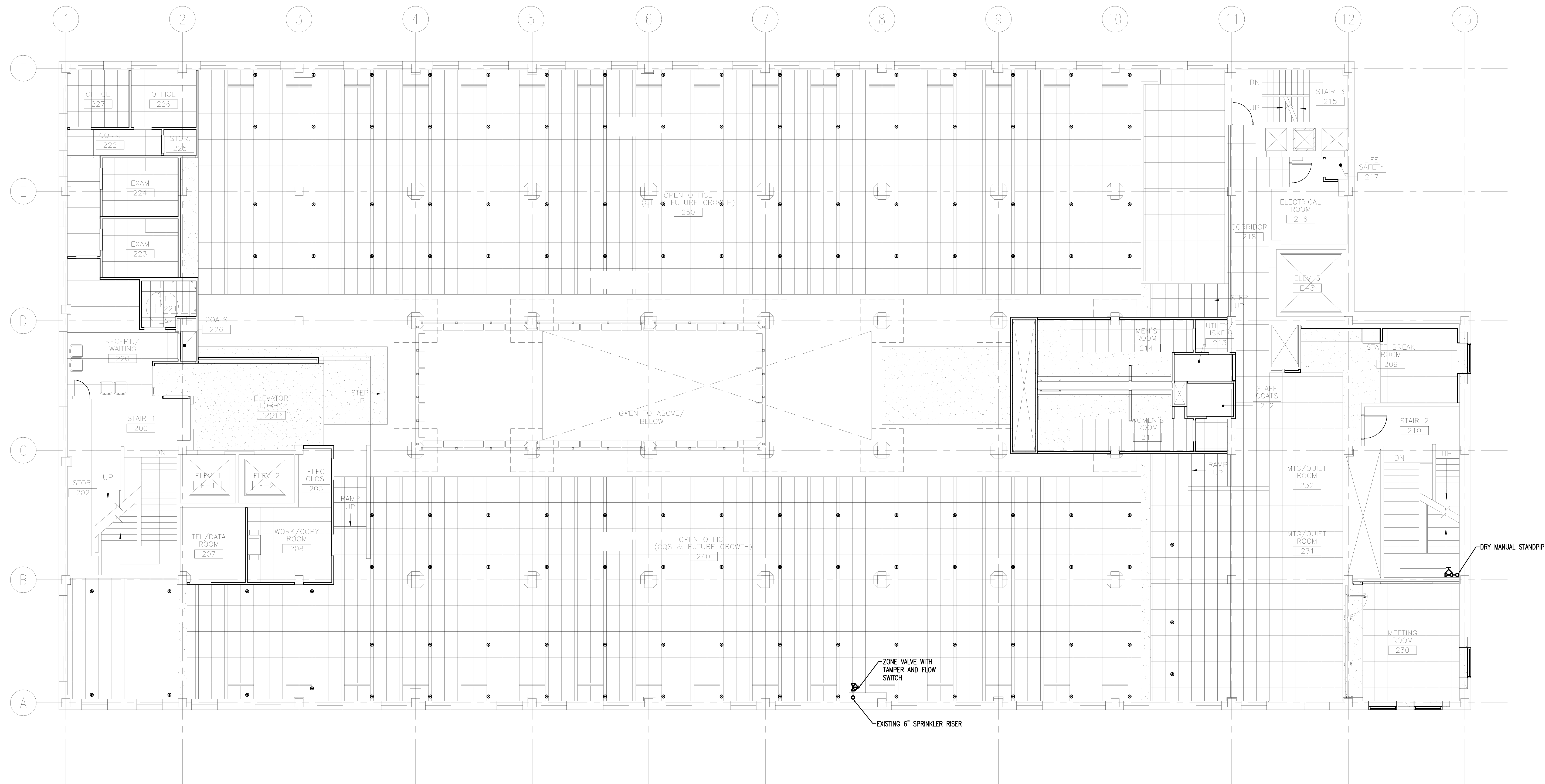
Project Title

110 FREE STREET BUILDING RENOVATIONS

PORTLAND, MAINE

HA Project No. **09146**

Key Plan



Mark	Date	Description
02/12/2010	ISSUED FOR CONSTRUCTION	
12/11/2009	DESIGN DEVELOPMENT	
10/23/2009	SCHEMATIC DESIGN	

Drawing Status

ISSUED FOR CONSTRUCTION

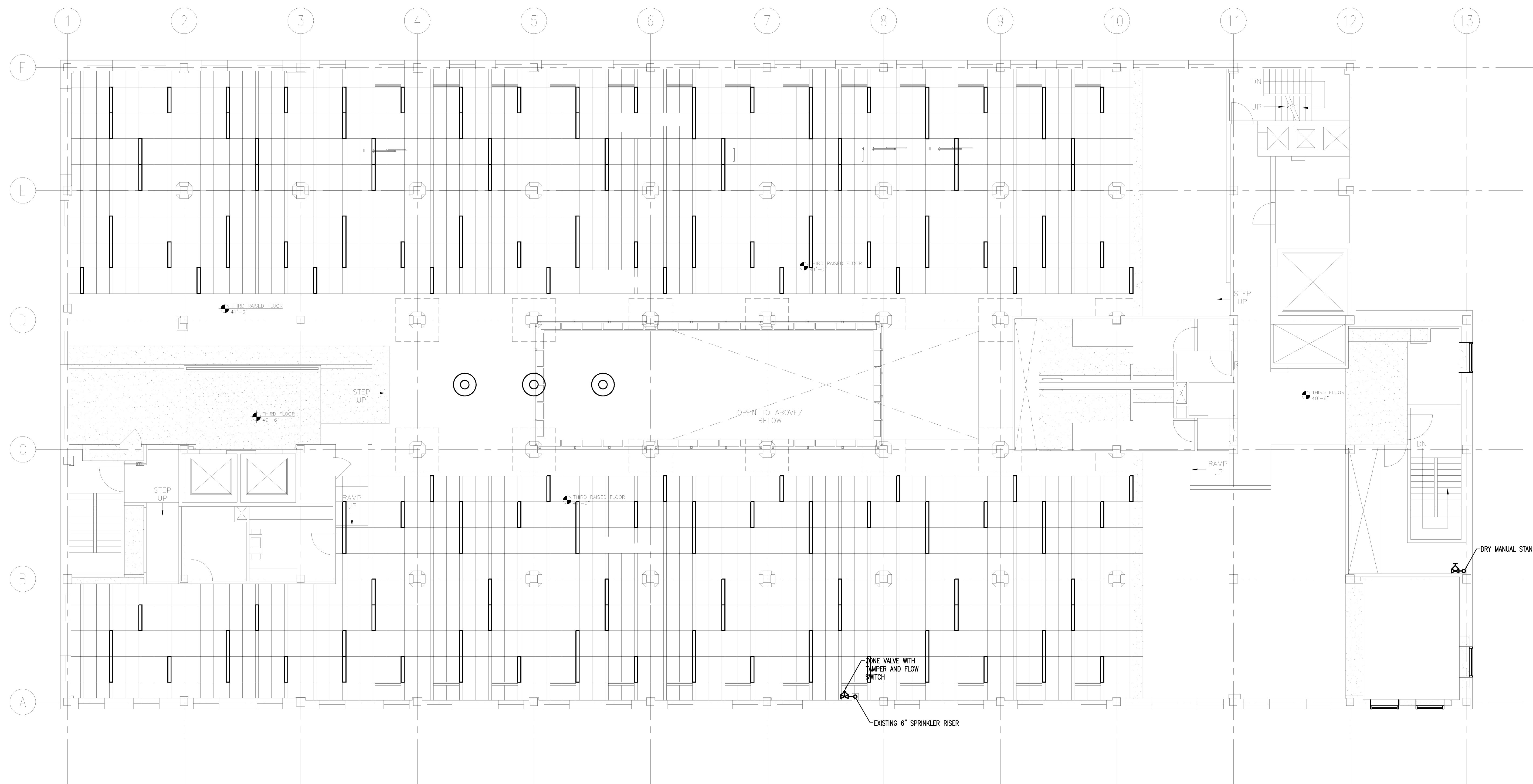
Drawing Title

SECOND FLOOR PLAN FIRE PROTECTION

PA / PE: SPF Drawn By: SGH

Drawing Number

F10.2



SPRINKLER HEADS WILL BE SHOWN ON THIRD FLOOR UNDER ADDENDUM #1 ISSUED AT A LATER DATE.

Mark	Date	Description
02/12/2010	ISSUED FOR CONSTRUCTION	
12/11/2009	DESIGN DEVELOPMENT	
10/23/2009	SCHEMATIC DESIGN	

Drawing Status

ISSUED FOR CONSTRUCTION

Drawing Title

**THIRD FLOOR PLAN
FIRE PROTECTION**

PA / PE: SPF Drawn By: SGH

Drawing Number

F10.3