

LIGHTING SCHEDULE:

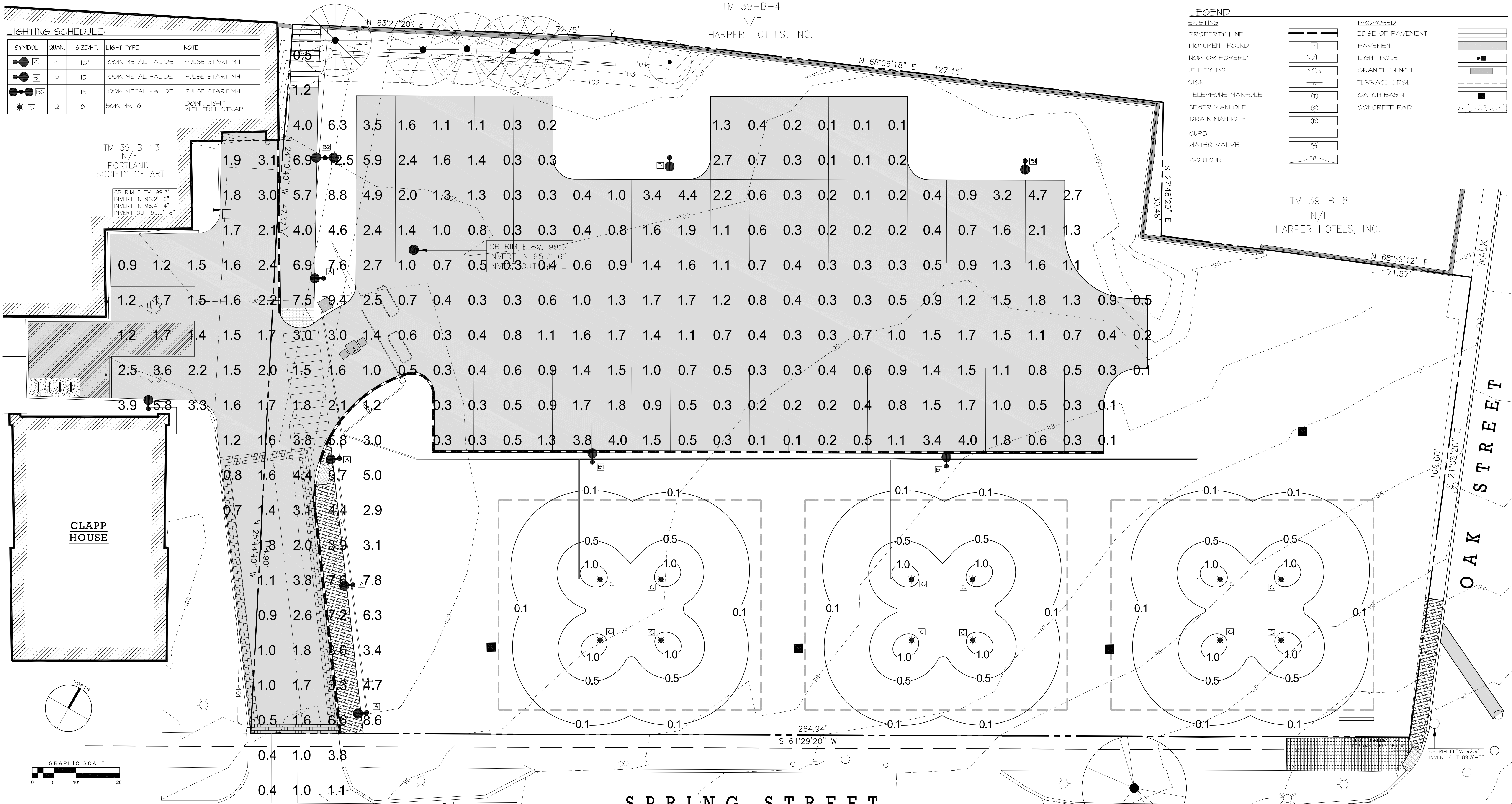
SYMBOL	QUAN.	SIZE/HT.	LIGHT TYPE	NOTE
⊙	4	10'	100W METAL HALIDE	PULSE START MH
⊙	5	15'	100W METAL HALIDE	PULSE START MH
⊙	1	15'	100W METAL HALIDE	PULSE START MH
★	12	8'	50W MR-16	DOWN LIGHT WITH TREE STRAP

TM 39-B-4
N/F
HARPER HOTELS, INC.

EXISTING	PROPOSED
PROPERTY LINE	EDGE OF PAVEMENT
MONUMENT FOUND	PAVEMENT
NOW OR FOREVERLY	LIGHT POLE
UTILITY POLE	GRANITE BENCH
SIGN	TERRACE EDGE
TELEPHONE MANHOLE	CATCH BASIN
SEWER MANHOLE	CONCRETE PAD
DRAIN MANHOLE	
CURB	
WATER VALVE	
CONTOUR	

TM 39-B-13
N/F
PORTLAND SOCIETY OF ART

TM 39-B-8
N/F
HARPER HOTELS, INC.



Symbol	Label	Qty	Arrangement	Description	Lumens	LLF	Filename
⊙	A	4	SINGLE	DL1-P10-H3-F	9000	0.720	DL1-P10-H3-F.IES
⊙	B1	5	SINGLE	DL1-P10-H4-F	9000	0.720	DL1-P10-H4-F.IES
⊙	B2	1	BACK-BACK	DL1-P10-H4-F	9000	0.720	DL1-P10-H4-F.IES
★	C	12	SINGLE	B-K 'POWER PIPE'			

PARKING LOT and WALKWAY LIGHTING Calculation Summary							
Label	Avg	Max	Min	Avg/Min	Max/Min	PtSpclr	PtSpctb
CalcPts	1.73	12.5	0.1	17.30	125.00	8	8
PARKING AREA	1.03	5.9	0.1	10.30	59.00		

MOHR & SEREDIN
Landscape Architects, Inc.
18 Pleasant Street, Portland, Maine 04101
ph: 1.207.871.0003
fax: 1.207.871.1419

LIGHTING PHOTOMETRICS NOTES:
1. THE PARKING LOT LIGHTING DESIGN IS BASED ON LIMITED INFORMATION SUPPLIED BY HUBBELL LIGHTING. SITE DETAILS PROVIDED HEREON ARE REPRODUCED ONLY AS A VISUALIZATION AID. FIELD DEVIATIONS MAY SIGNIFICANTLY AFFECT PREDICTED PERFORMANCE. PRIOR TO INSTALLATION, CRITICAL SITE INFORMATION (POLE LOCATIONS, ORIENTATION, MOUNTING HEIGHT, ETC.) SHOULD BE COORDINATED WITH THE CONTRACTOR AND/OR SPECIFIER RESPONSIBLE FOR THE PROJECT.
2. PARKING LOT LUMINAIRE DATA IS TESTED TO INDUSTRY STANDARDS UNDER LABORATORY CONDITIONS. OPERATING VOLTAGE AND NORMAL MANUFACTURING TOLERANCES OF LAMP, BALLAST, AND LUMINAIRE MAY AFFECT FIELD RESULTS.
3. TREE LIGHTING PHOTOMETRIC DATA TAKEN FROM TECHNICAL ADVISORY NO. 2006-02 -- MR-16 LAMP PHOTOMETRICS, DATED JANUARY 3, 2006, PROVIDED BY B-K LIGHTING, MADERA, CALIFORNIA, 93638.

PMA Spring Street Parking and Garden
87 SPRING STREET PORTLAND, MAINE 04101

Portland Museum of Art
PORTLAND, MAINE

No.	Date	Revision
1	7 May 2008	Per City Staff Review
2	15 May 2008	Per City Staff Review

Title:
Lighting Photometrics Plan

Job No.: 688
Date: 28 March 2008
Scale: 1"=10'
Drawn: MK
Checked: SM

Dwg. No.
L2.1

