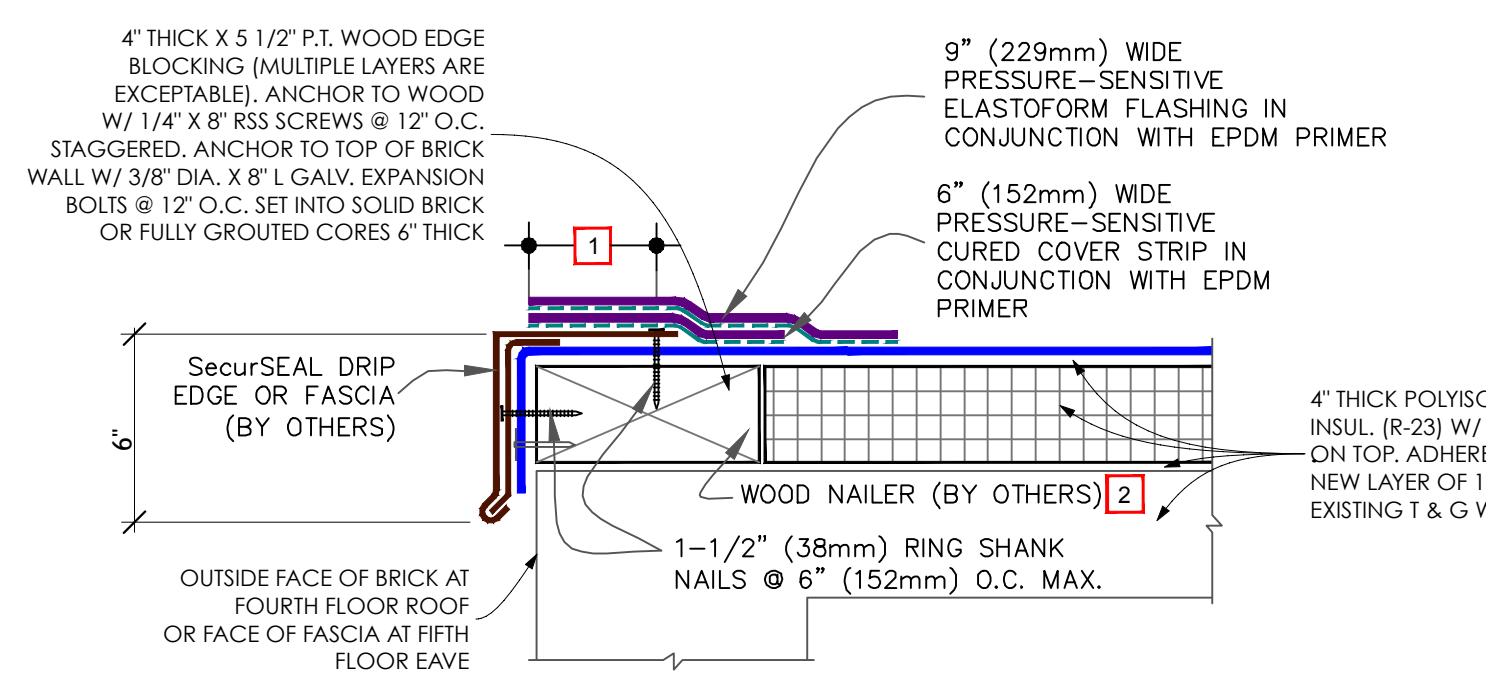
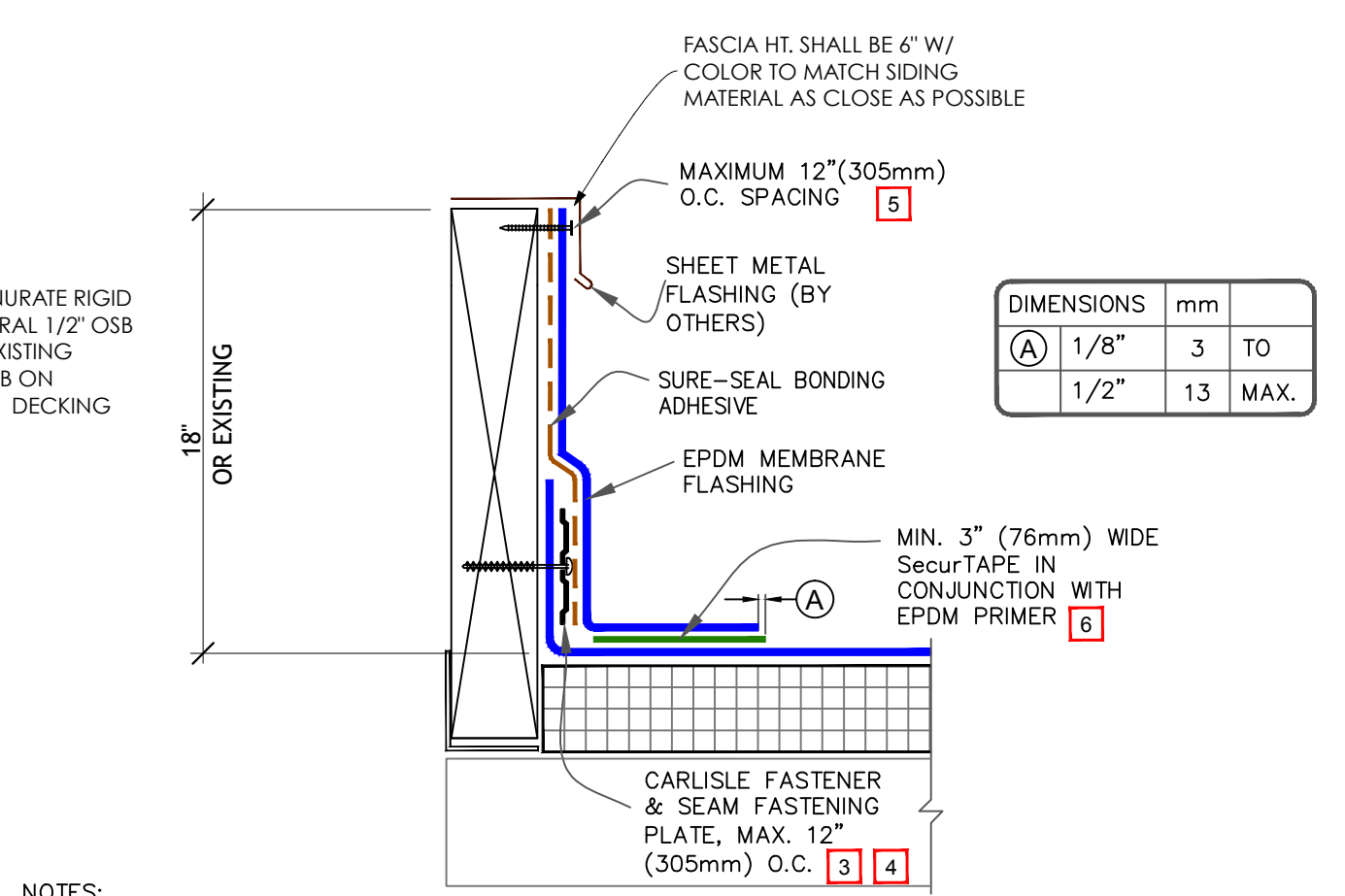


1 Roof Deck-Proposed
SCALE: 1/4" = 1'-0"
0 2 4 8



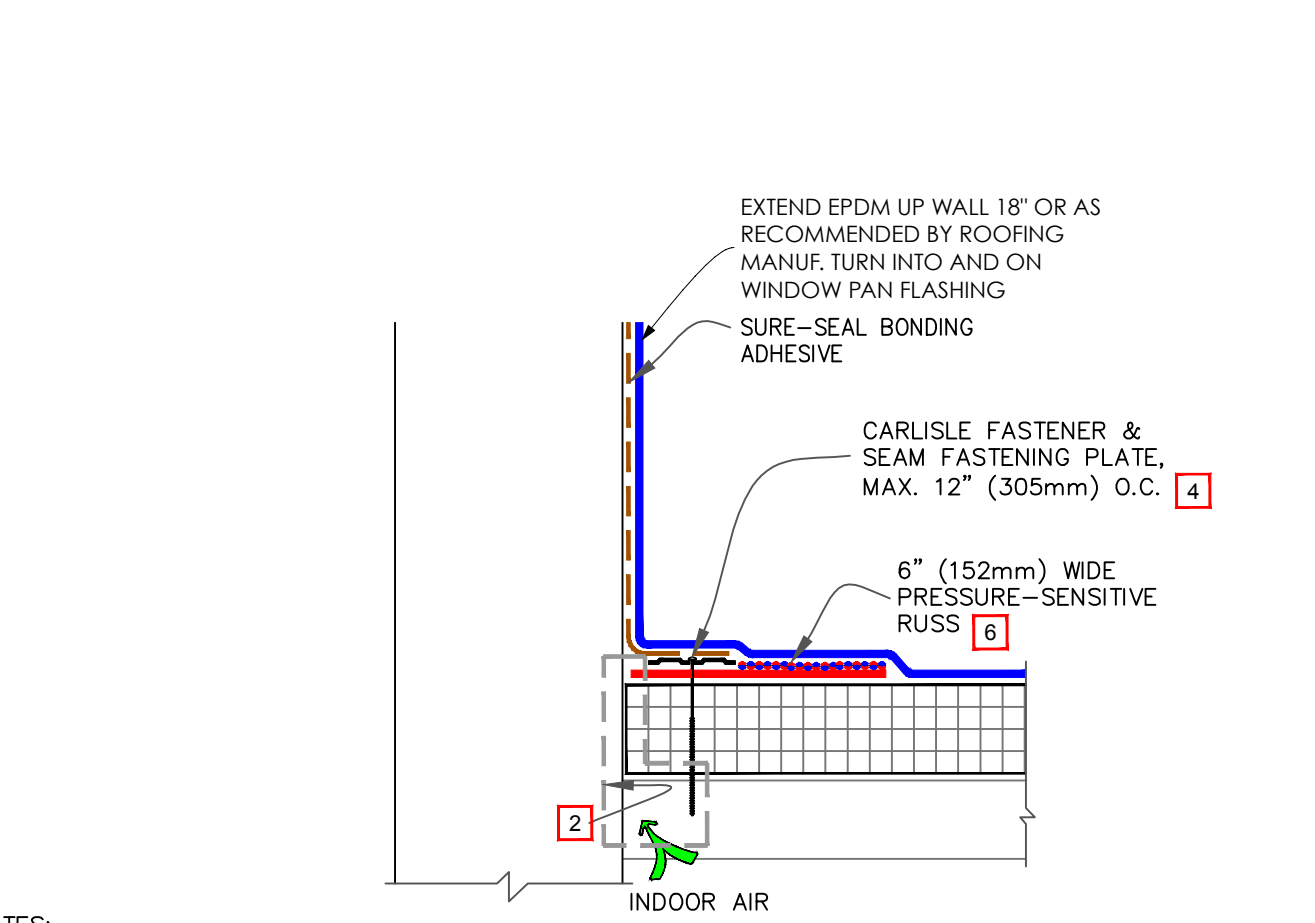
- NOTES:
- DECK FLANGE MUST BE TOTALLY COVERED BY PRESSURE-SENSITIVE CURED COVER STRIP WITH MINIMUM 2" (51mm) COVERAGE PAST NAIL HEADS.
 - WOOD NAILER MUST EXTEND PAST TOTAL WIDTH OF METAL EDGE.
 - TO REMOVE FINISHING OILS, SCRUB METAL FLANGE WITH WEATHERED MEMBRANE CLEANER; ALLOW TO DRY PRIOR TO APPLYING PRIMER.
 - LAP SEALANT MUST BE APPLIED AT FLASHING OVERLAPS AND INTERSECTIONS WITH JOINTS IN METAL EDGING.
 - ALL SPLICE INTERSECTIONS MUST BE OVERLAID WITH PRESSURE-SENSITIVE T-JOINT COVERS AND SEALED WITH CONTINUOUS LAP SEALANT. PRIOR TO DOING SO, APPLY LAP SEALANT ALONG THE LEADING EDGE OF THE MEMBRANE SPLICE (UNDER THE 6"x6" T-JOINT COVER) COVERING THE EXPOSED SPLICE TAPE 2" (51mm) IN ALL DIRECTIONS FROM THE SPLICE INTERSECTION.
 - REFER TO APPLICABLE CARLISLE METAL EDGING INSTRUCTION MANUAL FOR STEP-BY-STEP INSTALLATION PROCEDURES.
 - DETAIL NOT FOR USE WITH DESIGN "B" (BALLASTED STONE ASSEMBLY).

3 FOURTH & FIFTH FLOOR FASCIA
SCALE: 1" = 1'-0"



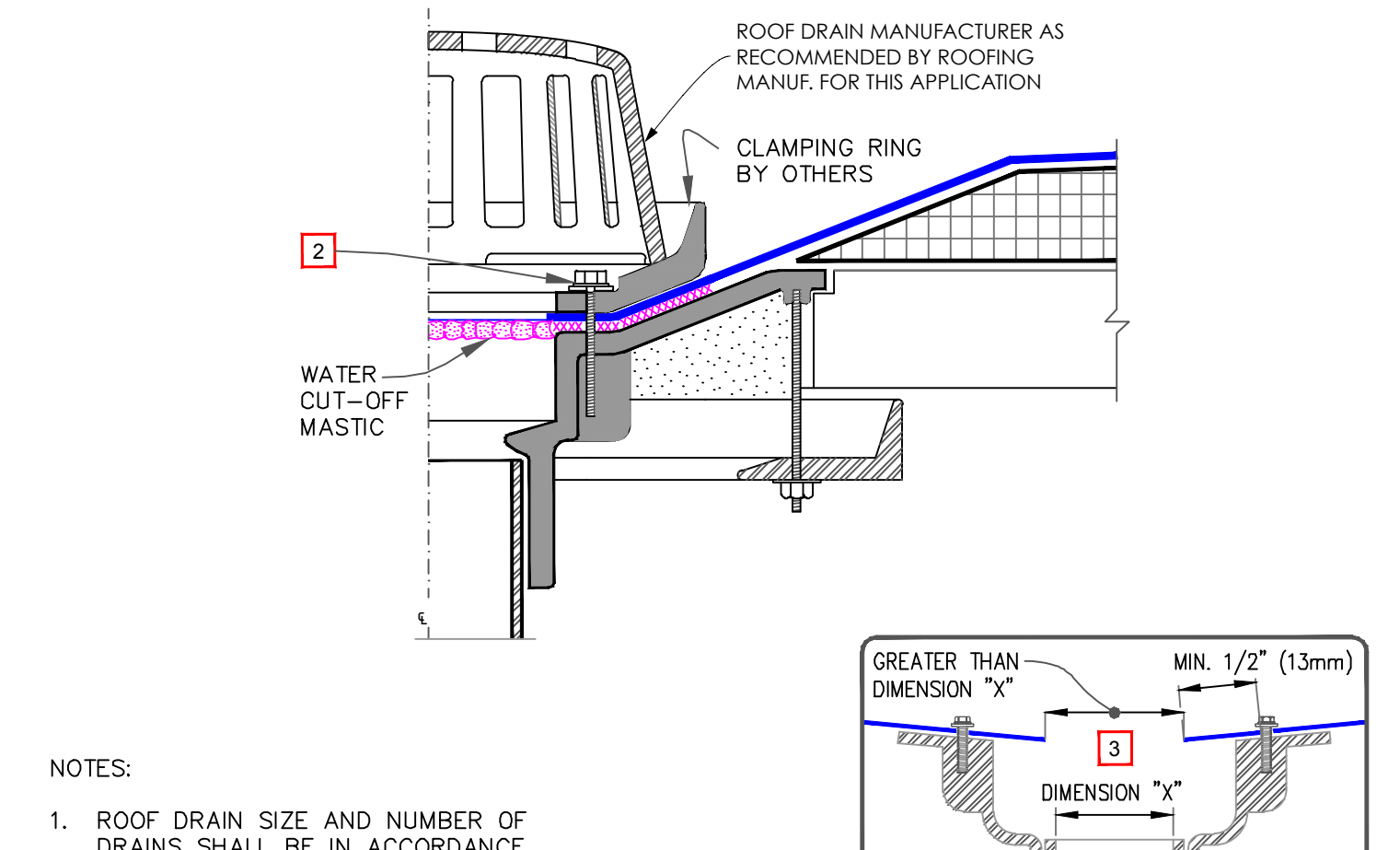
- NOTES:
- IF THE VERTICAL SPLICE ON THE CURB FLASHING IS NOT LOCATED AT THE CORNER, 6" (152mm) WIDE PRESSURE-SENSITIVE ELASTOFORM OR T-JOINT FLASHING, IN CONJUNCTION WITH EPDM PRIMER, MUST BE CENTERED OVER FIELD SPLICE AT ANGLE CHANGE.
 - LAP SEALANT IS REQUIRED ON CUT-EDGES OF REINFORCED MEMBRANE.
 - SEAM FASTENING PLATES/FASTENERS MAY BE INSTALLED INTO THE STRUCTURAL DECK.
 - WHEN SEAM FASTENING PLATES/FASTENERS ARE INSTALLED HORIZONTALLY, HP FASTENERS AND POLYMER SEAM PLATES ARE REQUIRED FOR MECHANICALLY-FASTENED ROOFING SYSTEMS OVER STEEL DECKS.
 - WHEN MECHANICAL FASTENERS ARE USED TO PENETRATE THE METAL COUNTER-FLASHING, USE EPDM WASHERS, APPLY WATER CUT-OFF MASTIC UNDER THE COUNTER-FLASHING OR CAULK THE FASTENER HEADS.
 - MEMBRANE SPLICES SHALL INCORPORATE 6" (152mm) WIDE FIELD APPLIED SecurTAPE FOR PROJECTS WITH 20, 25 AND 30-YEAR WARRANTIES.

4 CURB DETAIL
SCALE: 1" = 1'-0"



- NOTES:
- FOR CORNERS AND RUSS APPLICATION REFER TO [DETAILS U-15A OR U-15B](#).
 - REFER TO SPECIAL CONDITION [SPEC. SUPPLEMENTS G-01-11 OR G-08-11](#).
2.1. TO BLOCK INDOOR AIR INFILTRATION AND HUMIDITY AT THE JUNCTION (G-01-11).
2.2. WHERE ROOF SYSTEM IS DESIGNED WITH A VAPOR RETARDER (G-08-11).
 - 6" (152mm) WIDE PRESSURE-SENSITIVE ELASTOFORM FLASHING, IN CONJUNCTION WITH EPDM PRIMER, MAY ALSO BE CENTERED OVER FIELD SPLICE AT ANGLE CHANGE.
 - ON MECHANICALLY-FASTENED ROOFING SYSTEMS, HP FASTENERS AND POLYMER SEAM PLATES ARE REQUIRED OVER STEEL DECKS.
 - PROJECTS WITH 25 AND 30-YEAR WARRANTIES OR WHEN USING 90-MIL MEMBRANE, ALL VERTICAL SPLICES AT THE BASE OF A WALL AND SPLICE INTERSECTIONS MUST BE OVERLAID WITH TWO LAYERS OF PRESSURE-SENSITIVE ELASTOFORM FLASHING. THE BOTTOM LAYER SHALL BE 6" (152mm) WIDE COVERED WITH A 12" (305mm) WIDE PRESSURE-SENSITIVE ELASTOFORM FLASHING PIECE. BOTH LAYERS SHALL BE CENTERED AND SEALED WITH CONTINUOUS LAP SEALANT. REFER TO [DETAIL U-2C](#).
 - EPDM PRIMER MUST BE APPLIED TO BACK SIDE OF DECK MEMBRANE PRIOR TO COMPLETING SPLICE TO PRESSURE-SENSITIVE RUSS.

5 DETAIL @ ROOF TO WALL CONNECTION
SCALE: 1" = 1'-0"



- NOTES:
- ROOF DRAIN SIZE AND NUMBER OF DRAINS SHALL BE IN ACCORDANCE WITH THE LOCAL CODES.
 - ALL BOLTS OR CLAMPS MUST BE IN PLACE TO PROVIDE CONSTANT COMPRESSION ON WATER CUT-OFF MASTIC.
 - THE HOLE IN THE MEMBRANE SHALL EXCEED THE DIAMETER OF THE DRAIN PIPE, BUT SHALL BE NO LESS THAN 1/2" (13mm) FROM THE ATTACHMENT POINTS OF THE DRAIN CLAMPING RING.
 - REMOVE EXISTING LEAD, FLASHING MATERIAL & ENSURE THE DRAIN RING IS COMPLETELY CLEAN DOWN TO BARE METAL.
 - FIELD SPLICES MUST BE LOCATED AT LEAST 6" (152mm) OUTSIDE THE DRAIN SUMP.
 - INSULATION TAPER SHALL NOT BE GREATER THAN 6" (152mm) IN 12" (305mm) HORIZONTAL.

6 ROOF DRAIN DETAIL
SCALE: 1" = 1'-0"

