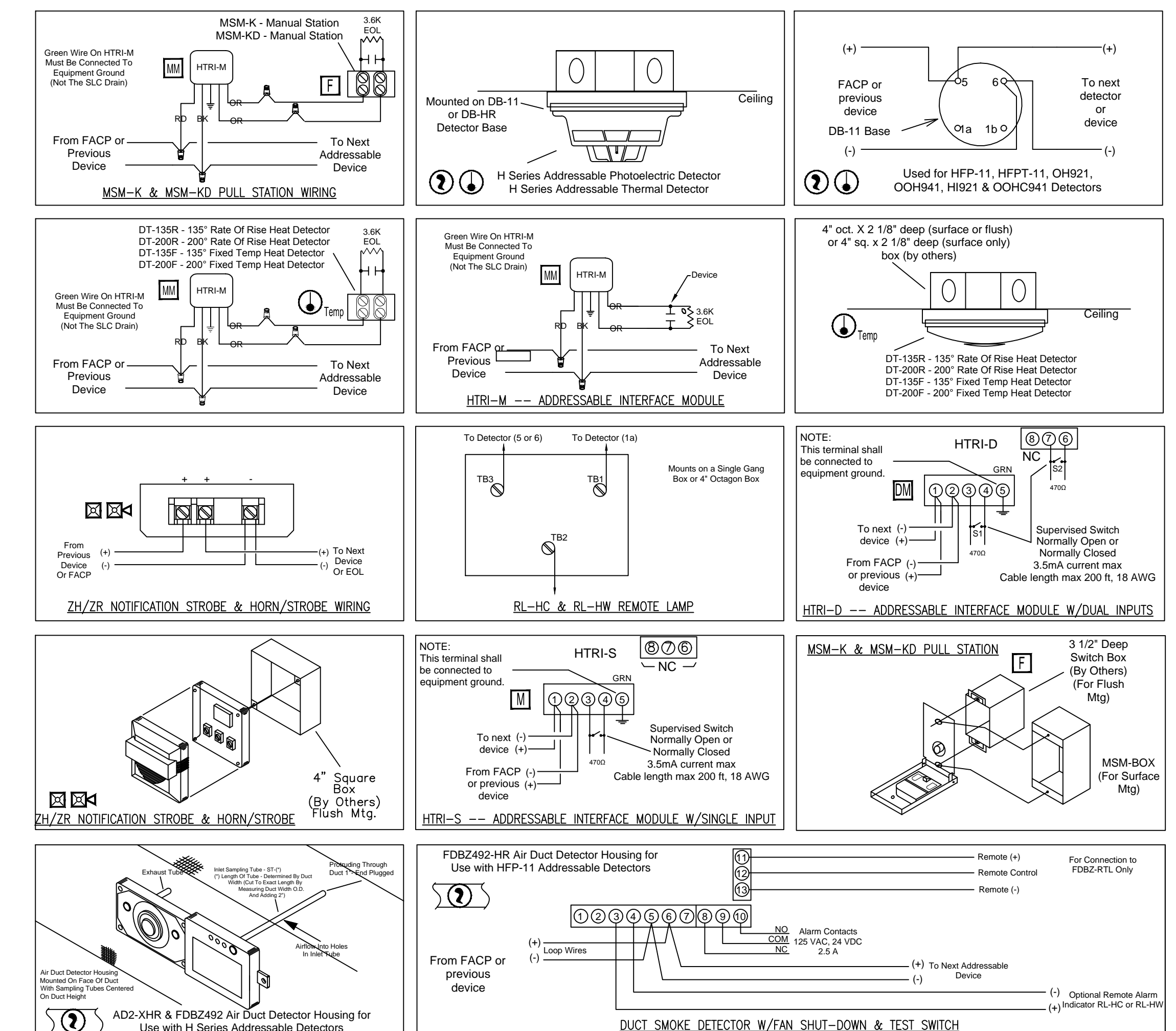
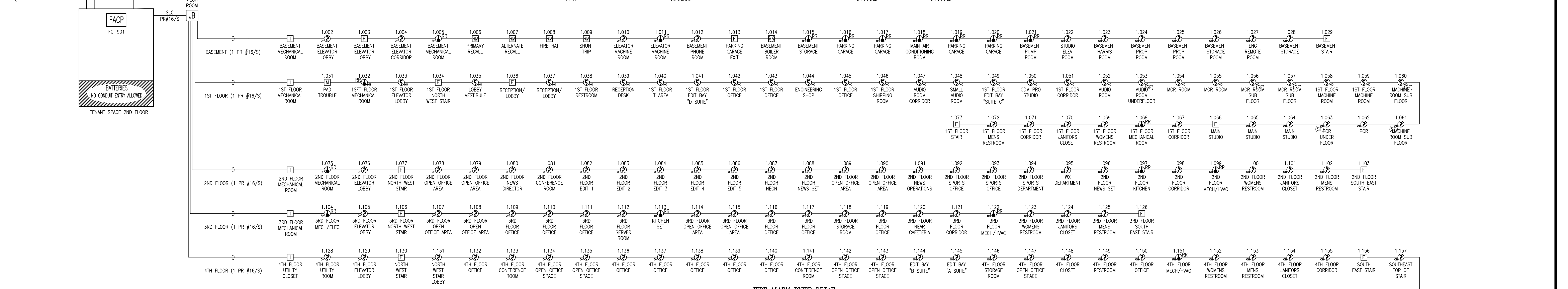
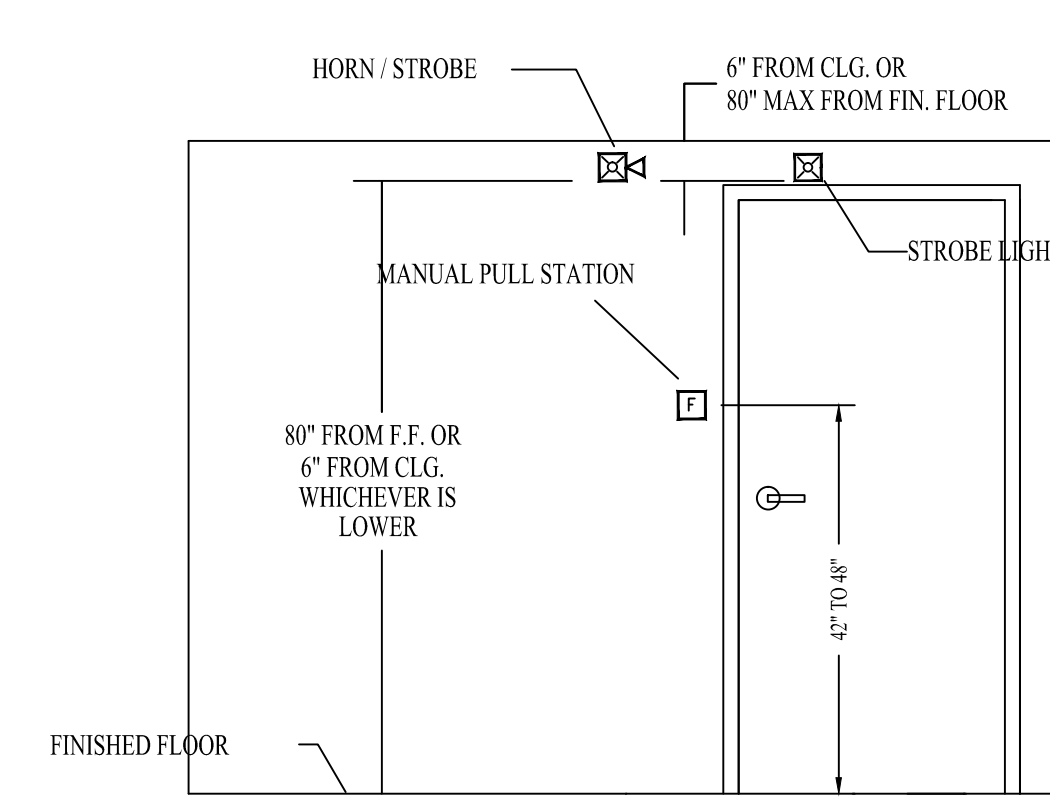


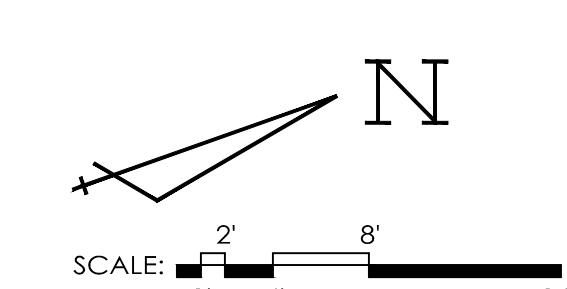
SYMBOL LEGEND			
ITEM NO.	SYMBOL	QTY. TOTAL	DESCRIPTION
1	○	135	STANDARD BASE (DB-11) - OCTAGON BOX
2	⊕	1	HEAT DETECTOR - CONVENTIONAL (DT-200F) - HTRI-M/OCTAGON BOX
3	⊕	1	HEAT DETECTOR (H921) - DB-11/OCTAGON BOX
4	⊕	17	HEAT DETECTOR (H921) - DB-11/OCTAGON BOX
5	□	5	LINE ISOLATOR (HUM) - 4" SQUARE
6	M	1	MONITOR MODULE (HTRI-S) - 4" SQUARE
7	MM	1	MINI MONITOR MODULE (HTRI-M)
8	F	13	PULL STATION (MSM-KD/HTRI-M) - SINGLE GANG
9	EM	4	INPUT/OUTPUT MODULE (HTRI-R) - 4" SQUARE
10	SD	9	DUCT DETECTOR HOUSING (FDBZ492-HR)
11	SD	9	DUCT DETECTOR (HFP-11) - FDBZ492-HR
12	SD	116	SMOKE DETECTOR (OH921) - DB-11/OCTAGON BOX
13	HS	3	HORN/STROBE (ZH-MC-R) - 4" SQUARE OR SINGLE GANG
14	HS	13	HORN/STROBE (ZH-MC-R) - 4" SQUARE OR SINGLE GANG
15	HS	3	HORN/STROBE (ZH-MC-R) - 4" SQUARE OR SINGLE GANG
16	HS	7	HORN/STROBE (ZH-MC-R) - 4" SQUARE OR SINGLE GANG
17	HS	1	STROBE (ZR-MC-R) - 4" SQUARE OR SINGLE GANG
18	HS	17	STROBE (ZR-MC-R) - 4" SQUARE OR SINGLE GANG
19	HS	3	STROBE (ZR-MC-R) - 4" SQUARE OR SINGLE GANG
20	HS	1	STROBE (ZR-MC-R) - 4" SQUARE OR SINGLE GANG
21	ANN	1	ANNUNCIATOR (FT-2015)
22	FACP	1	FIRE ALARM CONTROL PANEL (FC922)
23	PAD	1	PAD PANEL (PAD-4)



FC 924 Battery Calculations			
Qty	Module/Device	Standby Current (A)	Alarm Current (A)
1	Standard Operating Unit	0.12500	0.12500
1	252 Point Periphery Board	0.11500	0.11500
1	NAC Expander	0.02500	0.02500
1	RS-485 Module	0.05500	0.05500
1	Remote Annunciator	0.03400	0.03400
1	D-FACT Module	0.02500	0.02500
122	OH921 Smoke Detector	0.03416	0.09416
11	OOH941 Smoke Detector	0.00748	0.00748
18	H921 Heat Detector	0.00504	0.00504
3	FDCIO422 I/O Module	0.00300	0.00300
15	MSM-KD Manual Station	0.02100	0.02100
4	HTRI Input Module	0.00560	0.00560
1	HCP Control Point Module	0.00140	0.00140
	NAC Load	0.00000	1.54600
	Total Current	0.45668	2.06268
	Standby Time (24 Hours)	10.96032	0.1712044
	Alarm Time (5 Minutes)		1.1315244
	Batteries Required (No Reserve)		2.1926975
	Battery Reserve (125%)		13.9144035
	Battery Size Provided		18 A-hr

PAD-4 Battery Calculations			
Qty	Module/Device	Standby Current (A)	Alarm Current (A)
1	Standard Operating Unit	0.06000	0.06000
	NAC #1	0.00000	1.08500
	NAC #2	0.00000	0.97800
	NAC #3	0.00000	0.79600
	NAC #4	0.00000	0.86600
	Total Current	0.06	3.785
	Standby Time (24 Hours)	1.44	
	Alarm Time (5 Minutes)		0.314155
	Batteries Required (No Reserve)		1.754155
	Battery Reserve (125%)		2.1926975
	Battery Size Provided		7 A-hr

OPERATIONS MATRIX								
	Activate the Alarm LED and Buzzer on the FACP & Remote Annunciator(s)	Activate the Supervisory LED and Buzzer on the FACP & Remote Annunciator(s)	Activate the Trouble LED and Buzzer on the FACP & Remote Annunciator(s)	Display Custom Message and Address on FACP & Remote Annunciator(s) Display	Activate Building Notification Devices	Transmit Alarm Signal to Central Station	Transmit Supervisory Signal to Central Station	Transmit Trouble Signal to Central Station
Smoke Detector (Ceiling)	XX			XX	XX	XX		
Smoke Detector (Sub Floor)	XX			XX	XX	XX		
Heat Detector	XX			XX	XX	XX		
Manual Pull Station	XX			XX	XX	XX		
Duct Smoke Detector	XX			XX	XX	XX		
Short Circuit			XX	XX				XX
Ground Fault			XX	XX				XX
Open Circuit			XX	XX				XX
Loss of Primary Power	XX	XX						XX
Loss of Secondary Power	XX	XX						XX



GENERAL NOTES	DATE	REVISIONS	REQUIRED APPROVALS	WCSH6 ONE CONGRESS SQUARE PORTLAND, ME CONTRACT WITH: Pacific & Southern LLC DBA WCSH6 EASTERN FIRE SERVICES, INC. AUBURN/LEWISTON INDUSTRIAL AIRPARK, AUBURN, MAINE 04210	FIRE ALARM SYSTEM
			OWNER STATE FIRE MARSHAL LOCAL FIRE DEPARTMENT		RISER & DETAILS
			DRAWN BY CRM		DWG. NO. FA-2
			CHECKED BY BWB CONTRACTOR LICENSE #		JOB NUMBER
					SCALE AS SHOWN
					DATE 7-1-15